

**Document Links:**  
[HBPC Instrument](#)

**REVSTAT**  
 REVIEW STATUS (not abstracted)  
 0. Abstraction has not begun  
 1. Abstraction in progress  
 2. Abstraction completed w/o errors  
 3. Cohort validation failure (exclusion)  
 4. Record contains missing data  
 5. Administrative Exclusion

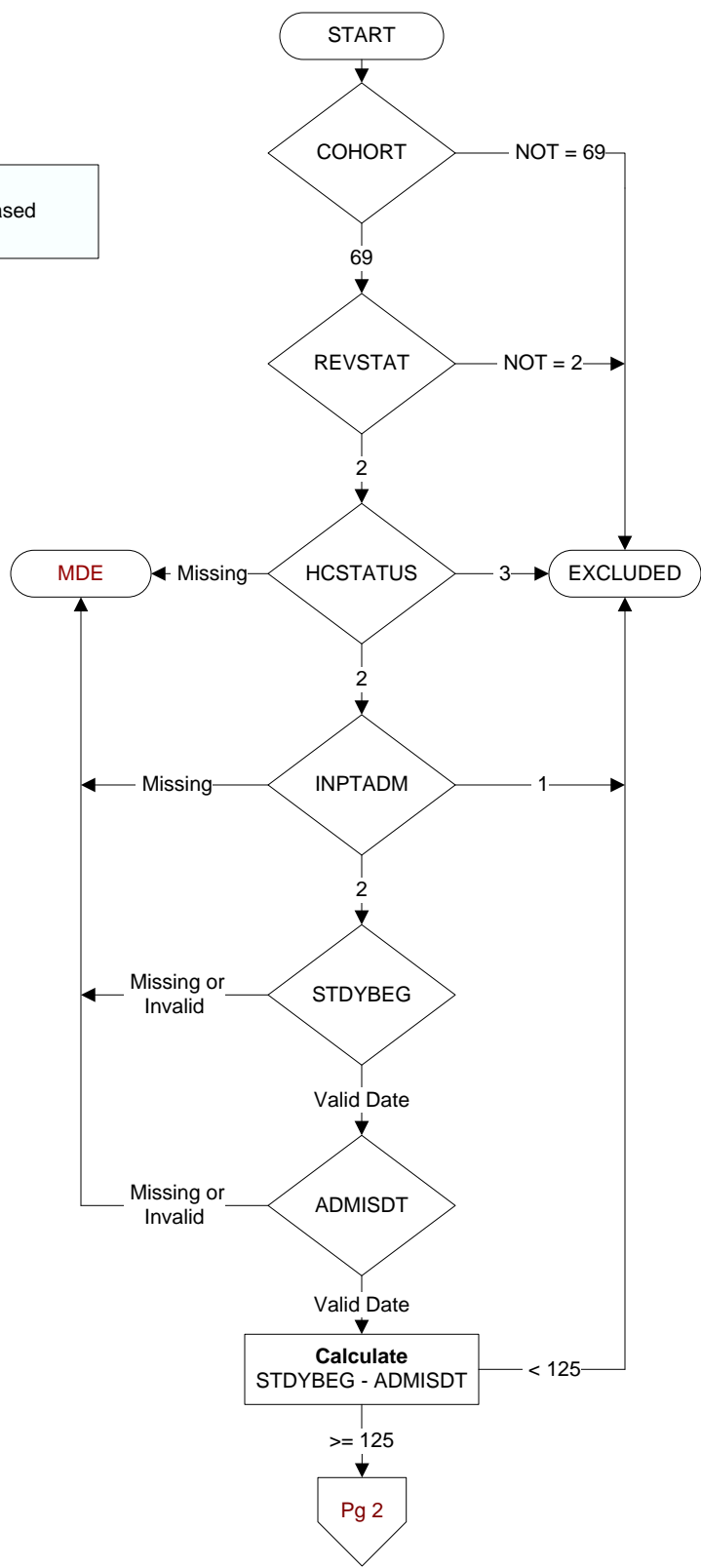
**COHORT**  
 69 – Home Based  
 Primary Care

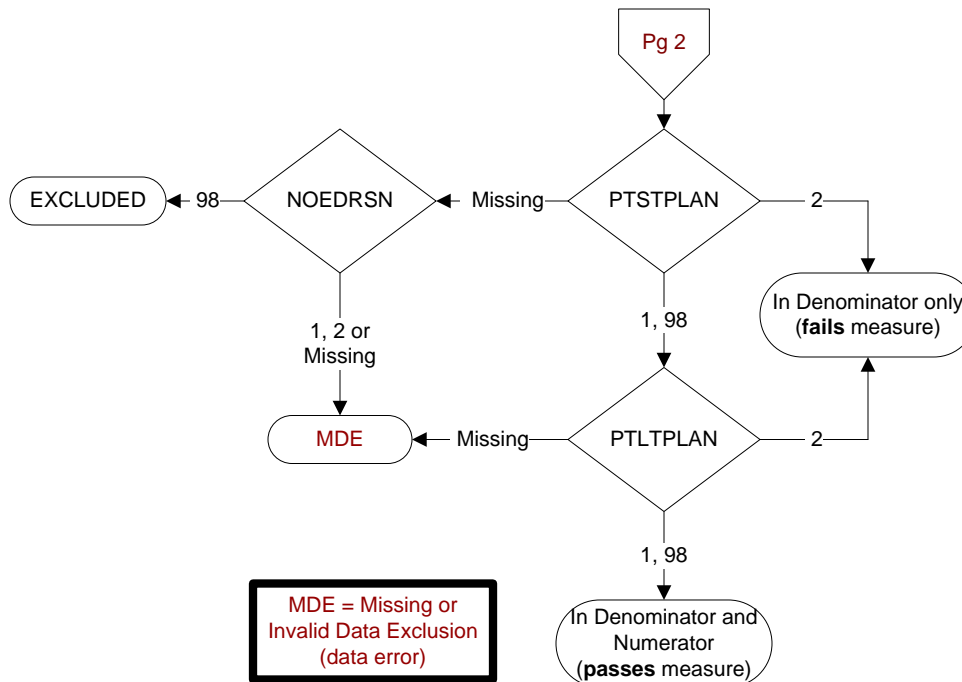
**HCSTATUS** (HBPC)  
 Counting from the most recent HBPC encounter within the study interval, enter the patient's status in regard to HBPC admission:  
 2. HBPC admission greater than or equal to 30 days but less than or equal to 1 year  
 3. HBPC admission greater than one year (>365 days from the admission date)

**INPTADM** (HBPC)  
 During the time frame from (computer display admisdt to admisdt + 30 days), did the record document the patient was hospitalized?  
 1. Yes  
 2. No

**STDYBEG**  
 Begin date of study interval. Received on pull list.

**ADMISDT** (HBPC)  
 Enter the HBPC admission date. **Admission date is date of the progress note documenting admission.**





**PTSTPLAN (HBPC)**  
 During the timeframe from (computer to display admisd - 30 days to admisd + 125 days), did the HBPC social worker document the plan for urgent/emergent care by either documenting the plan or documenting the patient/caregiver/guardian's choice to decline making a plan?  
 1. Yes, HBPC social worker documented the plan for urgent/emergent care  
 2. No, HBPC social worker did not document the plan for urgent/emergent care  
 98. Patient/caregiver/guardian refused/declined to make a plan for urgent/emergent care

**NOEDRSN (HBPC)**  
 During the timeframe from (computer to display admisd - 30 days to admisd + 30 days), is there documentation by a HBPC social worker of a reason why the education about alternative caregiving/placement plans did not take place?  
 1. Yes  
 2. No  
 98. Patient/caregiver/guardian refused

**PTLTPLAN (HBPC)**  
 During the timeframe from (computer to display admisd - 30 days to admisd + 125 days), did the HBPC social worker document the plan for long term care planning by either documenting the plan or documenting the patient/caregiver/guardian's choice to decline making a plan?  
 1. Yes, HBPC social worker documented the plan for long term care  
 2. No, HBPC social worker did not document the plan for long term care  
 98. Patient/caregiver/guardian refused/declined to make a plan for long term care