

Document Links:

[CGPI Validation Module](#)

[CGPI OP Med Recon Module](#)

COHORT

- 16. AMI - Outpatient visit
- 48. Female, age 20-69
- 50. Random Sample
- 51. Random Sample MH
- 54. Frail/Elderly
- 60. DM Outpatient
- 68. Contract CBOC

FEFLAG (rcvd on pull list)

- FE case flagged for CGPI review
- 0. No
- 1. Yes

REVSTAT

- REVIEW STATUS (not abstracted)
- 0. Abstraction has not begun
- 1. Abstraction in progress
- 2. Abstraction completed w/o errors
- 3. TVG failure (exclusion)
- 4. Record contains missing data
- 5. Administrative exclusion

OTHCARE (CGPI Validation)

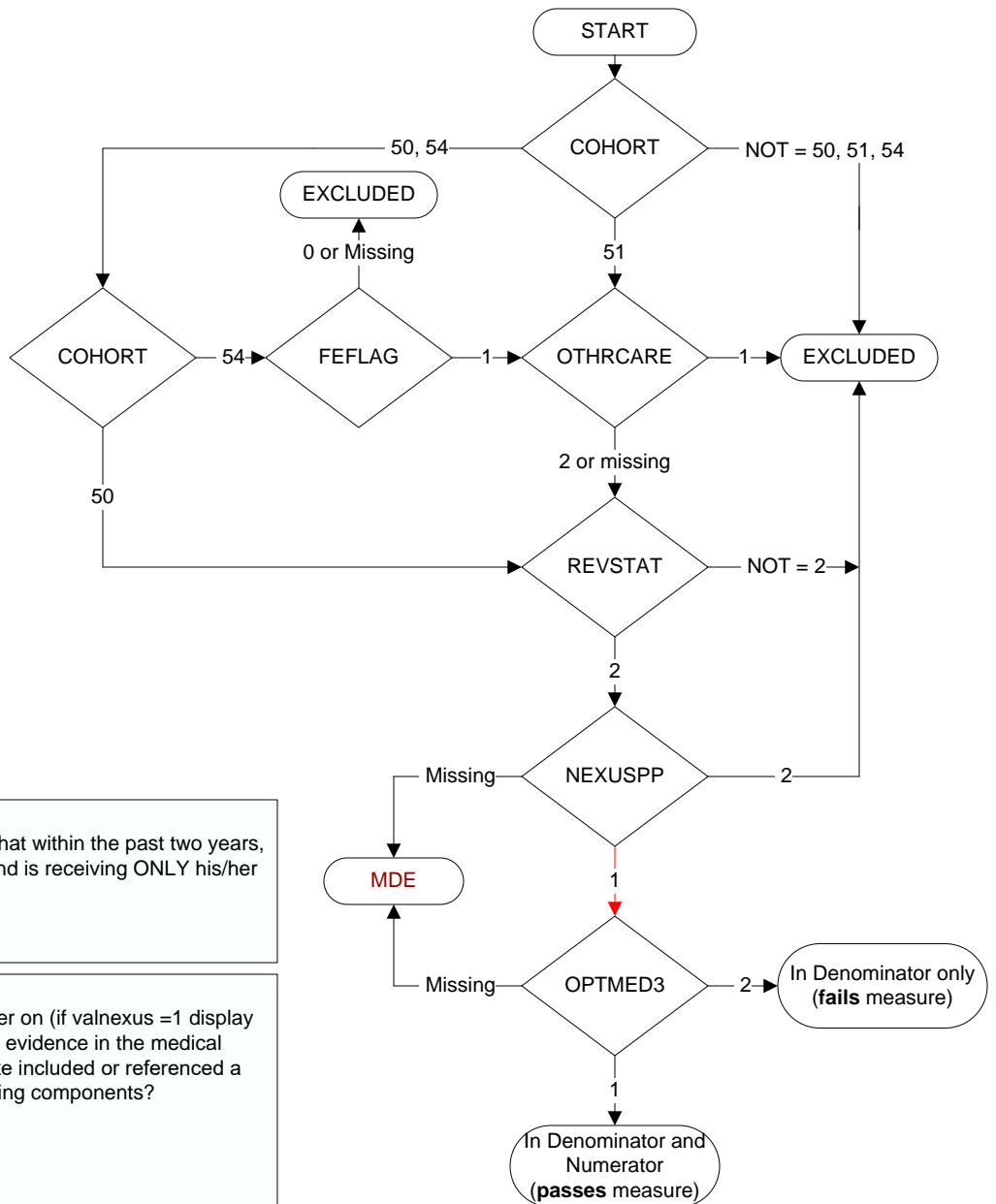
- Is there evidence in the medical record that within the past two years, the patient refused VHA Primary Care and is receiving ONLY his/her primary care in a non-VHA setting?
- 1. yes
- 2. no

OPTMED1-8 (OP MedRec)

During the most recent NEXUS encounter on (if valnexus =1 display pnexusdt; if 2 display nexusdt2), is there evidence in the medical record that the prescribing provider's note included or referenced a medication list including all of the following components?

Medication List Component

- OPTMED1.** Active VA Prescriptions
 - 1. Yes
 - 2. No
- OPTMED2.** Remote Active VA Prescriptions
 - 1. Yes
 - 2. No
- OPTMED3.** Non-VA Medications
 - 1. Yes
 - 2. No
- OPTMED4.** Expired VA Prescriptions (see D/D rules)
 - 1. Yes
 - 2. No
- OPTMED5.** Discontinued VA Prescriptions (see D/D rules)
 - 1. Yes
 - 2. No
- OPTMED6.** Pending Medication Orders (both Inpatient AND Outpatient)
 - 1. Yes
 - 2. No
- OPTMED8.** Allergies (both Remote Facility AND Local Facility)
 - 1. Yes
 - 2. No



MDE = Missing or Invalid Data Exclusion (data error)

NEXUSPP (OP MRec)
 Was the NEXUS clinic encounter on (if valnexus =1 then display pnexusdt, if 2 display nexusdt2) with a physician/APN/PA in a non-group setting?
 1. Yes
 2. No