

Document Links:
[HBPC Instrument](#)

REVSTAT
 REVIEW STATUS (not abstracted)
 0. Abstraction has not begun
 1. Abstraction in progress
 2. Abstraction completed w/o errors
 3. Cohort validation failure (exclusion)
 4. Record contains missing data
 5. Administrative Exclusion

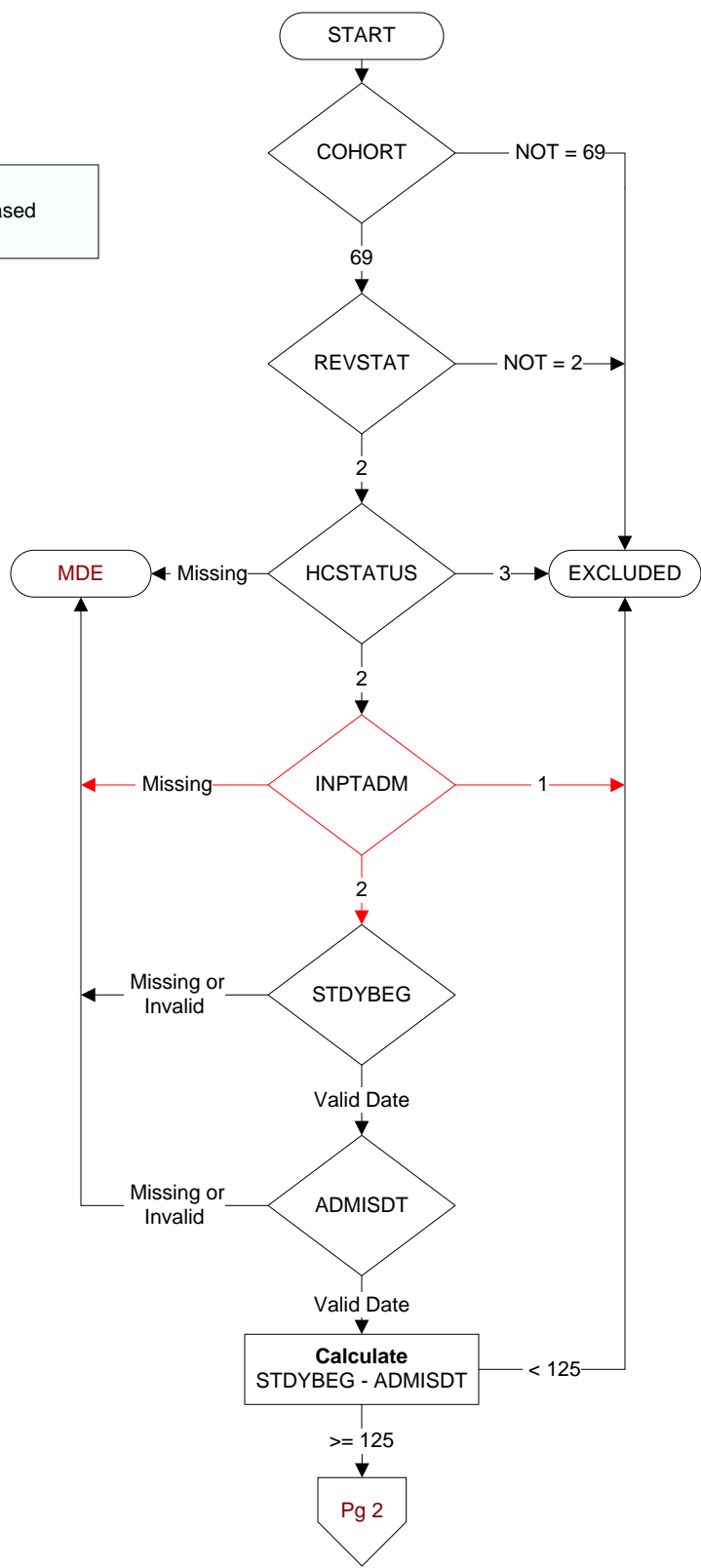
COHORT
 69 – Home Based
 Primary Care

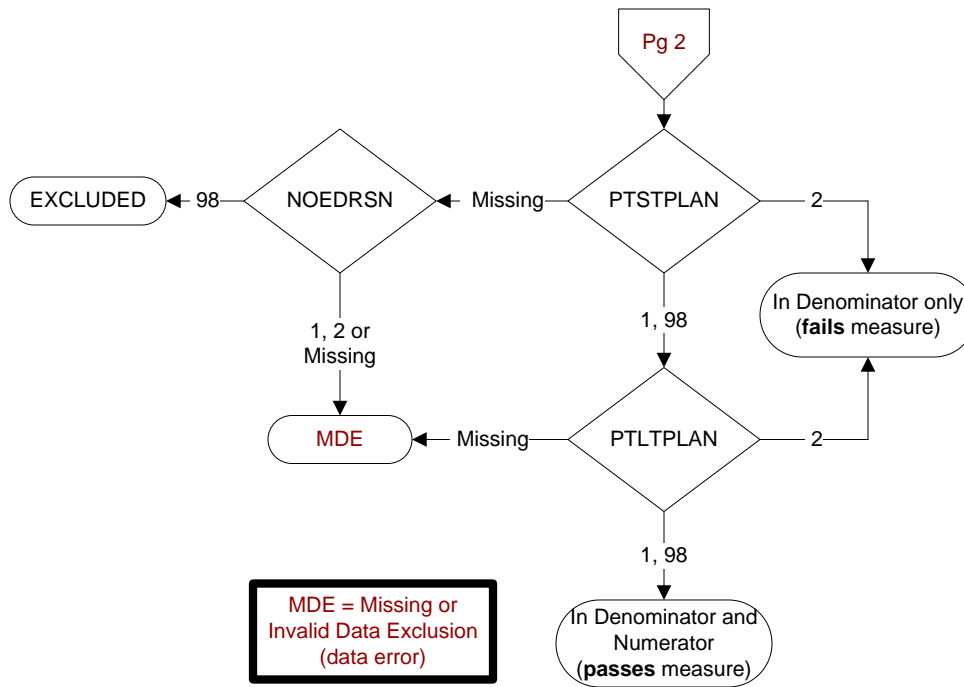
HCSTATUS (HBPC)
 Counting from the most recent HBPC encounter within the study interval, enter the patient's status in regard to HBPC admission:
 2. HBPC admission greater than or equal to 30 days but less than or equal to 1 year
 3. HBPC admission greater than one year (>365 days from the admission date)

INPTADM (HBPC)
 During the time frame from (computer display admisdt to admisdt + 30 days), did the record document the patient was hospitalized?
 1. Yes
 2. No

STDYBEG
 Begin date of study interval. Received on pull list.

ADMISDT (HBPC)
 Enter the HBPC admission date. **Admission date is date of the progress note documenting admission.**





PTSTPLAN (HBPC)
 During the timeframe from (computer to display admisd + 125 days), did the HBPC social worker document the plan for urgent/emergent care by either documenting the plan or documenting the patient/caregiver/guardian's choice to decline making a plan?
 1. Yes, HBPC social worker documented the plan for urgent/emergent care
 2. No, HBPC social worker did not document the plan for urgent/emergent care
 98. Patient/caregiver/guardian refused/declined to make a plan for urgent/emergent care

NOEDRSN (HBPC)
 During the timeframe from (computer to display admisd + 30 days), is there documentation by a HBPC social worker of a reason why the education about alternative caregiving/placement plans **did not** take place?
 1. Yes
 2. No
 98. Patient/caregiver/guardian refused

PTLTPLAN (HBPC)
 During the timeframe from (computer to display admisd + 125 days), did the HBPC social worker document the plan for long term care planning by either documenting the plan or documenting the patient/caregiver/guardian's choice to decline making a plan?
 1. Yes, HBPC social worker documented the plan for long term care
 2. No, HBPC social worker did not document the plan for long term care
 98. Patient/caregiver/guardian refused/declined to make a plan for long term care