

Document Links:
[Global Measures Instrument](#)

CATNUM (rcvd on pull list)
 Sample cohort
 70 = Global Measures

REVSTAT
 REVIEW STATUS (calculated)
 0. Abstraction has not begun
 1. Abstraction in progress
 2. Abstraction completed w/o errors
 3. TVG failure (exclusion)
 4. Record contains missing required answers (error record)
 5. Administrative Exclusion

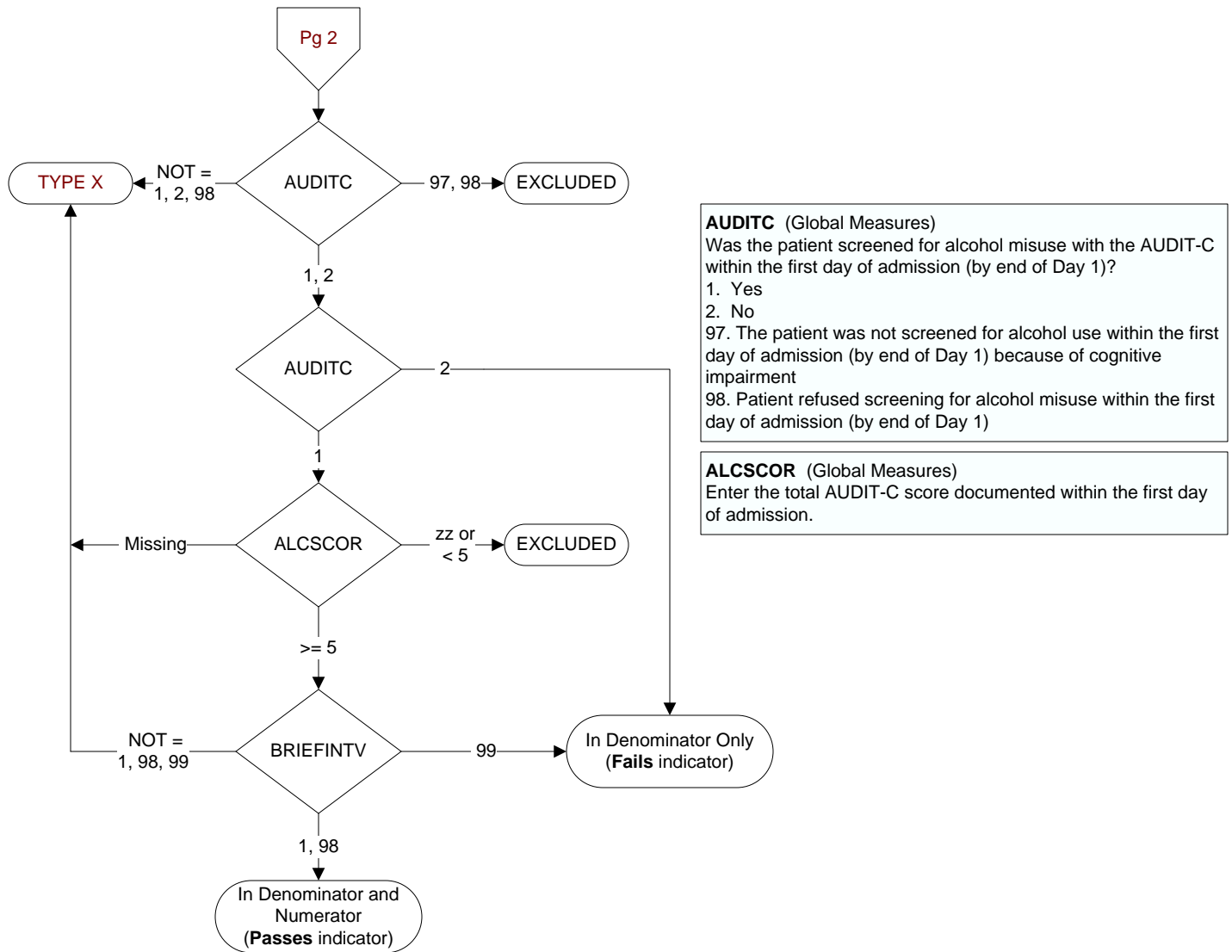
DCDT (Global Measures)
 Discharge date (rcvd on pull list and may not be modified)

ADMDT (Global Measures)
 Admission date:

BIRTHDT (Global Measures)
 Patient date of birth

AGE (Calculated)
 ADMDT - BIRTHDT

COMFORT (Global Measures)
 When is the earliest physician, APN, or PA documentation of comfort measures only?
 1. Day of arrival (day 0) or day after arrival (day 1)
 2. Two or more days after arrival (day 2 or greater)
 3. Comfort measures only documented during hospital stay, but timing unclear
 99. Comfort measures only was not documented by the physician/APN/PA or unable to determine



AUDITC (Global Measures)
 Was the patient screened for alcohol misuse with the AUDIT-C within the first day of admission (by end of Day 1)?
 1. Yes
 2. No
 97. The patient was not screened for alcohol use within the first day of admission (by end of Day 1) because of cognitive impairment
 98. Patient refused screening for alcohol misuse within the first day of admission (by end of Day 1)

ALCSCOR (Global Measures)
 Enter the total AUDIT-C score documented within the first day of admission.

BRIEFINTV (Global Measures)
 Following the positive screening result for alcohol use, did the patient receive a brief intervention prior to discharge?

1. The patient received a brief intervention including all of the following components
 - a. Concern that the patient is drinking at unhealthy levels known to increase his/her risk of alcohol-related health problems
 - b. Feedback linking alcohol use and health, including:
 - Personalized feedback (i.e., explaining how alcohol use can interact with patient's medical concerns [hypertension, depression/anxiety, insomnia, injury, congestive heart failure (CHF), diabetes mellitus (DM), breast cancer risk, interactions with medications])
 - OR**
 - General feedback on health risks associated with drinking.
 - c. Advice to abstain (if there are contraindications to drinking)
 - OR**
 - Advice to drink below recommended limits (specified for patient).
98. Patient refused/declined brief intervention
99. Brief intervention was not offered to the patient during the hospital stay or unable to determine if a brief intervention was provided from medical record documentation