

**CATNUM**

Sample category  
57. OEF/OIF scrnd TBI+

**REVSTAT**

REVIEW STATUS (not abstracted)

- 0. Abstraction has not begun
- 1. Abstraction in progress
- 2. Abstraction completed w/o errors
- 3. TVG failure (exclusion)
- 4. Record contains missing required answers (error record)
- 5. Administrative exclusion from all measures

**TBISCRDT (TBI)**

Enter the date of the most recent screening for Traumatic Brain Injury.

**ACTDXTBI (TBI)**

Prior to the most recent TBI screen, was there evidence in the record that the veteran had a pre-existing diagnosis of Traumatic Brain Injury prior to the TBI Screen?

- 1. Yes
- 2. No

**FOLOTBI (TBI)**

Following the positive TBI screen, was a consult placed for a Comprehensive TBI Evaluation appointment?

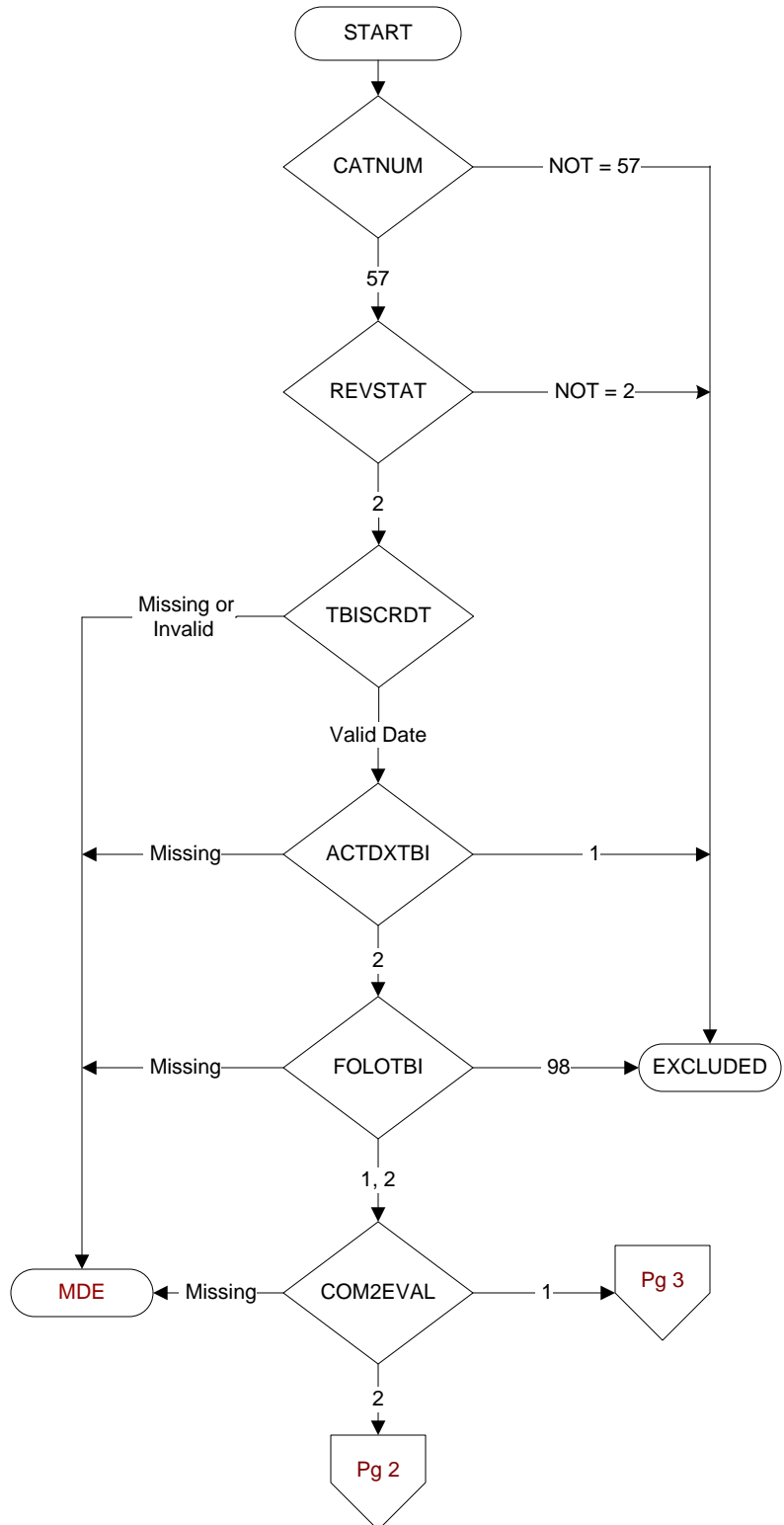
- 1. Yes
- 2. No
- 98. Patient refused consult

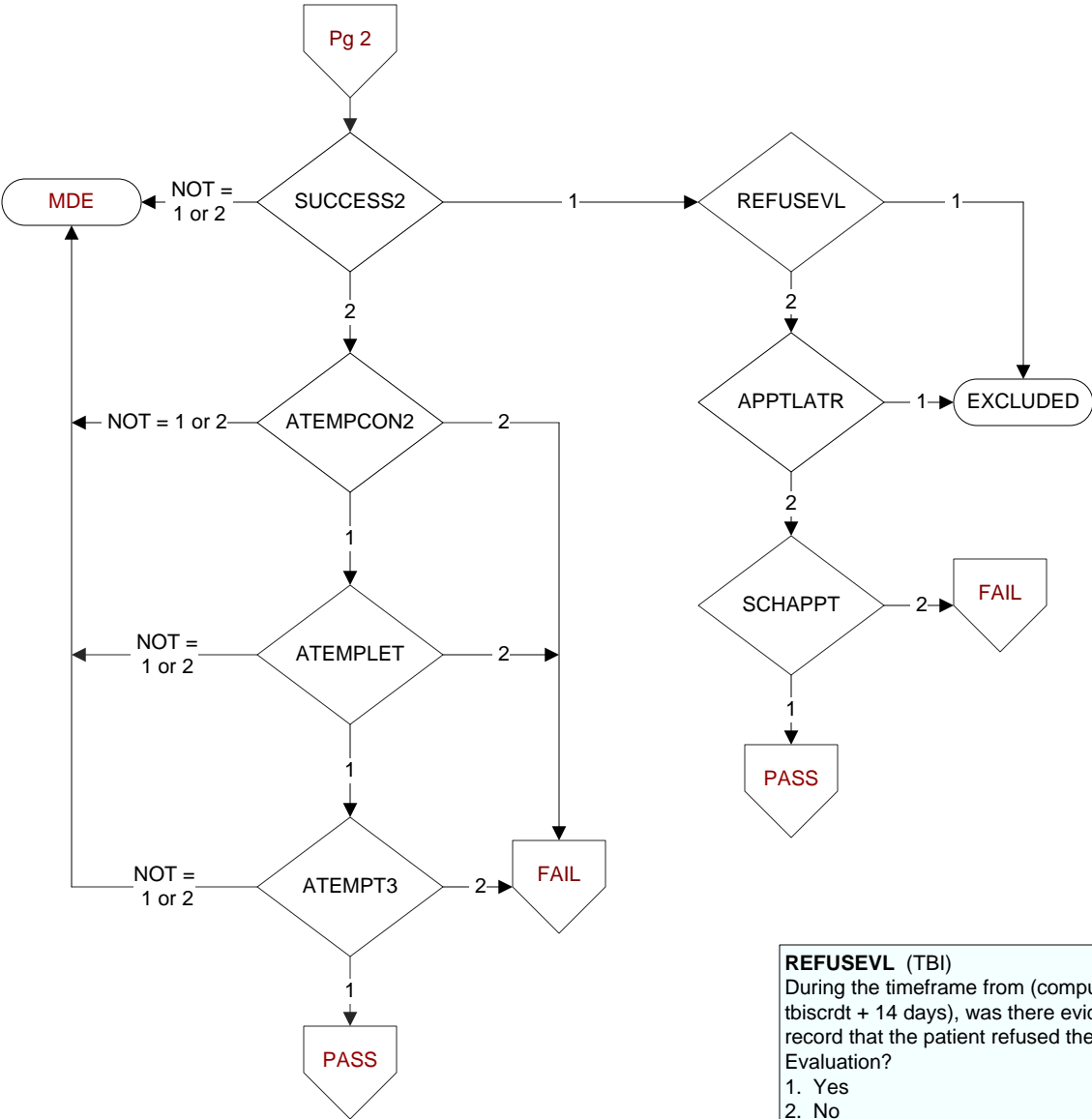
**COM2EVAL (TBI)**

During the timeframe following the positive TBI screen up to and including the pull list date, does the record document a Comprehensive TBI Evaluation was completed by a licensed independent medical provider?

- 1. Yes
- 2. No

**MDE = Missing or  
Invalid Data Exclusion  
(data error)**





**REFUSEVL (TBI)**  
During the timeframe from (computer to display tbscrdt to tbscrdt + 14 days), was there evidence in the medical record that the patient refused the Comprehensive TBI Evaluation?  
1. Yes  
2. No

**SUCCESS2 (TBI)**  
During the timeframe from (computer to display tbscrdt to tbscrdt +14 days), was the patient successfully notified of the Comprehensive TBI Evaluation appointment date?  
1. Yes  
2. No

**ATEMPCON2 (TBI)**  
During the timeframe from (computer to display tbscrdt to tbscrdt +14 days), does the record document the facility attempted to contact the patient regarding the Comprehensive TBI Evaluation appointment?  
1. Yes  
2. No

**ATEMPLET (TBI)**  
During the timeframe from (computer to display tbscrdt to tbscrdt +14 days), was one contact attempt made by certified letter?  
1. Yes  
2. No

**ATEMPT3 (TBI)**  
During the timeframe from (computer to display tbscrdt to tbscrdt +14 days), were at least three contact attempts made by telephone or secure messaging?  
1. Yes  
2. No

**APPTLATR (TBI)**  
During the timeframe from (computer to display tbscrdt to tbscrdt + 30 days), does the record document the patient requested an appointment greater than 30 days from the positive TBI screen date?  
1. Yes  
2. No

**SCHAPPT (TBI)**  
Was an appointment for the Comprehensive TBI Evaluation scheduled during the 30 days after the positive TBI screen?  
1. Yes  
2. No

(TBI) Is there documentation the Comprehensive TBI Evaluation included the following components?

**Components**  
**SEC1EVAL** Injury etiology (origin)  
**SEC2EVAL** Neurobehavioral Symptom Inventory (NSI)  
**SEC3EVAL** Targeted Physical Exam  
**SEC4EVAL** Treatment Plan

1. Yes  
2. No

**FOEVALDT** (TBI)  
Enter the date the Comprehensive TBI Evaluation was completed following the positive TBI screen.

**APPTLATR** (TBI)  
During the timeframe from (computer to display tbscrdt to tbscrdt + 30 days), does the record document the patient requested an appointment greater than 30 days from the positive TBI screen date?

1. Yes  
2. No

**SCHAPPT** (TBI)  
Was an appointment for the Comprehensive TBI Evaluation scheduled during the 30 days after the positive TBI screen?

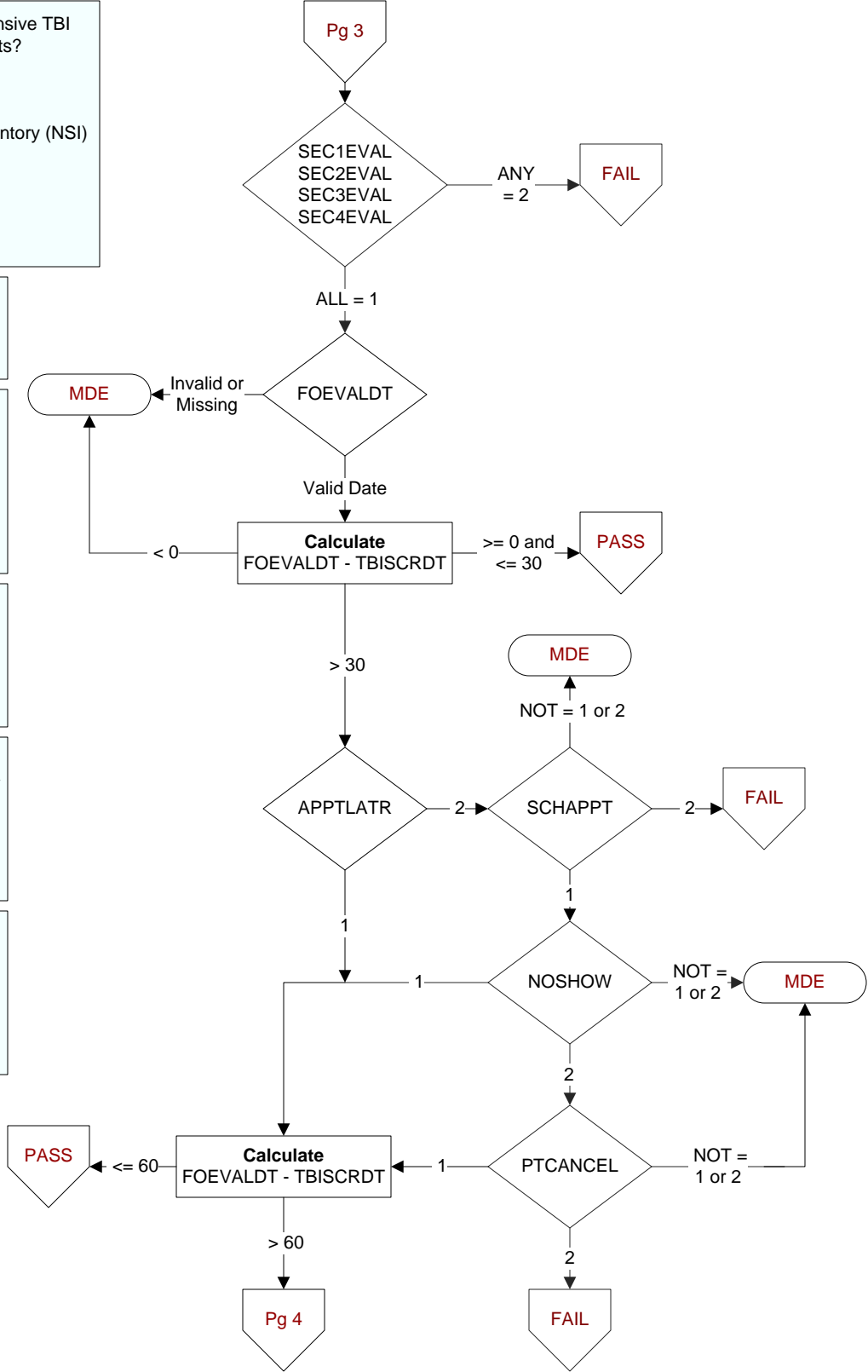
1. Yes  
2. No

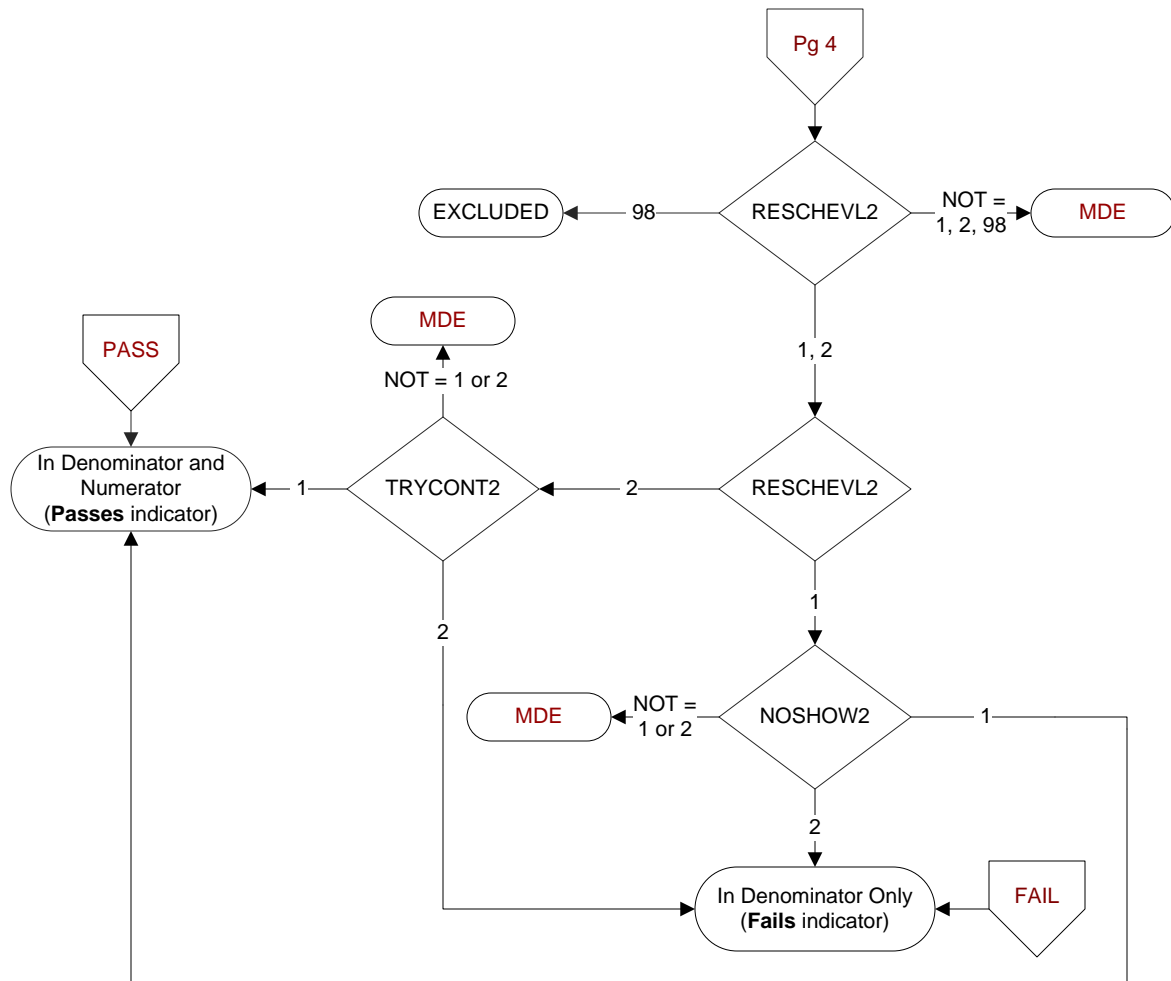
**NOSHOW** (TBI)  
Does the record document the patient was a no show for the Comprehensive TBI Evaluation appointment scheduled during the 30 days after the positive TBI screen?

1. Yes  
2. No

**PTCANCEL** (TBI)  
Does the record document the patient cancelled the Comprehensive TBI Evaluation appointment scheduled during the 30 days after the positive TBI screen?

1. Yes  
2. No



**RESCHEVL2 (TBI)**

On the date of or within 14 days after the patient was a no show or cancelled the initial Comprehensive TBI Evaluation appointment, does the record document that the facility successfully contacted the patient to reschedule the Comprehensive TBI Evaluation?

1. Yes
2. No
98. Patient refused to reschedule the CTBIE

**NOSHOW2 (TBI)**

Does the record document that patient did not show for or cancelled the rescheduled Comprehensive TBI Evaluation appointment?

1. Yes
2. No

**TRYCONT2 (TBI)**

On the date of or within the 14 days after the patient was a no show or cancelled the initial Comprehensive TBI Evaluation appointment, does the record document at least two attempts to contact the patient to reschedule the Comprehensive TBI Evaluation appointment?

1. Yes
2. No