

**REVSTAT**

REVIEW STATUS (not abstracted)

- 0. Abstraction has not begun
- 1. Abstraction in progress
- 2. Abstraction completed w/o errors
- 3. TVG failure (exclusion)
- 4. Record contains missing required answers (error record)
- 5. Administrative exclusion from all measures

**APROCODE** (Validation)

Enter the ICD-9-CM principal diagnosis code

**DCDATE** (Validation)

Enter the date of discharge. (received on pull list and may not be modified)

**ADMDT** (Validation)

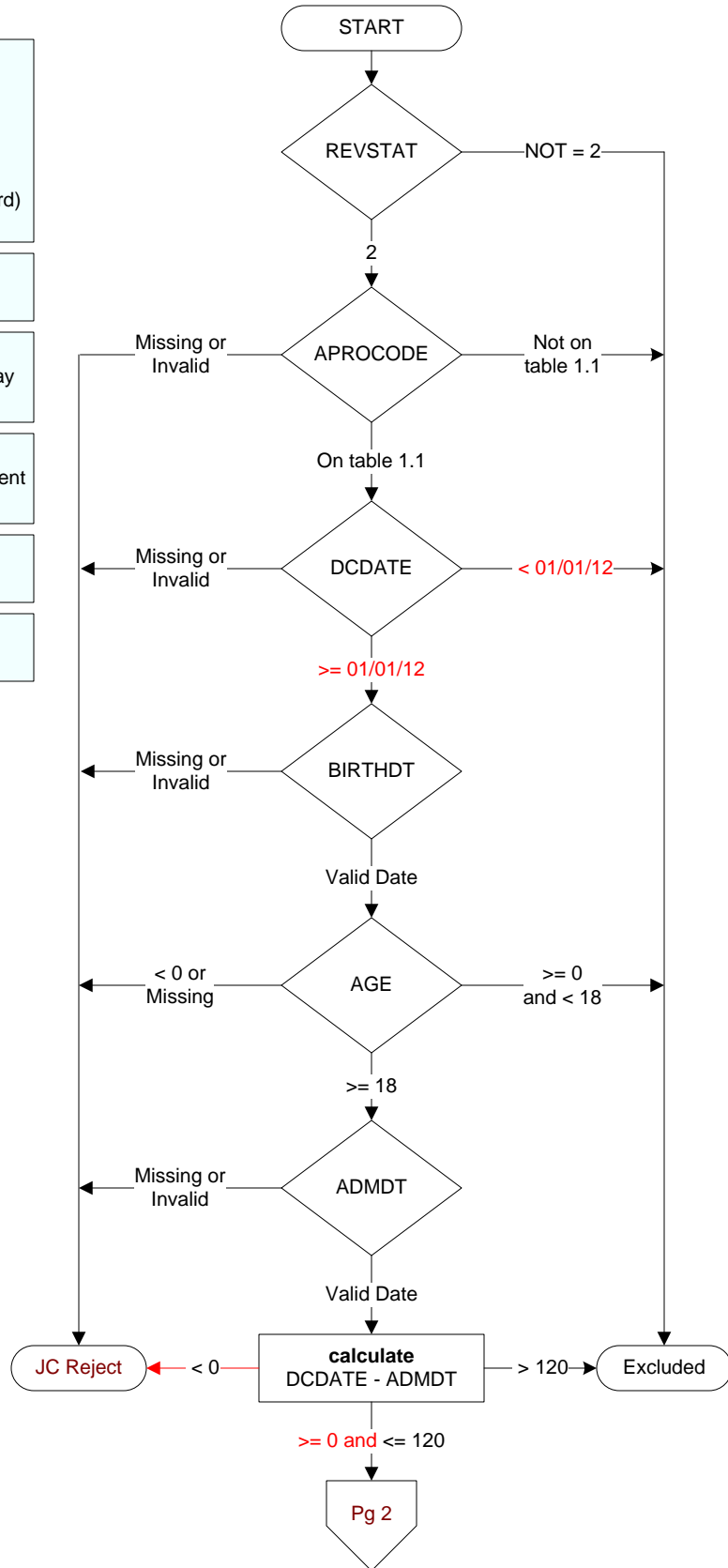
Enter the date the patient was formally admitted to inpatient status at this VAMC.

**BIRTHDT** (rcvd on pull list)

Patients date of birth.

**AGE**

calculated field: ADMDT - BIRTHDT



**COMFORT** (Validation)

When is the earliest physician, APN, or PA documentation of comfort measures only?

1. Day of arrival (day 0) or day after arrival (day 1)
2. Two or more days after arrival (day 2 or greater)
3. Comfort measures only documented during hospital stay, but timing unclear
99. Comfort measures only was not documented by the physician/APN/PA or unable to determine

**CLNTRIAL** (Validation)

During this hospital stay, was the patient enrolled in a clinical trial in which patients with acute myocardial infarction (AMI) were being studied? (Includes AMI, STEMI, NSTEMI, or heart attack)

- 1 = Yes
- 2 = No

**COMM1TX** (Validation)

Did the patient present initially to a community hospital where he/she received all or part of the first 24 hours of care for ACS?

1. yes
2. no

**COMMINT** (Validation)

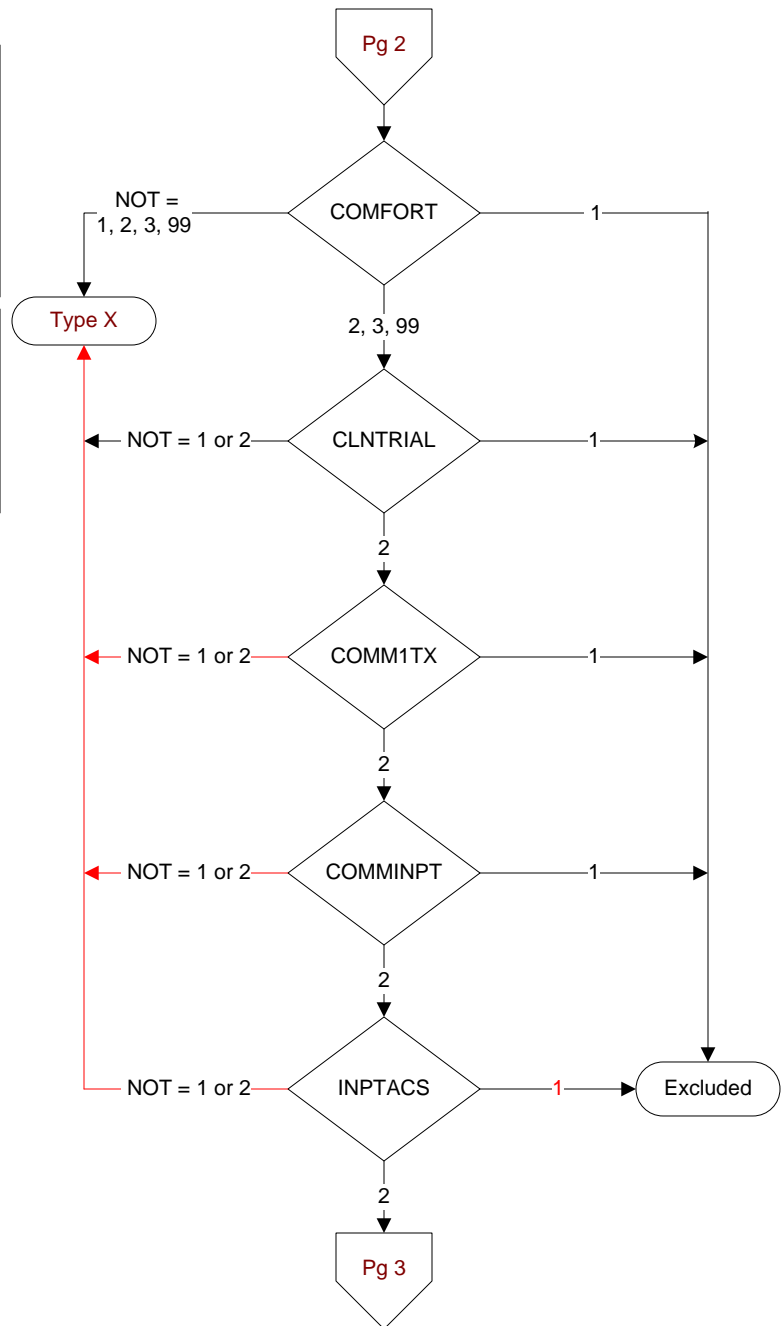
Was the patient a transfer from a community hospital where he/she was an inpatient for ACS care?

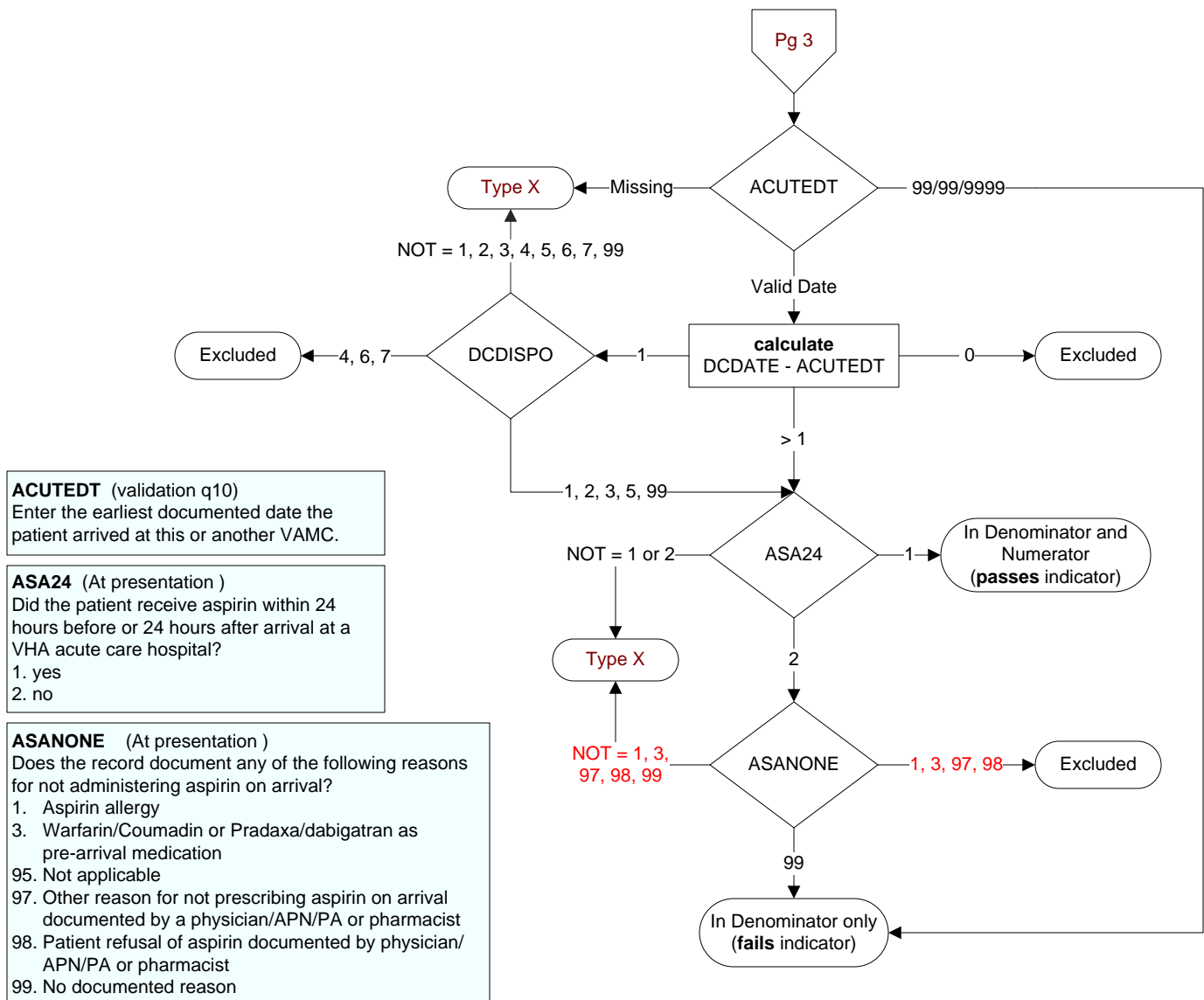
1. yes
2. no

**INPTACS** (Validation)

Was the veteran already a VAMC inpatient when ACS occurred?

1. yes
2. no
95. not applicable





1. Home  
-- Assisted Living Facilities  
-- Court/Law Enforcement – includes detention facilities, jails, and prison  
-- Board and care, domiciliary, foster or residential care, group or personal care homes, and homeless shelters  
-- Home with Home Health Services  
-- Outpatient Services including outpatient procedures at another hospital, outpatient Chemical Dependency Programs and Partial Hospitalization
2. Hospice – Home
3. Hospice – Health Care Facility  
-- General Inpatient and Respite, Residential and Skilled Facilities, and Other Health Care Facilities
4. Acute Care Facility  
-- Acute Short Term General and Critical Access Hospitals  
-- Cancer and Children's Hospitals  
-- Department of Defense and Veteran's Administration Hospitals
5. Other Health Care Facility  
-- Extended or Immediate Care Facility (ECF/ICF)  
-- Long Term Acute Care Hospital (LTACH)  
-- Nursing Home or Facility including Veteran's Administration Nursing Facility  
-- Psychiatric Hospital or Psychiatric Unit of a Hospital  
-- Rehabilitation Facility including Inpatient Rehabilitation Facility/Hospital or Rehabilitation Unit of a Hospital  
-- Skilled Nursing Facility (SNF), Sub-Acute Care or Swing Bed  
-- Transitional Care Unit (TCU)
6. Expired
7. Left Against Medical Advice/AMA
99. Not documented or unable to determine