

# Document Links:

[Sepsis Instrument](#)

## REVSTAT

REVIEW STATUS (not abstracted)  
0. Abstraction has not begun  
1. Abstraction in progress  
2. Abstraction completed w/o errors  
3. TVG failure (exclusion)  
4. Record contains missing data or errors  
5. Administrative exclusion from all measures

## AGE

Calculated field – ADMDT - BIRTHDT

## DCDT

Discharge date

## ADMDT

Admission date

## TRNSFR

Is there documentation the patient was received as a transfer from an inpatient, outpatient or emergency/observation department of an outside hospital or from an ambulatory surgery center?

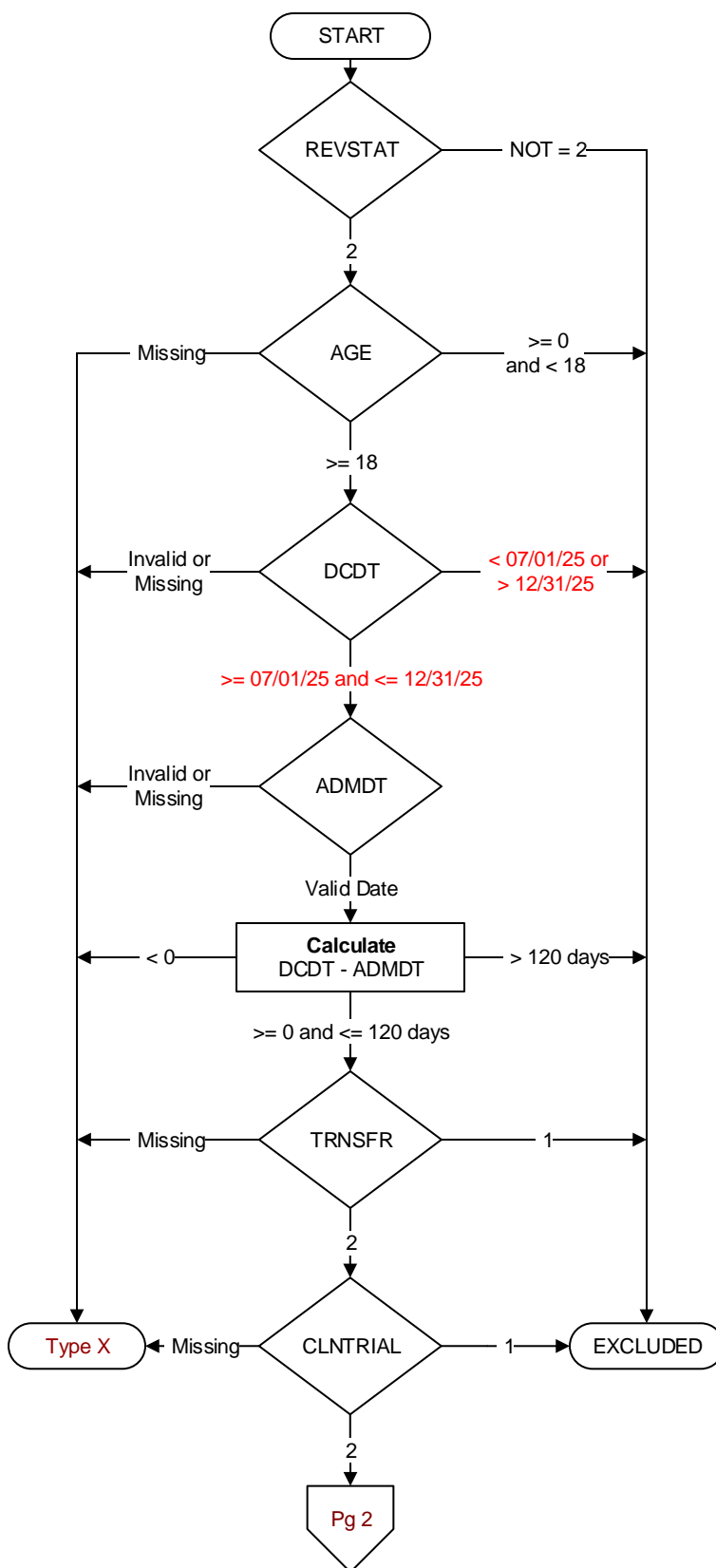
1. Yes
2. No

Select value "2" if transferred in from community living centers (CLC), long term care (LTC) facilities, nursing homes (NHCU), or skilled nursing facilities (SNF), even if the patient was there to receive short term rehab.

## CLNTRIAL

During this hospital stay, was the patient enrolled in a clinical trial in which patients with sepsis/septic shock were being studied?

1. Yes
2. No

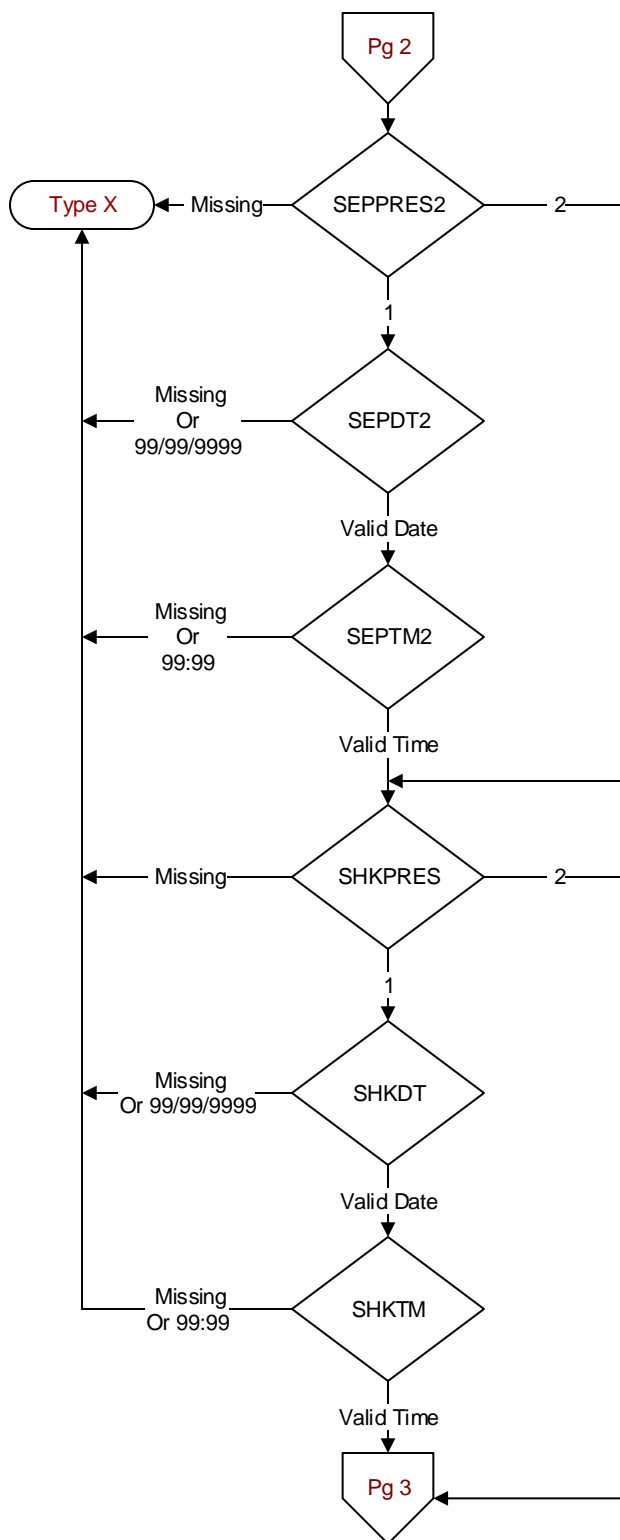


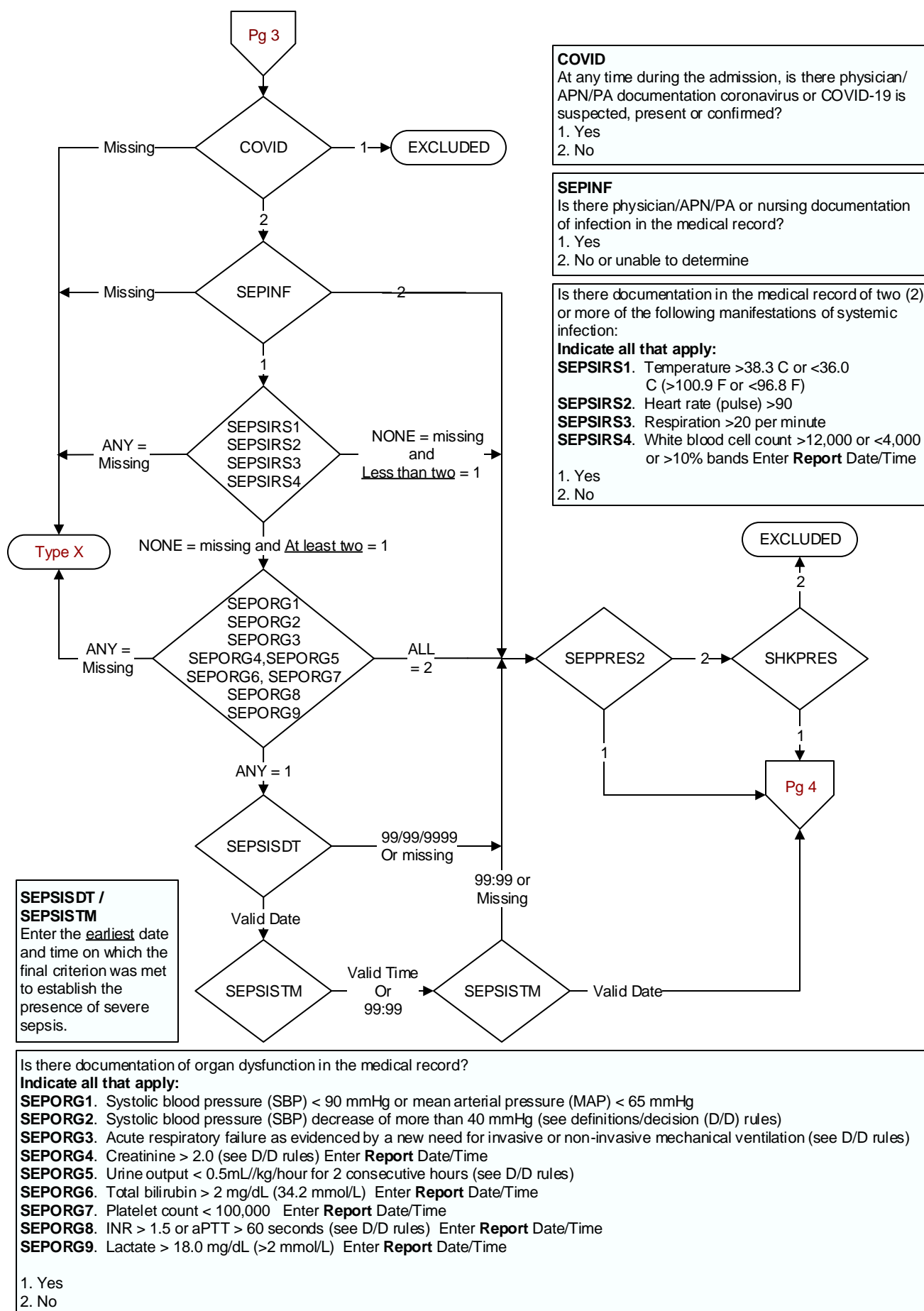
**SEPPRES2**  
Did a physician/APN/PA document presence of severe sepsis?  
1. Yes  
2. No

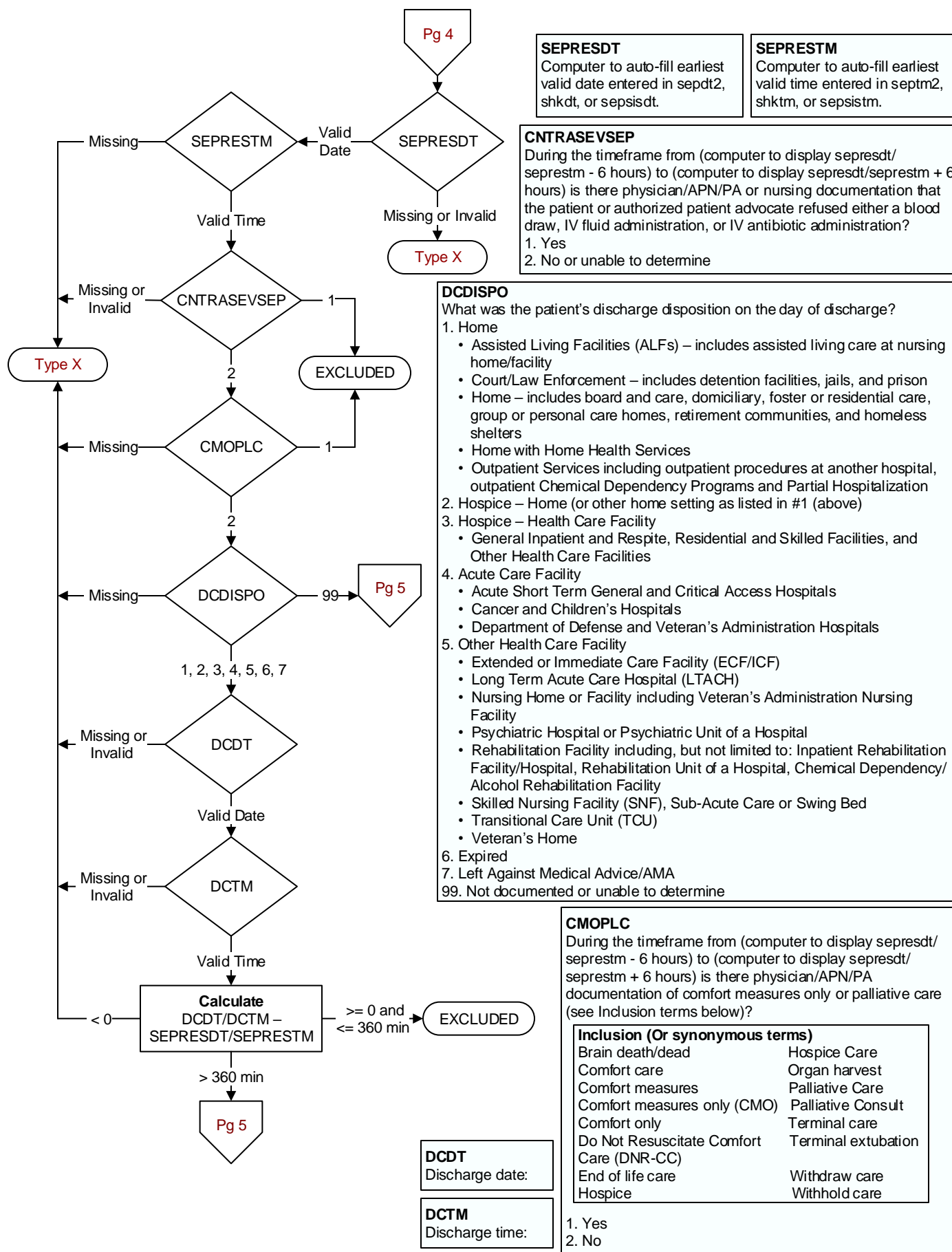
**SEPDT2 / SEPTM2**  
Enter the earliest date and time a physician/APN/PA documented the presence of severe sepsis

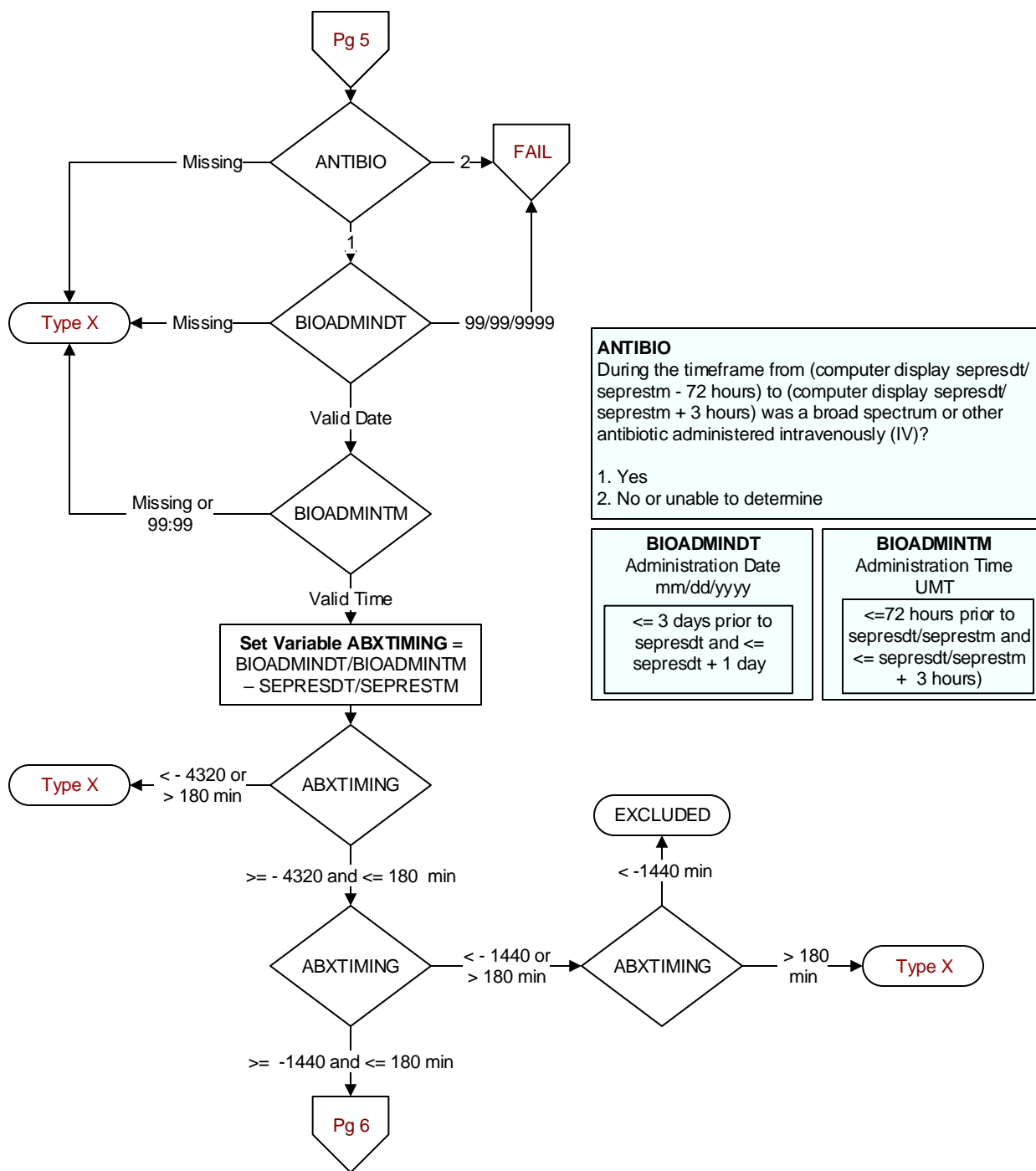
**SHKPRES**  
Is documentation of septic shock present in the record?  
1. Yes  
2. No, or unable to determine

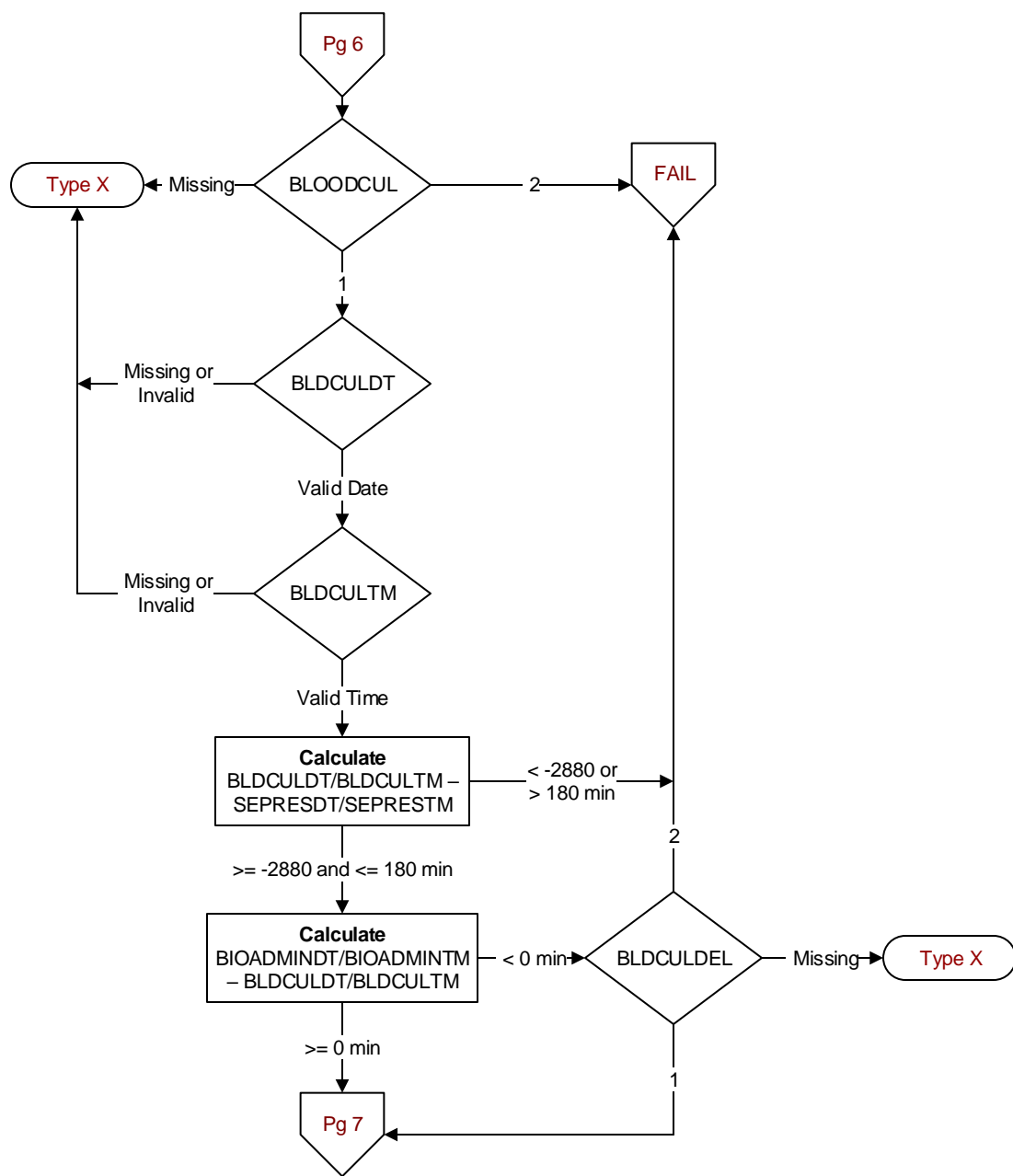
**SHKDT / SHKTM**  
Enter the earliest date and time a physician/APN/PA of the documented the presence of septic shock.











#### BLOODCUL

During the time frame from [(If bioadmintm/ bioadmintm - sepresdt/seprestm >= -1440 and < 0, computer to display sepresdt/ seprestm - 48 hours to sepresdt/seprestm + 3 hours); else computer to display (earliest bioadmintm/ bioadmintm- 24 hours to sepresdt/ seprestm + 3 hours)], was a blood culture collected?

1. Yes
2. No or unable to determine

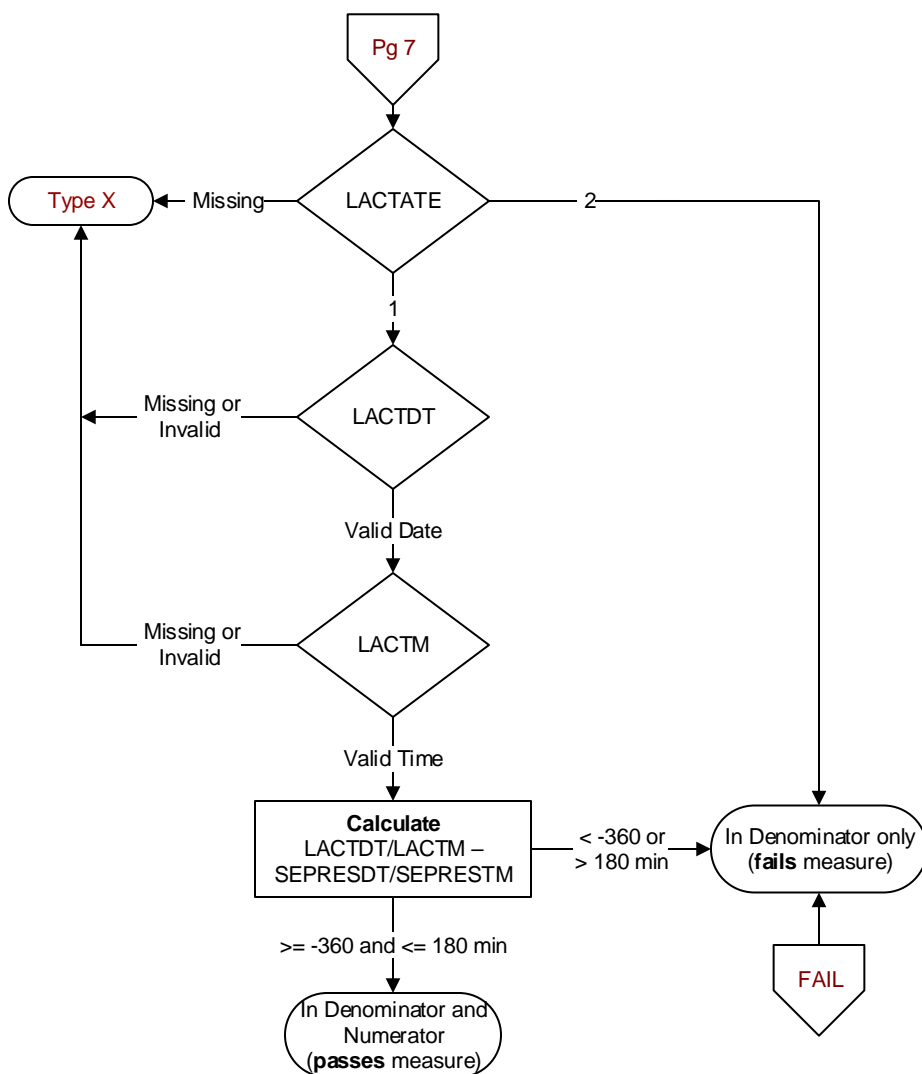
#### BLDCULDT / BLDCULTM

During the specified timeframe, enter the date and time the blood culture was collected.

#### BLDCULDEL

Is there documentation supporting an acceptable delay in collecting a blood culture?

1. Yes
2. No or unable to determine

**LACTATE**

During the timeframe from (computer display sepresdt/seprestm - 6 hours to sepresdt/seprestm + 3 hours) was an initial lactate level drawn (or collected)?

1. Yes
2. No

**LACTDT / LACTM**

Enter the date and time of the highest value during the timeframe from (computer display sepresdt/seprestm - 6 hours to sepresdt/seprestm), or if no lactate within that timeframe, enter the highest value from (computer display sepresdt/seprestm + 1 minute to sepresdt/seprestm + 3 hours) when the initial lactate level was drawn (or collected).

- If multiple lactate levels are drawn use the following steps:
  - Choose the highest lactate level drawn in the time frame from 6 hours prior to Severe Sepsis Presentation time through Severe Sepsis Presentation time.
  - If no lactate is drawn prior to Severe Sepsis Presentation time, use the highest lactate level drawn in the 3 hours following Severe Sepsis Presentation time.