

Document Links:

[CGPI Validation Module](#)

[CGPI PI Module](#)

COHORT
 16. AMI - Outpatient visit
 48. Female, age 20-69
 50. Random Sample
 51. Random Sample MH
 54. Frail/Elderly
 60. DM Outpatient

FEFLAG (rcvd on pull list)
 FE case flagged for CGPI review / scoring?
 0. No
 1. Yes

OTHCARE (Validation)
 Is there evidence in the medical record that within the past two years, the patient refused VHA Primary Care and is receiving ONLY his/her primary care in a non-VHA setting?
 1. yes
 2. no

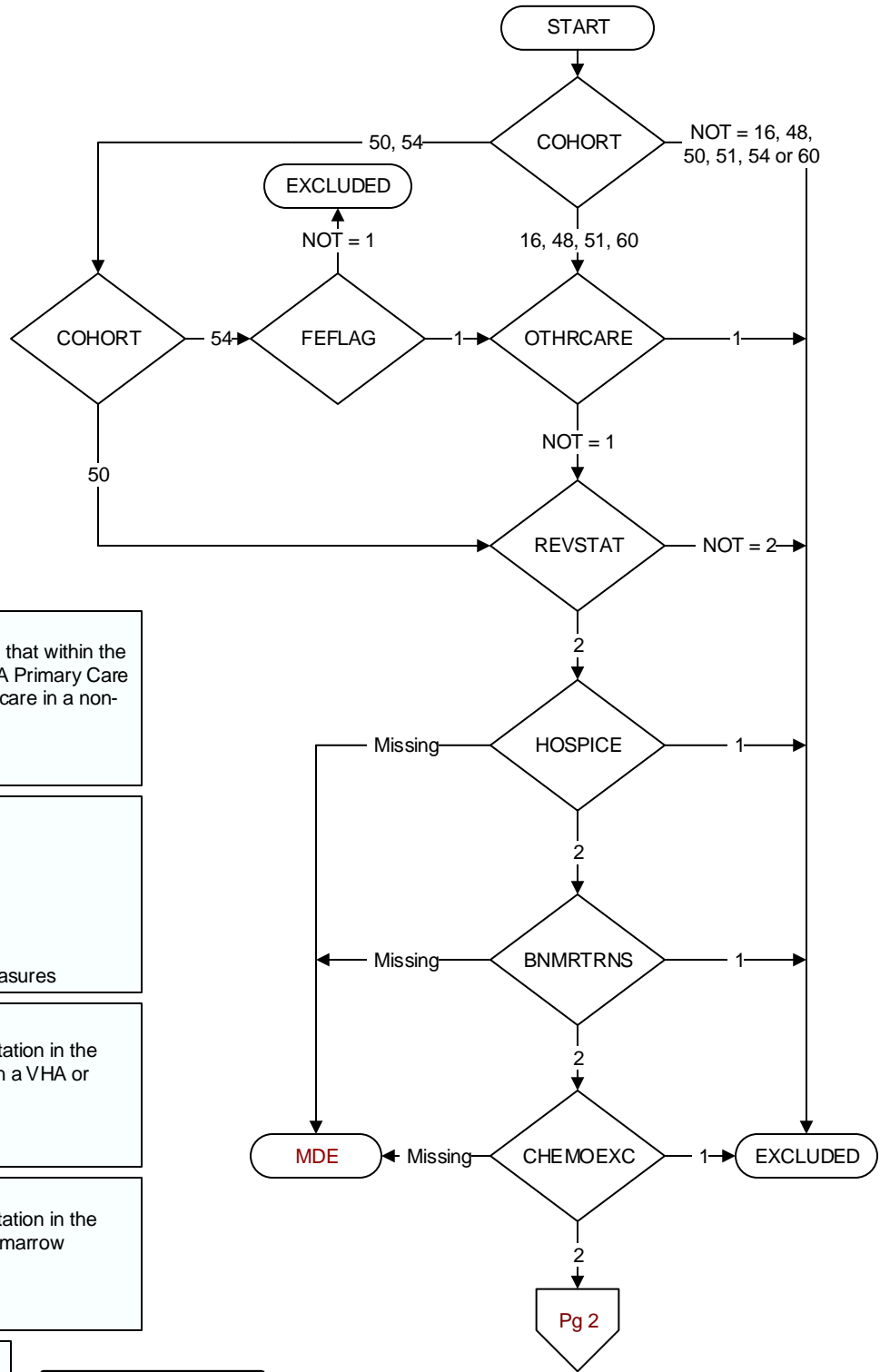
REVSTAT
 REVIEW STATUS (not abstracted)
 0. Abstraction has not begun
 1. Abstraction in progress
 2. Abstraction completed w/o errors
 3. TVG failure (exclusion)
 4. Record contains missing data
 5. Administrative exclusion from all measures

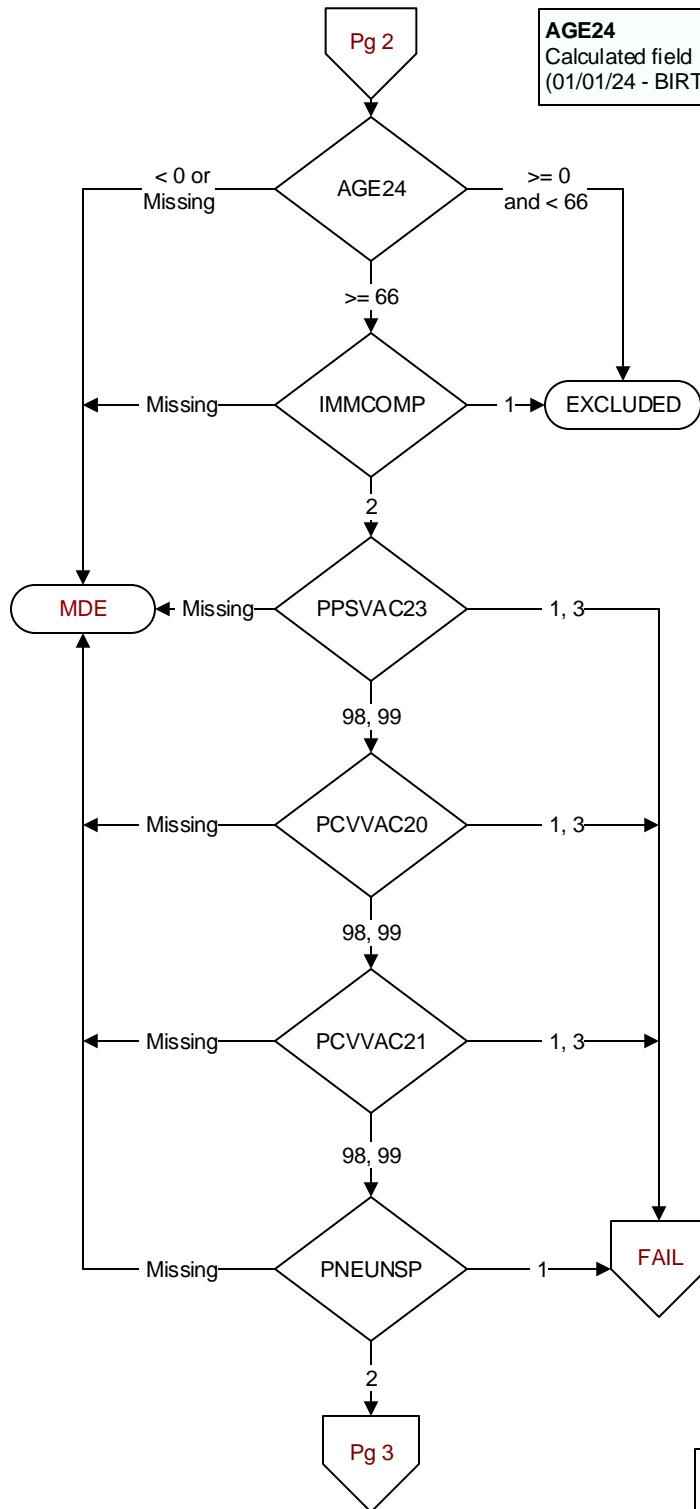
HOSPICE (Validation)
 During the past year is there documentation in the medical record the patient is enrolled in a VHA or community-based hospice program?
 1. Yes
 2. No

BNMRTRNS (PI)
 During the past year is there documentation in the medical record the patient had a bone marrow transplant?
 1. Yes
 2. No

CHEMOEXC (PI)
 Is there documentation in the medical record the patient received chemotherapy during the past year?
 1. Yes
 2. No

MDE = Missing or Invalid Data Exclusion (data error)





AGE24
Calculated field
(01/01/24 - BIRTHDT)

IMMCOMP (PI)
At any time in the patient's history through (computer to display stdyend) is there documentation of any of the following in the medical record?

- Immunocompromising conditions
- Anatomic or functional asplenia
- Sickle cell disease and HB-S disease
- Cerebrospinal fluid leak(s)
- Cochlear implant(s)

1. Yes
2. No

PPSVAC23 (PI)
At any time, not later than the study end date, did the veteran receive the **PPSV23 (Pneumovax 23®, Pnu-Imune 23®)** or pneumococcal (Pneumovax) vaccination, either as an inpatient or outpatient?

1. received **PPSV23 (Pneumovax 23®, Pnu-Imune 23®)** or pneumococcal (Pneumovax) vaccination from VHA
3. received **PPSV23 (Pneumovax 23®, Pnu-Imune 23®)** or pneumococcal (Pneumovax) vaccination from private sector provider
98. patient refused **PPSV23 (Pneumovax 23®, Pnu-Imune 23®)** or pneumococcal (Pneumovax) vaccination
99. no documentation patient received **PPSV23 (Pneumovax 23®, Pnu-Imune 23®)** or pneumococcal (Pneumovax) vaccination

PCVVAC20 (PI)
On or after 6/08/2021 and not later than the study end date, did the veteran receive the **pneumococcal conjugate 20 (PCV20 or PREVNAR 20™)** vaccination, either as an inpatient or outpatient?

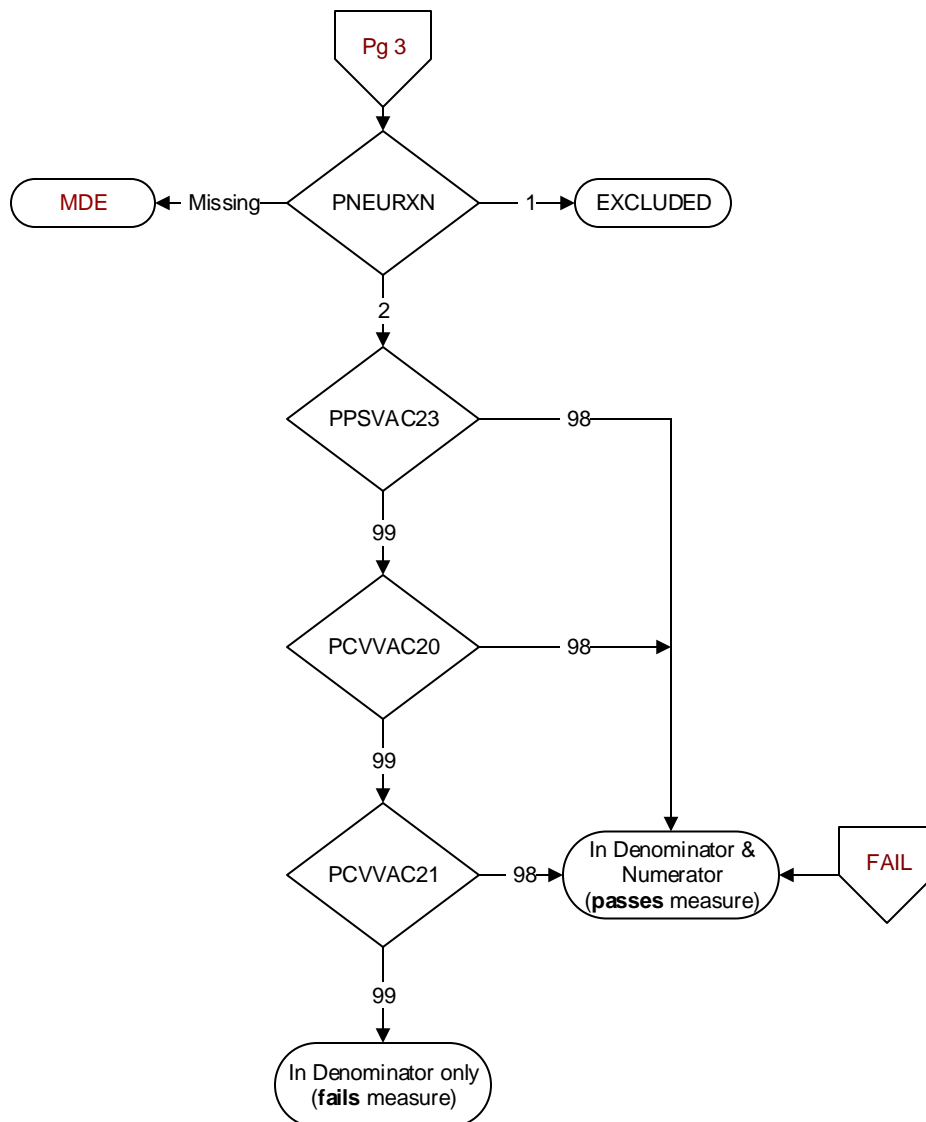
1. received PCV20 or PREVNAR 20™ vaccination from VHA
3. received PCV20 or PREVNAR 20™ vaccination from private sector provider
98. patient refused PCV20 or PREVNAR 20™ vaccination
99. no documentation patient received PCV20 or PREVNAR 20™ vaccination

PCVVAC21 (PI)
On or after 06/17/2024 and not later than the study end date, did the veteran receive the **pneumococcal conjugate 21 (PCV21 or CAPVAXIVE™)** vaccination, either as an inpatient or outpatient?

1. received PCV21 or CAPVAXIVE™ vaccination from VHA
3. received PCV21 or CAPVAXIVE™ vaccination from private sector provider
98. patient refused PCV21 or CAPVAXIVE™ vaccination
99. no documentation patient received PCV21 or CAPVAXIVE™ vaccination

PNEUNSP (PI)
Prior to 10/01/2012, is there documentation in the medical record of an unspecified pneumococcal vaccination?

1. Yes
2. No



PNEURXN (PI)
 Is there documentation in the medical record of a prior anaphylactic reaction to a pneumococcal vaccine?
 1. Yes
 2. No