

Document Links:[CGPI Validation Module](#)[CGPI OP Med Recon Module](#)**COHORT**

16. AMI - Outpatient visit
 48. Female, age 20-69
 50. Random Sample
 51. Random Sample MH
 54. Frail/Elderly
 60. DM Outpatient

FEFLAG

(rcvd on pull list)
 FE case flagged for CGPI review / scoring?
 0. No
 1. Yes

REVSTAT

REVIEW STATUS (not abstracted)
 0. Abstraction has not begun
 1. Abstraction in progress
 2. Abstraction completed w/o errors
 3. TVG failure (exclusion)
 4. Record contains missing data
 5. Administrative exclusion

OTHCARE (CGPI Validation)

Is there evidence in the medical record that within the past two years, the patient refused VHA Primary Care and is receiving ONLY his/her primary care in a non-VHA setting?
 1. yes
 2. no

OPTMED1-8 (OP MedRec)

During the most recent NEXUS encounter on (if valnexus = 1 display pnexusdt; if 2 display nexust2), is there evidence in the medical record of a medication list documented as reviewed in the encounter note that included all of the following components?

Medication List Component**OPTMED1.** Active VA Prescriptions

1. Yes
2. No

OPTMED2. Remote Active VA Prescriptions

1. Yes
2. No

OPTMED3. Non-VA Medications

1. Yes
2. No

OPTMED4. Expired VA Prescriptions (see D/D rules)

1. Yes
2. No

OPTMED5. Discontinued VA Prescriptions (see D/D rules)

1. Yes
2. No

OPTMED6. Any Pending Medication Orders

1. Yes
2. No

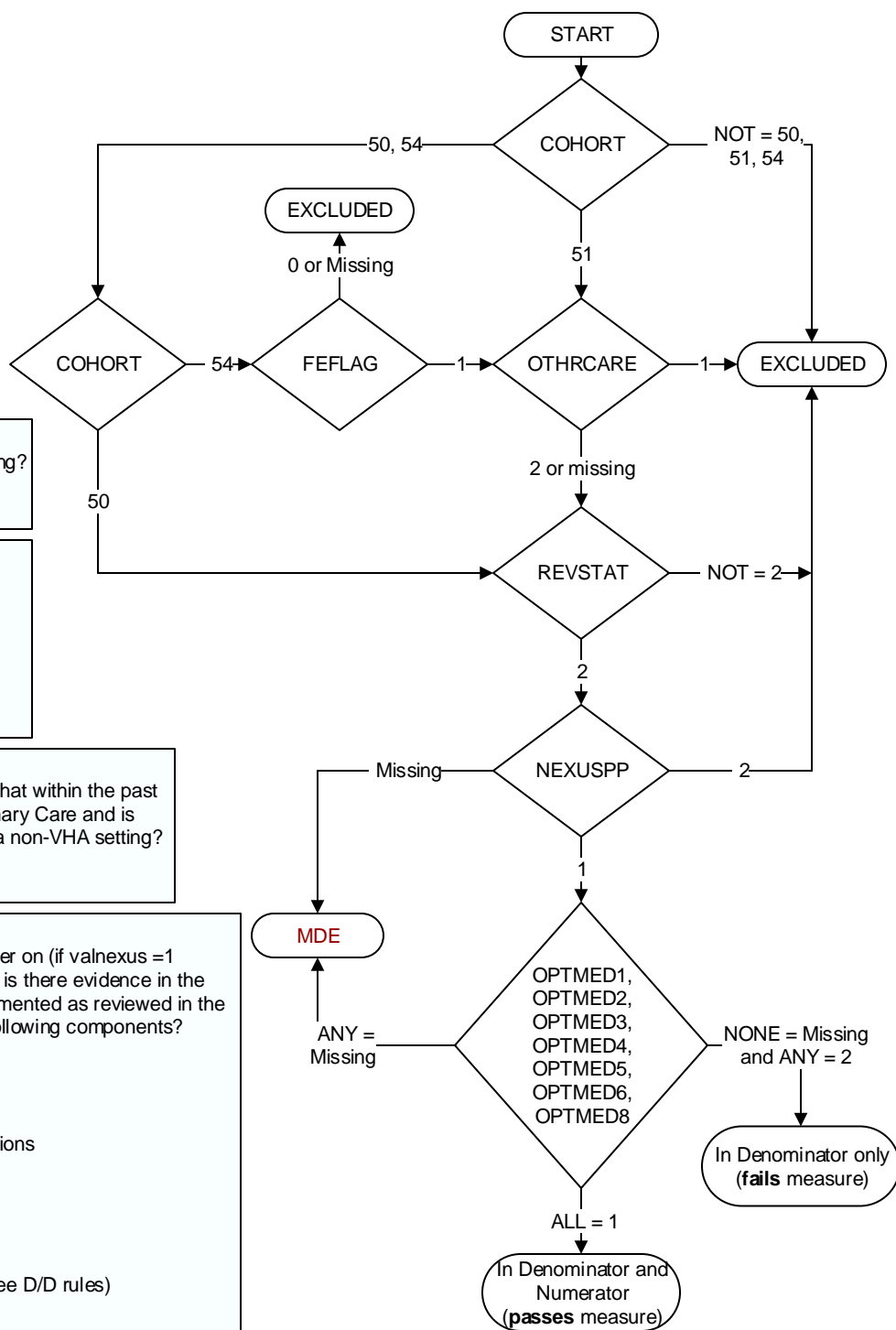
OPTMED8. Allergies (both Remote Facility AND Local Facility)

1. Yes
2. No

NEXUSPP (OP MRec)

Was the NEXUS clinic encounter on (if valnexus = 1 then display pnexusdt, if 2 display nexust2) with a physician/APN/PA in a non-group setting?

1. Yes
2. No



**MDE = Missing or
 Invalid Data Exclusion
 (data error)**