

**Document Links:**[CGPI Validation Module](#)[CGPI Core Module](#)[CGPI Shared Module](#)**COHORT**

16. AMI - Outpatient visit  
 48. Female, age 20-69  
 50. Random Sample  
 51. Random Sample MH  
 54. Frail/Elderly  
 60. DM Outpatient

**FEFLAG** (rcvd on pull list)  
 FE case flagged for CGPI  
 review / scoring?  
 0. No  
 1. Yes

**OTHCARE** (Validation)

Is there evidence in the medical record that  
 within the past two years, the patient refused  
 VHA Primary Care and is receiving ONLY his/  
 her primary care in a non-VHA setting?  
 1. yes  
 2. no

**REVSTAT**

REVIEW STATUS (not abstracted)  
 0. Abstraction has not begun  
 1. Abstraction in progress  
 2. Abstraction completed w/o errors  
 3. TVG failure (exclusion)  
 4. Record contains missing data  
 5. Administrative exclusion from all measures

**HOSPICE** (Validation)

During the past year is there documentation in  
 the medical record the patient is enrolled in a  
 VHA or community-based hospice program?  
 1. Yes  
 2. No

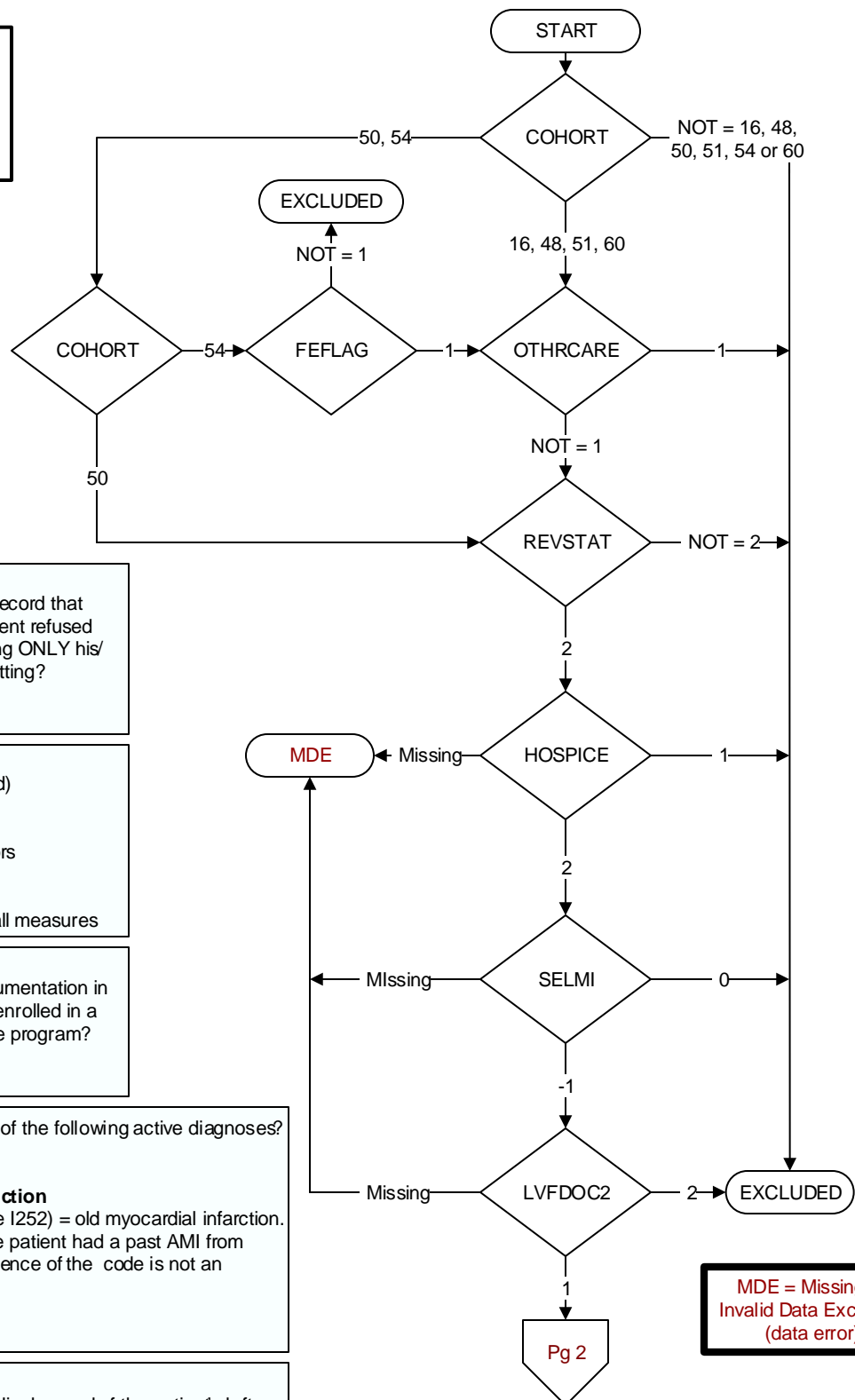
Did the patient have one or more of the following active diagnoses?  
 (Validation)

**SELM1 4 = Old Myocardial Infarction**

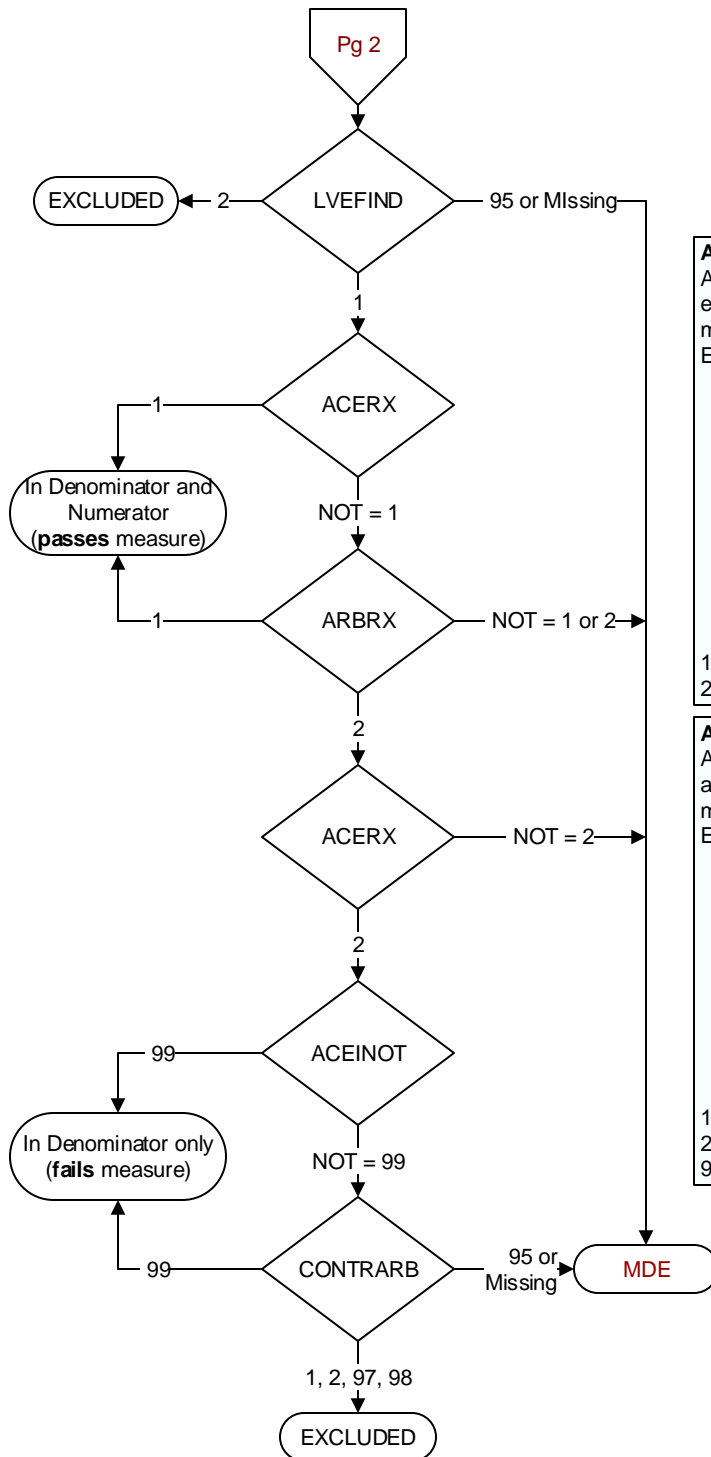
ICD-9-CM code 412 (ICD-10 code I252) = old myocardial infarction.  
 The abstractor may determine the patient had a past AMI from  
 clinician documentation, and presence of the code is not an  
 absolute requirement  
 -1 Yes  
 0 No

**LVFDOC2** (CVD)

Is there documentation in the medical record of the patient's left  
 ventricular systolic function (LVSF) /ejection fraction (EF)?  
 1. Yes  
 2. No



**MDE = Missing or  
 Invalid Data Exclusion  
 (data error)**



#### LVEFIND (CVD)

Is the most recent left ventricular systolic function documented either as an ejection fraction (EF) less than 40% or narrative description consistent with moderate or severe systolic dysfunction (LVSD)?

1. yes
2. no
95. not applicable

#### ACEINOT (Shared)

At the most recent outpatient visit, was an angiotensin converting enzyme inhibitor (ACEI) included in the patient's current medications?

Examples of ACEI medications include, but are not limited to:

- Benazepril hydrochloride
- Enalapril maleate
- Captopril
- Fosinopril sodium
- Lisinopril
- Moexipril hydrochloride
- Perindopril erbumine
- Quinapril
- Ramipril
- Trandolapril
- Combinations of ACEI with hydrochlorothiazide

1. Yes
2. No

#### ARBRX (Shared)

At the most recent outpatient visit, was an angiotensin II receptor antagonist (ARB or AIIRA or ARNI) included in the patient's current medications?

Examples of ARB medications include, but are not limited to:

- Azilsartan medoxomil
- Candesartan cilexetil
- Eprosartan
- Irbesartan
- Losartan potassium
- Olmesartan medoxomil
- Telmisartan
- Valsartan
- Sacubitril/Valsartan
- Combinations of ARB with hydrochlorothiazide

1. Yes
2. No
95. Not applicable

#### ACEINOT (Shared)

Does the record document any of the following reasons for not prescribing an ACEI?

1. ACEI allergy
5. Moderate or severe aortic stenosis
95. Not applicable
97. Other reasons documented by a physician/APN/PA or pharmacist for not prescribing an ACEI
98. Patient refusal of ACEI medications documented by physician/APN/PA or pharmacist
99. No documented reason

#### CONTRARB (Shared)

Does the record document any of the following reasons for not prescribing an ARB?

1. ARB (AIIRA) allergy or sensitivity
2. Moderate or severe aortic stenosis
95. Not applicable
97. Other reasons documented by a physician, APN, PA, or pharmacist for not prescribing an ARB
98. Patient refusal of ARBs documented by physician/APN/PA or pharmacist
99. No documented reason