

**Document Links:**

- [CGPI Validation Module](#)
- [CGPI PI Module](#)

**COHORT**  
 16. AMI - Outpatient visit  
 48. Female, age 20-69  
 50. Random Sample  
 51. Random Sample MH  
 54. Frail/Elderly  
 60. DM Outpatient

**FEFLAG** (rcvd on pull list)  
 FE case flagged for CGPI review / scoring?  
 0. No  
 1. Yes

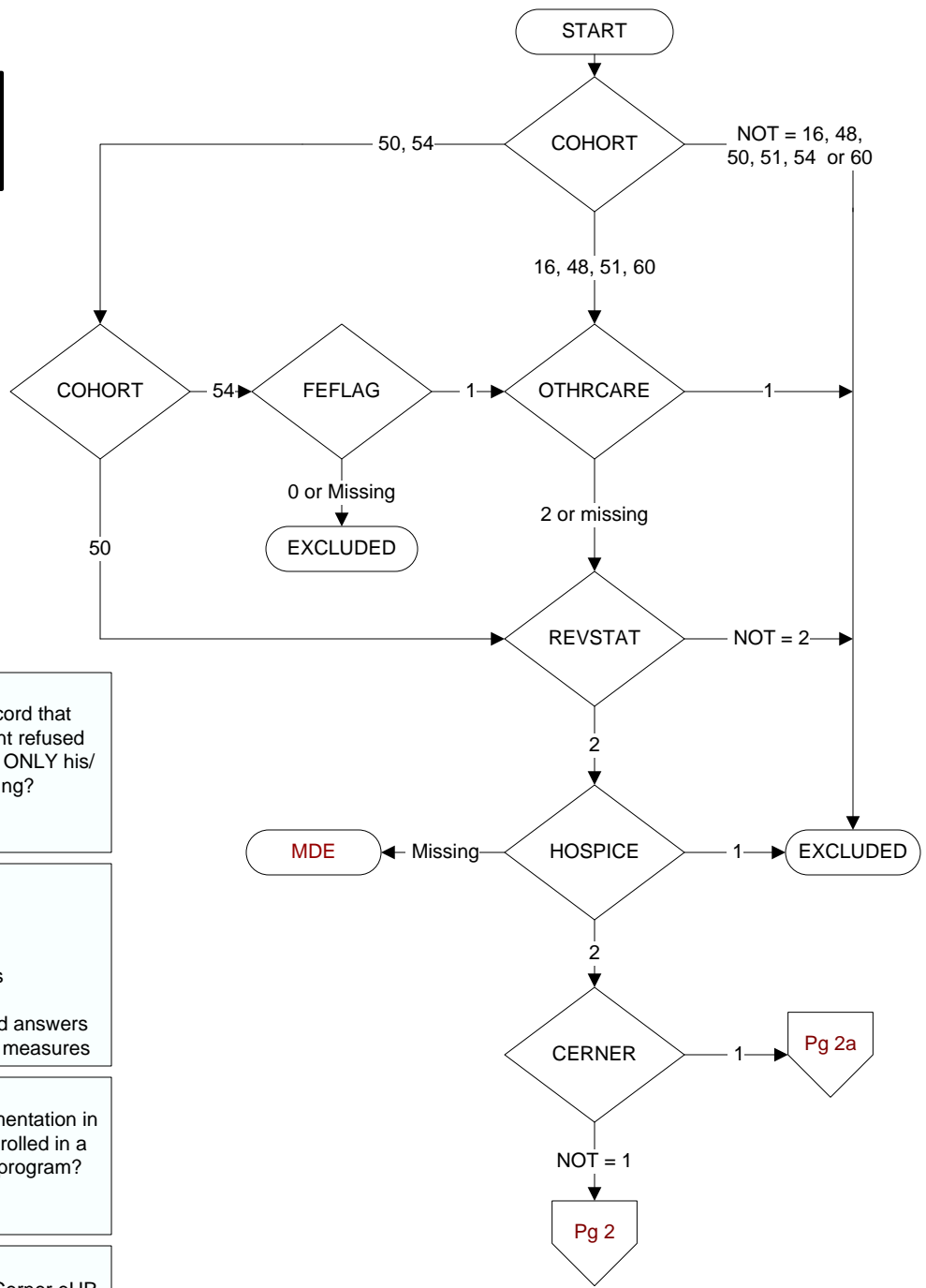
**OTHCARE** (Validation)  
 Is there evidence in the medical record that within the past two years, the patient refused VHA Primary Care and is receiving ONLY his/her primary care in a non-VHA setting?  
 1. yes  
 2. no

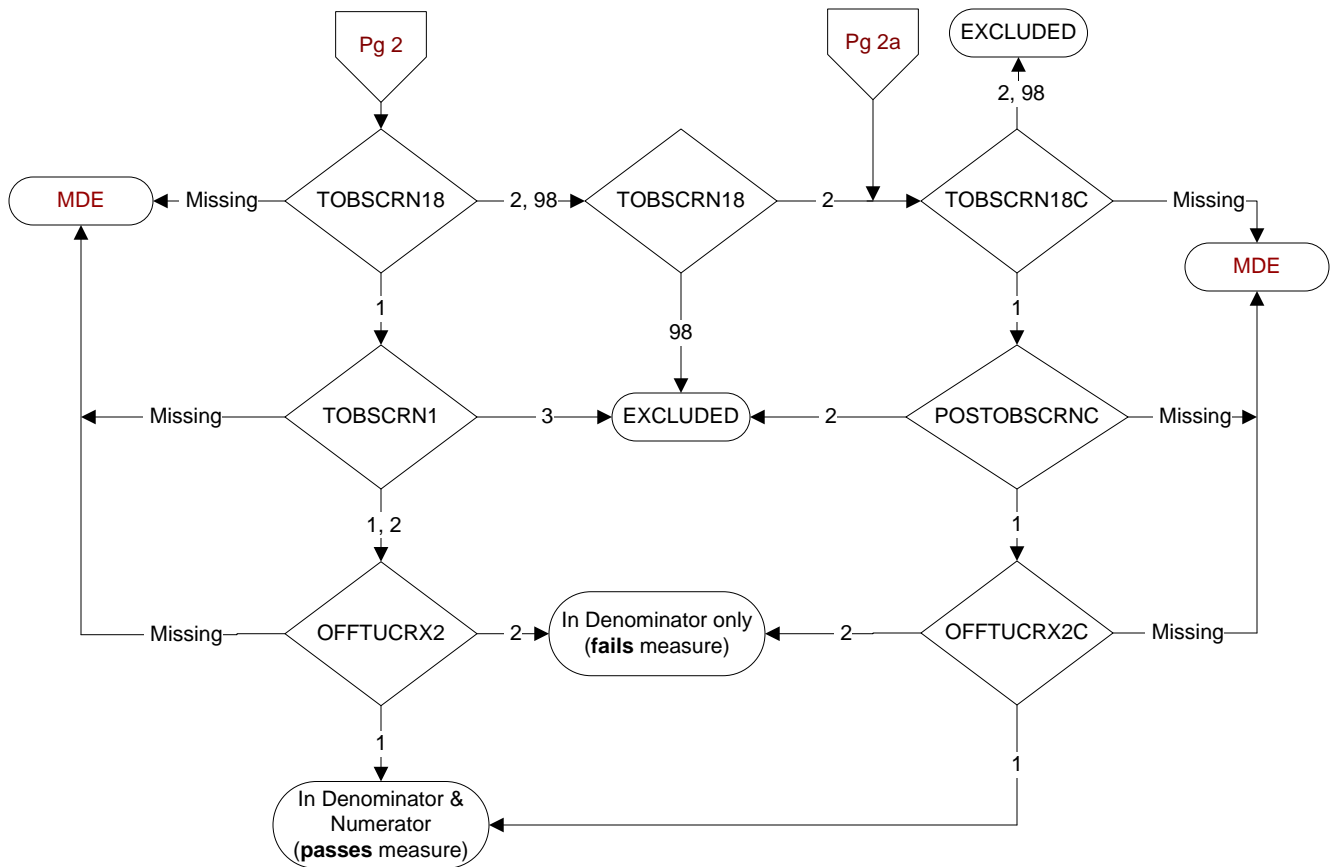
**REVSTAT**  
 REVIEW STATUS (not abstracted)  
 0. Abstraction has not begun  
 1. Abstraction in progress  
 2. Abstraction completed w/o errors  
 3. TVG failure (exclusion)  
 4. Record contains missing required answers  
 5. Administrative exclusion from all measures

**HOSPICE** (Validation)  
 During the past year is there documentation in the medical record the patient is enrolled in a VHA or community-based hospice program?  
 1. Yes  
 2. No

**CERNER** (system flag)  
 Flag indicating facility is using the Cerner eHR  
 1 = flagged  
 0 = not flagged

**MDE = Missing or Invalid Data Exclusion (data error)**





**TOBSCRN18 (PI)**  
 During the past year was the patient screened for tobacco use by an acceptable provider using the **National Clinical Reminder for Tobacco Use**?  
 1. Yes  
 2. No  
 98. Patient declined to answer National Clinical Reminder for Tobacco Use screening questions

**TOBSCRN1 (PI)**  
 Enter the response to Tobacco Use Screening question #1 "Do you smoke cigarettes, or use tobacco every day, some days, or not at all?"  
 1. Every Day  
 2. Some Days  
 3. Not at all

**OFFTUCRX2 (PI)**  
 During the past year, was the patient offered FDA approved medications by a provider to assist in tobacco use cessation using the National Clinical Reminder for Tobacco Use?  
 1. Yes  
 2. No

**TOBSCRN18C (PI)**  
 During the past year, was the patient screened for tobacco use by an acceptable provider?  
 1. Yes  
 2. No  
 98. Patient declined to answer screening questions

**POSTOBSRNC (PI)**  
 Was the tobacco screening done on (computer to display tobscrndtc) positive for tobacco use?  
 1. Yes  
 2. No

**OFFTUCRX2C (PI)**  
 During the past year, was the patient offered FDA approved medications by a provider to assist in tobacco use cessation?  
 1. Yes  
 2. No