

Document Links:[CGPI Validation Module](#)[CGPI PI Module](#)**COHORT**

16. AMI - Outpatient visit
 48. Female, age 20-69
 50. Random Sample
 51. Random Sample MH
 54. Frail/Elderly
 60. DM Outpatient

FEFLAG (rcvd on pull list)

FE case flagged for CGPI review / scoring?
 0. No
 1. Yes

OTHCARE (Validation)

Is there evidence in the medical record that within the past two years, the patient refused VHA Primary Care and is receiving ONLY his/her primary care in a non-VHA setting?

1. yes
 2. no

REVSTAT

REVIEW STATUS (not abstracted)

0. Abstraction has not begun
 1. Abstraction in progress
 2. Abstraction completed w/o errors
 3. TVG failure (exclusion)
 4. Record contains missing data
 5. Administrative exclusion from all measures

HOSPICE (Validation)

During the past year is there documentation in the medical record the patient is enrolled in a VHA or community-based hospice program?

1. Yes
 2. No

BNMRTRNS (PI)

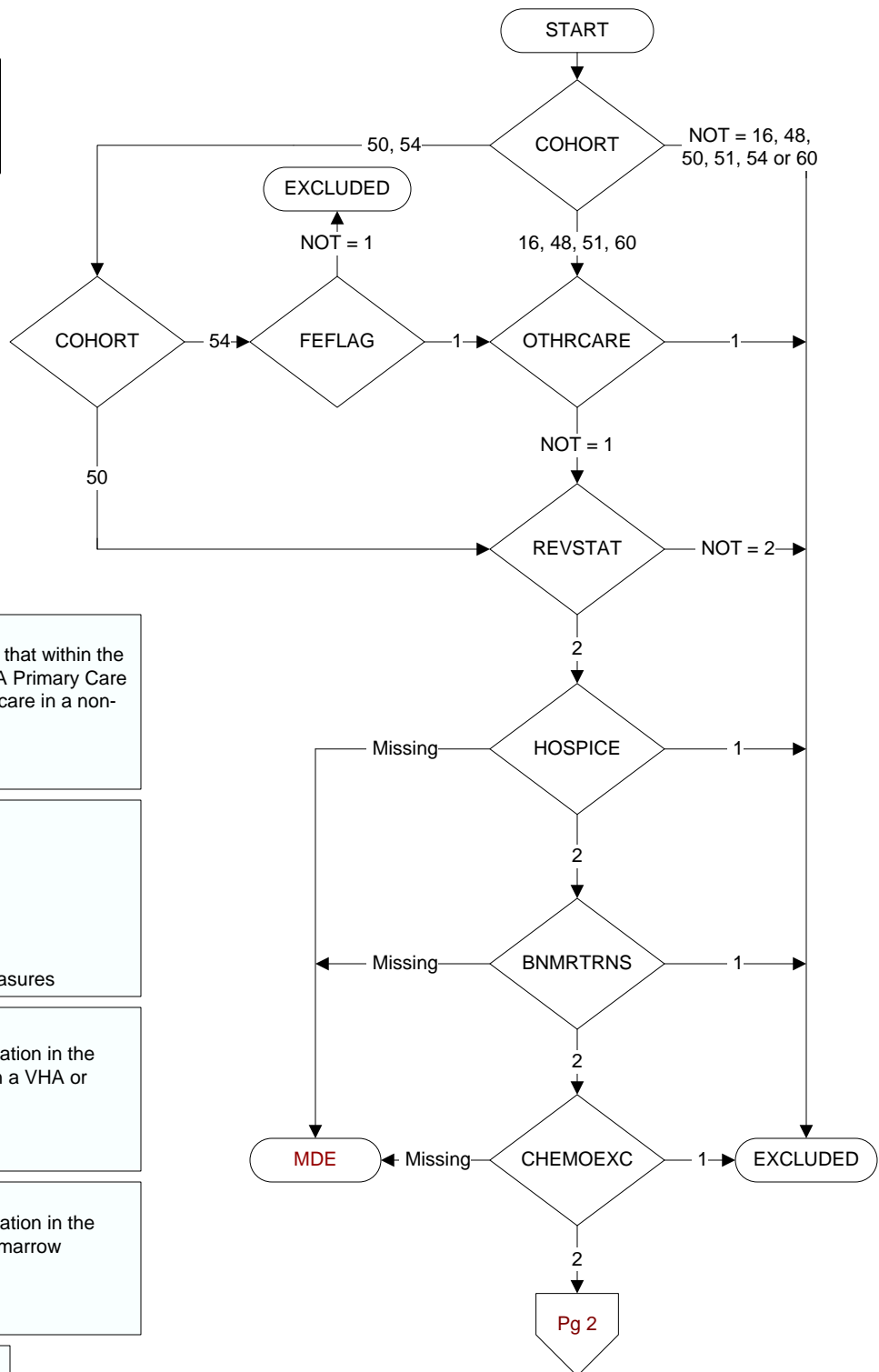
During the past year is there documentation in the medical record the patient had a bone marrow transplant?

1. Yes
 2. No

CHEMOEXC (PI)

Is there documentation in the medical record the patient received chemotherapy during the past year?

1. Yes
 2. No



**MDE = Missing or
 Invalid Data Exclusion
 (data error)**

