

**Document Links:**[Sepsis Instrument](#)**REVSTAT**

REVIEW STATUS (not abstracted)

- 0. Abstraction has not begun
- 1. Abstraction in progress
- 2. Abstraction completed w/o errors
- 3. Cohort validation failure (exclusion)
- 4. Record contains missing data
- 5. Administrative exclusion from all measures

**AGE**

Calculated field – ADMDT - BIRTHDT

**DCDT**

Discharge date

**LACTATE**

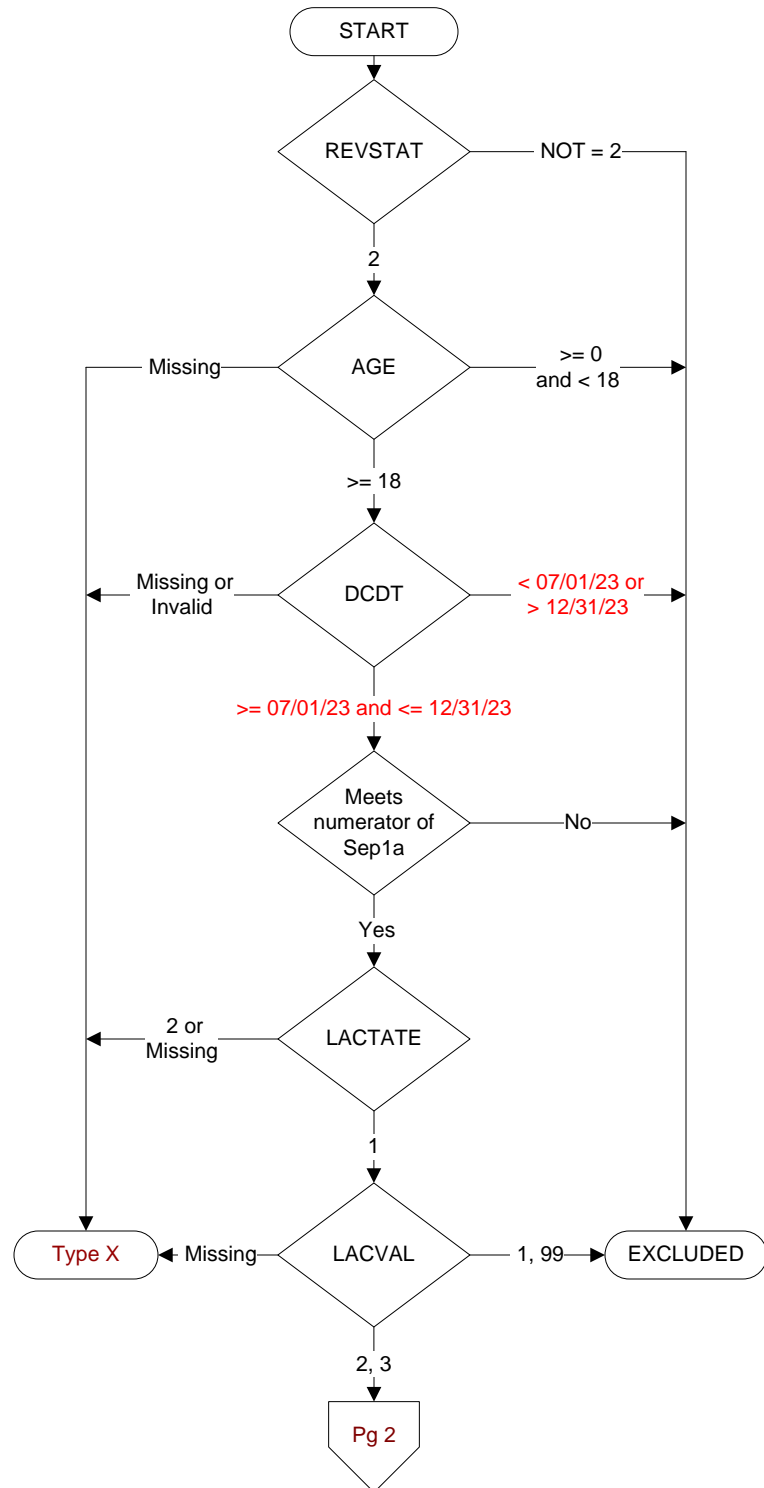
During the timeframe from (computer display  
sepresdt/seprestm - 6 hours to sepresdt/  
seprestm + 3 hours) was an initial lactate level  
drawn (or collected)?

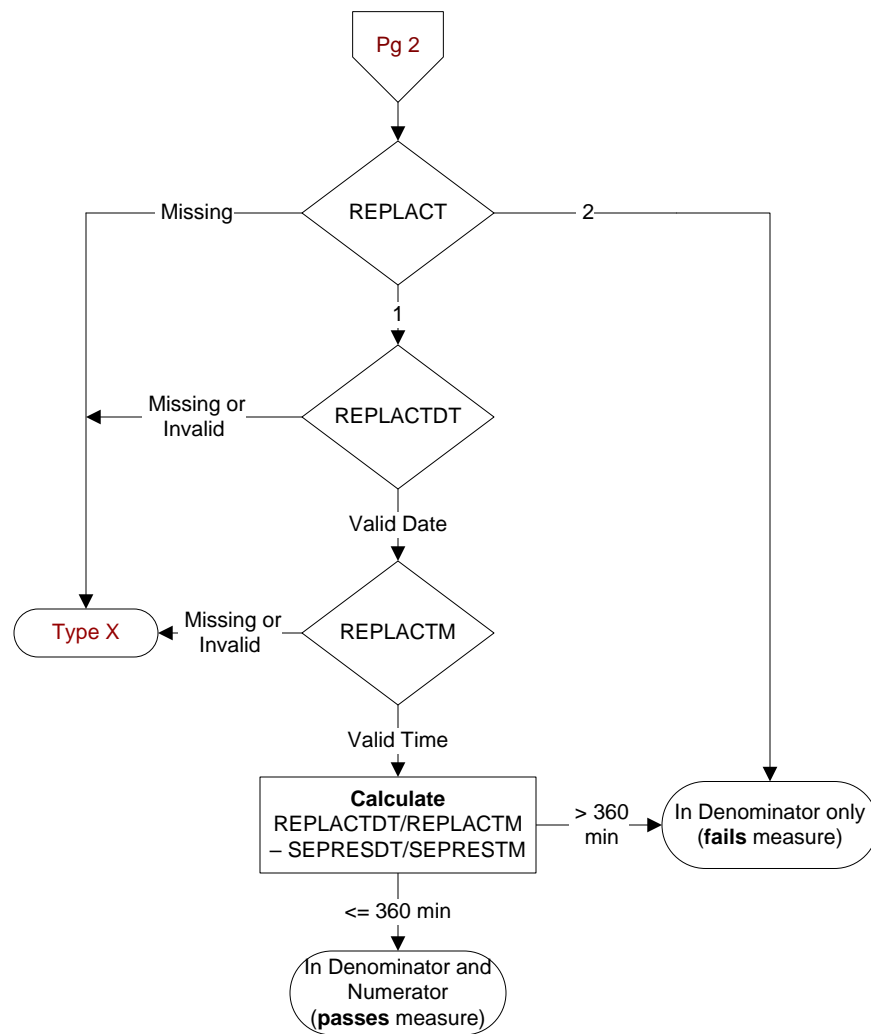
- 1. Yes
- 2. No

**LACVAL**

What initial lactate level result was documented  
in the record?

- 1.  $\leq 2$  mmol/L (less than or equal to 2 mmol/L)
- 2.  $> 2$  and  $< 4.0$  mmol/L (greater than 2 mmol/L and less than 4 mmol/L)
- 3.  $\geq 4$  mmol/L (4 mmol/L or greater)
- 99. Initial lactate result was not documented or unable to determine result



**REPLACT**

During the timeframe from (computer display sepresdt/seprestm to sepresdt/seprestm +6 hours) was a repeat lactate level drawn?

1. Yes
2. No

**REPLACTDT / REPLACTM**

During the timeframe from (computer to display lacdt/lactm to sepresdt/seprestm + 6 hours), enter the earliest date and time the repeat lactate level was drawn (or collected).

**SEPRESDT**

Computer to auto-fill earliest valid date entered in sepd2, shkdt, or sepsisd2.

**SEPRESTM**

Computer to auto-fill earliest valid time entered in septm2, shktm, or sepsistm.