

**Document Links:**

[CGPI Validation Module](#)

[CGPI CVD Module](#)

**COHORT**

16. AMI - Outpatient visit  
48. Female, age 20-69  
50. Random Sample  
51. Random Sample MH  
54. Frail/Elderly  
60. DM Outpatient  
68. Contract CBOC

**FEFLAG** (rcvd on pull list)

FE case flagged for CGPI review / scoring?  
0. No  
1. Yes

**OTHCARE** (Validation)

Is there evidence in the medical record that within the past two years, the patient refused VHA Primary Care and is receiving ONLY his/her primary care in a non-VHA setting?  
1. yes  
2. no

**REVSTAT**

REVIEW STATUS (not abstracted)  
0. Abstraction has not begun  
1. Abstraction in progress  
2. Abstraction completed w/o errors  
3. TVG failure (exclusion)  
4. Record contains missing data  
5. Administrative exclusion f

**HOSPICE** (Validation)

During the past year is there documentation in the medical record the patient is enrolled in a VHA or community-based hospice program?  
1. Yes  
2. No

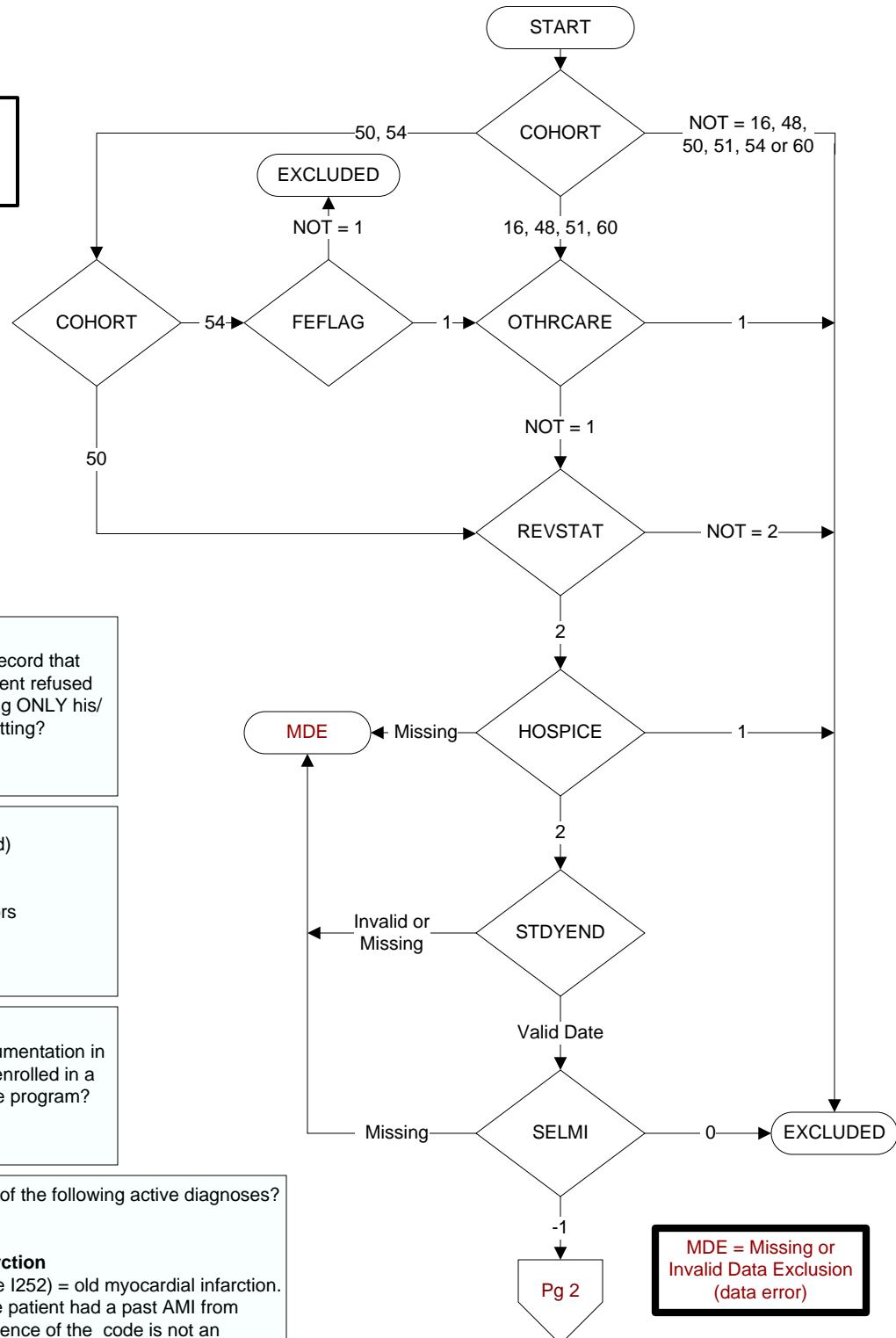
Did the patient have one or more of the following active diagnoses? (Validation)

**SELM1** 4 = Old Myocardial Infarction

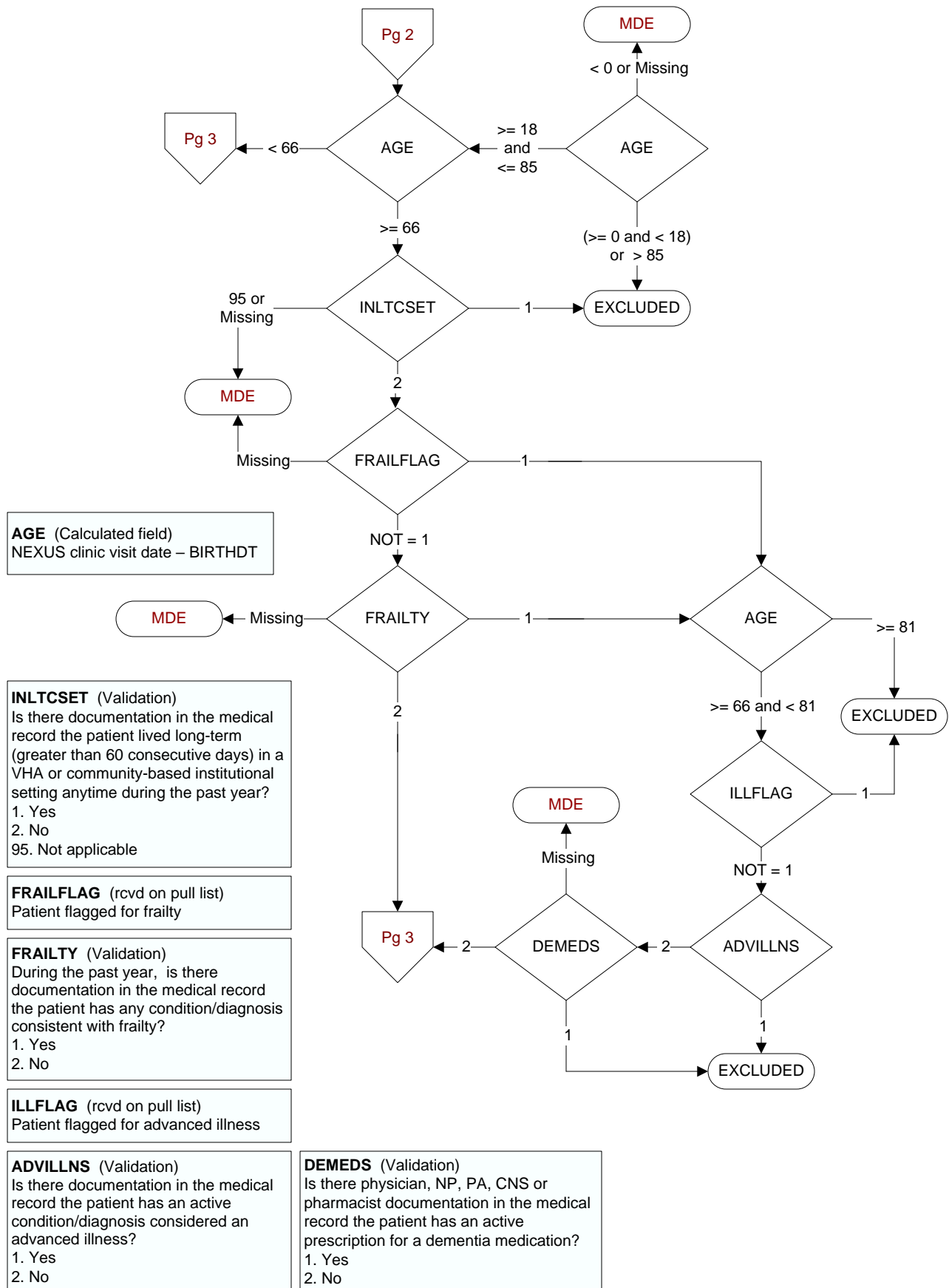
ICD-9-CM code 412 (ICD-10 code I252) = old myocardial infarction. The abstractor may determine the patient had a past AMI from clinician documentation, and presence of the code is not an absolute requirement

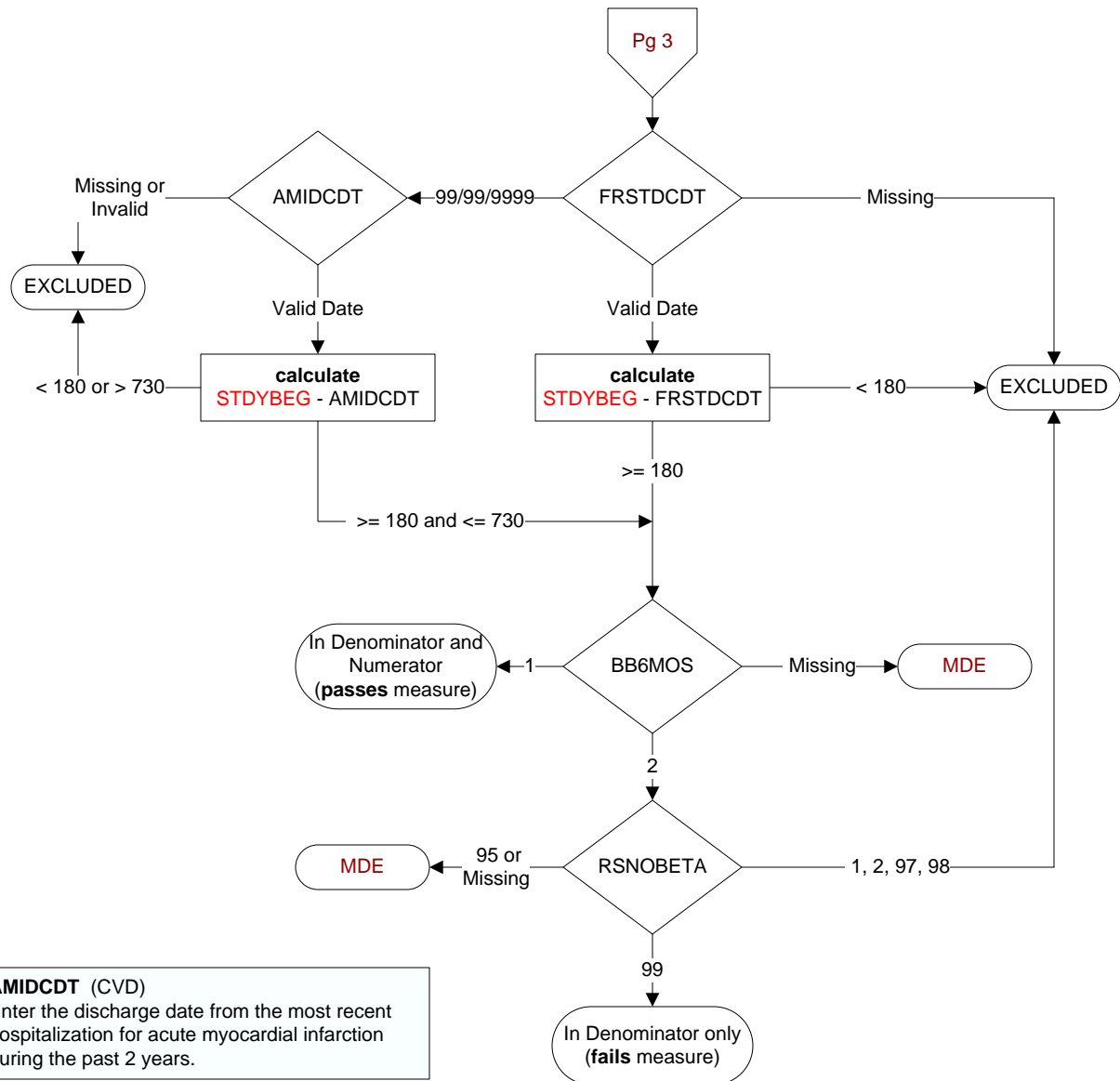
-1 Yes  
0 No

**STDYEND** (rcvd on pull list).  
Last day of study interval



**MDE = Missing or Invalid Data Exclusion (data error)**



**AMIDCDT (CVD)**

Enter the discharge date from the most recent hospitalization for acute myocardial infarction during the past 2 years.

**FRSTDCDT (CVD)**

Enter the date of the discharge associated with the first episode of AMI within the last 18 months.

**BB6MOS (CVD)**

Is there documentation in the medical record the patient was on a beta-blocker continuously during the timeframe from (computer to display most recent of amidcdt or frstdcdt + 179 days)?

**Examples of beta-blockers include, but are not limited to:**

- metoprolol succinate or tartrate
- carvedilol
- atenolol
- nadolol
- propranolol
- combination of beta-blockers with other drugs

1. Yes
2. No
95. Not applicable

**RSNOBETA (CVD)**

On (computer to display most recent of amidcdt or frstdcdt), does the record document any of the following reasons for not prescribing a beta-blocker?

1. Beta-blocker allergy
2. Bradycardia (heart rate less than 60 bpm)
95. Not applicable
97. Other reasons documented by a physician/APN/PA or pharmacist for not prescribing a beta-blocker
98. Patient refusal of beta-blockers documented by physician/APN/PA or pharmacist
99. No documented reason