

**Document Links:**[HBPC Instrument](#)**COHORT**

69 – Home Based Primary Care

**ASESOXY2 (HBPC)**

During the time frame from (computer to display admisdt – 30 days to admisdt + 30 days) at a face-to-face or CVT encounter, was a home oxygen safety risk assessment documented by a HBPC team member to include all of the following components?

- Whether there are smoking materials in the home,
- Whether or not the home has functioning smoke detectors, and
- Whether there are other fire safety risks in the home, such as the potential for open flames

3. Yes, a home oxygen safety risk assessment including all components above was documented by a HBPC team member during a **face-to-face encounter** in the patient's home

4. Yes, a home oxygen safety risk assessment including all components above was documented by a HBPC team member during a **CVT encounter**

5. No home oxygen safety risk assessment was documented by a HBPC team member during a face-to-face or CVT encounter

During the HBPC team face-to-face or CVT encounter on (computer to display asesoxdyt), did the HBPC team member inform and educate the patient/caregiver on home oxygen safety to include:

**OXYEDU1.** The findings of the oxygen safety risk assessment

1. Yes

2. No

**OXYEDU2.** The causes of fire

1. Yes

2. No

**OXYEDU3.** Fire risks for neighboring residences and buildings

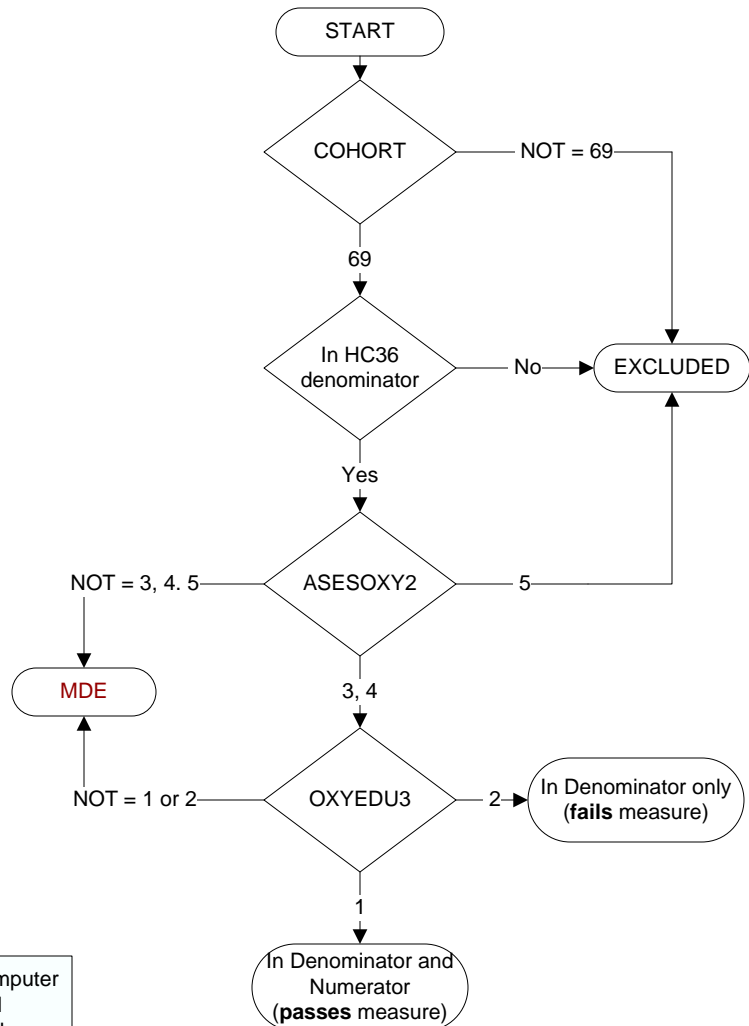
1. Yes

2. No

**OXYEDU4.** Precautions that can prevent fire-related injuries

1. Yes

2. No



**MDE = Missing or  
Invalid Data Exclusion  
(data error)**