

**Document Links:**[HBPC Instrument](#)**CATNUM**

Sample cohort  
HBPC – Home Based Primary Care

**REVSTAT**

REVIEW STATUS (not abstracted)

- 0. Abstraction has not begun
- 1. Abstraction in progress
- 2. Abstraction completed w/o errors
- 3. TVG failure (exclusion)
- 4. Record contains missing required answers
- 5. Administrative Exclusion

**HCSTATUS** (HBPC)

Counting from the most recent HBPC encounter within the study interval, enter the patient's status in regard to HBPC admission:

- 2. HBPC admission greater than or equal to 30 days but less than or equal to 1 year
- 3. HBPC admission greater than one year (>365 days from the admission date)

**STDYBEG**

Study Begin date - not abstracted - received on pull list

**ADMISDT** (HBPC)

Enter the HBPC admission date. **Admission date is date of the progress note documenting admission.**

**INPTADM** (HBPC)

During the time frame from (computer display admisdt to admisdt + 30 days), did the record document the patient was hospitalized?

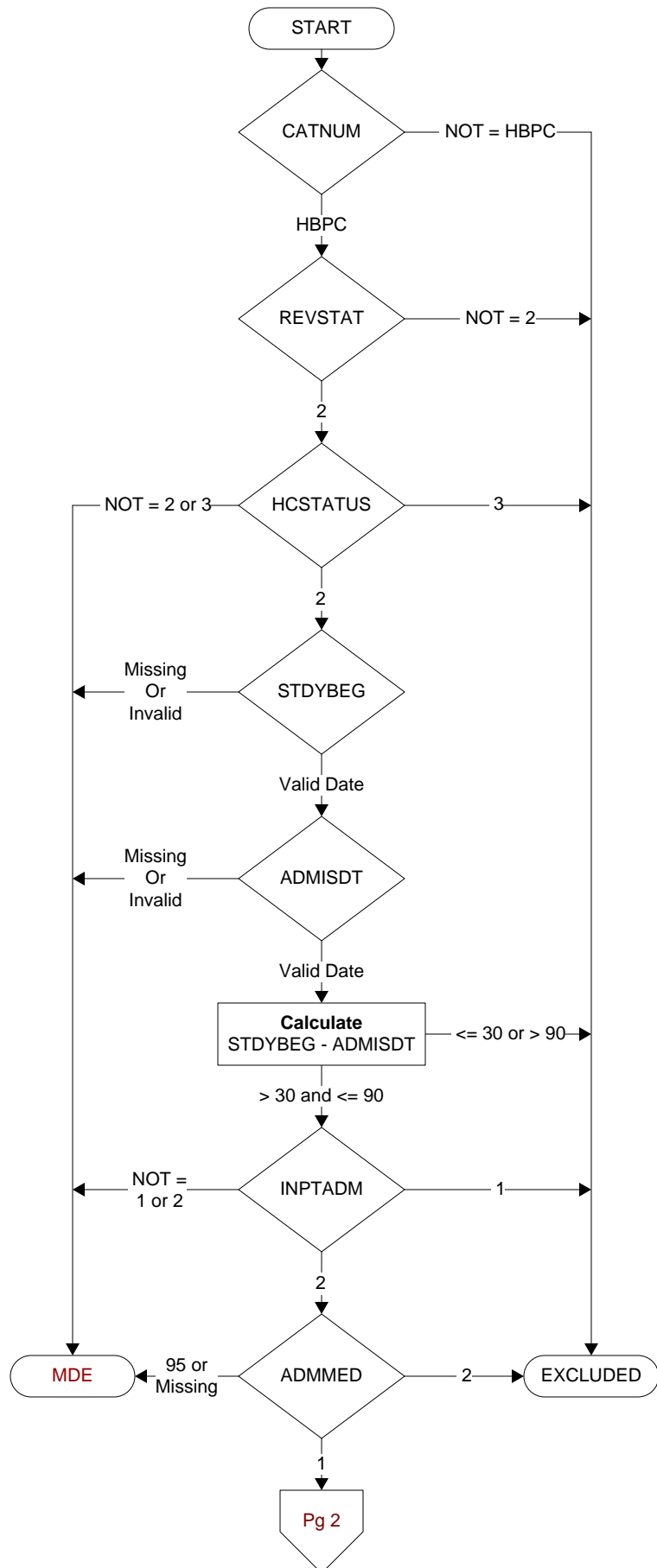
- 1. Yes
- 2. No

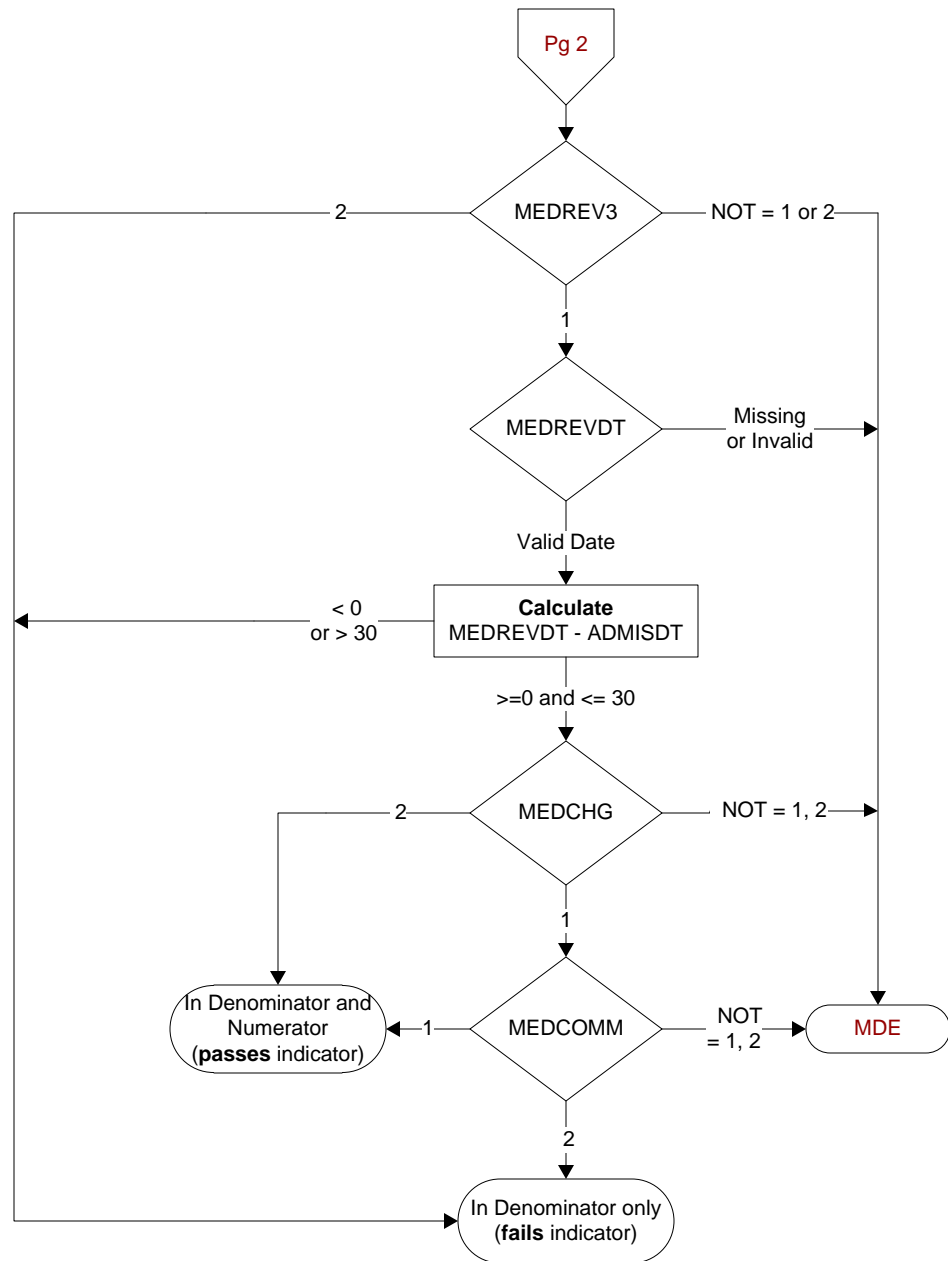
**ADMMED** (HBPC)

At the time of HBPC admission, was the patient on at least one medication?

- 1. Yes
- 2. No

**MDE = Missing or Invalid Data Exclusion (data error)**



**MEDREV3 (HBPC)**

During the time frame from (computer to display admisdt to admisdt + 30 days), did the record document the patient's HBPC medication management plan in a note signed by the pharmacist?

1. Yes
2. No

**MEDREVDT (HBPC)**

Enter the date of the most recent medication management plan review.

**MEDCHG (HBPC)**

Did the pharmacist make any recommendation for change in the patient's medication regimen?

1. Yes
2. No

**MEDCOMM (HBPC)**

Did the pharmacist communicate any change in the patient's medication regimen to the HBPC or primary care provider?

1. Yes
2. No