

## Document Links:

[VTE Instrument](#)

**CATNUM** (rcvd on pull list)  
Sample category number  
66 – Principal VTE sub-population  
67 – Secondary VTE sub-population

**REVSTAT**  
REVIEW STATUS (not abstracted)  
0. Abstraction has not begun  
1. Abstraction in progress  
2. Abstraction completed w/o errors  
3. TVG failure (exclusion)  
4. Record contains missing required answers  
5. Administrative exclusion from all measures

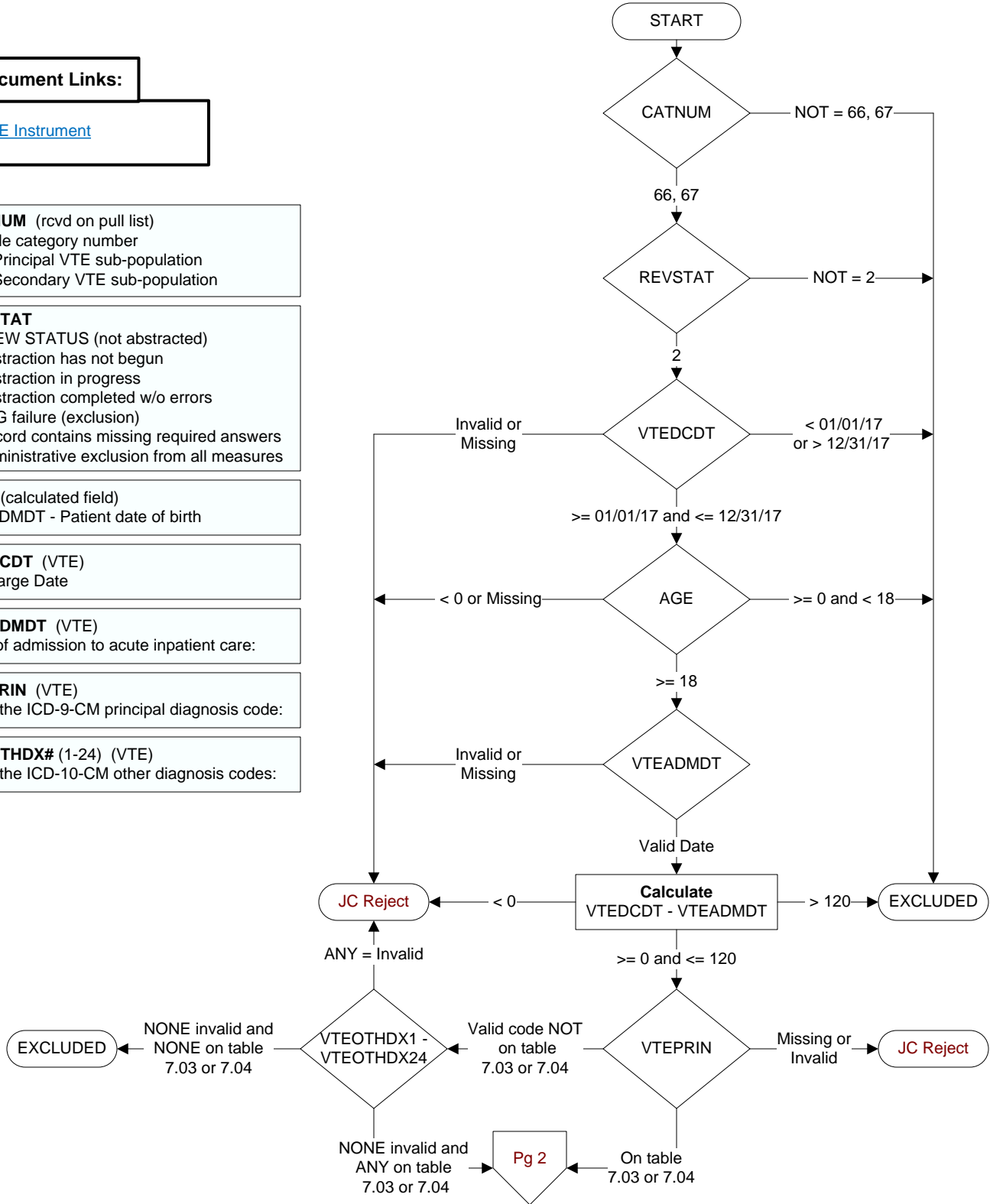
**AGE** (calculated field)  
VTEADMDT - Patient date of birth

**VTEDCDT** (VTE)  
Discharge Date

**VTEADMDT** (VTE)  
Date of admission to acute inpatient care:

**VTEPRIN** (VTE)  
Enter the ICD-9-CM principal diagnosis code:

**VTEOTHDX#** (1-24) (VTE)  
Enter the ICD-10-CM other diagnosis codes:



**COMFORT (VTE)**

When is the earliest physician, APN, or PA documentation of comfort measures only?

1. Day of arrival (day 0) or day after arrival (day 1)
2. Two or more days after arrival (day 2 or greater)
3. Comfort measures only documented during hospital stay, but timing unclear
99. Comfort measures only was not documented by the physician/APN/PA or unable to determine

**CLNTRIAL (VTE)**

During this hospital stay, was the patient enrolled in a clinical trial in which patients with venous thromboembolism (VTE) were being studied?

1. Yes
2. No

**DCDISPO (VTE)**

What was the patient's discharge disposition on the day of discharge?

1. Home
  - Assisted Living Facilities (ALFs) -- includes assisted living care at nursing home/facility
  - Court/Law Enforcement -- includes detention facilities, jails, and prison
  - Home - includes board and care, domiciliary, foster or residential care, group or personal care homes, retirement facilities and homeless shelters
  - Home with Home Health Services
  - Outpatient Services including outpatient procedures at another hospital, outpatient Chemical Dependency Programs and Partial Hospitalization
2. Hospice -- Home (or other home setting as listed in #1 above)
3. Hospice -- Health Care Facility
  - General Inpatient and Respite, Residential and Skilled Facilities, and Other Health Care Facilities
4. Acute Care Facility
  - Acute Short Term General and Critical Access Hospitals
  - Cancer and Children's Hospitals
  - Department of Defense and Veteran's Administration Hospitals
5. Other Health Care Facility
  - Extended or Immediate Care Facility (ECF/ICF)
  - Long Term Acute Care Hospital (LTACH)
  - Nursing Home or Facility including Veteran's Administration Nursing Facility
  - Psychiatric Hospital or Psychiatric Unit of a Hospital
  - Rehabilitation Facility including Inpatient Rehabilitation Facility/Hospital or Rehabilitation Unit of a Hospital
  - Skilled Nursing Facility (SNF), Sub-Acute Care or Swing Bed
  - Transitional Care Unit (TCU)
  - Veteran's Home
6. Expired
7. Left Against Medical Advice/AMA
99. Not documented or unable to determine

**VTETEST (VTE)**

Is there documentation that a diagnostic test for VTE was performed within four days prior to arrival or anytime during the hospitalization?

**VTE Diagnostic testing includes the following (ALL Inclusive):**

- Compression Ultrasound/Vascular Ultrasound/Duplex ultrasound (DUS)/Venous Doppler of lower extremities
- Computed tomography (CT) of thorax (chest), abdomen/pelvis, or lower extremity leg veins with contrast
- Magnetic resonance imaging (MRI or MRV) of the thorax(chest), abdomen/pelvis, or lower extremity leg veins
- Nuclear Medicine Pulmonary Scan/ventilation/perfusion (V/Q) lung scan
- Pulmonary arteriography/angiography/angiogram
- Venography/Venogram of pelvic, femoral or other lower extremity veins using contrast material

1. Yes
2. No

**POSVTE (VTE)**

Is there physician/APN/PA documentation that the VTE Diagnostic Test confirmed a diagnosis of VTE in one of the defined locations within four calendar days prior to arrival, or anytime during hospitalization?

**VTE Confirmed in Defined Locations:**

- Pulmonary Emboli (PE)
- Deep Vein Thrombosis (DVT) located in common femoral vein; Common Iliac; External iliac vein; Femoral/superficial femoral vein; inferior vena cava (IVC); Internal iliac, popliteal vein; Profunda/deep femoral vein.

1. Yes
2. No or unable to determine from medical record documentation

**WARFADM (VTE)**

Is there documentation that warfarin was administered any time after the VTE diagnostic test?

1. Yes
2. No

