

CATNUM

Sample category
 16. AMI - Outpatient visit
 36. SCI Dx
 48. Female, age 20-69
 50. Random Sample
 51. Random Sample MH
 54. Frail/Elderly
 60. DM Outpatient
 61. Inpatient SC
 68. Contract CBOC

FEFLAG (rcvd on pull list)

FE case flagged for CGPI
 review / scoring?

0. No
 1. Yes

REVSTAT

REVIEW STATUS (not abstracted)

0. Abstraction has not begun
 1. Abstraction in progress
 2. Abstraction completed w/o errors
 3. TVG failure (exclusion)
 4. Record contains missing required answers (error record)
 5. Administrative exclusion from all measures

DEMENTDX2 (MH)

During the past year, does the record document a diagnosis of dementia/neurocognitive disorder as evidenced by one of the following ICD-9-CM codes?

(046.1, 046.11, 046.19, 046.3, 290.0, 290.10, 290.11, 290.12, 290.13, 290.20, 290.21, 290.3, 290.40, 290.41, 290.42, 290.43, 291.2, 292.82, 294.10, 294.11, 294.8, 331.0, 331.11, 331.19, 331.2, 331.7, 331.82, 331.89, 331.9, 333.0 or 333.4)

1. Yes
 2. No

DEMSEV (MH)

Was the severity of dementia assessed during the past year using one of the following standardized tools?

1. Clinical Dementia Rating Scale (CDR)
 2. Functional Assessment Staging Tool (FAST)
 3. Global Deterioration Scale (GDS)
 99. Severity of dementia was not assessed during the past year using one of the specified tools

COGSCOR2 (MH)

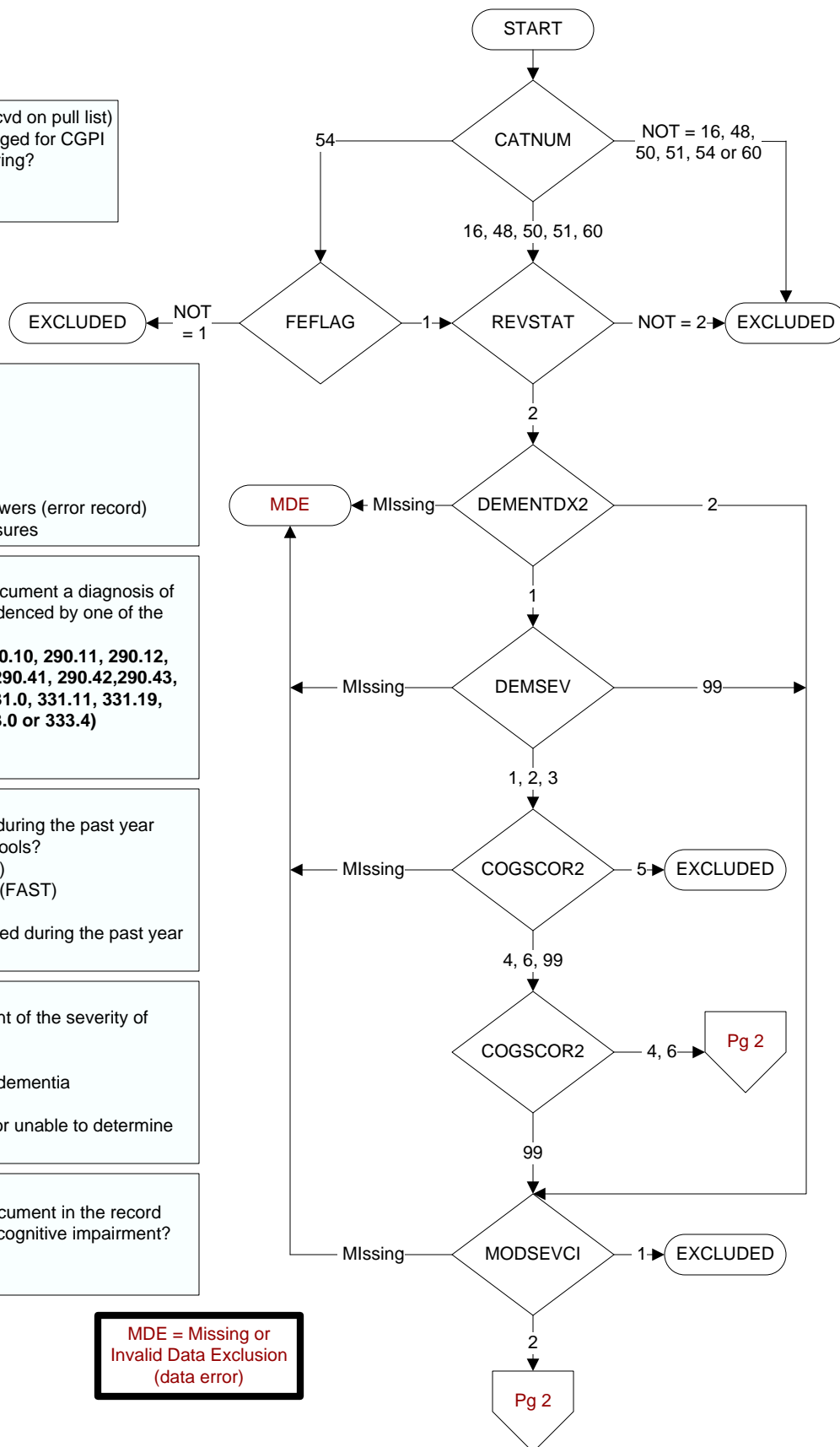
What was the outcome of the assessment of the severity of dementia assessment?

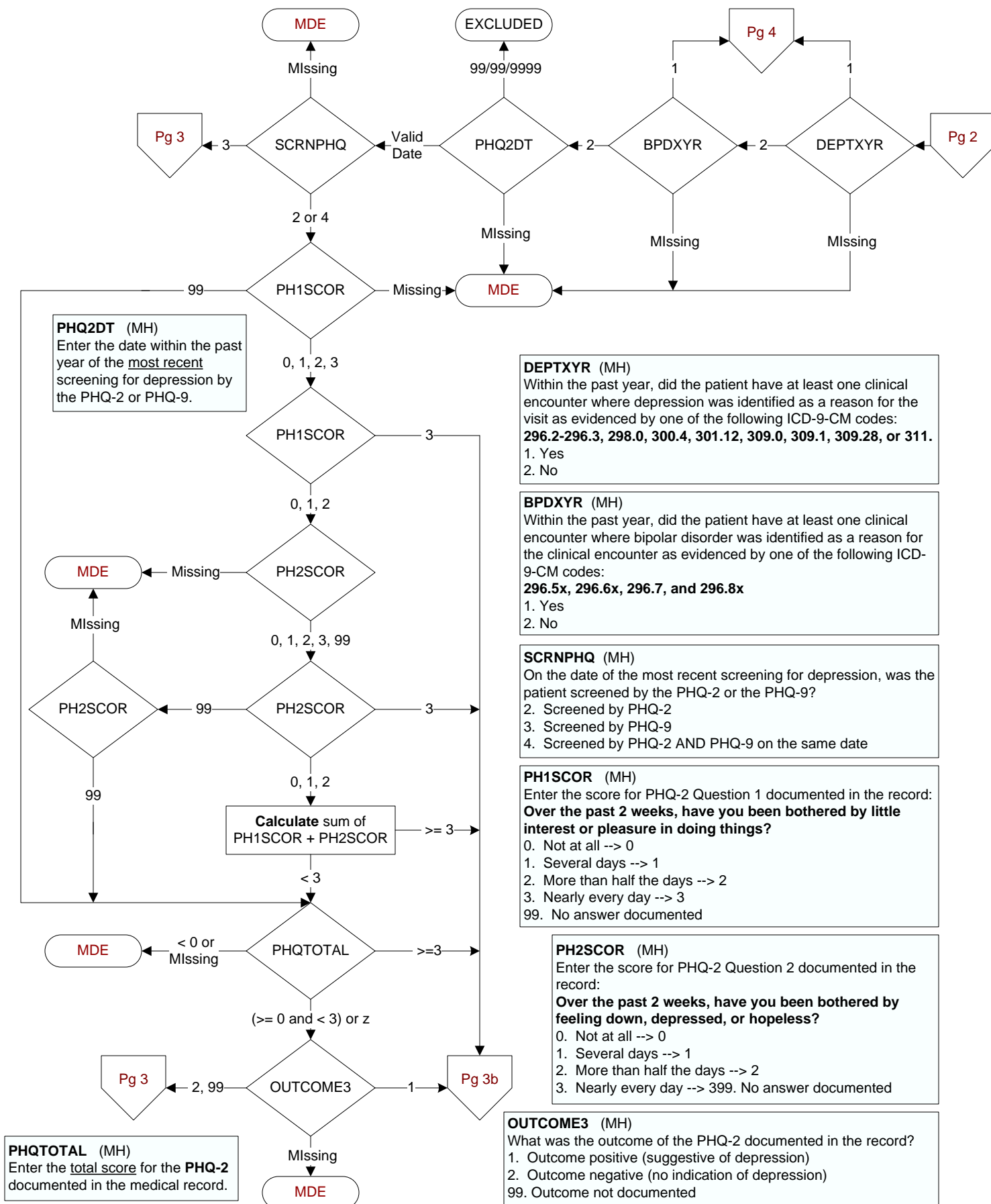
4. Score indicated mild dementia
 5. Score indicated moderate to severe dementia
 6. Score indicated no dementia
 99. No score documented in the record or unable to determine outcome

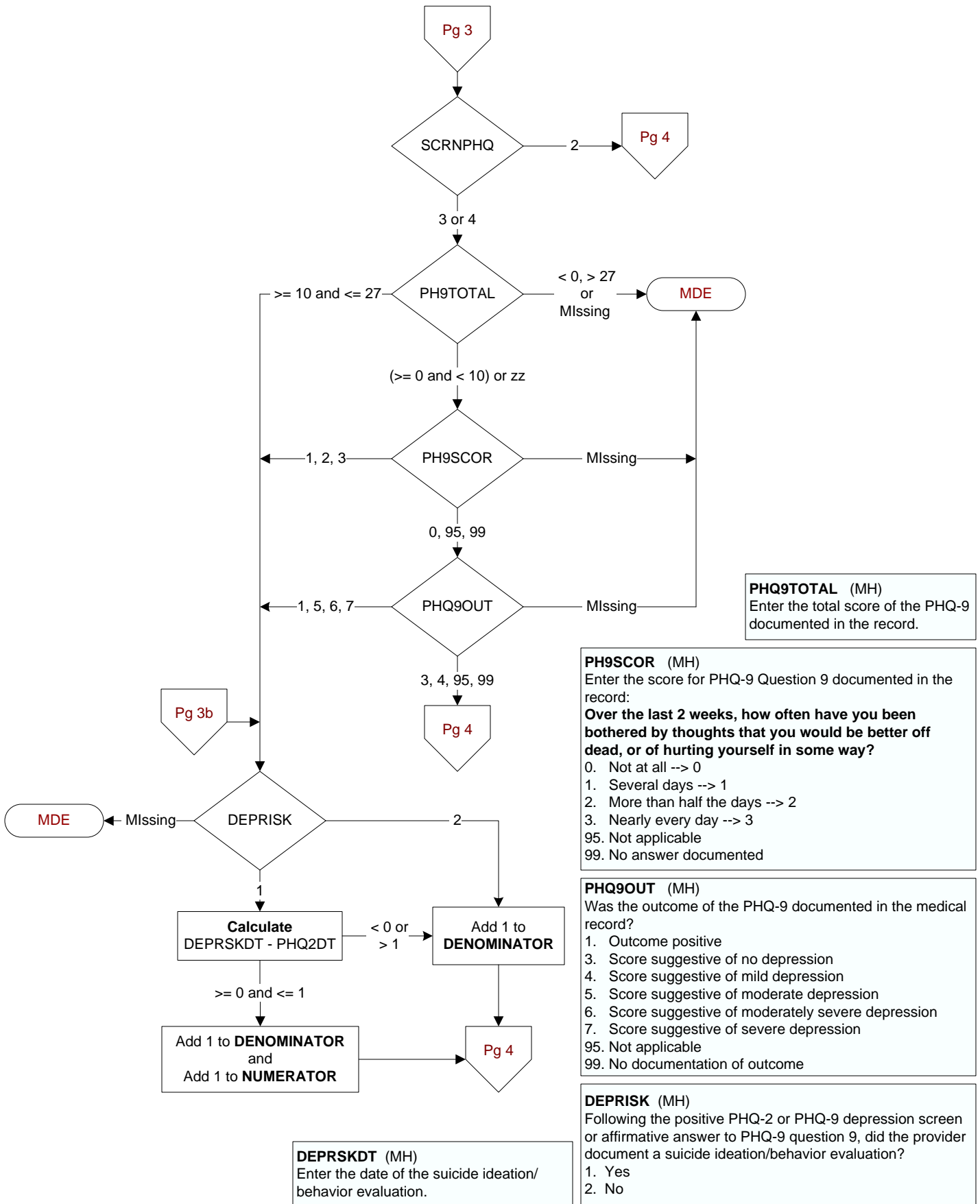
MODSEVCI (MH)

During the past year, did the clinician document in the record that the patient has moderate or severe cognitive impairment?

1. Yes
 2. No







PTSDX (MH)

Within the past year, did the patient have at least one clinical encounter where PTSD was identified as a reason for the clinical encounter as evidenced by ICD-9-CM code 309.81?

1. Yes
2. No

PTSRNPC (MH)

Within the past five years, was the patient screened for PTSD using the Primary Care PTSD Screen (PC-PTSD)?

1. Yes
2. No

PCPTSDT (MH)

Enter the date of the most recent screen for PTSD using the PC-PTSD.

STDYBEG

(Rcvd on Pull List)
Study Interval begin date

PTSDSCOR (MH)

Enter the total score for the screen documented in the record.
(Abstractor can enter default z if no total score is documented)

PCPTSD (MH)

Enter the patient's answers to each of the Primary Care PTSD Screen questions:

Have you ever had any experience that was so frightening, horrible, or upsetting that, **IN THE PAST MONTH**, you: **PCPTSD1**. Have had any nightmares about it or thought about it when you did not want to?

PCPTSD2. Tried hard not to think about it or went out of your way to avoid situations that remind you of it?

PCPTSD3. Were constantly on guard, watchful, or easily startled?

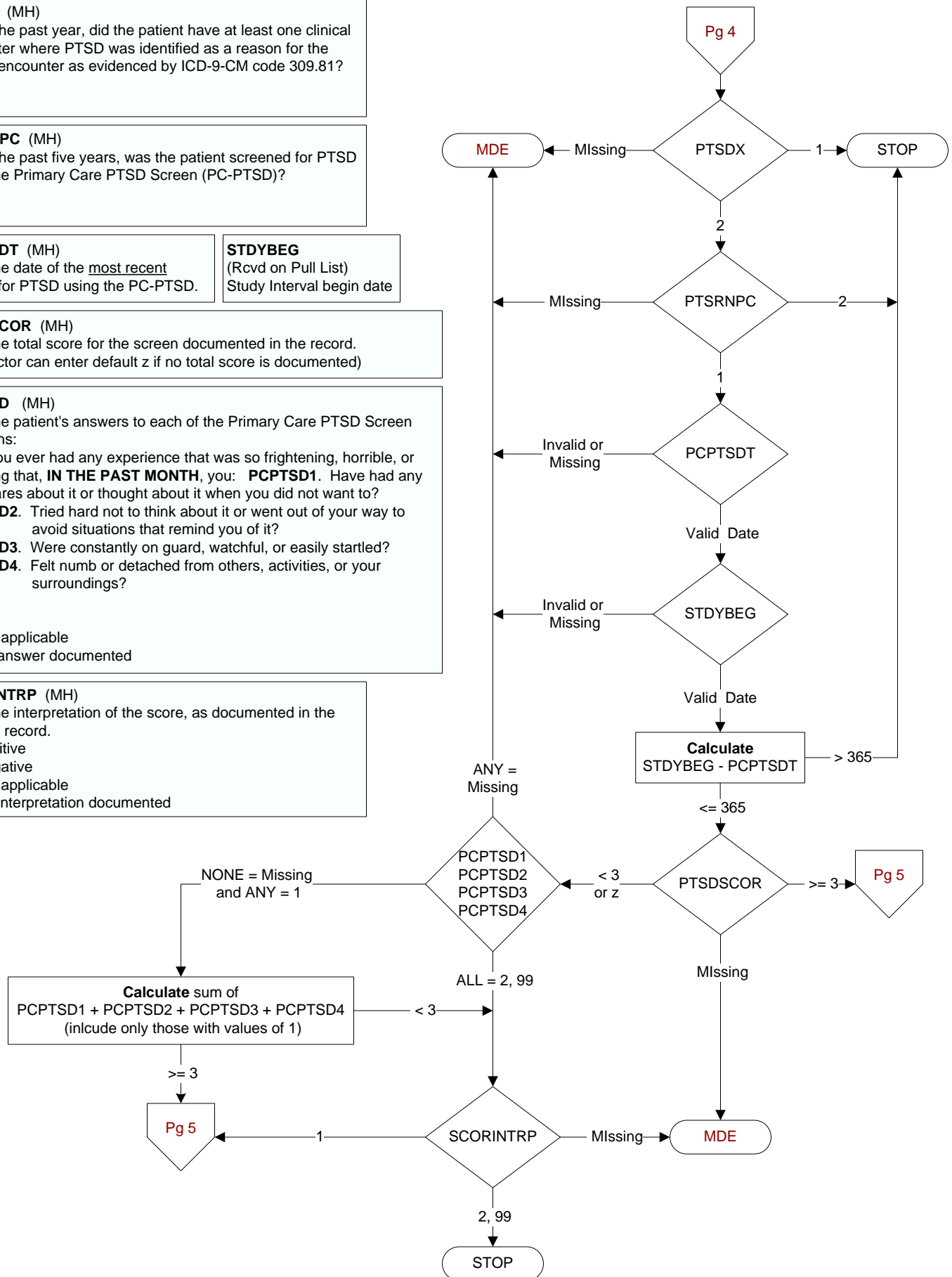
PCPTSD4. Felt numb or detached from others, activities, or your surroundings?

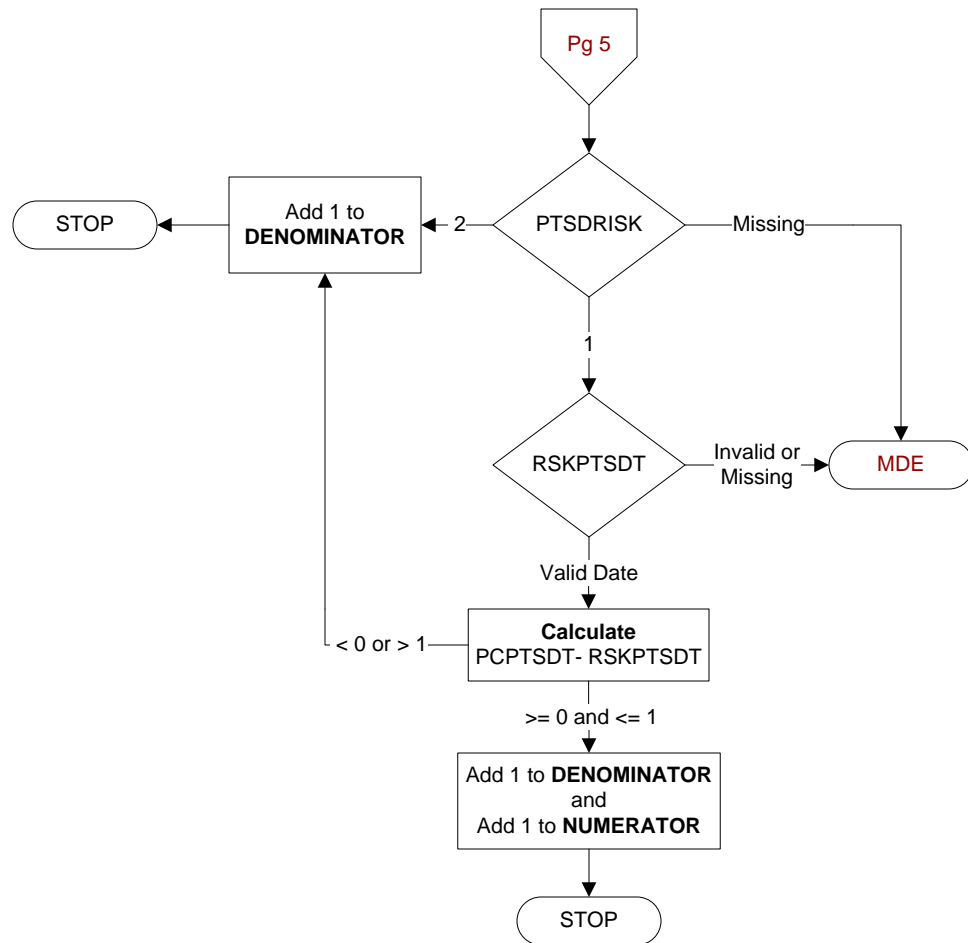
1. Yes
2. No
95. Not applicable
99. No answer documented

SCORINTRP (MH)

Enter the interpretation of the score, as documented in the medical record.

1. Positive
2. Negative
95. Not applicable
99. No interpretation documented





PTSDRISK (MH)

Following the positive PC-PTSD screen, did the licensed independent provider document a suicide ideation/behavior evaluation?

1. Yes
2. No

RSKPTSDT (MH)

Enter the date of the suicide ideation/behavior evaluation.