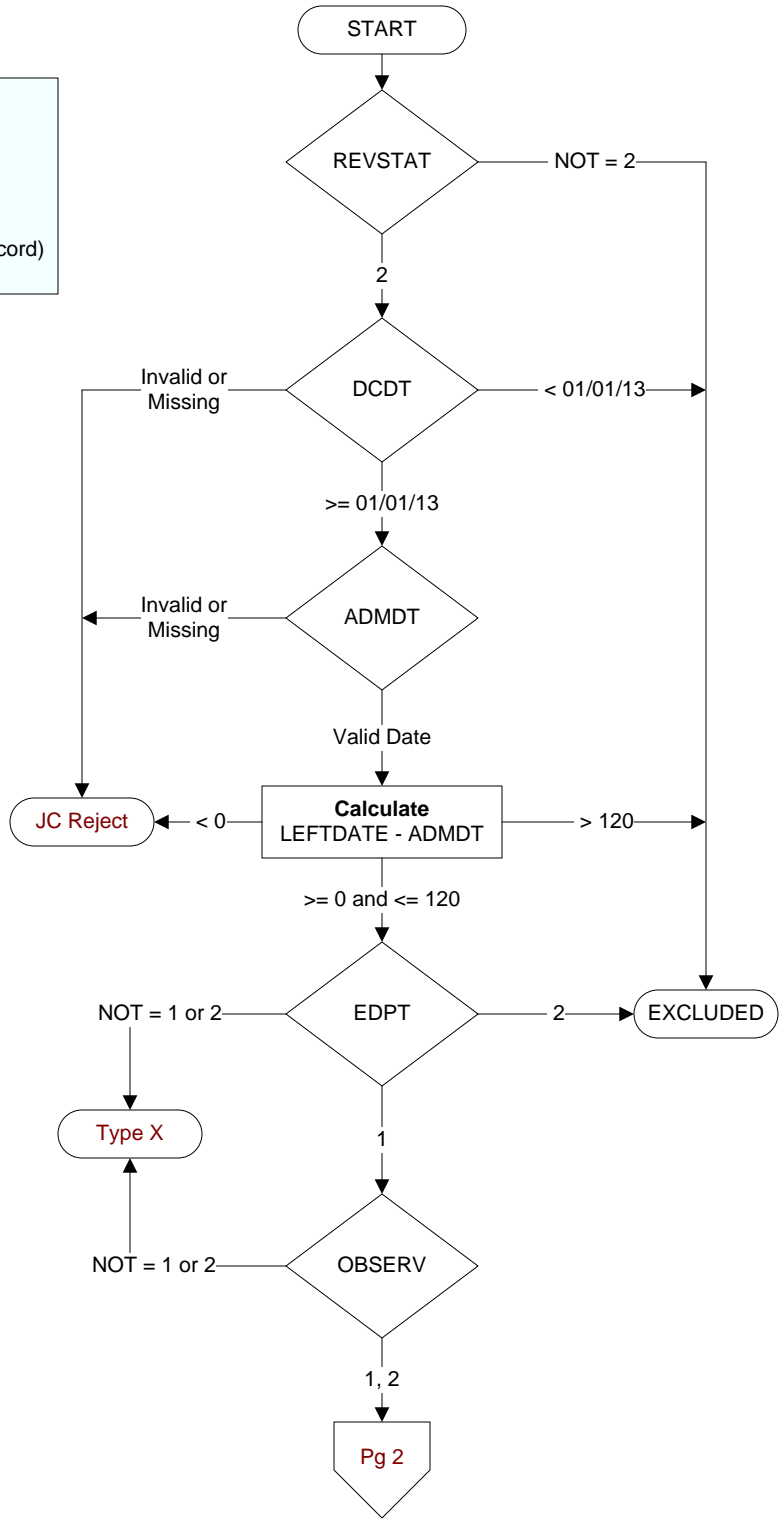


- REVSTAT**  
REVIEW STATUS (not abstracted)  
0. Abstraction has not begun  
1. Abstraction in progress  
2. Abstraction completed w/o errors  
3. TVG failure (exclusion)  
4. Record contains missing required answers (error record)  
5. Administrative exclusion from all measures
- DCDT** (Validation)  
Discharge date.
- ADMDT** (Validation)  
Admission date:
- EDPT** (Validation)  
Did the patient receive care/services in the Emergency Department of this VAMC?  
1. Yes  
2. No
- OBSERV** (Validation)  
Was there documentation of an order for observation services written by the physician/ APN/PA at this VAMC?  
1. Yes  
2. No  
95. Not applicable



**ARRVDATE** (Validation)  
Enter the **earliest** documented date the patient arrived at acute care at this VAMC.

**ARRVTIME** (Validation)  
Enter the **earliest** documented time the patient arrived at acute care at this VAMC.

**EDCDT** (Validation)  
Enter the date the patient departed from the emergency room.

**EDCTM** (Validation)  
Enter the time the patient departed from the emergency room.

**PRINCODE** (Global Measures)  
Enter the ICD-9-CM principal diagnosis code.

