

REVSTAT

REVIEW STATUS (not abstracted)

- 0. Abstraction has not begun
- 1. Abstraction in progress
- 2. Abstraction completed w/o errors
- 3. TVG failure (exclusion)
- 4. Record contains missing required answers (error record)
- 5. Administrative exclusion from all measures

CATNUM

Sample category (received on pull list)

- 65. No VTE sub-population
- 66. Principal VTE sub-population
- 67. Secondary VTE sub-population

AGE - calculated field

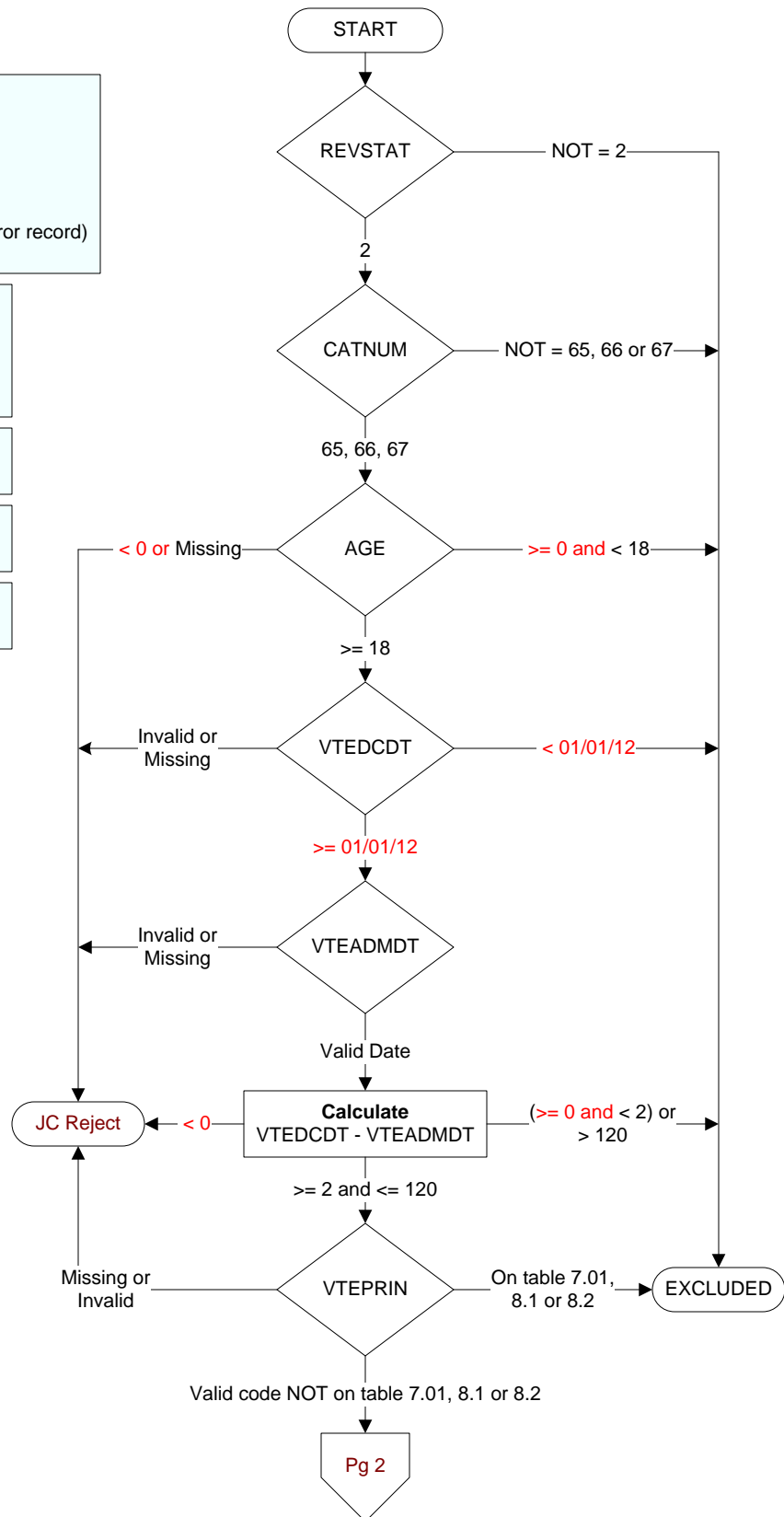
VTEADMDT - Patient date of birth

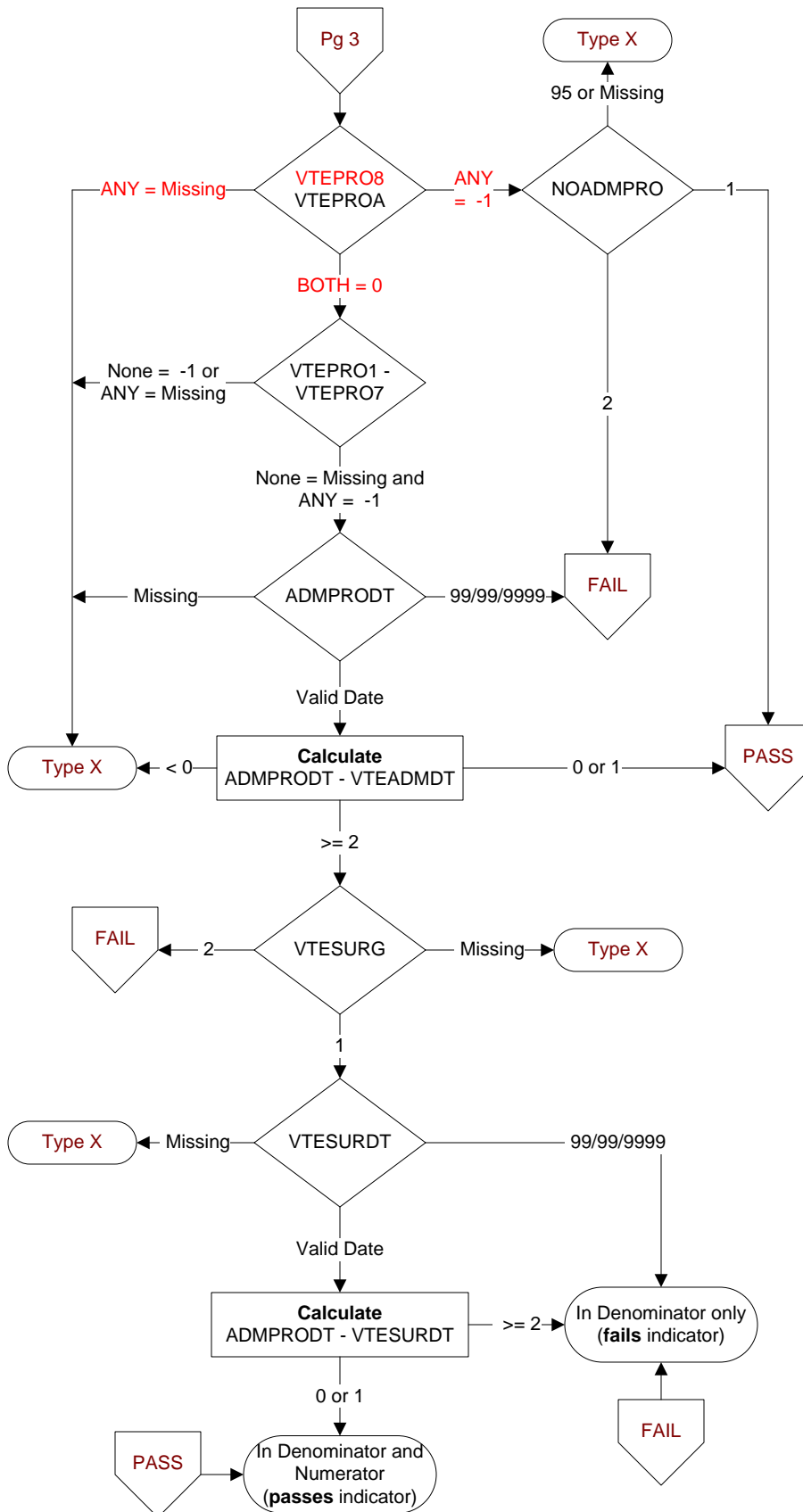
VTEDCDT (VTE)

Discharge Date

VTEADMDT (VTE)

Date of admission to acute inpatient care:





What type of initial VTE prophylaxis was administered during this hospitalization?

Indicate all that apply:

- VTEPRO1.** Low dose **unfractionated HEPARIN** (subcutaneous route only)
VTEPRO2. Low molecular weight heparin (such as **enoxaparin**)
VTEPRO3. Intermittent pneumatic compression devices (such as **SCDs**)
VTEPRO4. Graduated compression stockings (such as **TED hose**)
VTEPRO5. Parenteral Factor Xa Inhibitor (fondaparinux)
VTEPRO6. Warfarin
VTEPRO7. Venous foot pumps (VFP)
VTEPRO8. Oral Factor Xa Inhibitor (rivaroxaban)
VTEPROA None of the above or unable to determine from medical record documentation

-1 Yes

0 No

NOADMPRO (VTE)

Is there documentation of a reason VTE prophylaxis was not administered the day of or day after hospital admission (or day of surgery or day after surgery end date)?

1. Yes

2. No

95. Not applicable

ADMPRODT (VTE)

Enter the date the initial VTE prophylaxis was administered during this hospitalization.

VTESURG (VTE)

Was a surgical procedure performed using general or neuraxial anesthesia the day of or the day after hospital admission?

1. Yes

2. No

VTESURDT (VTE)

Enter the surgery end date.