

REVSTAT
REVIEW STATUS (not abstracted)
0. Abstraction has not begun
1. Abstraction in progress
2. Abstraction completed w/o errors
3. TVG failure (exclusion)
4. Record contains missing required answers (error record)
5. Administrative exclusion from all measures

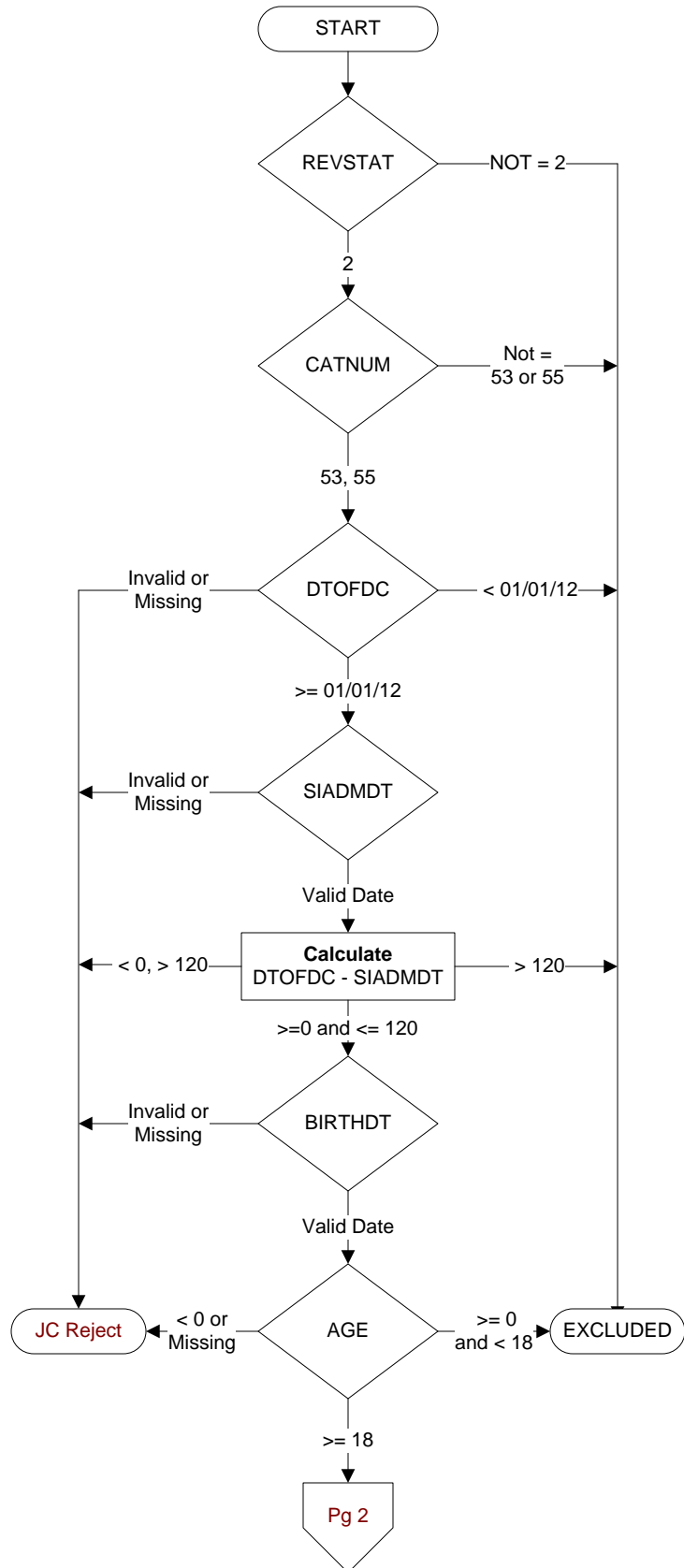
CATNUM
Sample category
53. Surgical Care
55. Type 10 Surgery Cases

SIADMDT (SCIP)
Date of admission to inpatient care:

BIRTHDT
Patient date of birth. Received on pull list.

DTOFDC (SCIP)
Discharge Date

AGE
Calculated field = SIADMDT - BIRTHDT



PRINPX (SCIP)
Enter the ICD-9-CM principal procedure code and date the procedure was performed

PRINCODE (SCIP)
Enter the ICD-9-CM principal diagnosis code:

PRINCODE (SCIP)
Enter the ICD-9-CM principal diagnosis code:

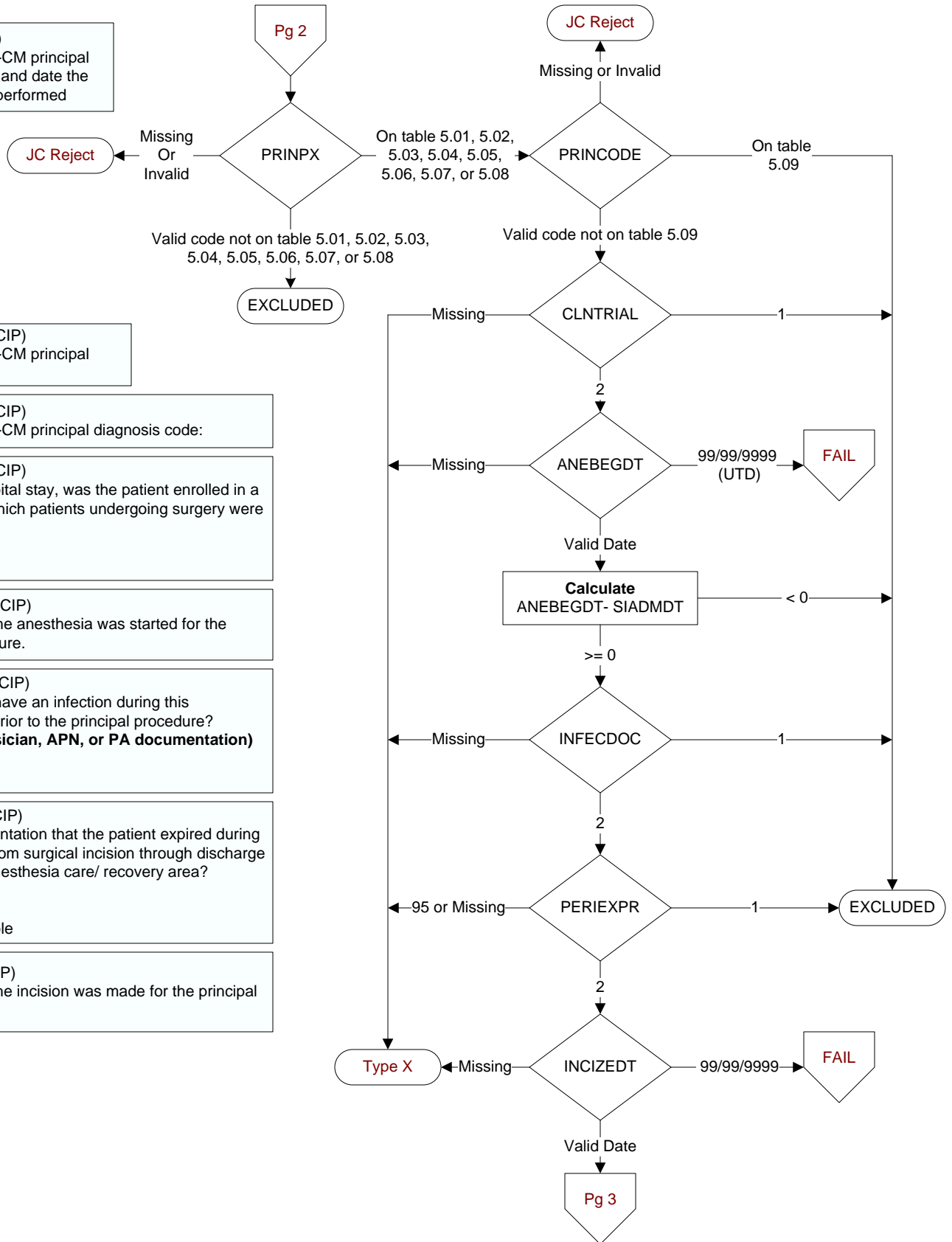
CLNTRIAL (SCIP)
During this hospital stay, was the patient enrolled in a clinical trial in which patients undergoing surgery were being studied?
1. Yes
2. No

ANEBEGDT (SCIP)
Enter the date the anesthesia was started for the principal procedure.

INFECDOC (SCIP)
Did the patient have an infection during this hospitalization prior to the principal procedure?
(Requires Physician, APN, or PA documentation)
1 = Yes
2 = No

PERIEXPR (SCIP)
Is there documentation that the patient expired during the timeframe from surgical incision through discharge from the post anesthesia care/ recovery area?
1. Yes
2. No
95. Not applicable

INCIZEDT (SCIP)
Enter the date the incision was made for the principal procedure.



Were there any other procedures requiring general or spinal/epidural anesthesia that occurred within 3 days (4 days for CABG or Other Cardiac Surgery) prior to or after the principal procedure during this hospital stay?

Indicate all that apply: (SCIP)

OTHSURG1. CABG

OTHSURG2. Other Cardiac surgery (not CABG)

OTHSURG3. Hip arthroplasty

OTHSURG4. Knee arthroplasty

OTHSURG5. Colon surgery

OTHSURG6. Hysterectomy

OTHSURG7. Vascular surgery

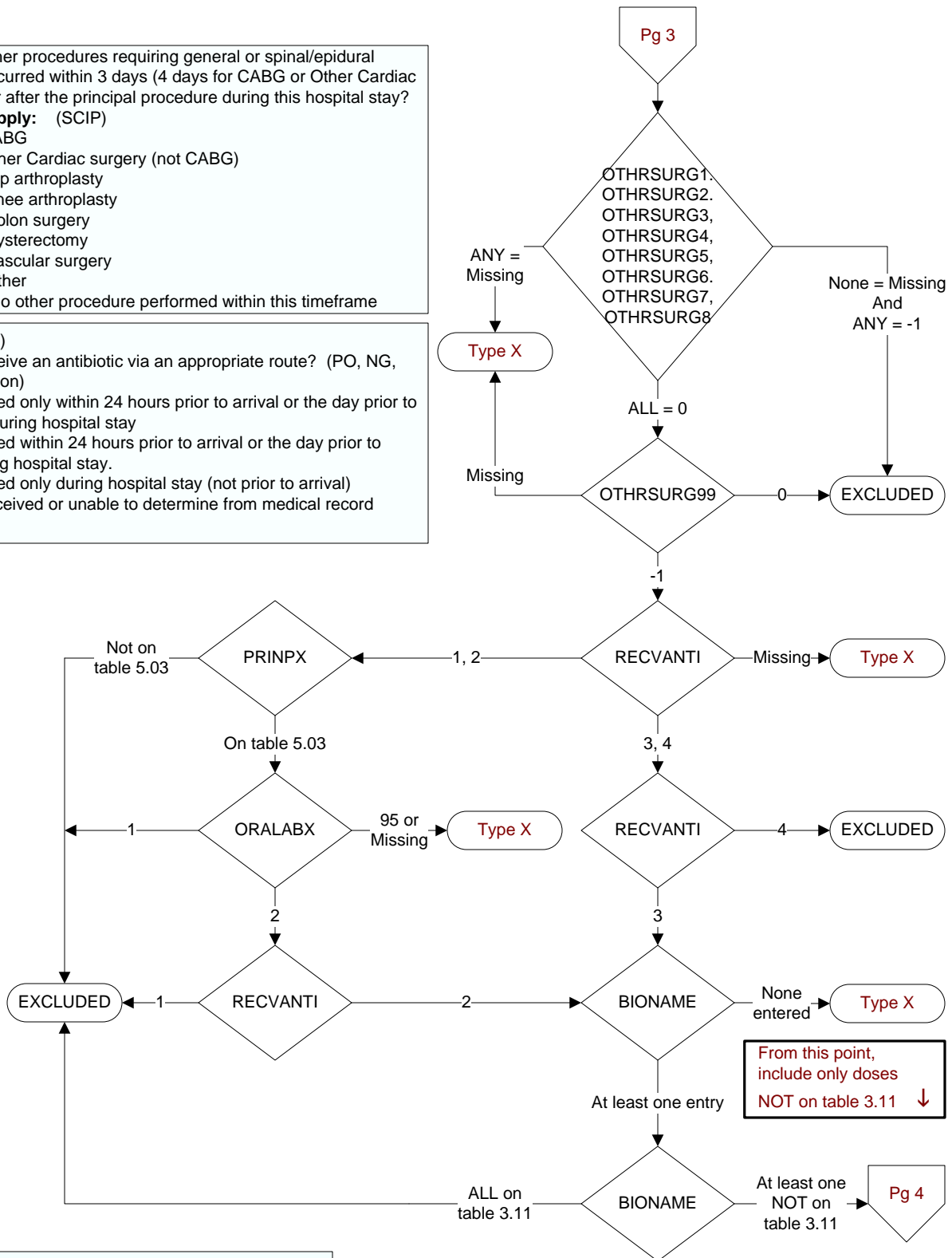
OTHSURG8. Other

OTHSURG99. No other procedure performed within this timeframe

RECVANTI (SCIP)

Did the patient receive an antibiotic via an appropriate route? (PO, NG, PEG, IV, or perfusion)

1. Antibiotic received only within 24 hours prior to arrival or the day prior to arrival and not during hospital stay
2. Antibiotic received within 24 hours prior to arrival or the day prior to arrival and during hospital stay.
3. Antibiotic received only during hospital stay (not prior to arrival)
4. Antibiotic not received or unable to determine from medical record documentation



ORALABX (SCIP)

Is there documentation that a combination of (oral Neomycin Sulfate + Erythromycin Base) OR (oral Neomycin Sulfate + Metronidazole) was administered the day prior to the day of surgery or within 24 hours prior to surgery?

1. Yes
2. No
95. Not applicable

BIONAME (SCIP)

Document the name of each antibiotic dose(s) administered from arrival through the first 48 hours after Anesthesia End Time (72 hours postop for CABG or Other Cardiac Surgery).

INCIZETM (SCIP)
Enter the time the initial incision was made for the principal procedure.
(Abstractor may enter 99:99 if UTD)

BIOTIME (SCIP)
Enter the time each antibiotic dose was administered from arrival through the first 48 hours after Anesthesia End Time (72 hours postop **for CABG or Other Cardiac Surgery**)

