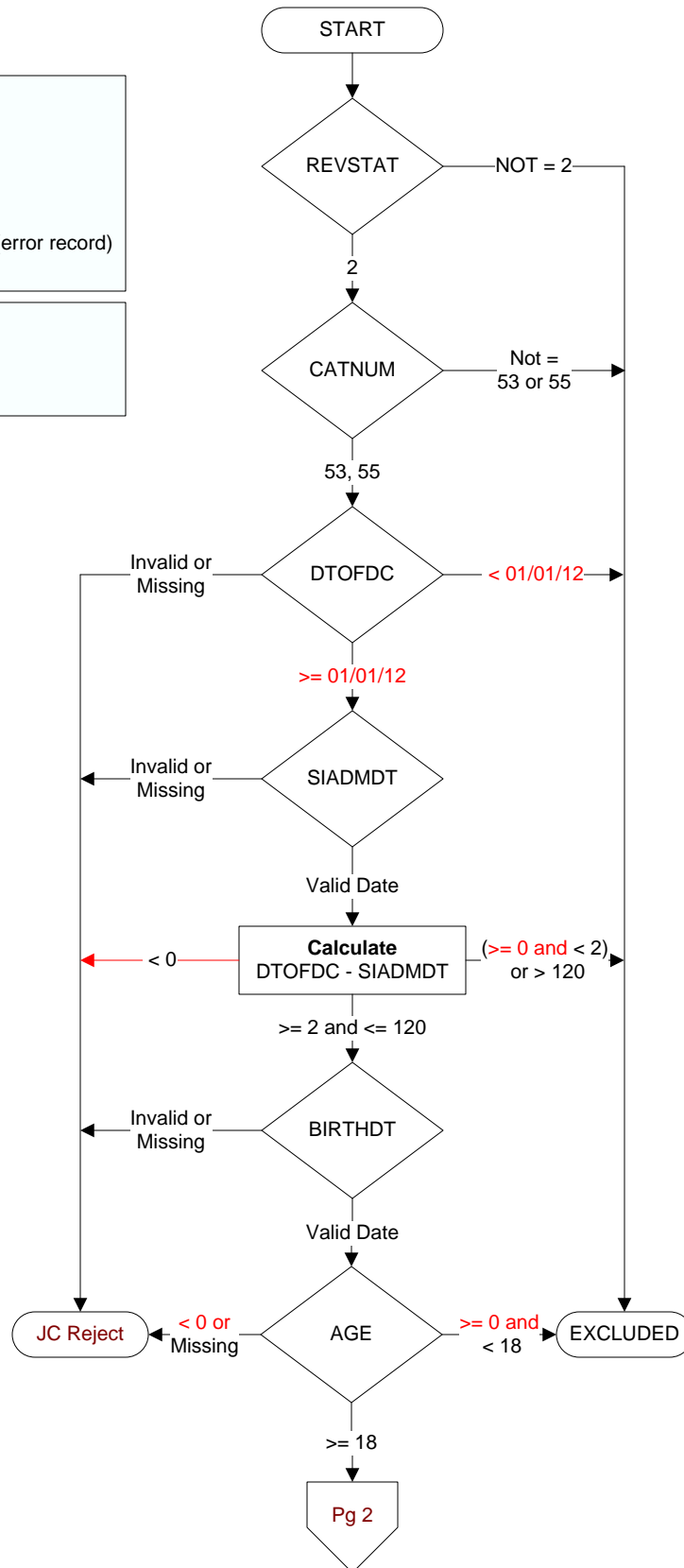


| |
|--|
| REVSTAT REVIEW STATUS (not abstracted) 0. Abstraction has not begun 1. Abstraction in progress 2. Abstraction completed w/o errors 3. TVG failure (exclusion) 4. Record contains missing required answers (error record) 5. Administrative exclusion from all measures |
| CATNUM Sample category 53. Surgical Care 55. Type 10 Surgery Cases |
| SIADMDT (SCIP) Date of admission to inpatient care: |
| BIRTHDT Patient date of birth. Received on pull list. |
| DTOFDC (SCIP) Discharge Date |
| AGE Calculated field = SIADMDT - BIRTHDT |



PRINPX (SCIP)

Enter the ICD-9-CM principal procedure code and date the procedure was performed (date is stored in PRINPXDT)

PRINCODE (SCIP)

Enter the ICD-9-CM principal diagnosis code:

CLNTRIAL (SCIP)

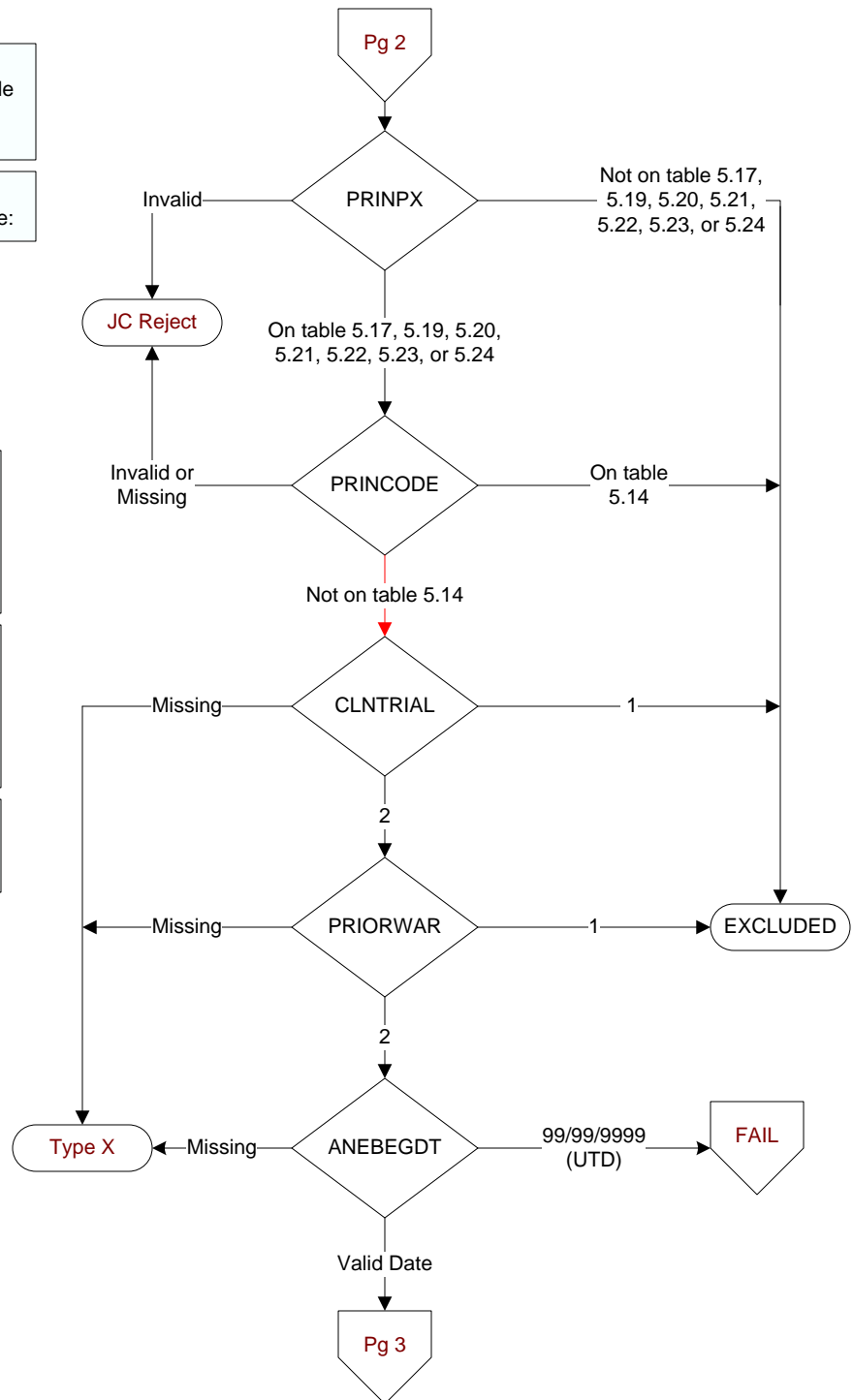
During this hospital stay, was the patient enrolled in a clinical trial in which patients undergoing surgery were being studied?
1. Yes
2. No

PRIORWAR (SCIP)

Was there documentation that the patient was on continuous warfarin prior to admission?
1. Yes
2. No

ANEBEGDT (SCIP)

Enter the date the anesthesia was started for the principal procedure.



PERIEXPR (SCIP)
Is there documentation that the patient expired during the timeframe from surgical incision through discharge from the post anesthesia care/ recovery area?
1. Yes
2. No
95. Not applicable

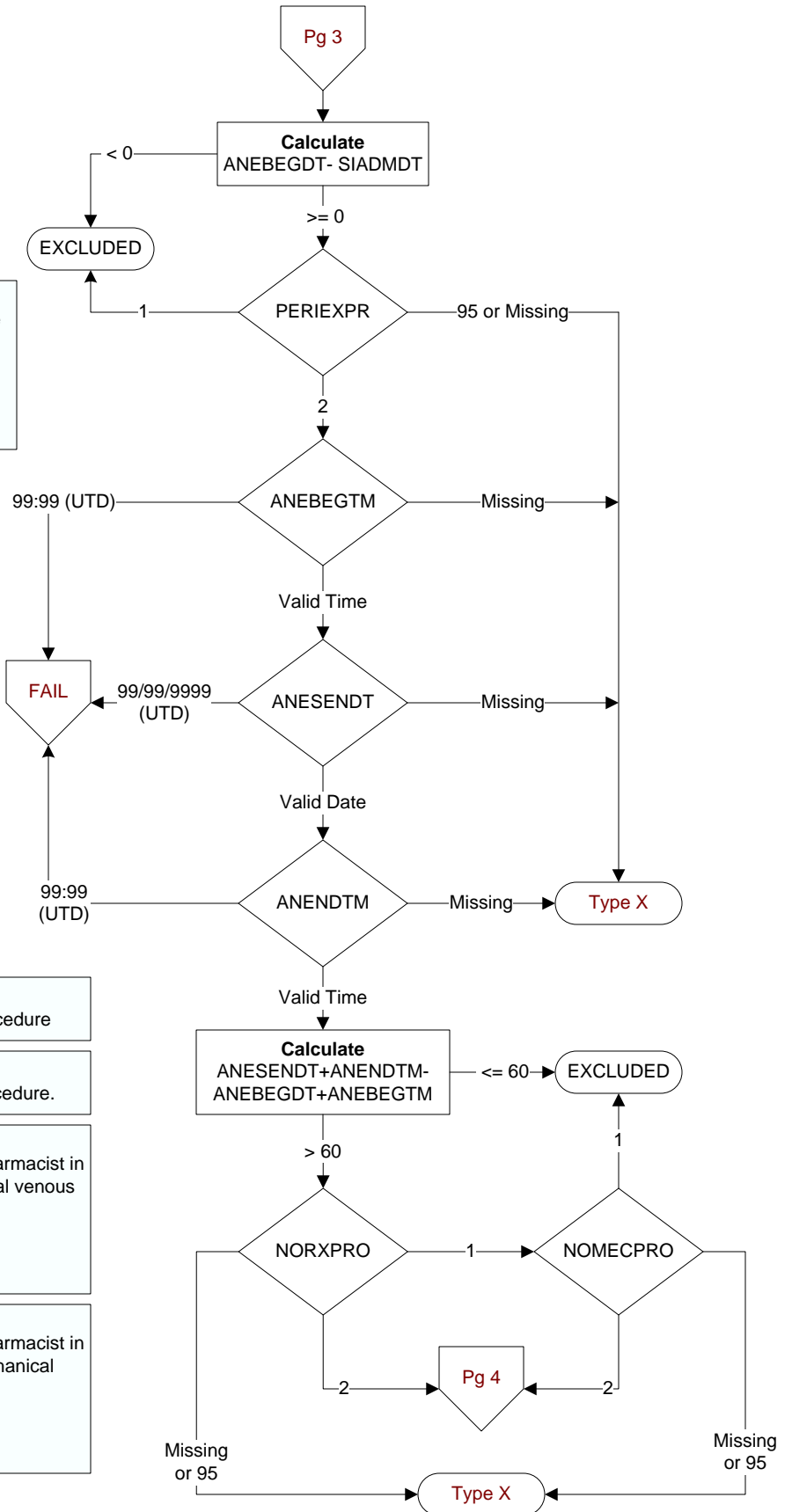
ANEBEGTM (SCIP)
Enter the time the anesthesia was initiated for the principal procedure.

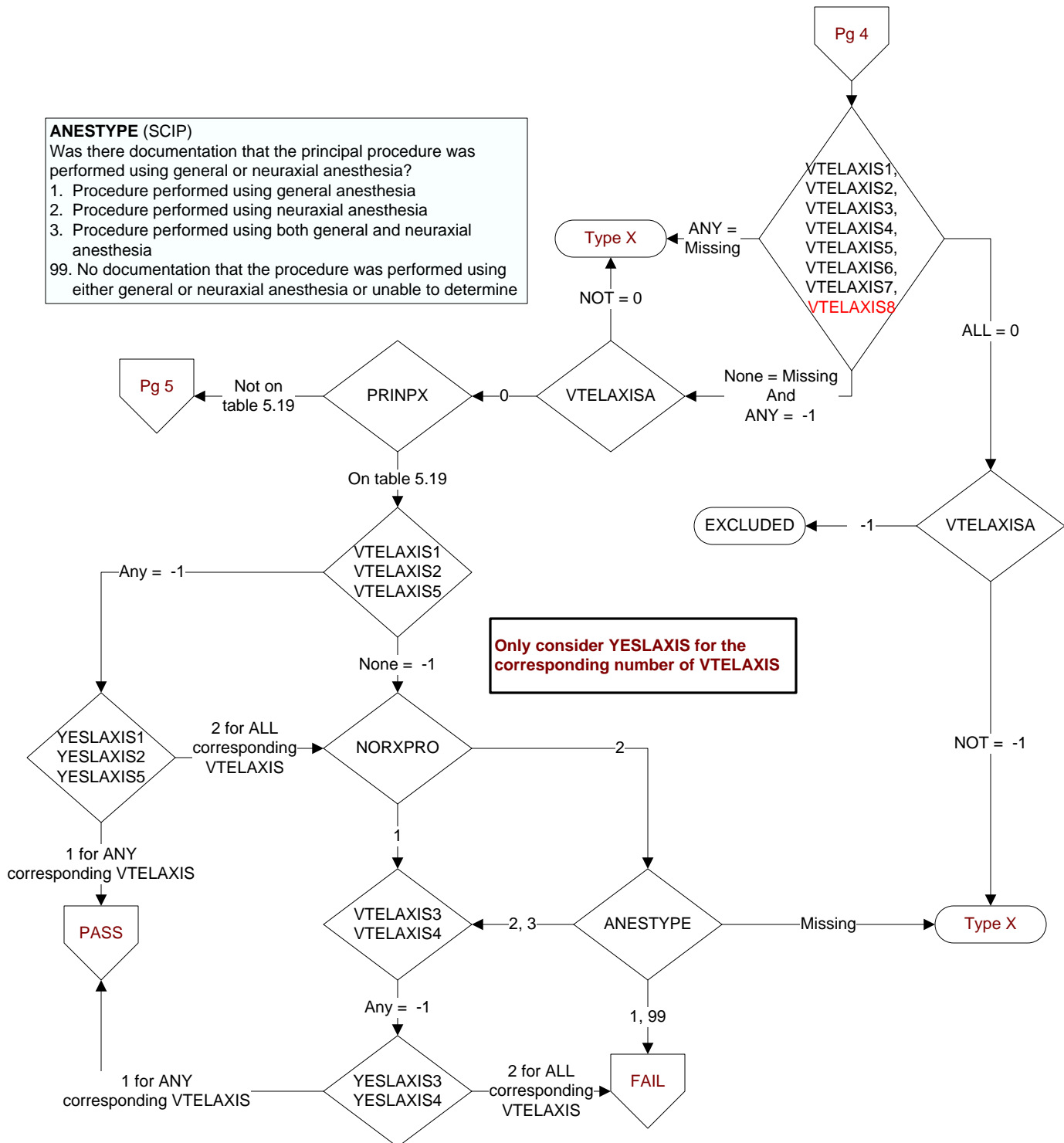
ANESENDT (SCIP)
Enter the date the anesthesia ended for the principal procedure

ANENDTM (SCIP)
Enter the time the anesthesia ended for the principal procedure.

NORXPRO (SCIP)
Is there documentation by the physician, APN, PA, or pharmacist in the medical record of contraindications to pharmacological venous thromboembolism (VTE) prophylaxis?
1. Yes
2. No
95. Not applicable

NOMECPRO (SCIP)
Is there documentation by the physician, APN, PA, or pharmacist in the medical record of a reason for not administering mechanical venous thromboembolism (VTE) prophylaxis?
1. Yes
2. No
95. Not applicable





What venous thromboembolism (VTE) prophylaxis was ordered anytime from hospital arrival to 24 hours after Anesthesia End Time? (SCIP)

VTELAXIS1. Low dose unfractionated heparin (LDUH) - Subcutaneous route only

VTELAXIS2. Low molecular weight heparin (LDMH)

VTELAXIS3. Intermittent pneumatic compression devices (IPC)

VTELAXIS4. Graduated compression stockings (GCS)

VTELAXIS5. Parenteral Factor Xa Inhibitor (such as fondaparinux)

VTELAXIS6. Warfarin

VTELAXIS7. Venous foot pumps (VFP)

VTELAXIS8. ORAL factor Xa Inhibitor (such as rivaroxaban)

VTELAXISA. None of the above

Was there documentation that the ordered VTE prophylaxis was received within 24 hours prior to Anesthesia Start Time to 24 hours after Anesthesia End Time?

YESLAXIS1. 1 = Yes; 2 = No

YESLAXIS2. 1 = Yes; 2 = No

YESLAXIS3. 1 = Yes; 2 = No

YESLAXIS4. 1 = Yes; 2 = No

YESLAXIS5. 1 = Yes; 2 = No

YESLAXIS6. 1 = Yes; 2 = No

YESLAXIS7. 1 = Yes; 2 = No

YESLAXIS8. 1 = Yes; 2 = No

