

**Document Links:**

[Global Measures Instrument](#)

**COHORT** (rcvd on pull list)  
70 = Global Measures

**REVSTAT**  
REVIEW STATUS (calculated)  
0. Abstraction has not begun  
2. Abstraction completed w/o errors  
3. TVG failure (exclusion)  
4. Record contains missing data  
5. Administrative Exclusion

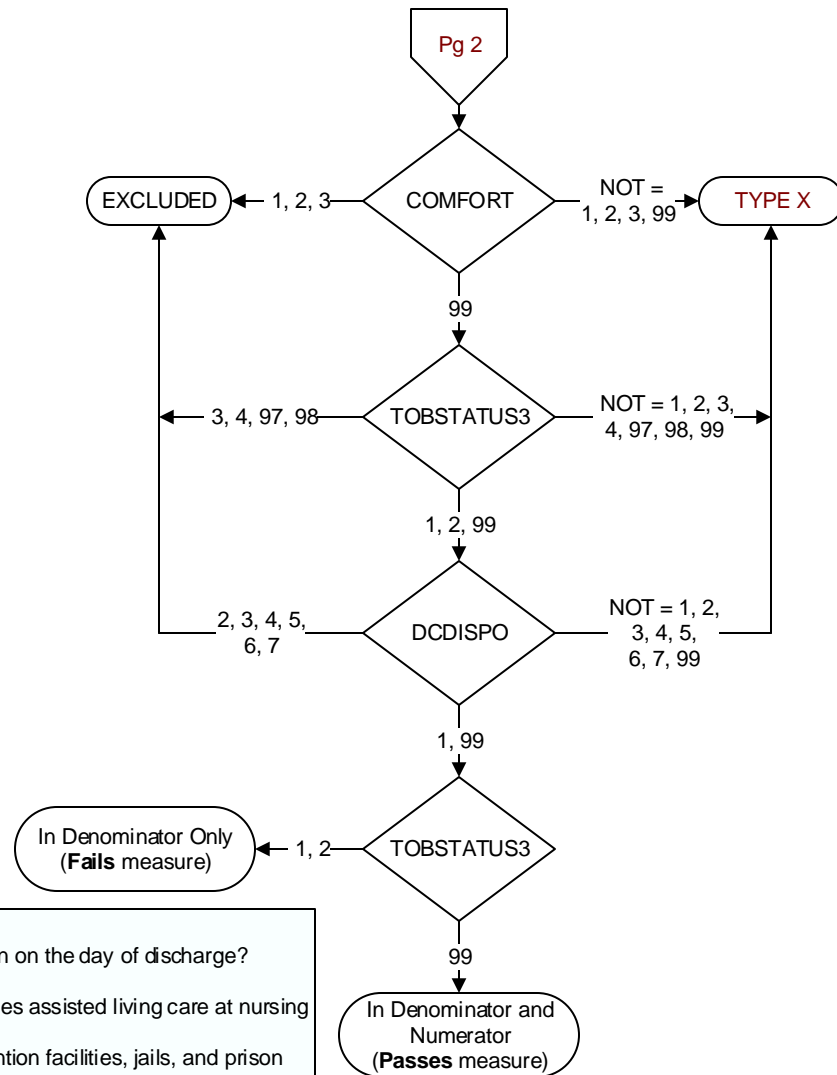
**DCDT** (Global Measures)  
Discharge date (rcvd on pull list and may not be modified)

**ADMDT** (Global Measures)  
Admission date:

**BIRTHDT** (Global Measures)  
Patient date of birth

**AGE** (Calculated)  
ADMDT - BIRTHDT

**MDE = Missing or Invalid Data Exclusion (data error)**

**DCDISPO** (Global Measures)

What was the patient's discharge disposition on the day of discharge?

1. Home
  - Assisted Living Facilities (ALFs) – includes assisted living care at nursing home/facility
  - Court/Law Enforcement – includes detention facilities, jails, and prison
  - Home – includes board and care, domiciliary, foster or residential care, group or personal care homes, retirement communities, and homeless shelters
  - Home with Home Health Services
  - Outpatient Services including outpatient procedures at another hospital, outpatient Chemical Dependency Programs and Partial Hospitalization
2. Hospice – Home (or other home setting as listed in #1 above)
3. Hospice – Health Care Facility
  - General Inpatient and Respite, Residential and Skilled Facilities, and Other Health Care Facilities
4. Acute Care Facility
  - Acute Short Term General and Critical Access Hospitals
  - Cancer and Children's Hospitals
  - Department of Defense and Veteran's Administration Hospitals
5. Other Health Care Facility
  - Extended or Immediate Care Facility (ECF/ICF)
  - Long Term Acute Care Hospital (LTACH)
  - Nursing Home or Facility including Veteran's Administration Nursing Facility
  - Psychiatric Hospital or Psychiatric Unit of a Hospital
  - Rehabilitation Facility including, but not limited to: Inpatient Rehabilitation Facility/Hospital, Rehabilitation Unit of a Hospital, Chemical Dependency/Alcohol Rehabilitation Facility
  - Skilled Nursing Facility (SNF), Sub-Acute Care or Swing Bed
  - Transitional Care Unit (TCU)
  - Veteran's Home
6. Expired
7. Left Against Medical Advice/AMA
99. Not documented or unable to determine

**COMFORT** (Global Measures)

When is the earliest physician, APN, or PA documentation of comfort measures only?

1. Day of arrival (day 0) or day after arrival (day 1)
2. Two or more days after arrival (day 2 or greater)
3. Comfort measures only documented during hospital stay, but timing unclear
99. Comfort measures only was not documented by the physician/ APN/PA or unable to determine

**TOBSTATUS3** (Global Measures)

What is the patient's tobacco use status documented within the first day of admission (by the end of Day1)?

1. Current everyday tobacco user
2. Current some day tobacco user
3. Former tobacco user
4. Never tobacco user
97. The patient was not screened for tobacco use within the first day of admission (by end of Day 1) because of cognitive impairment
98. The patient refused the tobacco use screen
99. Tobacco use status unknown