

Document Links:[CGPI Validation Module](#)[CGPI PI Module](#)**COHORT**

16. AMI - Outpatient visit
 48. Female, age 20-69
 50. Random Sample
 51. Random Sample MH
 54. Frail/Elderly
 60. DM Outpatient

REVSTAT

REVIEW STATUS (not abstracted)
 0. Abstraction has not begun
 1. Abstraction in progress
 2. Abstraction completed w/o errors
 3. Cohort validation failure (exclusion)
 4. Record contains missing data
 5. Administrative exclusion

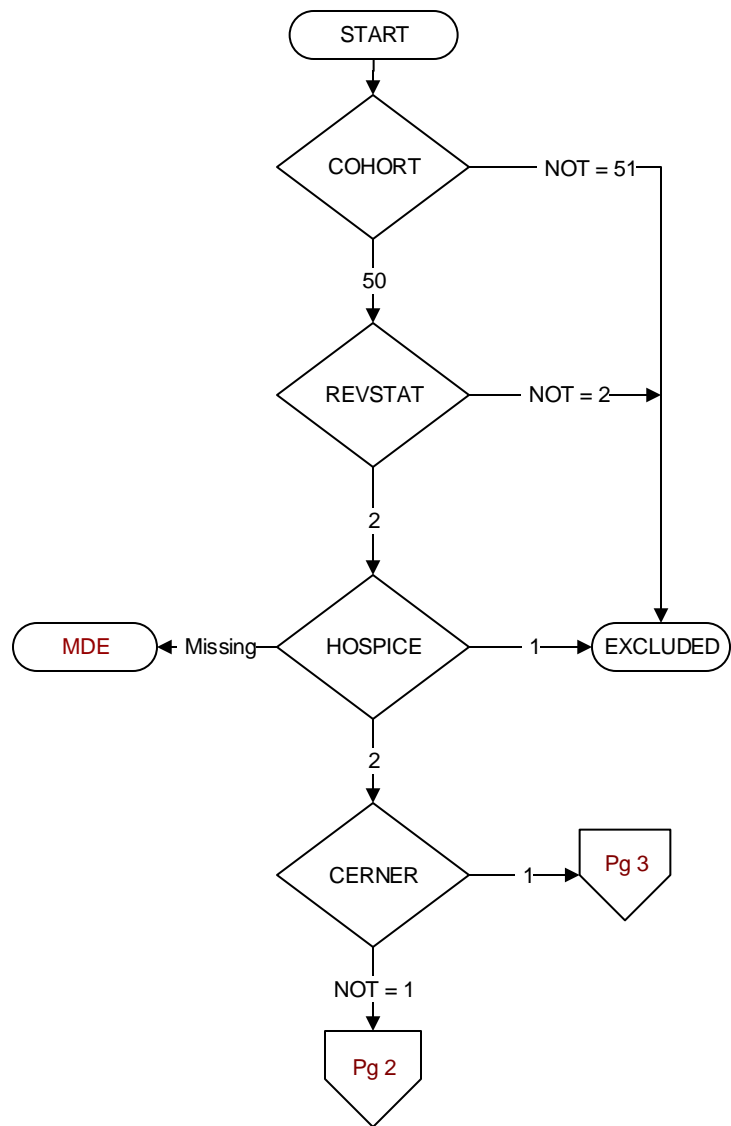
HOSPICE (Validation)

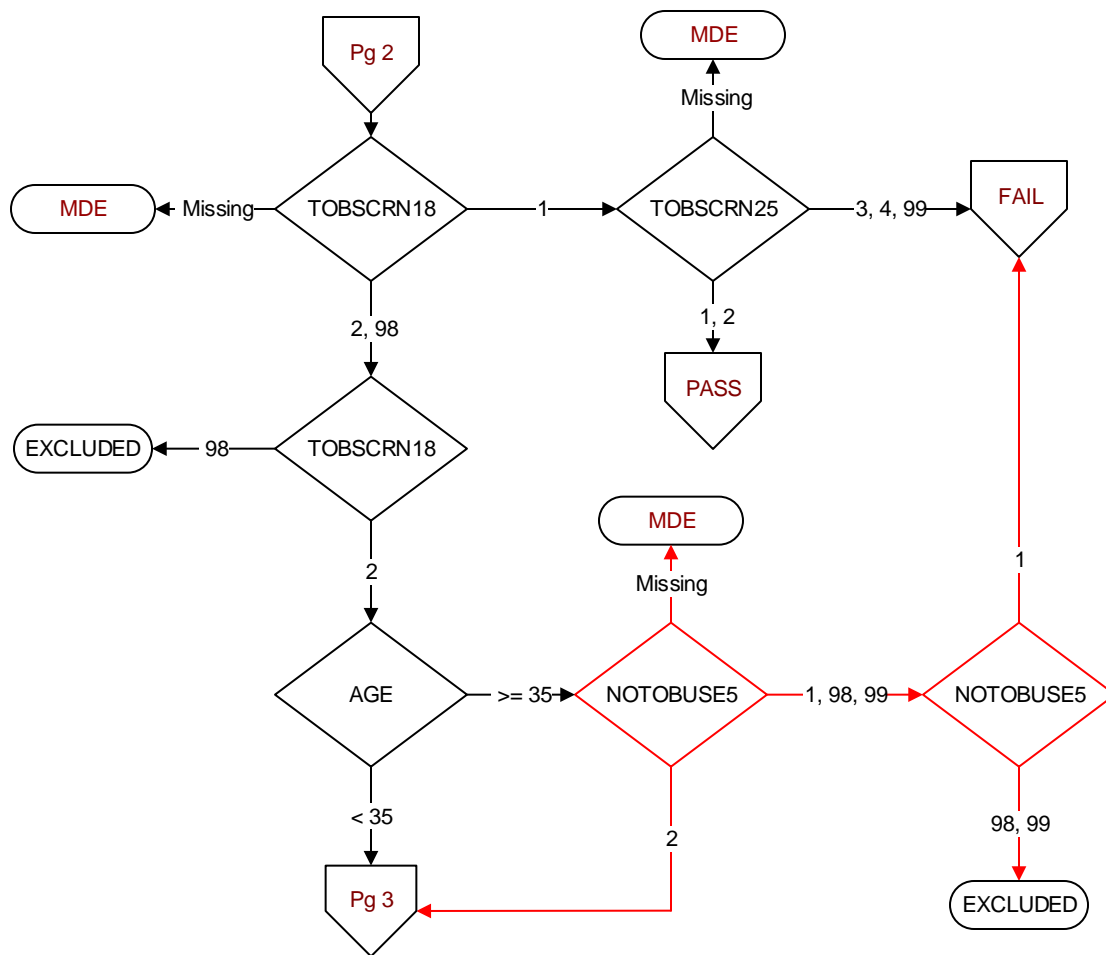
During the past year is there documentation in the medical record the patient is enrolled in a VHA or community-based hospice program?
 1. Yes
 2. No

CERNER (system flag)

Flag indicating facility is using the Cerner eHR
 1 = flagged
 0 = not flagged

**MDE = Missing or
 Invalid Data Exclusion
 (data error)**



**TOBSCRN18 (PI)**

During the past year, was the patient screened for tobacco use by clinical staff using the **National Clinical Reminder for Tobacco Use?**

- 1. Yes
- 2. No
- 98. Patient declined to answer National Clinical Reminder for Tobacco Use screening questions

TOBSCRN25 (PI)

Enter the response to the Tobacco Use Screening question "Do you smoke cigarettes or use other types of tobacco (cigars, pipe smoking, snuff, dip, or chewing tobacco)?"

- 1. Yes, Every Day
- 2. Yes, Some Days
- 3. Formerly
- 4. Never
- 99. None of the above

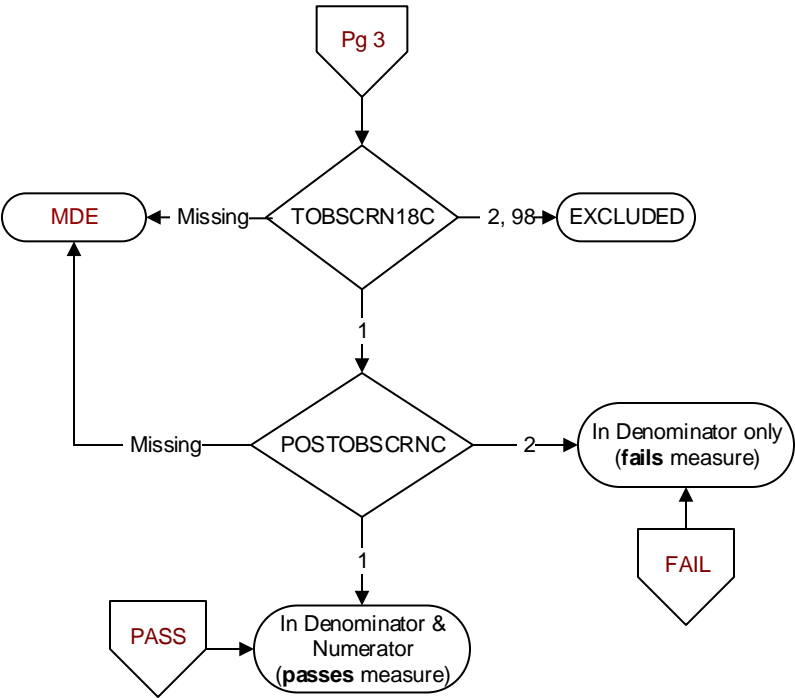
AGE (Calculated field)

NEXUS clinic visit date – BIRTHDT

NOTOBUSE5 (PI module)

During the time frame from (computer to display stdybeg – 5 years to stdyend – 1 year), does the Tobacco Use Screening documentation indicate on at least three separate occasions the patient has never smoked cigarettes or used other types of tobacco (cigars, pipe smoking, snuff, dip, or chewing tobacco)?

- 1. Yes
- 2. No
- 98. Patient declined to answer National Clinical Reminder for Tobacco Use Screening questions
- 99. Tobacco Use Screening not documented during specified time frame



TOBSCRN18C (PI)
During the past year, was the patient screened for or asked about tobacco use by an acceptable provider at a VHA facility that uses the Oracle Health electronic health record?
1. Yes
2. No
98. Patient declined to answer screening questions

POSTOBSRNC (PI)
Was the tobacco screening done on (computer to display tobscmdtc) positive for tobacco use?
1. Yes
2. No