

Document Links:

[Sepsis Instrument](#)

REVSTAT

REVIEW STATUS (not abstracted)
0. Abstraction has not begun
1. Abstraction in progress
2. Abstraction completed w/o errors
3. TVG failure (exclusion)
4. Record contains missing data or errors
5. Administrative exclusion from all measures

AGE

Calculated field – ADMDT - BIRTHDT

DCDT

Discharge date

ADMDT

Admission date

TRNSFR

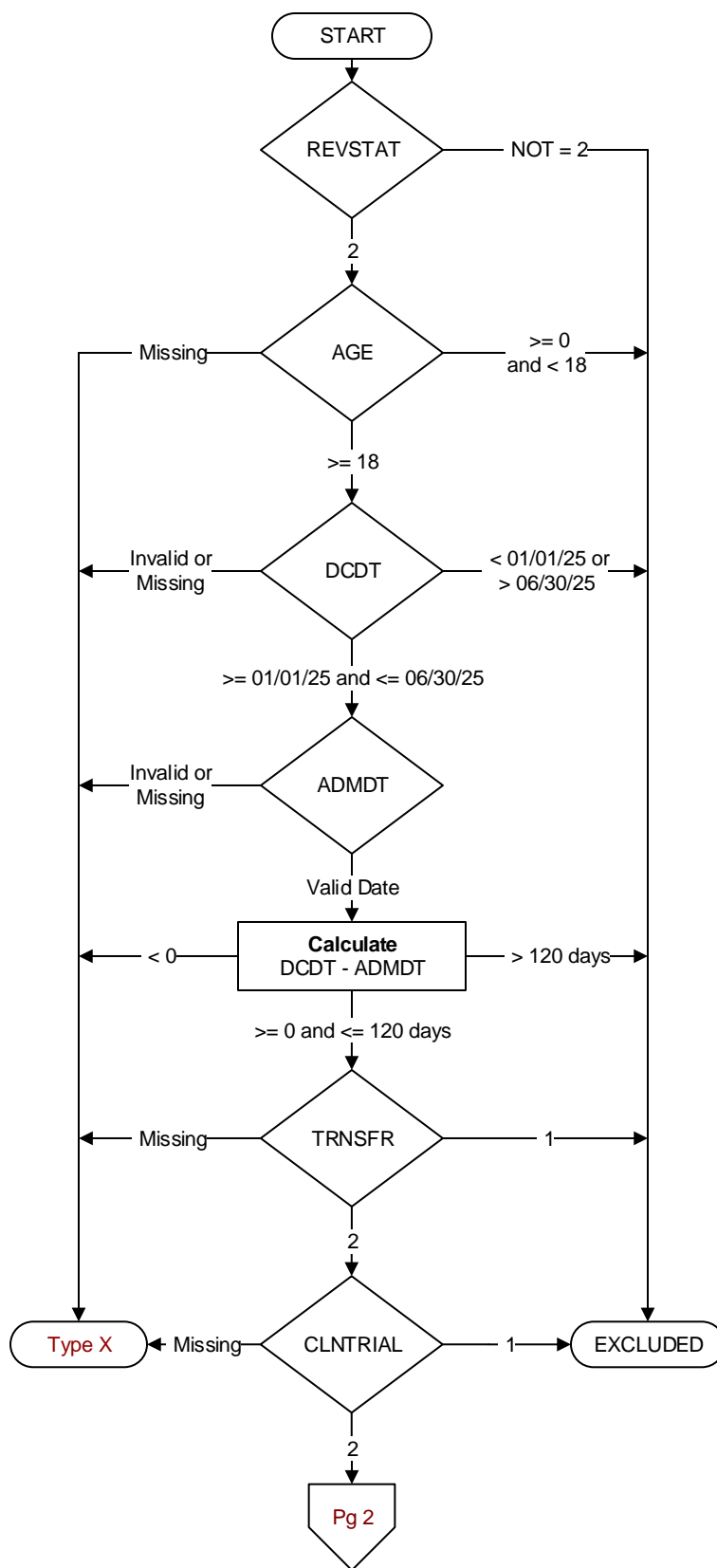
Is there documentation the patient was received as a transfer from an inpatient, outpatient or emergency/observation department of an outside hospital or from an ambulatory surgery center?

1. Yes
2. No

CLNTRIAL

During this hospital stay, was the patient enrolled in a clinical trial in which patients with sepsis/septic shock were being studied?

1. Yes
2. No

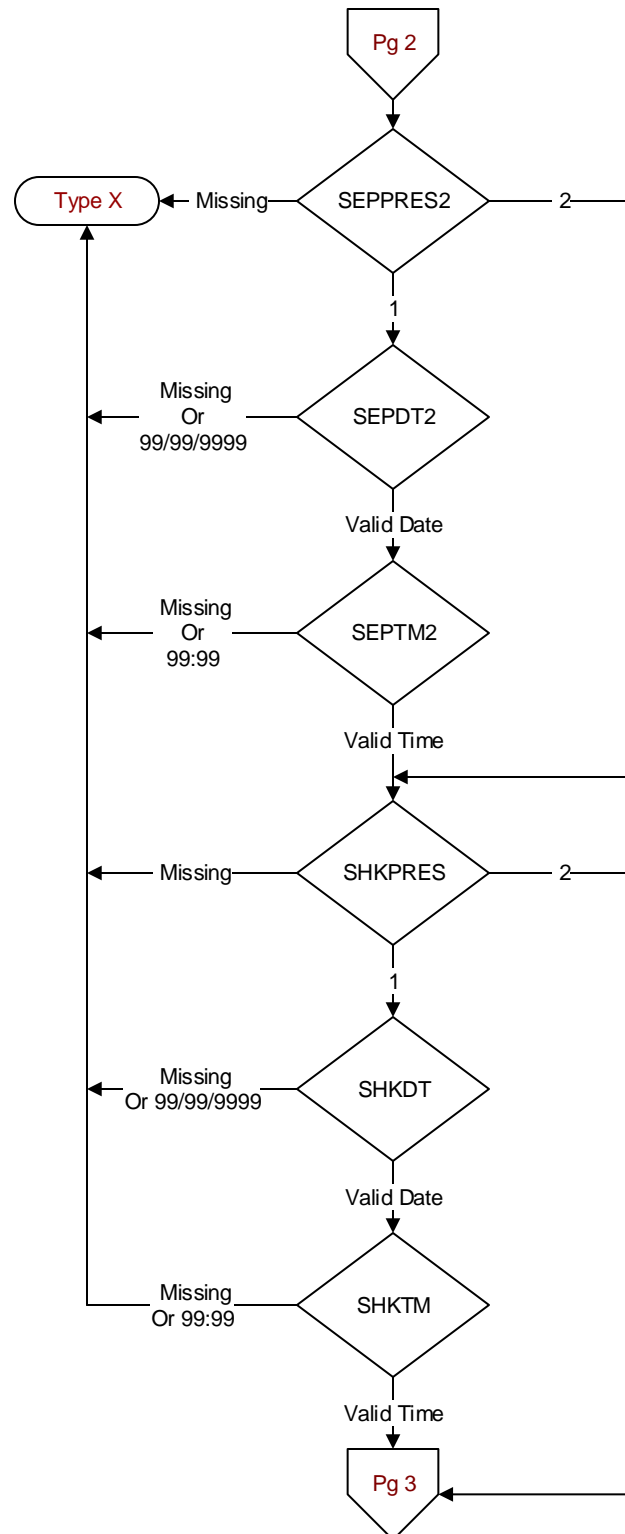


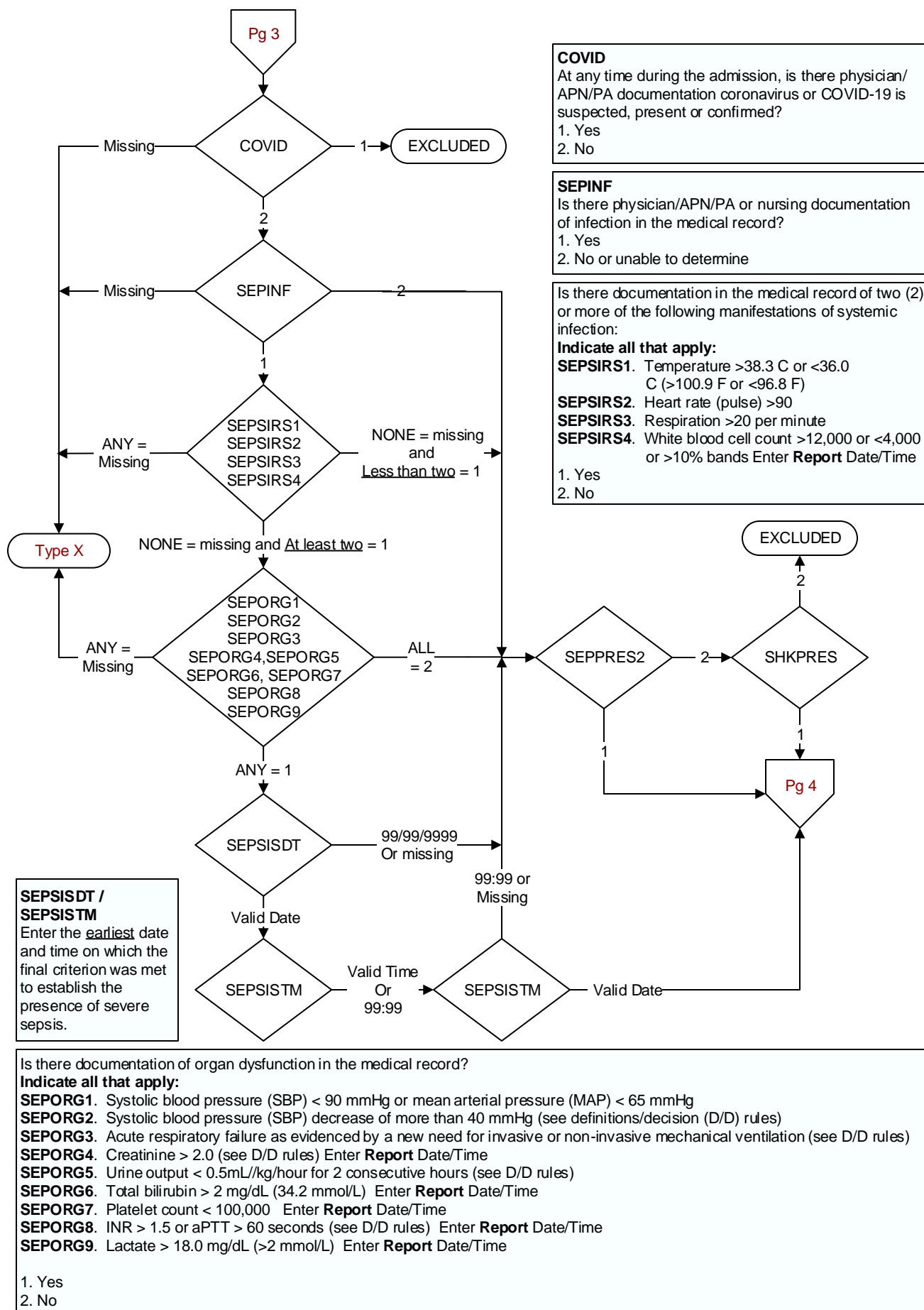
SEPPRES2
Did a physician/APN/PA document presence of severe sepsis?
1. Yes
2. No

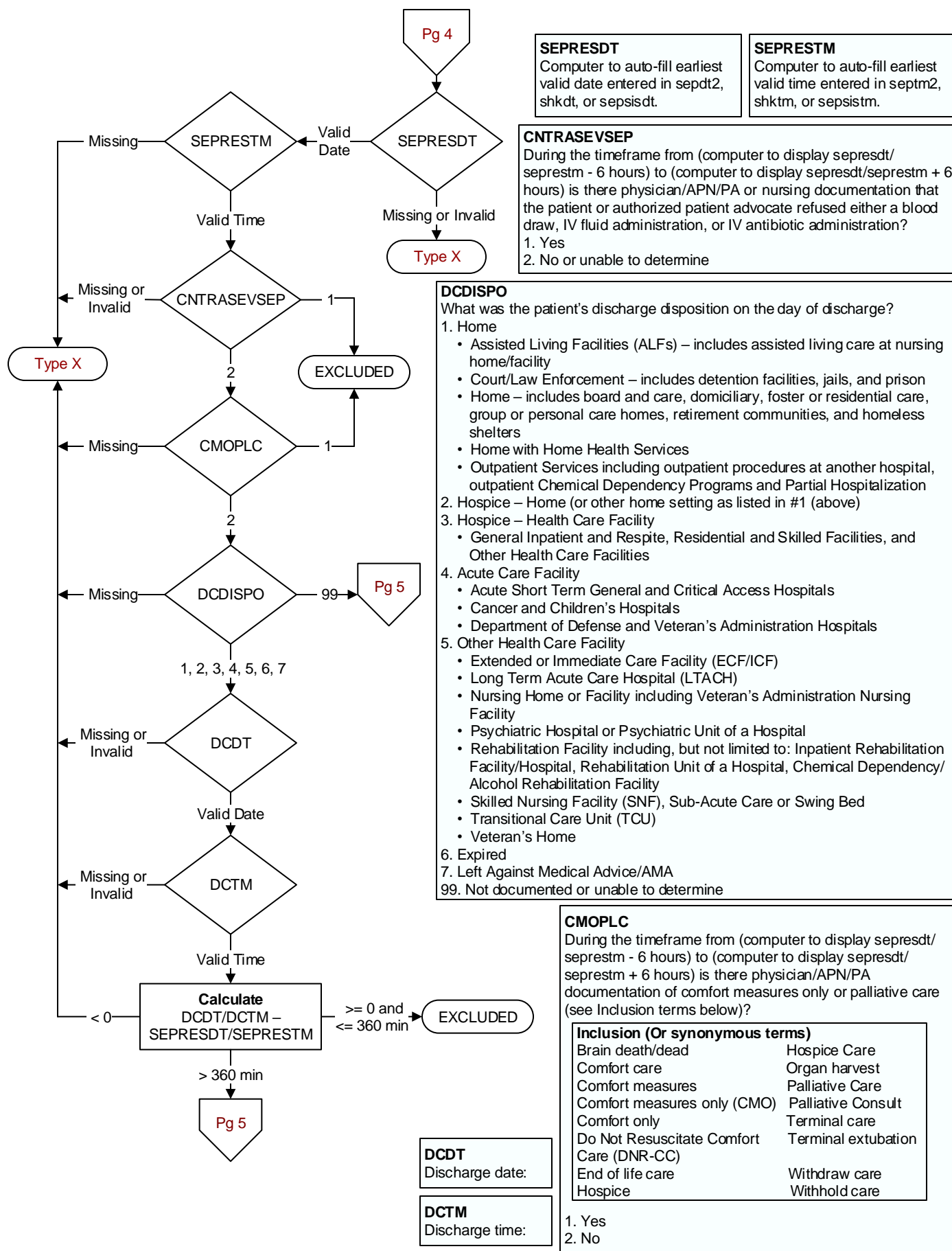
SEPDT2 / SEPTM2
Enter the earliest date and time a physician/APN/PA documented the presence of severe sepsis

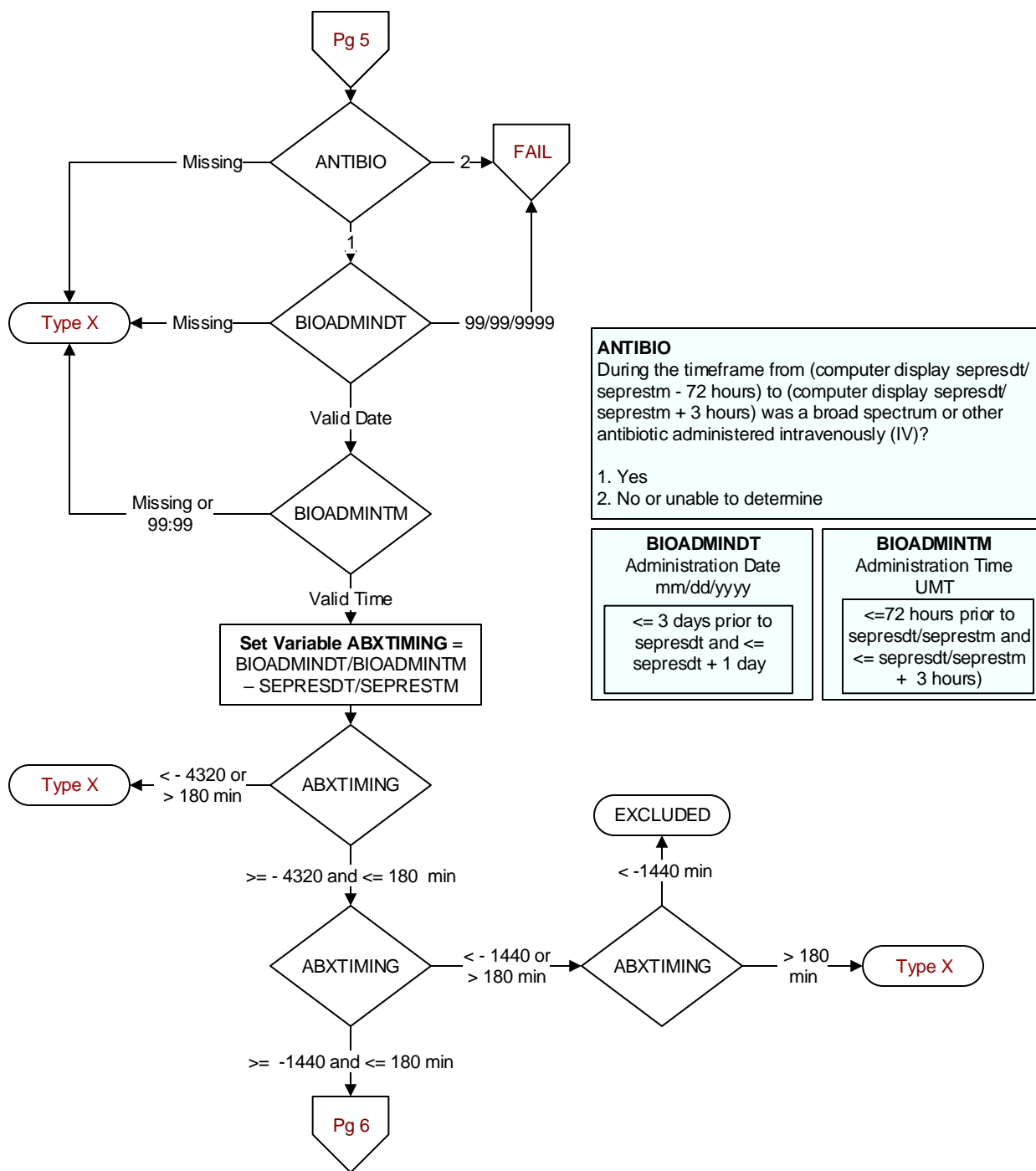
SHKPRES
Is documentation of septic shock present in the record?
1. Yes
2. No, or unable to determine

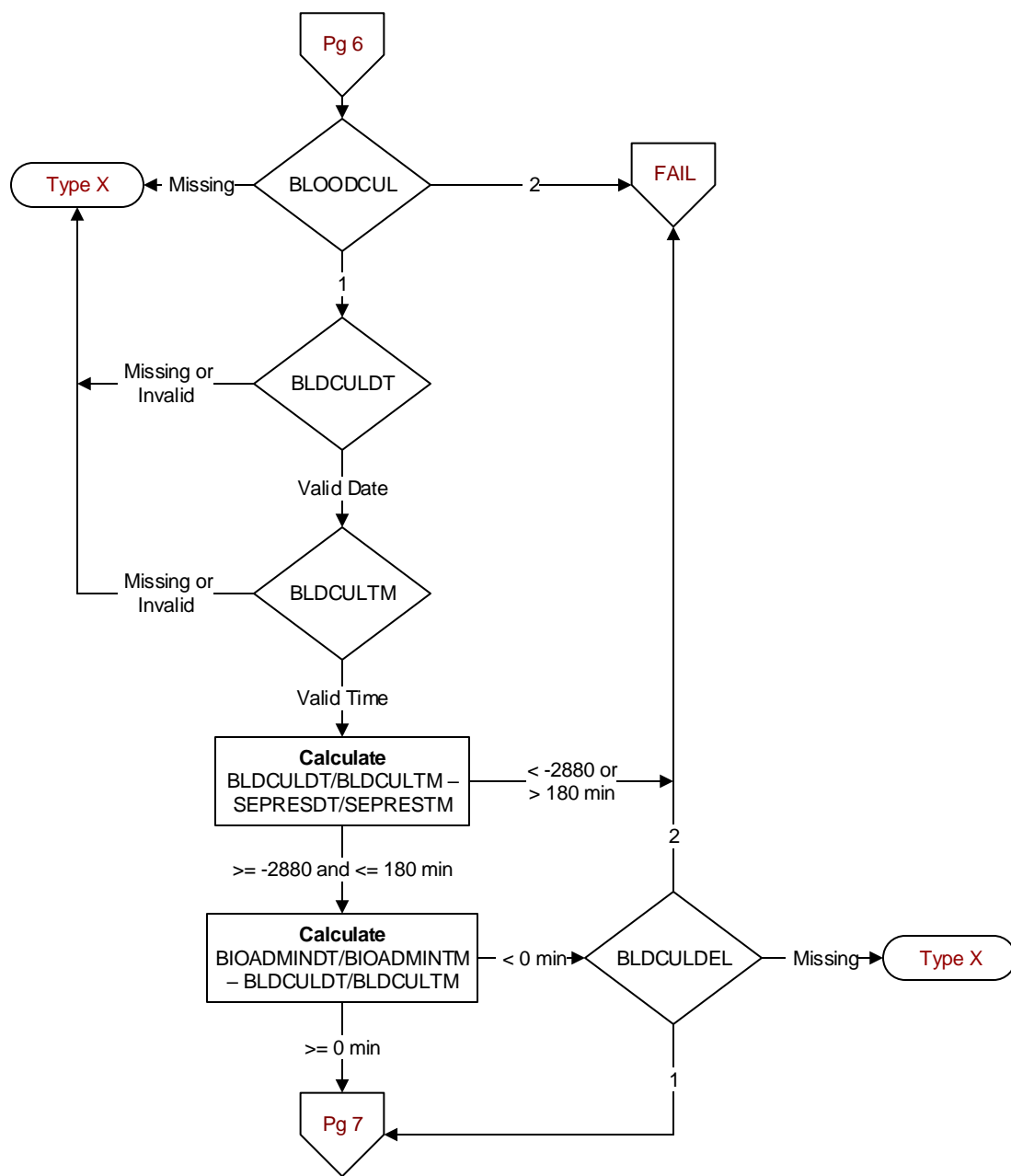
SHKDT / SHKTM
Enter the earliest date and time a physician/APN/PA of the documented the presence of septic shock.









**BLOODCUL**

During the time frame from [(If bioadmintm/ bioadmintm - sepresdt/seprestm >= -1440 and < 0, computer to display sepresdt/ seprestm - 48 hours to sepresdt/seprestm + 3 hours); else computer to display (earliest bioadmintm/ bioadmintm- 24 hours to sepresdt/ seprestm + 3 hours)], was a blood culture collected?

1. Yes
2. No or unable to determine

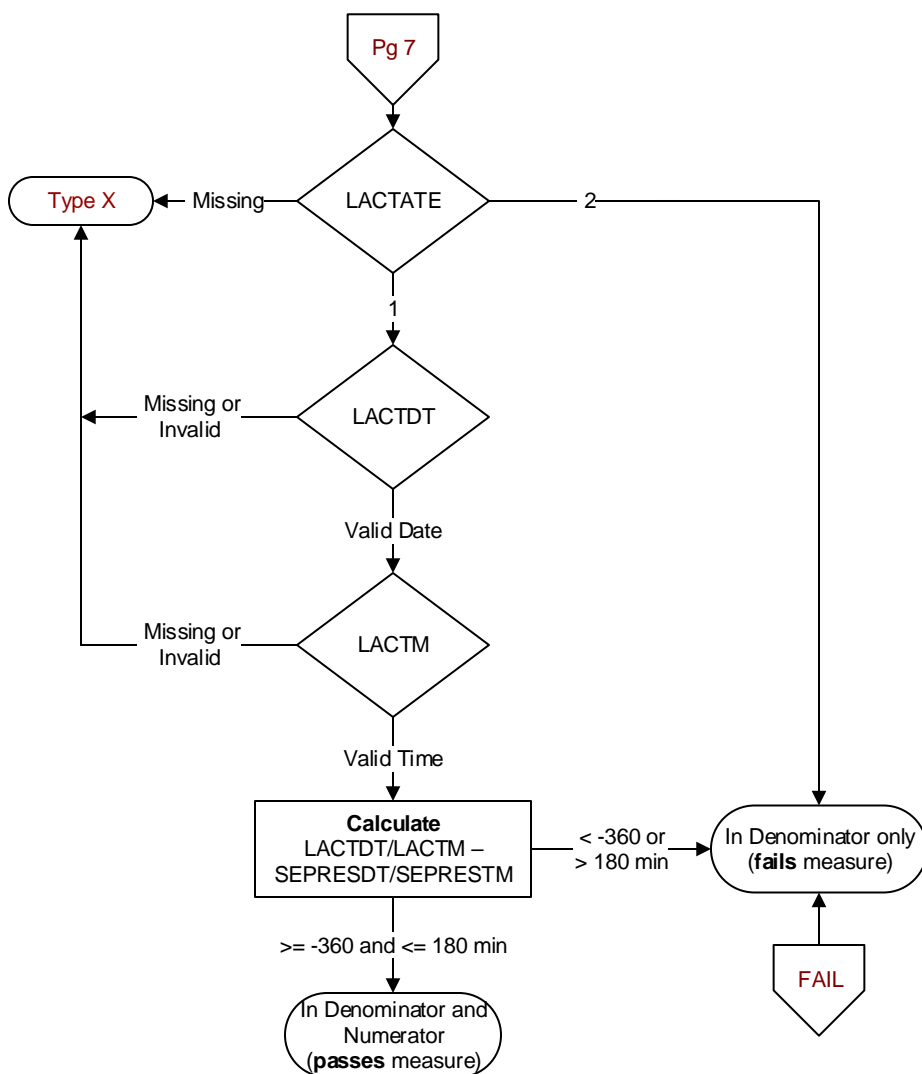
BLDCULDT / BLDCULTM

During the specified timeframe, enter the date and time the blood culture was collected.

BLDCULDEL

Is there documentation supporting an acceptable delay in collecting a blood culture?

1. Yes
2. No or unable to determine

**LACTATE**

During the timeframe from (computer display sepresdt/seprestm - 6 hours to sepresdt/seprestm + 3 hours) was an initial lactate level drawn (or collected)?

1. Yes
2. No

LACTDT / LACTM

Enter the date and time during the timeframe from (computer display sepresdt/seprestm - 6 hours to sepresdt/seprestm + 3 hours) when the initial lactate level was drawn (or collected).

- If multiple lactate levels are drawn within the specified time frame, use the highest lactate level drawn from the Severe Sepsis Presentation Time to six hours before. Use a lactate level drawn at the same time as the Severe Sepsis Presentation Time if it has the highest level.
- If multiple lactate levels are drawn ONLY in the three hours after the Severe Sepsis Presentation Time, use the lactate drawn with the HIGHEST level within this time frame.