

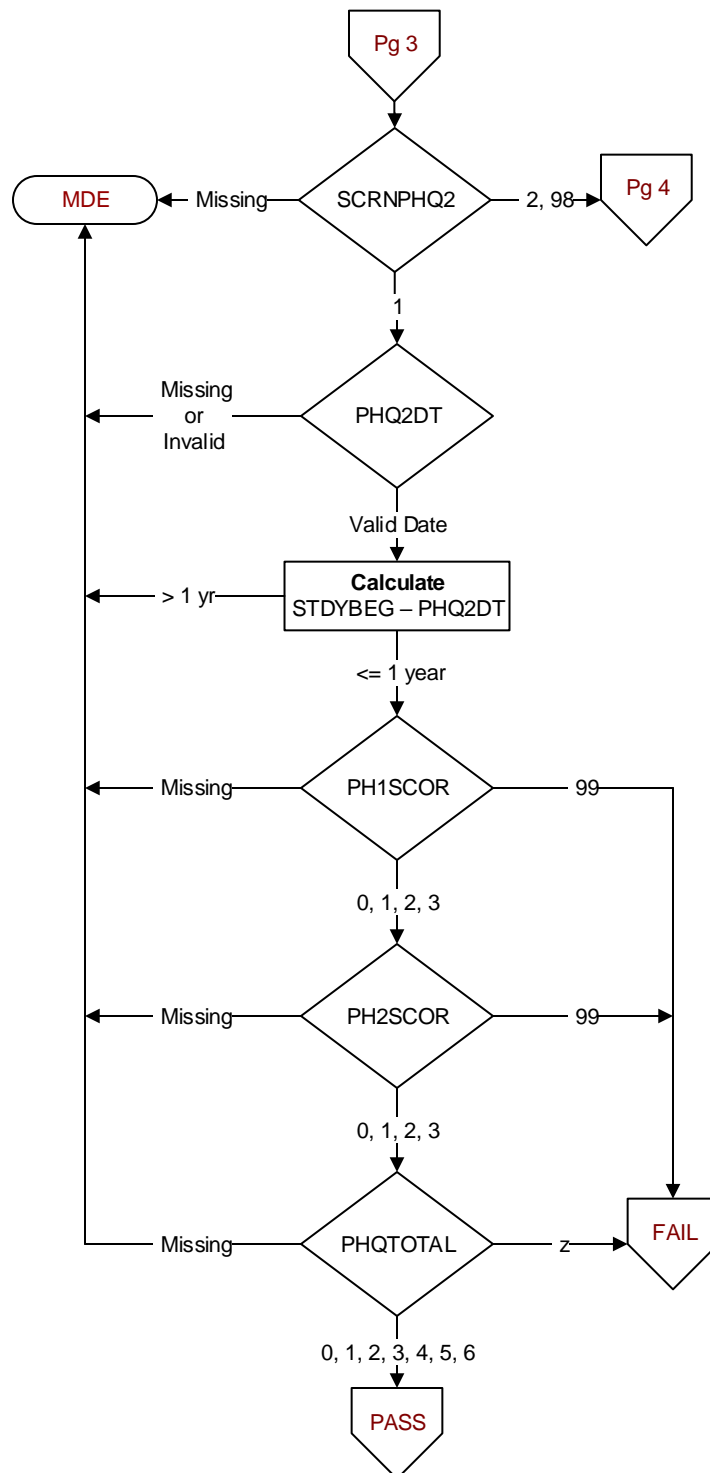
**SCRNPHQ2 (MH)**  
During the past year was the patient screened for depression by the PHQ-2?  
1. Yes  
2. No  
98. Patient refused depression screening by the PHQ-2

**PHQ2DT (MH)**  
Enter the date of the most recent screening for depression by the PHQ-2.

**PHQ1SCOR (MH)**  
Enter the score for PHQ-2 Question 1 documented in the record:  
**Over the past 2 weeks, have you been bothered by little interest or pleasure in doing things?**  
0. Not at all → 0  
1. Several days → 1  
2. More than half the days → 2  
3. Nearly every day → 3  
99. No answer documented

**PHQ2SCOR (MH)**  
Enter the score for PHQ-2 Question 2 documented in the record:  
**Over the past 2 weeks, have you been bothered by feeling down, depressed, or hopeless?**  
0. Not at all → 0  
1. Several days → 1  
2. More than half the days → 2  
3. Nearly every day → 3  
99. No answer documented

**PHQTOTAL (MH)**  
Enter the total score for the PHQ-2 questions documented in the medical record.



**SCRPHQ9 (MH)**  
During the past year was the patient screened for depression by the PHQ-9?  
1. Yes  
2. No  
98. Patient refused depression screening by the PHQ-9

**PHQ9QUES (MH)**  
Did the record document the patient's responses to all 9 questions of the PHQ-9?  
1. Yes  
2. No

**PHQ9DT (MH)**  
Enter the date of the most recent screening for depression by the PHQ-9.

**PH9TOTAL (MH)**  
Enter the total score of the PHQ-9 documented in the record.

