

**Document Links:**[HBPC Instrument](#)**COHORT**

69 – Home Based Primary Care

**ASESOXY2 (HBPC)**

During the time frame from (computer to display admisdt – 30 days to admisdt + 30 days) at a face-to-face encounter OR a CVT encounter prior to 7/01/2023, **or on or after 7/01/2023 if rural location**, was a home oxygen safety risk assessment documented by a HBPC team member to include all of the following components?

- Whether there are smoking materials in the home,
- Whether or not the home has functioning smoke detectors, and
- Whether there are other fire safety risks in the home, such as the potential for open flames

3. Yes, a home oxygen safety risk assessment including all components above was documented by a HBPC team member during a **face-to-face encounter** in the patient's home
4. Yes, a home oxygen safety risk assessment including all components above was documented by a HBPC team member during a CVT encounter prior to 7/01/2023, **or on or after 7/01/2023 if rural location**.
5. No home oxygen safety risk assessment was documented by a HBPC team member during a face-to-face or CVT encounter

During the HBPC team face-to-face or CVT encounter on (computer to display asesoxydt), did the HBPC team member inform and educate the patient/caregiver on home oxygen safety to include:

**OXYEDU1. The findings of the oxygen safety risk assessment**

1. Yes

2. No

**OXYEDU2. The causes of fire**

1. Yes

2. No

**OXYEDU3. Fire risks for neighboring residences and buildings**

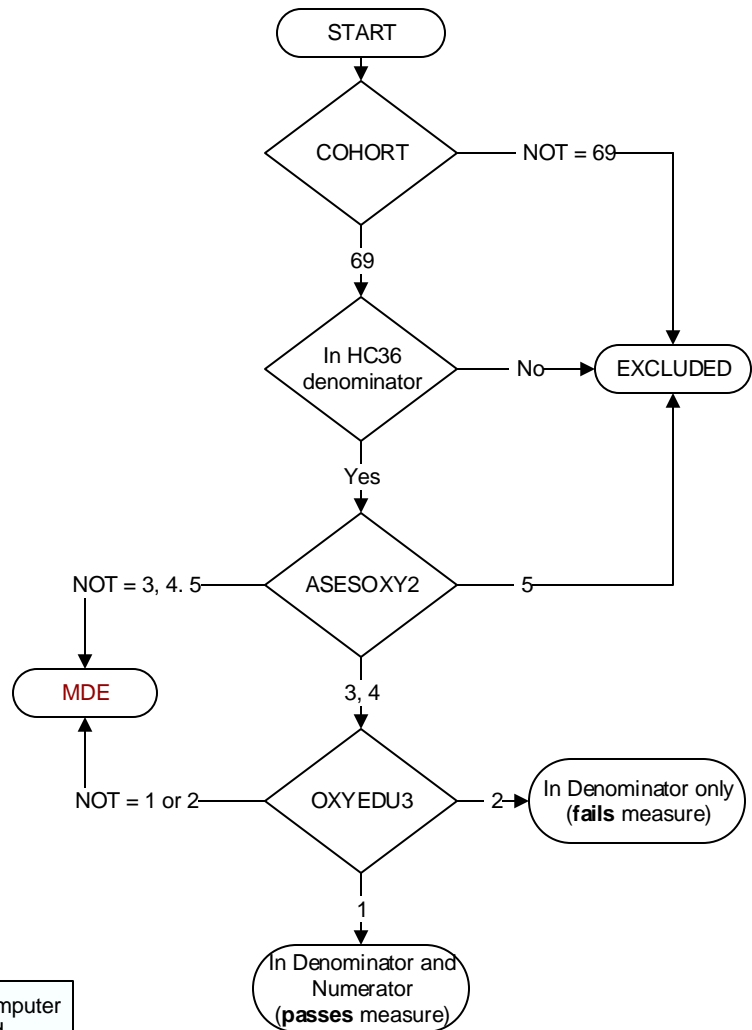
1. Yes

2. No

**OXYEDU4. Precautions that can prevent fire-related injuries**

1. Yes

2. No



**MDE = Missing or  
Invalid Data Exclusion  
(data error)**