

Document Links:

[CGPI Validation Module](#)
[CGPI PI Module](#)

COHORT
16. AMI - Outpatient visit
48. Female, age 20-69
50. Random Sample
51. Random Sample MH
54. Frail/Elderly
60. DM Outpatient

FEFLAG (rcvd on pull list)
FE case flagged for CGPI review / scoring?
0. No
1. Yes

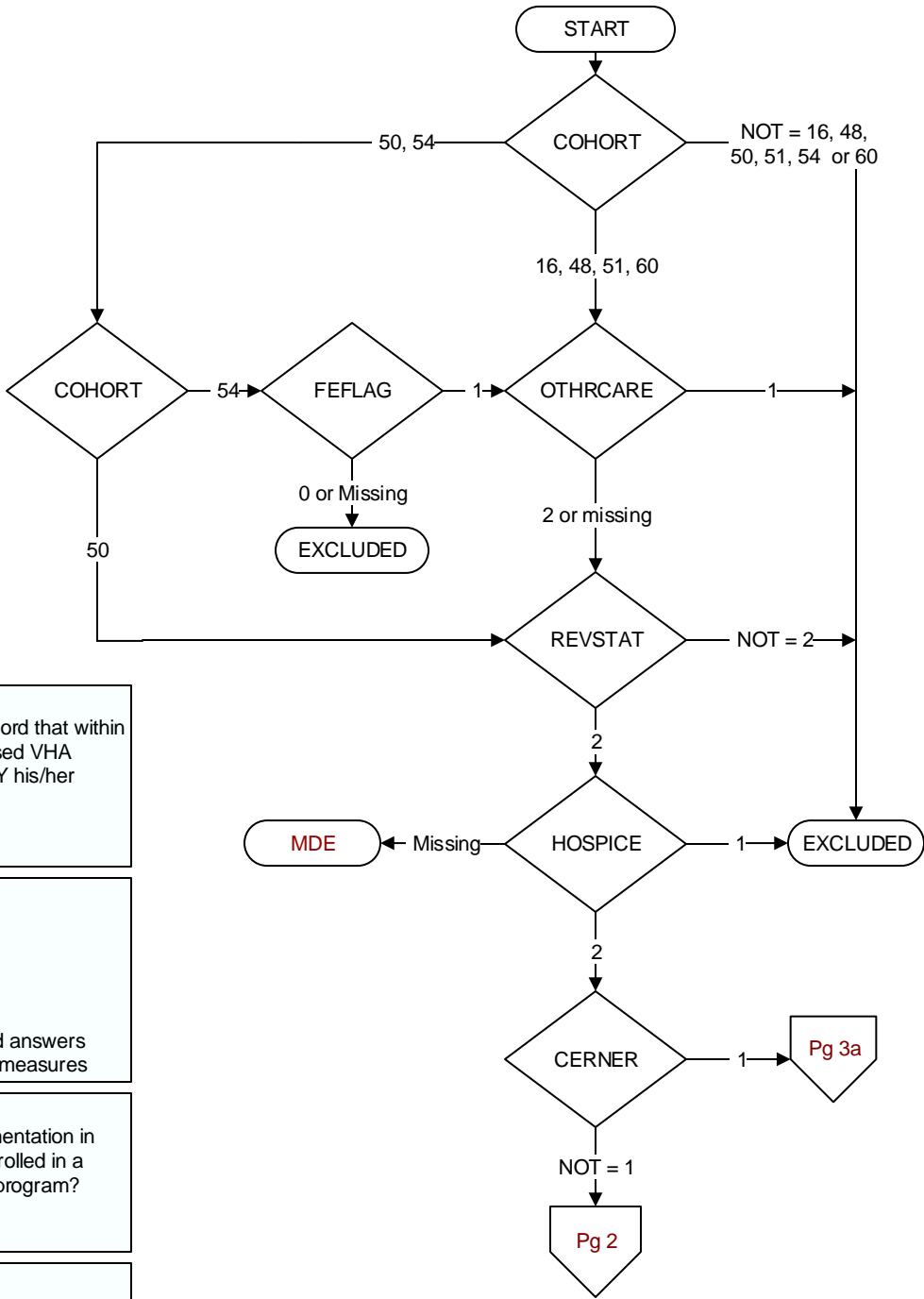
OTHCARE (Validation)
Is there evidence in the medical record that within the past two years, the patient refused VHA Primary Care and is receiving ONLY his/her primary care in a non-VHA setting?
1. yes
2. no

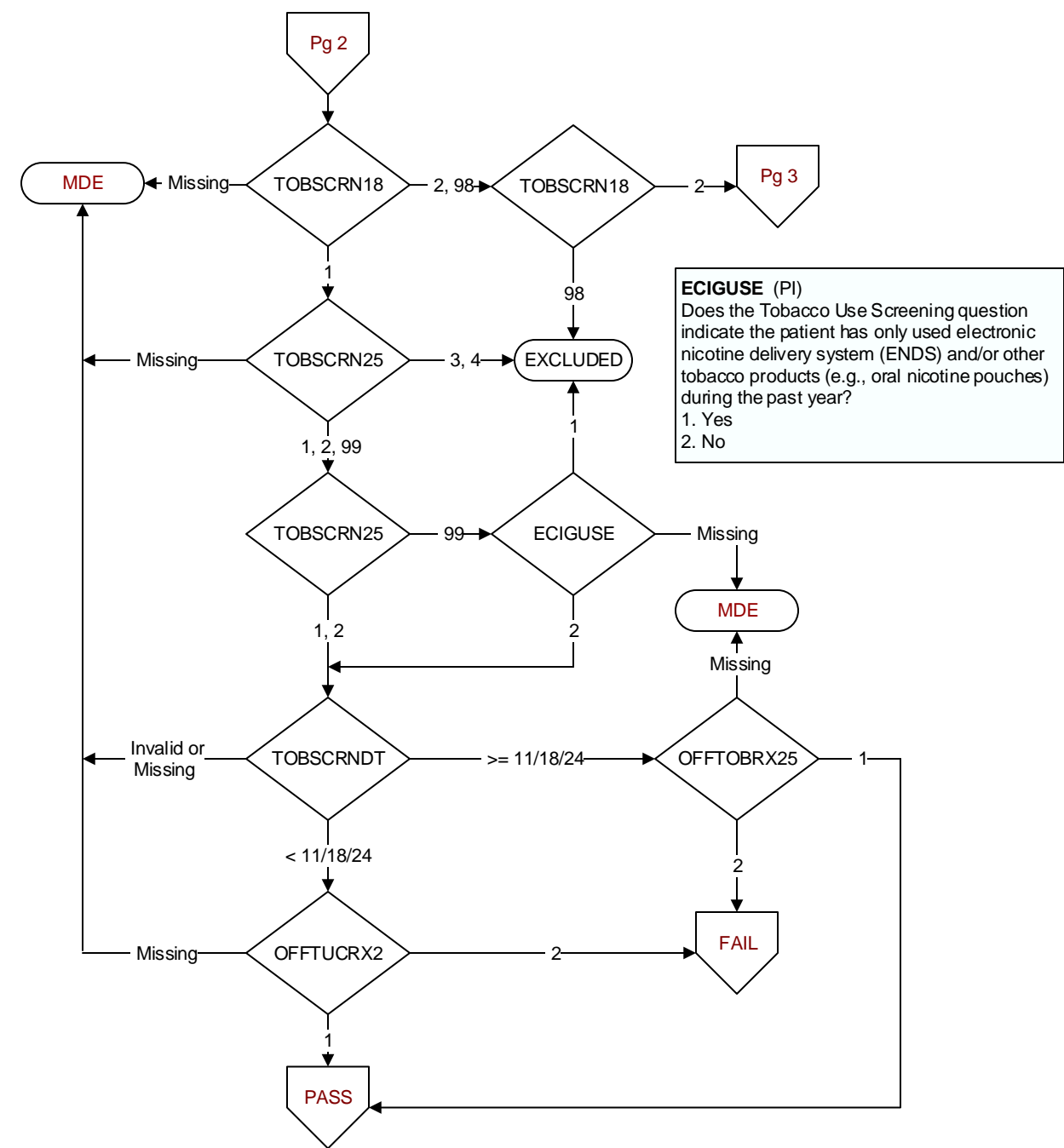
REVSTAT
REVIEW STATUS (not abstracted)
0. Abstraction has not begun
1. Abstraction in progress
2. Abstraction completed w/o errors
3. TVG failure (exclusion)
4. Record contains missing required answers
5. Administrative exclusion from all measures

HOSPICE (Validation)
During the past year is there documentation in the medical record the patient is enrolled in a VHA or community-based hospice program?
1. Yes
2. No

CERNER (system flag)
Flag indicating facility is using the Oracle Health eHR

MDE = Missing or Invalid Data Exclusion (data error)





TOBSCRN18 (PI module) During the past year, was the patient screened for tobacco use by clinical staff using the National Clinical Reminder for Tobacco Use ? 1. Yes 2. No 98. Patient declined to answer National Clinical Reminder for Tobacco Use screening questions	OFFTUCRX2 (PI) During the past year, was the patient offered FDA approved medications by a provider to assist in tobacco use cessation using the National Clinical Reminder for Tobacco Use? 1. Yes 2. No	TOBSCRNDT (PI) Enter the date of the most recent tobacco use screening by an acceptable provider using the National Clinical Reminder for Tobacco Use.
TOBSCRN2 (PI) During the time frame from (computer to display stdybeg – 1 year to <= pulldt or to 11/17/2024 if < pulldt), was the patient advised to quit smoking or stop using tobacco using the National Clinical Reminder for Tobacco Use? 1. Yes 2. No	OFFTOBRX25 (PI) During the past year, was the patient offered a FDA-approved medication to assist in tobacco use cessation by an acceptable provider using the National Clinical Reminder for Tobacco Follow-up? 1. Yes 2. No	

