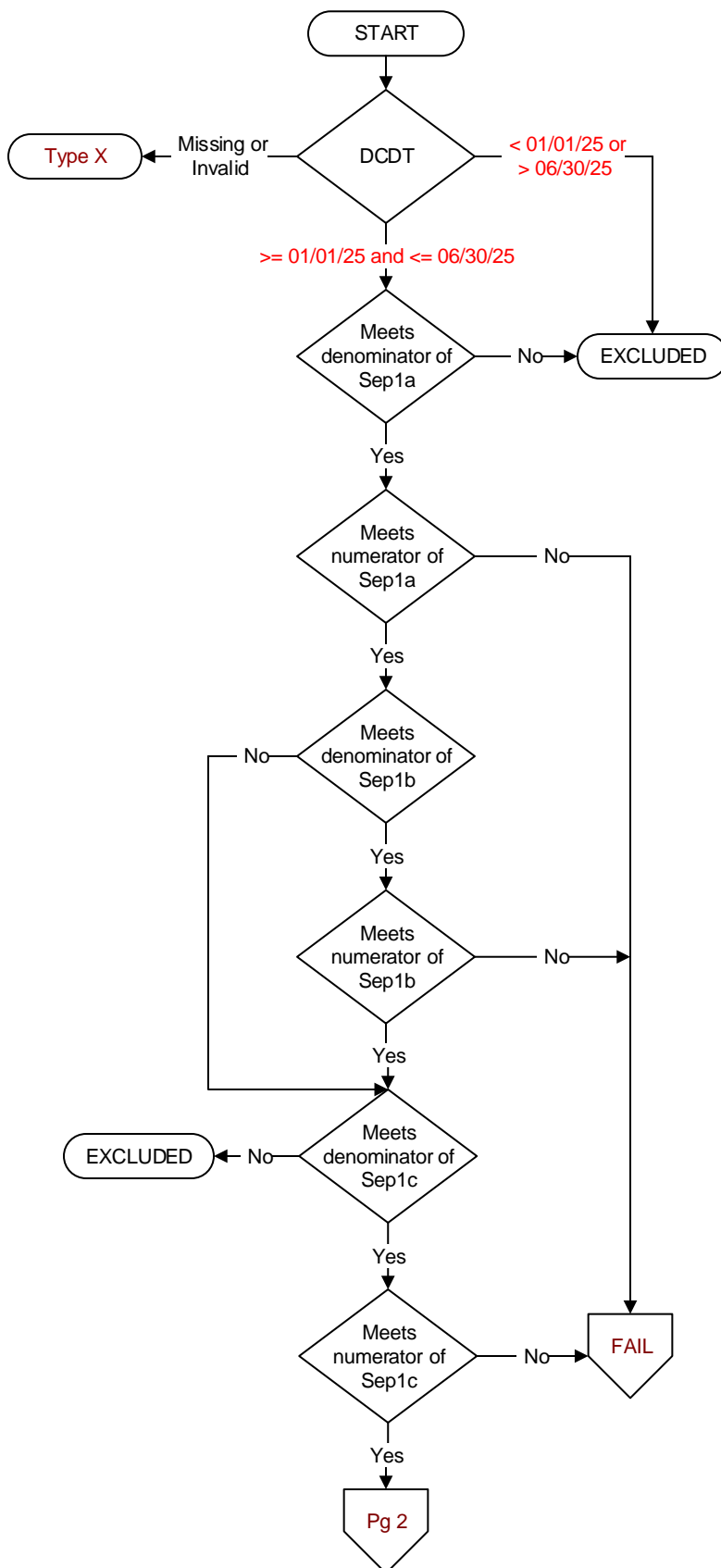
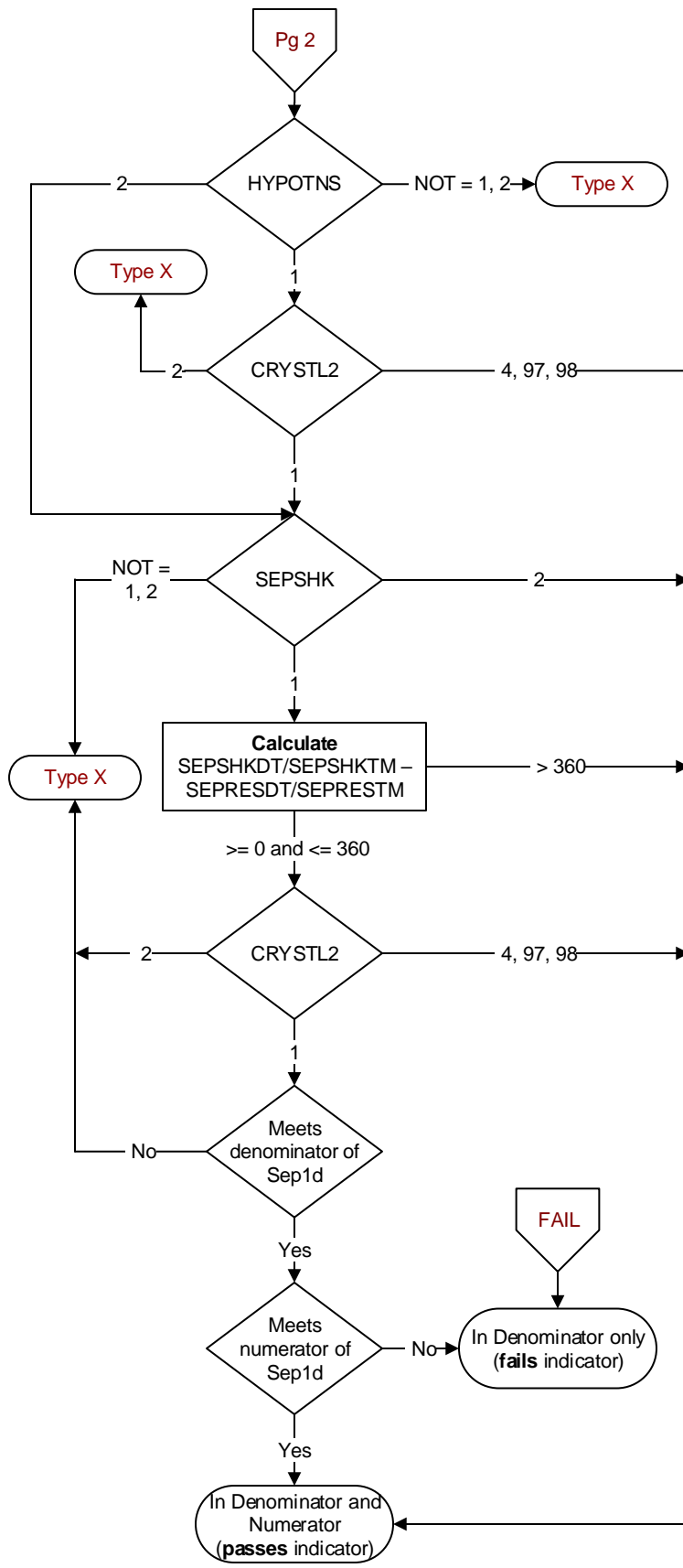


Document Links:

[Sepsis Instrument](#)





HYPOTNS

During the time frame from (computer to display sepresdt/seprestm - 6 hours) to (computer to display sepresdt/seprestm + 6 hours) is there documentation initial hypotension was present?

Criteria for determining initial hypotension:

- Two hypotensive blood pressure readings at different times within specified timeframe
 - o systolic blood pressures <90, or
 - o mean arterial pressures (MAP), <65 or
 - o a decrease in systolic BP by >40 mm/Hg

1. Yes
2. No or unable to determine

CRYSTL2

During the timeframe from [(If hypotns = 1, and sepskh = 2, computer to display hypotnsdt/hypotnstm - 6 hours) to (hypotnsdt/hypotnstm + 3 hours) OR (If hypotns = 2 and sepskh = 1 computer to display sepskhdt/sepskhkm - 6 hours) to (sepskhdt/sepskhkm + 3 hours) OR (if hypotns = 1 and sepskh = 1, computer to display earliest of hypotnsdt/hypotnstm - 6 hrs) to (hypotnsdt/hypotnstm + 3 hours or sepskhdt/sepskhkm - 6 hours to sepskhdt/sepskhkm + 3 hours) were crystalloid fluids initiated?

1. Yes
2. No
4. There is documentation the patient has an implanted Ventricular Assist Device (VAD)
97. Documentation no fluids were ordered because the patient was not volume or fluid responsive by clinical evidence.
98. The patient or authorized patient advocate refused IV fluids.

SEPSHK

Did a physician/APN/PA document presence of septic shock or severe sepsis with shock?

1. Yes
2. No or unable to determine

SEPSHKDT / SEPSHKTM

Enter the earliest date and time a physician/APN/PA documented the presence of septic shock OR the earliest date and time on which the final criterion was met to establish the presence of septic shock.

SEPRESDT

Computer to auto-fill earliest valid date entered in sepd2, shkdt, or sepsid2.

SEPRESTM

Computer to auto-fill earliest valid time entered in septm2, shktm, or sepsistm.