

**Document Links:**

[Sepsis Instrument](#)

**REVSTAT**

REVIEW STATUS (not abstracted)

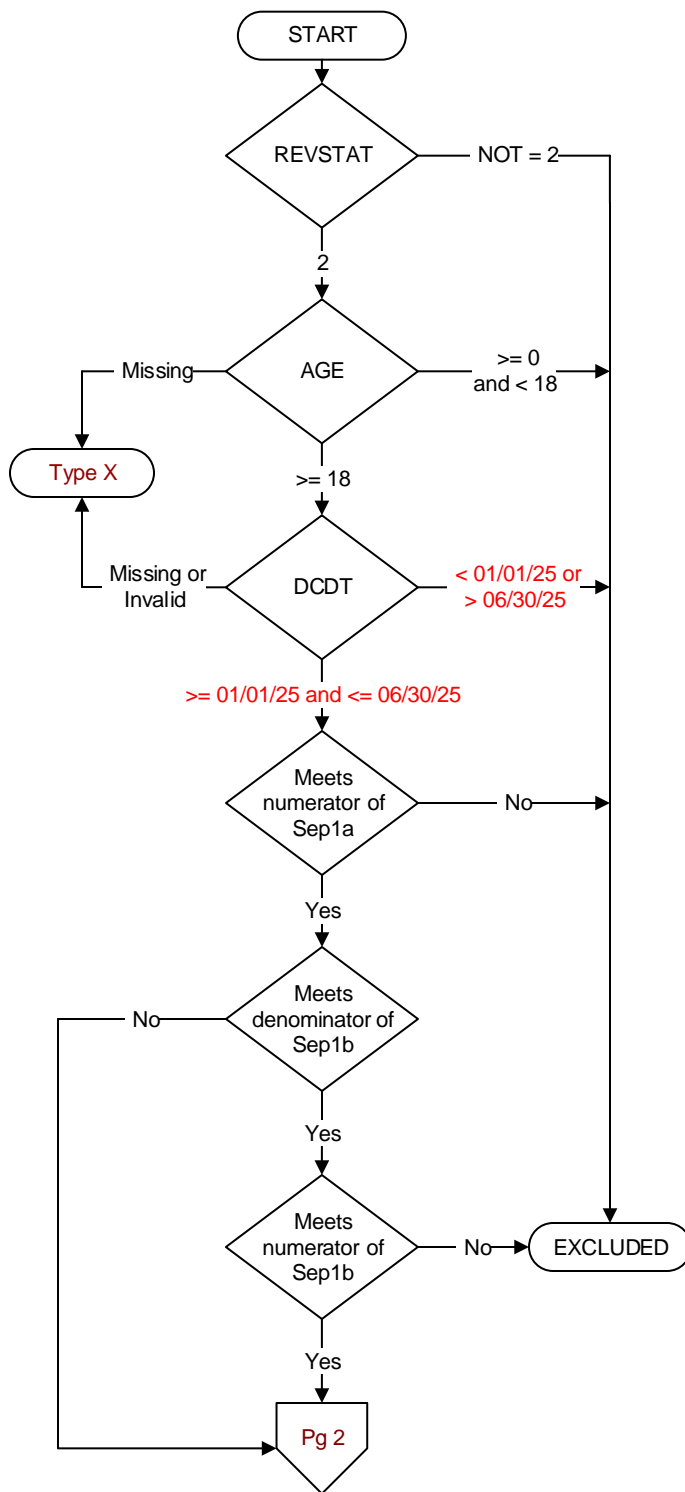
- 0. Abstraction has not begun
- 1. Abstraction in progress
- 2. Abstraction completed w/o errors
- 3. Cohort validation failure (exclusion)
- 4. Record contains missing data
- 5. Administrative exclusion from all measures

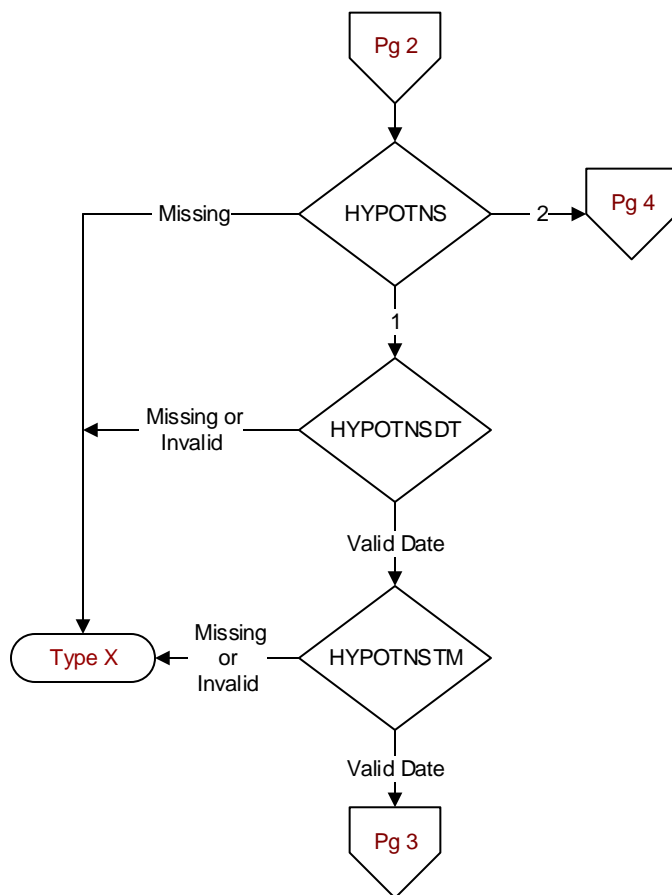
**AGE**

Calculated field – ADMDT - BIRTHDT

**DCDT**

Discharge date





#### HYPOTNS

During the time frame from (computer to display sepresdt/seprestm - 6 hours) to (computer to display sepresdt/seprestm + 6 hours) is there documentation initial hypotension was present?

Criteria for determining initial hypotension:

- Two hypotensive blood pressure readings at different times within specified timeframe
  - o systolic blood pressures <90, or
  - o mean arterial pressures (MAP), <65 or
  - o a decrease in systolic BP by >40 mm/Hg

1. Yes

2. No or unable to determine

#### HYPOTNSDT / HYPOTNSTM

Enter the date and time on which initial hypotension was present during the time frame from (computer to display sepresdt/seprestm - 6 hours to sepresdt/seprestm + 6 hours).

**CRYSTL2**

During the timeframe from [(If hypotns = 1, and sepskh = 2, computer to display hypotnsdt/hypotnstm - 6 hours) to (hypotnsdt/hypotnstm + 3 hours) OR (If hypotns = 2 and sepskh = 1 computer to display sepskhdt/sepskhkm - 6 hours) to (sepskhdt/sepskhkm + 3 hours) OR (if hypotns = 1 and sepskh = 1, computer to display earliest of hypotnsdt/hypotnstm - 6 hrs) to (hypotnsdt/hypotnstm + 3 hours or sepskhdt/sepskhkm - 6 hours to sepskhdt/sepskhkm + 3 hours) were crystalloid fluids initiated?

1. Yes

2. No

4. There is documentation the patient has an implanted Ventricular Assist Device (VAD)

97. Physician/APN/PA or nursing documentation no fluids were ordered because the patient was not volume or fluid responsive by clinical evidence.

98. The patient or authorized patient advocate refused IV fluids.

**TARGVOL**

Is there documentation the target ordered volume of crystalloid fluids (computer to display crystlvol) initiated on (computer to display crystldt at crystltm) was completely infused?

**Include crystalloid fluid volumes ordered that are:**

- Equivalent to 30mL/kg; **OR**
- A volume within 10% less than 30 mL/kg; **OR**
- A lesser volume with the volume of fluids to be administered AND a reason for the lesser target ordered volume specifically documented by the physician/APN/PA within a single source
- Include those given at a rate of > 125 mL/hr towards the target ordered volume
- Order includes the type of fluid, volume of fluid, rate or infusion duration

1. Yes

2. No

**PERSHYPO**

During the time frame from (computer display crystlend) to (computer to display crystlend + 1 hour) is there physician/APN/PA documentation that persistent hypotension or new onset of hypotension was present?

Criteria for determining persistent or new onset of hypotension:

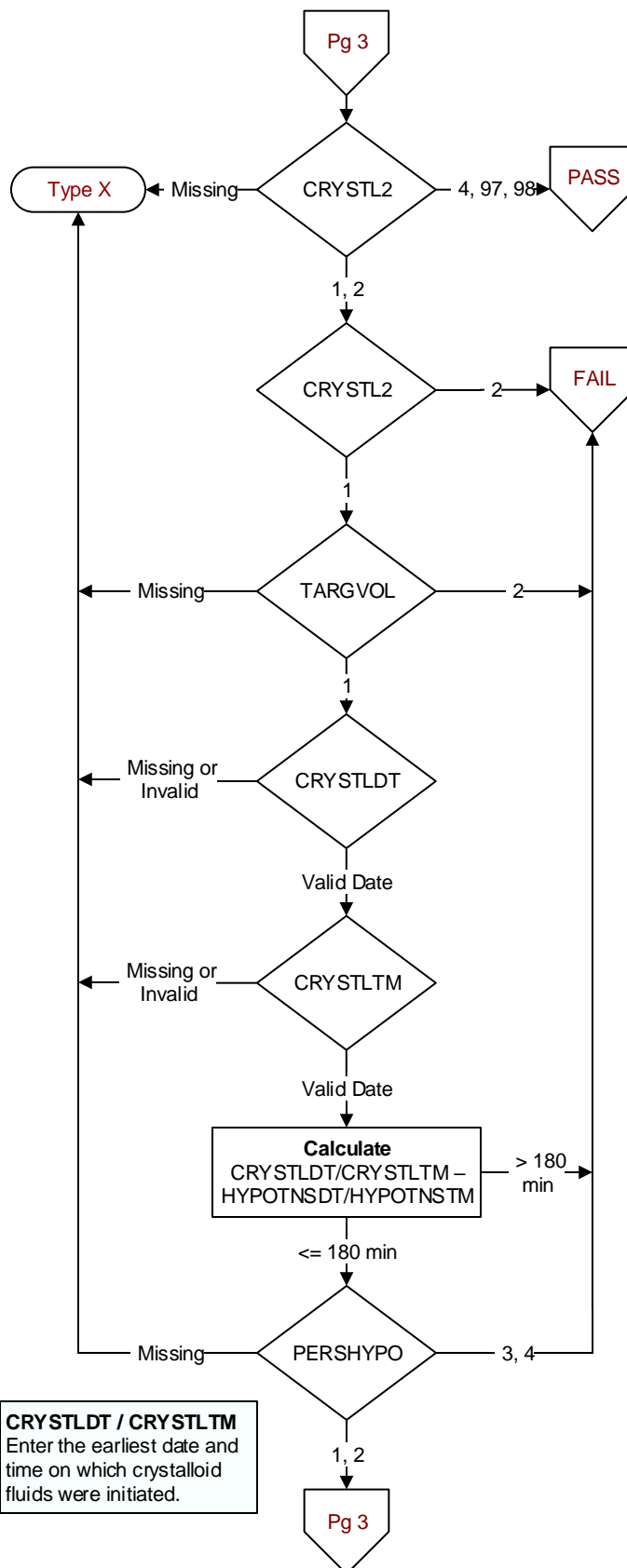
- Two hypotensive blood pressure readings at different times within specified timeframe
  - o systolic blood pressures <90, or
  - o mean arterial pressures (MAP), <65 or
  - o a decrease in systolic BP by >40 mm/Hg

1. Yes

2. No or Unable to determine

3. No, the patient was not assessed for persistent hypotension or new onset of hypotension within one hour after the conclusion of crystalloid fluid administration at the target ordered volume.

4. Not applicable - Crystalloid fluids were administered but at a volume less than the target ordered volume



### SEPSHK

Did a physician/APN/PA document presence of septic shock, severe sepsis with shock, or sepsis with shock?

1. Yes
2. No or unable to determine

### SEPSHKDT / SEPSHKTM

Enter the earliest date and time a physician/APN/PA documented the presence of septic shock OR the earliest date on which the final criterion was met to establish the presence of septic shock.

### CNTRASEPSHK

During the timeframe from (computer to display sepshtk - 6 hours) to (computer to display sepshtk + 6 hours) is there physician/APN/PA or nursing documentation that the patient or authorized patient advocate refused either a blood draw, IV fluid administration, or vasopressor administration?

1. Yes
2. No or unable to determine

### CMOPLC2

During the timeframe from (computer to display sepshtk - 6 hours) to (computer to display sepshtk + 6 hours) is there physician/APN/PA documentation of comfort measures only or palliative care (see Inclusion terms below)?

Inclusion (Or synonymous terms)	
Brain death/dead	Hospice care
Comfort care	Organ harvest
Comfort measures	Palliative Care
Comfort measures only (CMO)	Organ harvest
Comfort only	Terminal care
Do Not Resuscitate Comfort Care (DNR-CC)	Terminal extubation
End of life care	Withdraw care
Hospice	Withhold care

1. Yes
2. No

