

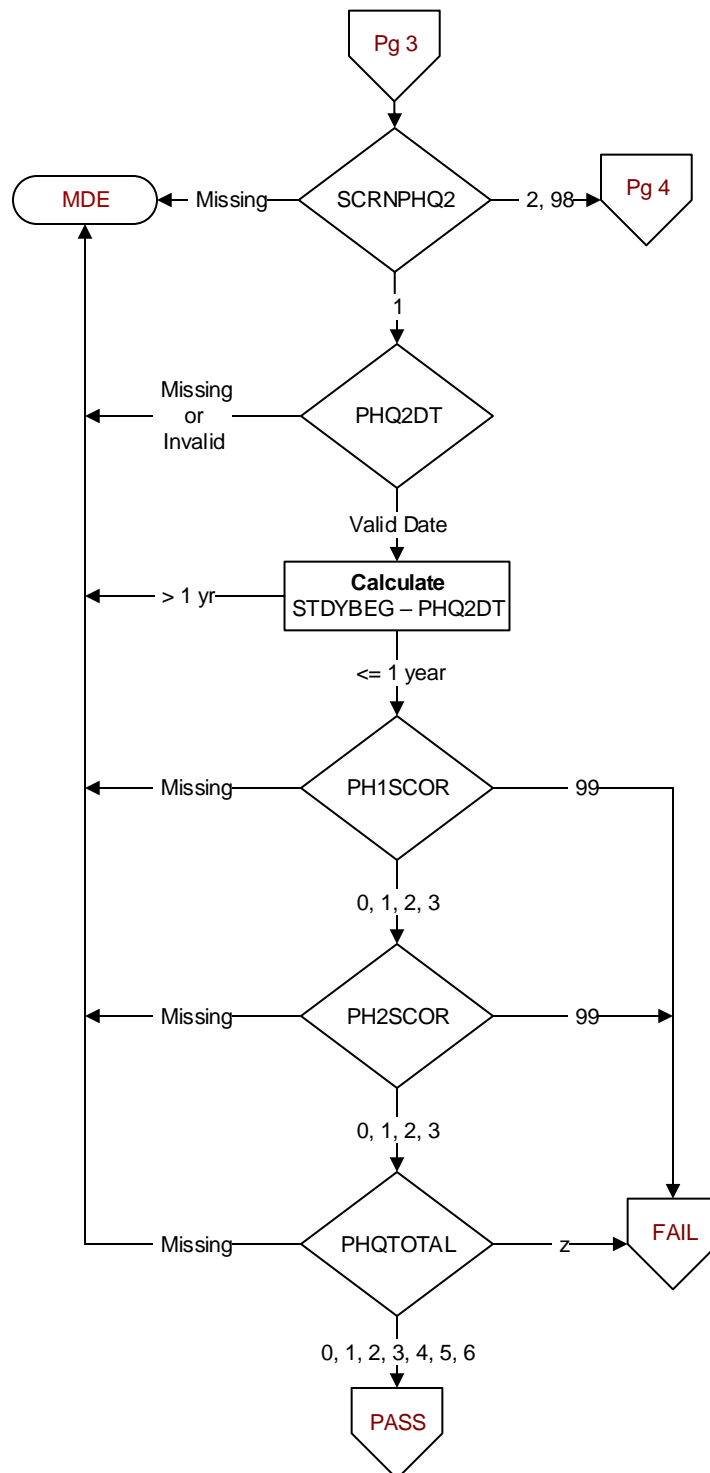
SCRNPHQ2 (MH)
During the past year was the patient screened for depression by the PHQ-2?
1. Yes
2. No
98. Patient refused depression screening by the PHQ-2

PHQ2DT (MH)
Enter the date of the most recent screening for depression by the PHQ-2.

PHQ1SCOR (MH)
Enter the score for PHQ-2 Question 1 documented in the record:
Over the past 2 weeks, have you been bothered by little interest or pleasure in doing things?
0. Not at all → 0
1. Several days → 1
2. More than half the days → 2
3. Nearly every day → 3
99. No answer documented

PHQ2SCOR (MH)
Enter the score for PHQ-2 Question 2 documented in the record:
Over the past 2 weeks, have you been bothered by feeling down, depressed, or hopeless?
0. Not at all → 0
1. Several days → 1
2. More than half the days → 2
3. Nearly every day → 3
99. No answer documented

PHQTOTAL (MH)
Enter the total score for the PHQ-2 questions documented in the medical record.



SCRPHQ9 (MH)
During the past year was the patient screened for depression by the PHQ-9?
1. Yes
2. No
98. Patient refused depression screening by the PHQ-9

PHQ9QUES (MH)
Did the record document the patient's responses to all 9 questions of the PHQ-9?
1. Yes
2. No

PHQ9DT (MH)
Enter the date of the most recent screening for depression by the PHQ-9.

PH9TOTAL (MH)
Enter the total score of the PHQ-9 documented in the record.

