

Document Links:
[HBPC Instrument](#)
COHORT

69 – Home Based Primary Care

REVSTAT

REVIEW STATUS (not abstracted)

0. Abstraction has not begun
1. Abstraction in progress
2. Abstraction completed w/o errors
3. TVG failure (exclusion)
4. Record contains missing data
5. Administrative exclusion from all measures

HOSPICE

During the past year, is there documentation in the medical record the patient is enrolled in a VHA or community-based hospice program?

1. Yes
2. No

DEMENTDX2 (MH)

During the past year, does the record document a diagnosis of dementia/neurocognitive disorder as evidenced by one of the following ICD-10-CM diagnosis codes:

A81.00, A81.01, A81.09, A81.2, A81.82, A81.89, A81.9, F01.50, , F01.511, F01.518, F01.52 – F01.54, F01.A0, F01.A11, F01.A18, F01.A2 – F01.A4, F01.B0, F01.B11, F01.B18, F01.B2 – F01.B4, F01.C0, F01.C11, F01.C18, F01.C2 – F01.C4, F02.80, , F02.811, F02.818, F02.82 – F02.84, F02.A0, F02.A11, F02.A18, F02.A2 – F02.A4, F02.B0, F02.B11, F02.B18, F02.B2 – F02.B4, F02.C0, F02.C11, F02.C18, F02.C2 – F02.C4, F03.90, , F03.911, F03.918, F03.92 – F03.94, F03.A0, F03.A11, F03.A18, F03.A2 – F03.A4, F03.B0, F03.B11, F03.B18, F03.B2 – F03.B4, F03.C0, F03.C11, F03.C18, F03.C2 – F03.C4, F10.27, F10.97, F13.27, F13.97, F18.17, F18.27, F18.97, F19.17, F19.27, F19.97, G23.1, G30.0, G30.1, G30.8, G30.9, G31.01, G31.09, G31.83, G90.3

1. Yes
2. No

PERMCI

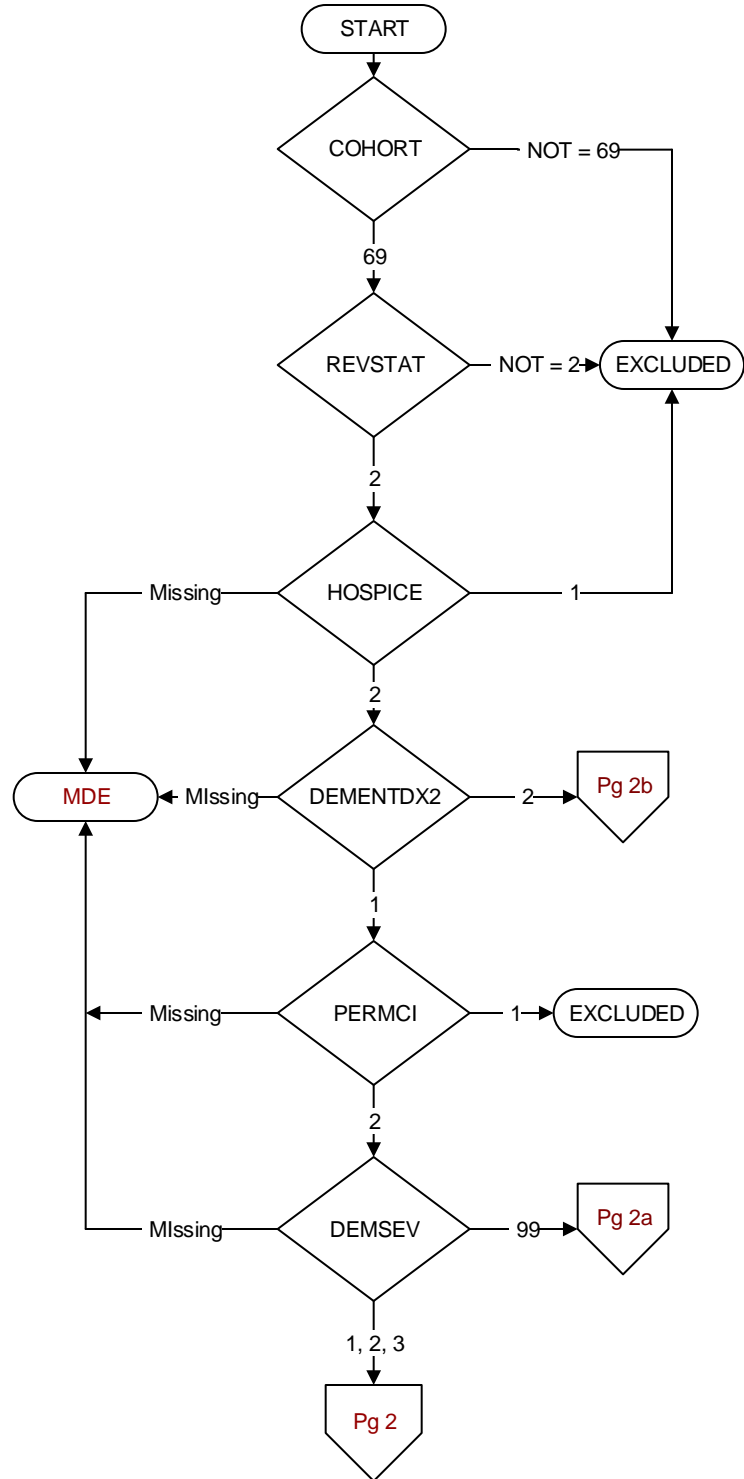
During the past year, did a physician/APN/PA or psychologist document that the patient has probable permanent cognitive impairment using a Clinical Reminder?

1. Yes
2. No

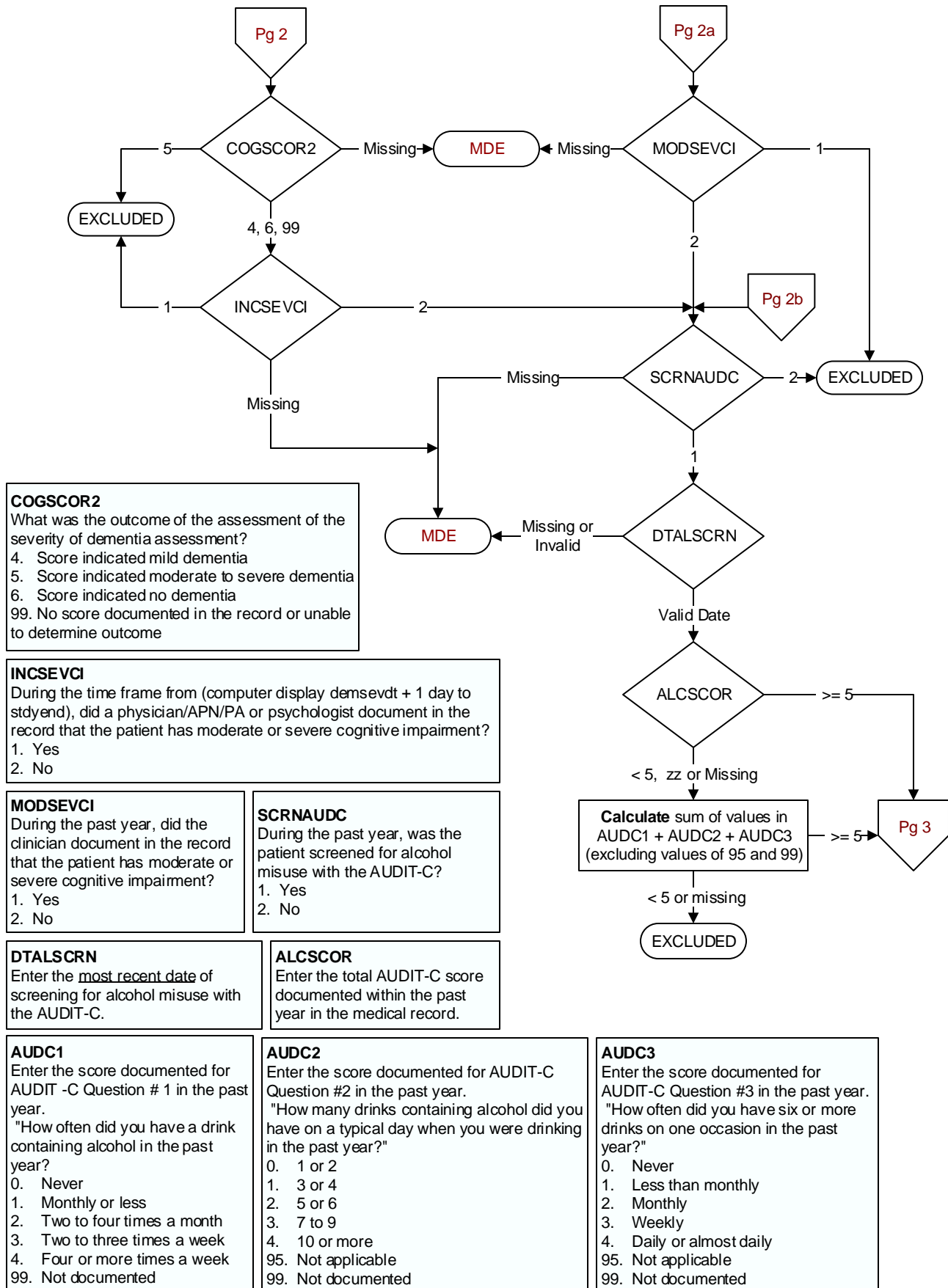
DEMSEV

Was the severity of dementia assessed during the past year using one of the following standardized tools?

1. Clinical Dementia Rating Scale (CDR)
2. Functional Assessment Staging Tool (FAST)
3. Global Deterioration Scale (GDS)
99. Severity of dementia was not assessed during the past year using one of the specified tools



**MDE = Missing or
Invalid Data Exclusion
(data error)**



During the time frame from (Computer to enter DTALSCRN to DTALSCRN +14 days), does the record document any of the following components of brief alcohol intervention/counseling for past-year drinkers?

Indicate all that apply and the date brief alcohol intervention/counseling was noted in the record:

ALCBAI3. Advised/informed patient to abstain OR explicitly advised/informed patient to drink within recommended limits
ALBAI3DT: Date of ALCBAI3
ALCBAI4. Provided personalized feedback regarding relationship of alcohol to the patient's specific health issues OR general alcohol-related intervention/counseling (not linked to patient's issues)
ALBAI4DT: Date of ALCBAI4
ALCBAI99. No alcohol intervention/counseling documented

-1 = Yes
 0 = No

