

Document Links:

[CGPI Validation Module](#)  
[CGPI PI Module](#)

**COHORT**  
16. AMI - Outpatient visit  
48. Female, age 20-69  
50. Random Sample  
51. Random Sample MH  
54. Frail/Elderly  
60. DM Outpatient

**FEFLAG** (rcvd on pull list)  
FE case flagged for CGPI review / scoring?  
0. No  
1. Yes

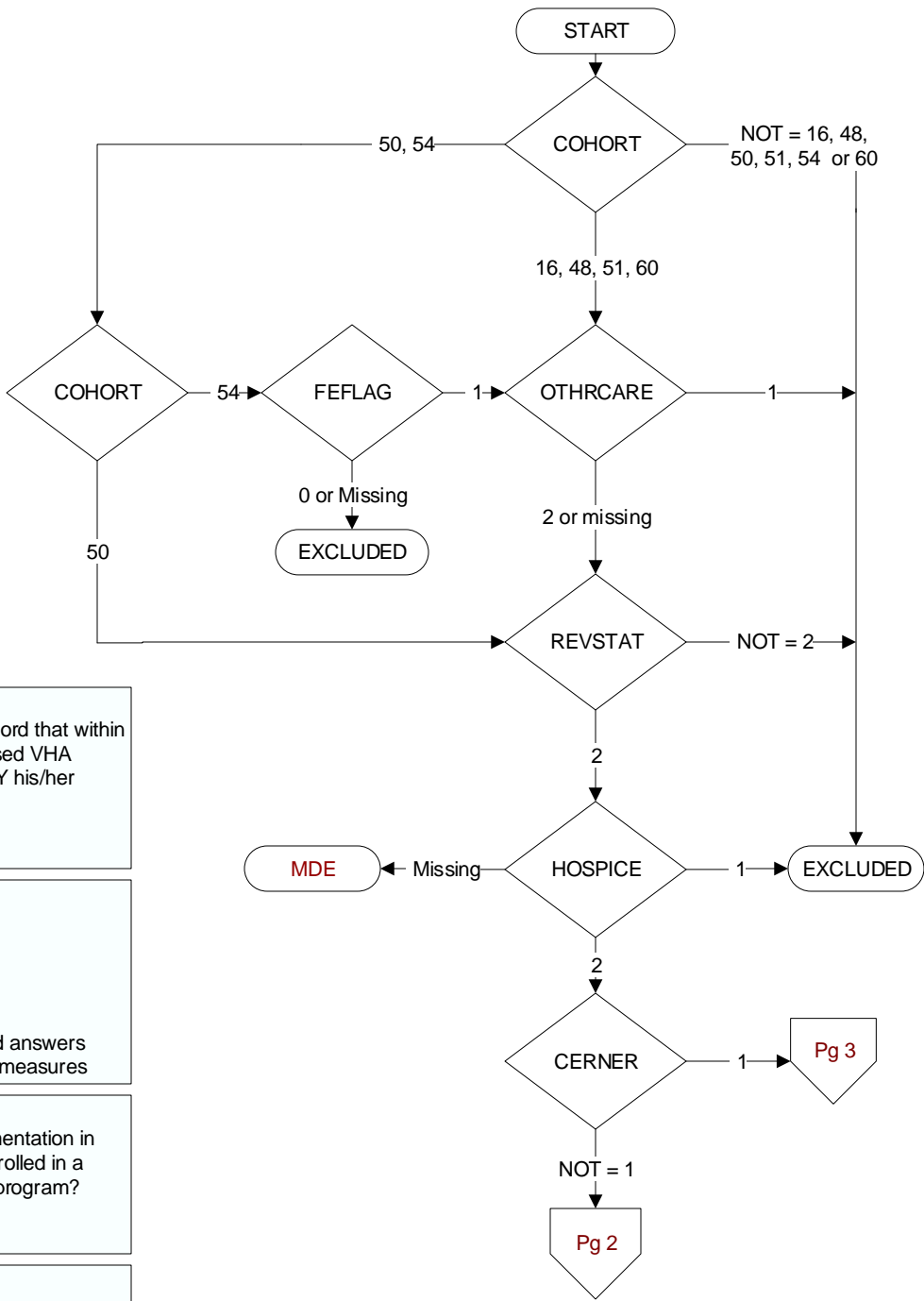
**OTHCARE** (Validation)  
Is there evidence in the medical record that within the past two years, the patient refused VHA Primary Care and is receiving ONLY his/her primary care in a non-VHA setting?  
1. yes  
2. no

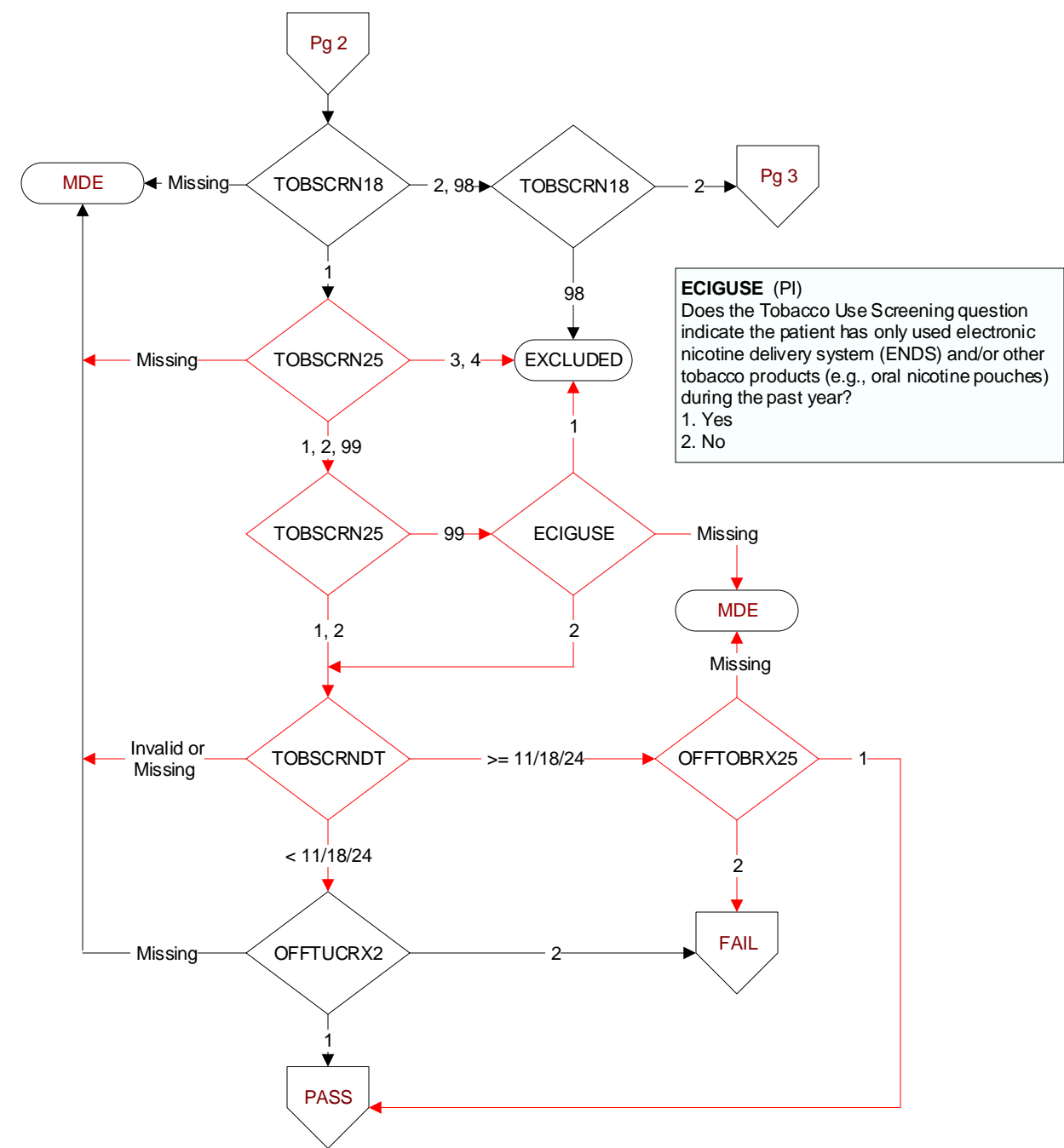
**REVSTAT**  
REVIEW STATUS (not abstracted)  
0. Abstraction has not begun  
1. Abstraction in progress  
2. Abstraction completed w/o errors  
3. TVG failure (exclusion)  
4. Record contains missing required answers  
5. Administrative exclusion from all measures

**HOSPICE** (Validation)  
During the past year is there documentation in the medical record the patient is enrolled in a VHA or community-based hospice program?  
1. Yes  
2. No

**CERNER** (system flag)  
Flag indicating facility is using the Oracle Health eHR

MDE = Missing or Invalid Data Exclusion (data error)





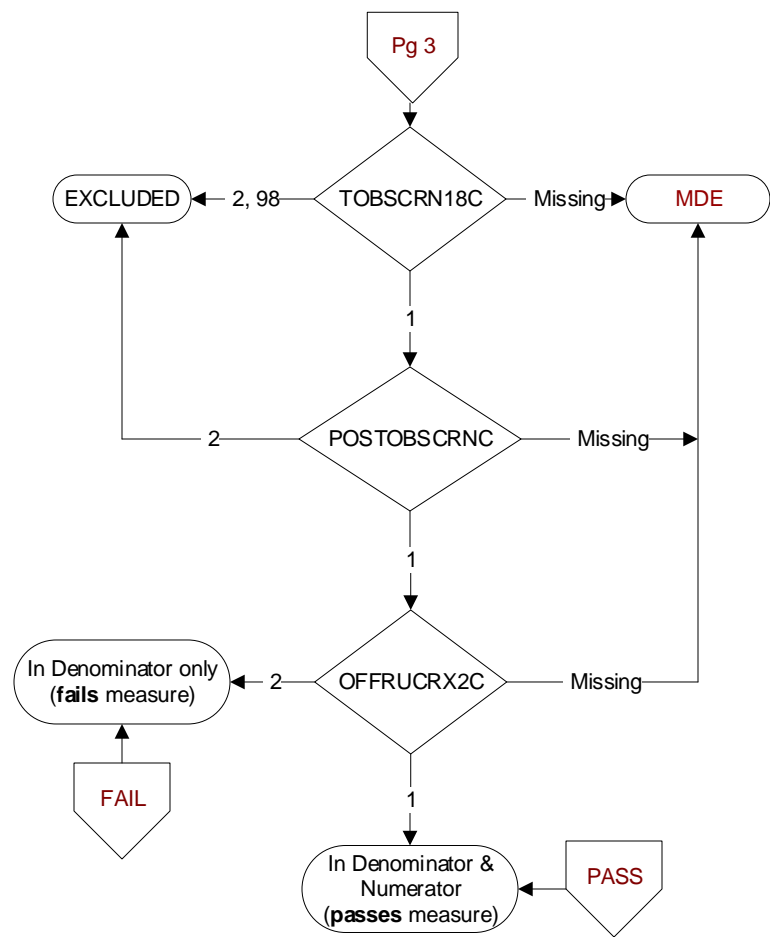
**TOBSCRN18 (PI module)**  
During the past year, was the patient screened for tobacco use by clinical staff using the **National Clinical Reminder for Tobacco Use**?  
1. Yes  
2. No  
98. Patient declined to answer National Clinical Reminder for Tobacco Use screening questions

**OFFTUCRX2 (PI)**  
During the time frame from (computer to display stdybeg – 1 year to <= pulldt or to 11/17/2024 if < pulldt), was the patient offered FDA approved medications by a provider to assist in tobacco use cessation using the National Clinical Reminder for Tobacco Use?  
1. Yes  
2. No

**TOBSCRN2 (PI)**  
During the time frame from (computer to display stdybeg – 1 year to <= pulldt or to 11/17/2024 if < pulldt), was the patient advised to quit smoking or stop using tobacco using the National Clinical Reminder for Tobacco Use?  
1. Yes  
2. No

**TOBSCRNDT (PI)**  
Enter the date of the most recent tobacco use screening by an acceptable provider using the National Clinical Reminder for Tobacco Use.

**OFFTOBRX25 (PI)**  
During the past year, was the patient offered a FDA-approved medication to assist in tobacco use cessation by an acceptable provider using the National Clinical Reminder for Tobacco Follow-up?  
1. Yes  
2. No



<b>TOBSCRN18C (PI)</b> During the past year, was the patient screened for tobacco use by an acceptable provider? 1. Yes 2. No 98. Patient declined to answer screening questions
<b>POSTOBSCRNC (PI)</b> Was the tobacco screening done on (computer to display tobscmdtc) positive for tobacco use? 1. Yes 2. No
<b>OFFTUCRX2C (PI)</b> During the past year, was the patient offered FDA approved medications by a provider to assist in tobacco use cessation? 1. Yes 2. No