

### Document Links:

[Sepsis Instrument](#)

### REVSTAT

REVIEW STATUS (not abstracted)  
 0. Abstraction has not begun  
 1. Abstraction in progress  
 2. Abstraction completed w/o errors  
 3. TVG failure (exclusion)  
 4. Record contains missing data or errors  
 5. Administrative exclusion from all measures

### AGE

Calculated field – ADMDT - BIRTHDT

### DCDT

Discharge date

### ADMDT

Admission date

### TRNSFR

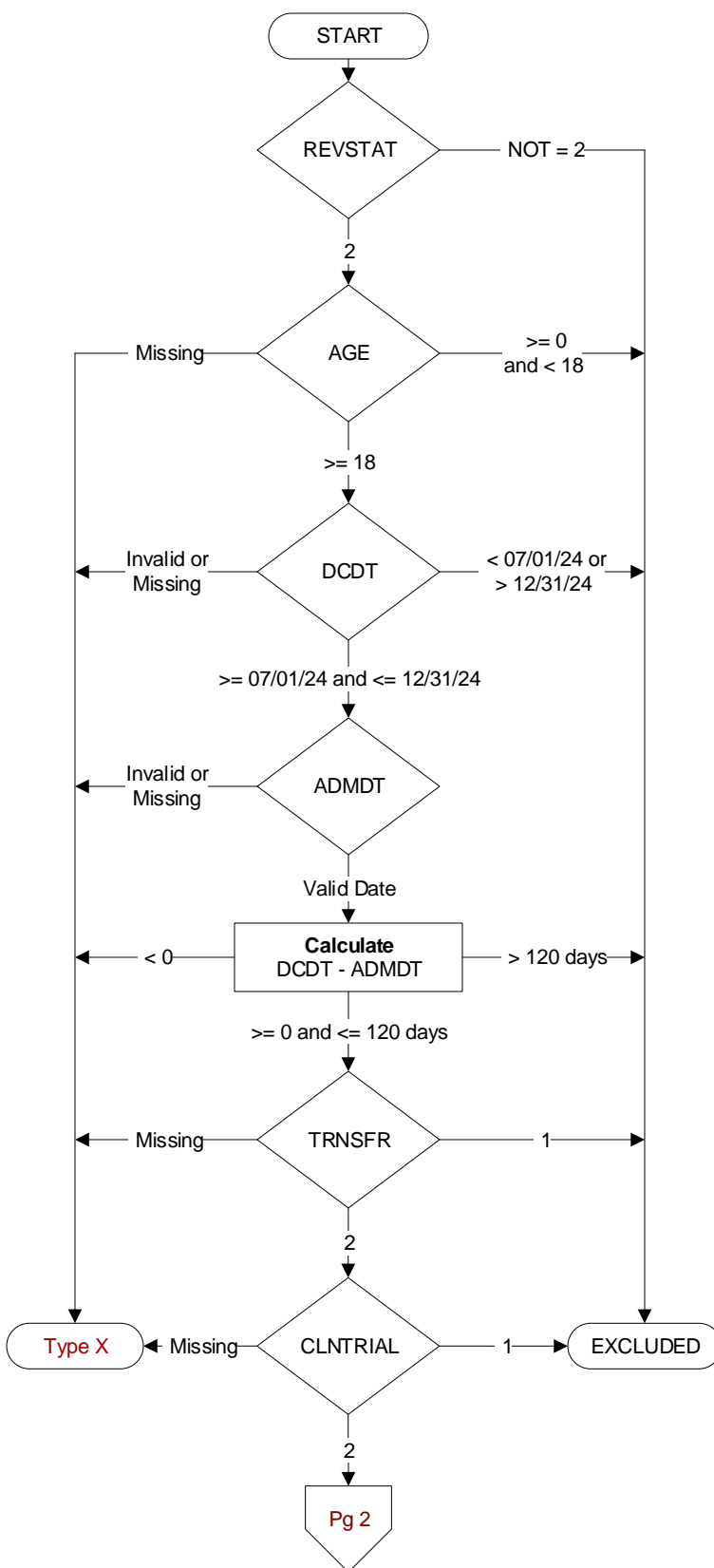
Is there documentation the patient was received as a transfer from an inpatient, outpatient or emergency/observation department of an outside hospital or from an ambulatory surgery center?

1. Yes
2. No

### CLNTRIAL

During this hospital stay, was the patient enrolled in a clinical trial in which patients with sepsis/septic shock were being studied?

1. Yes
2. No

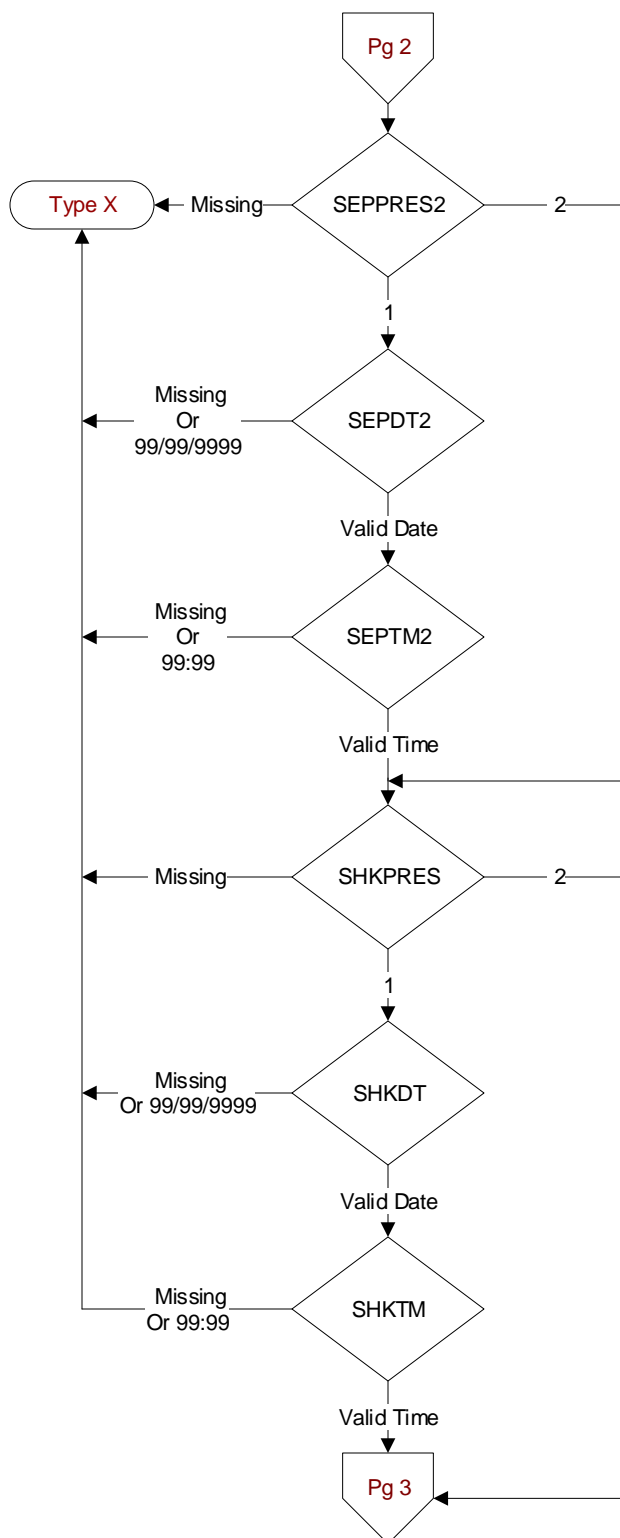


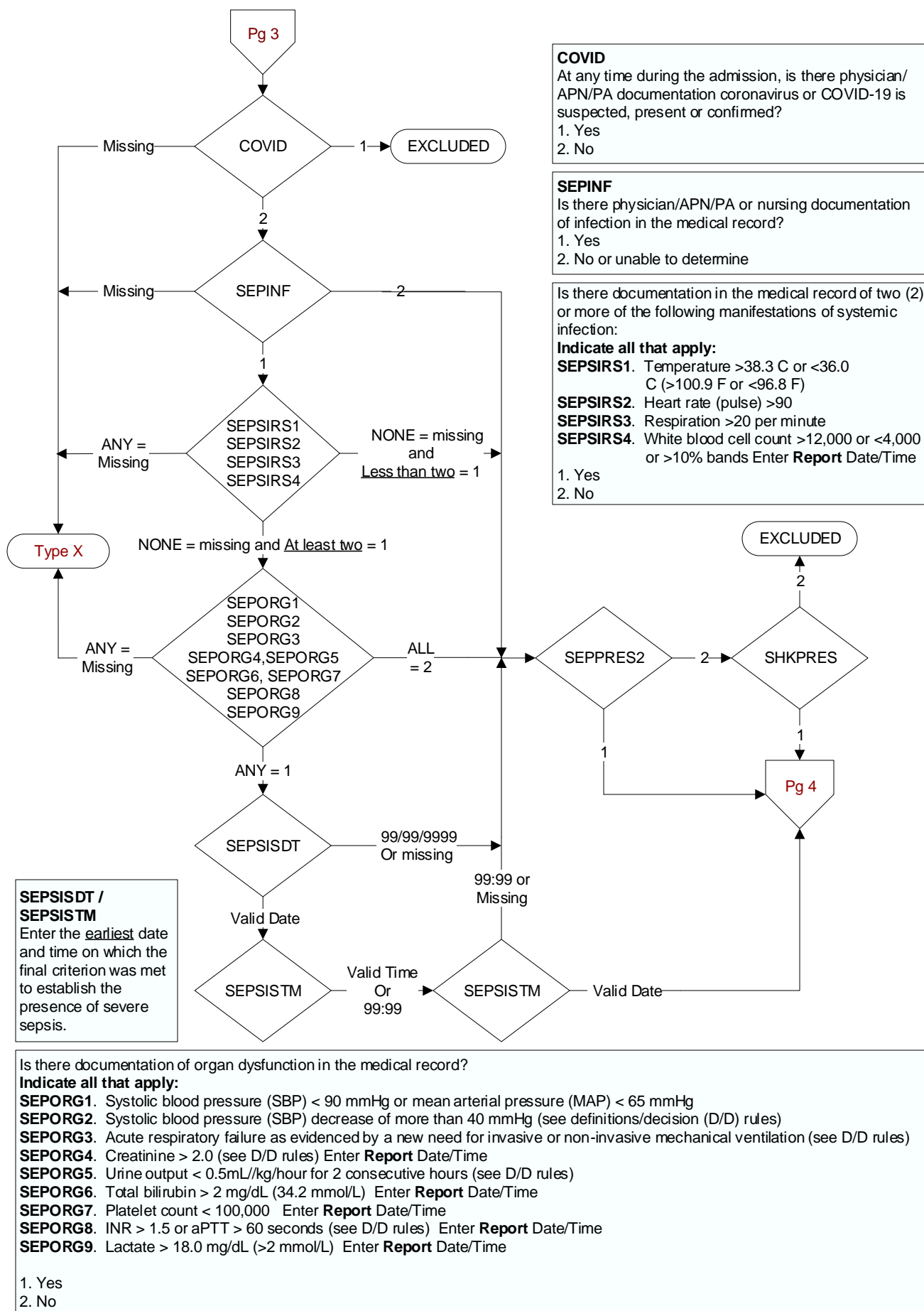
**SEPPRES2**  
Did a physician/APN/PA document presence of severe sepsis?  
1. Yes  
2. No

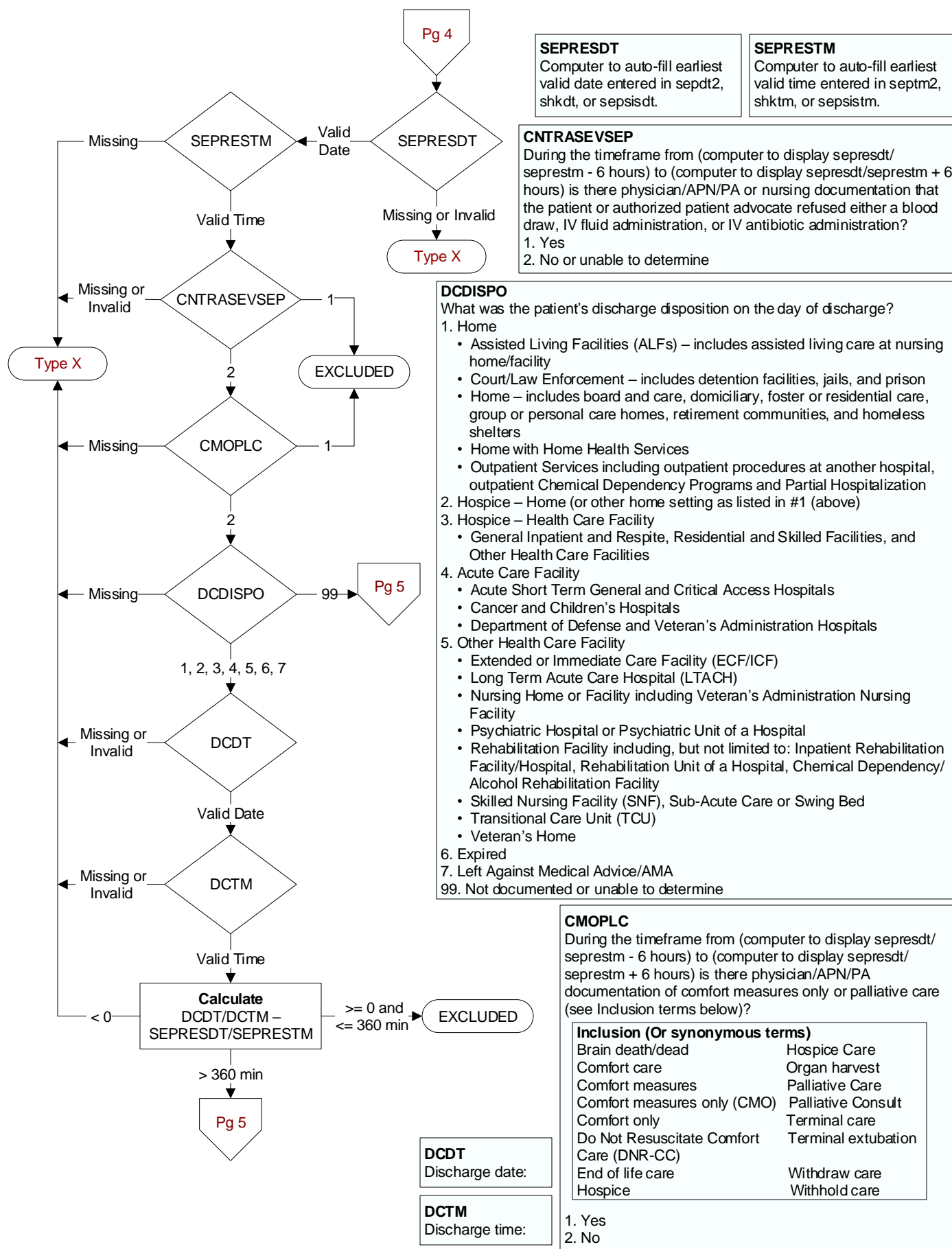
**SEPDT2 / SEPTM2**  
Enter the earliest date and time a physician/APN/PA documented the presence of severe sepsis

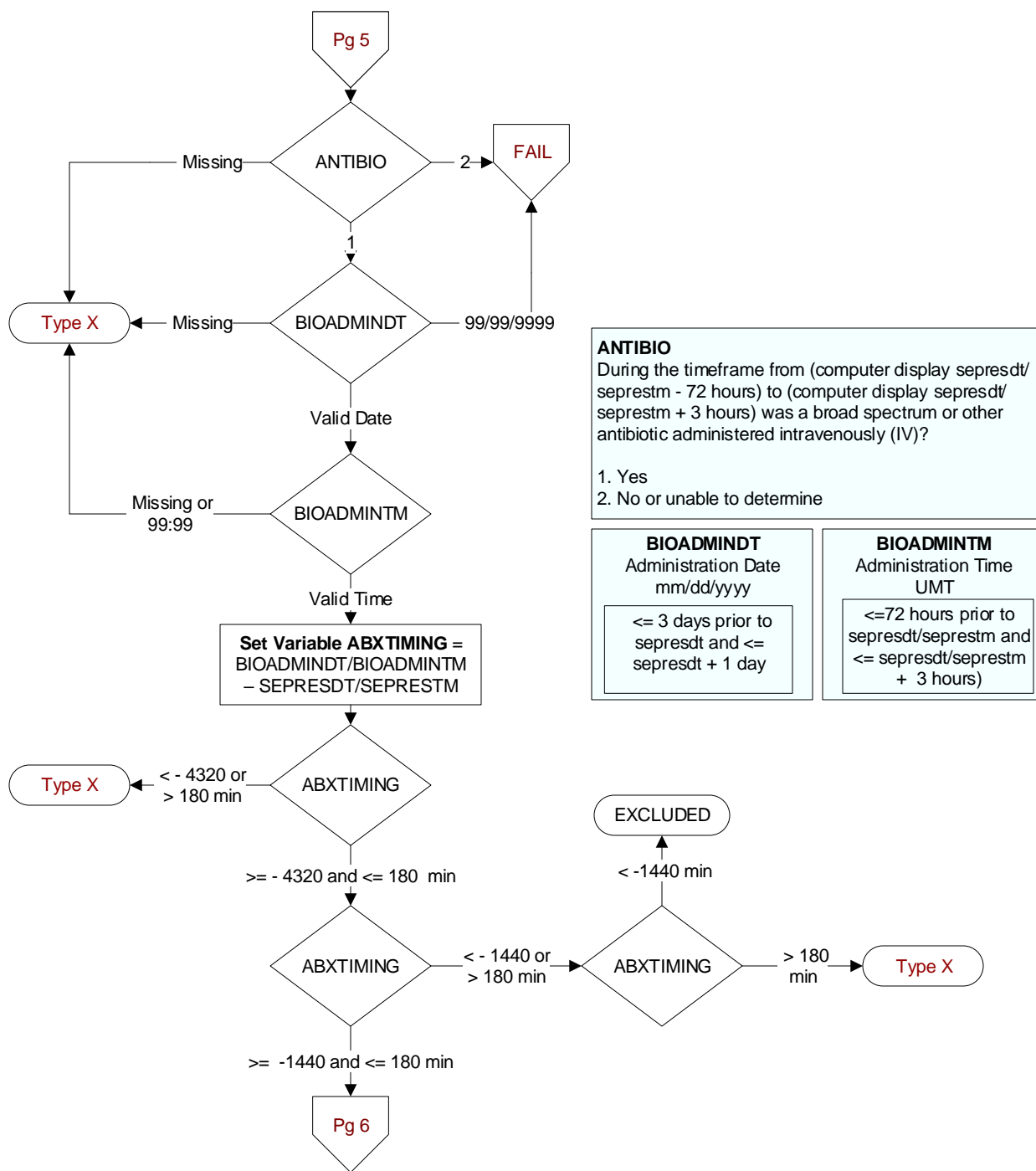
**SHKPRES**  
Is documentation of septic shock present in the record?  
1. Yes  
2. No, or unable to determine

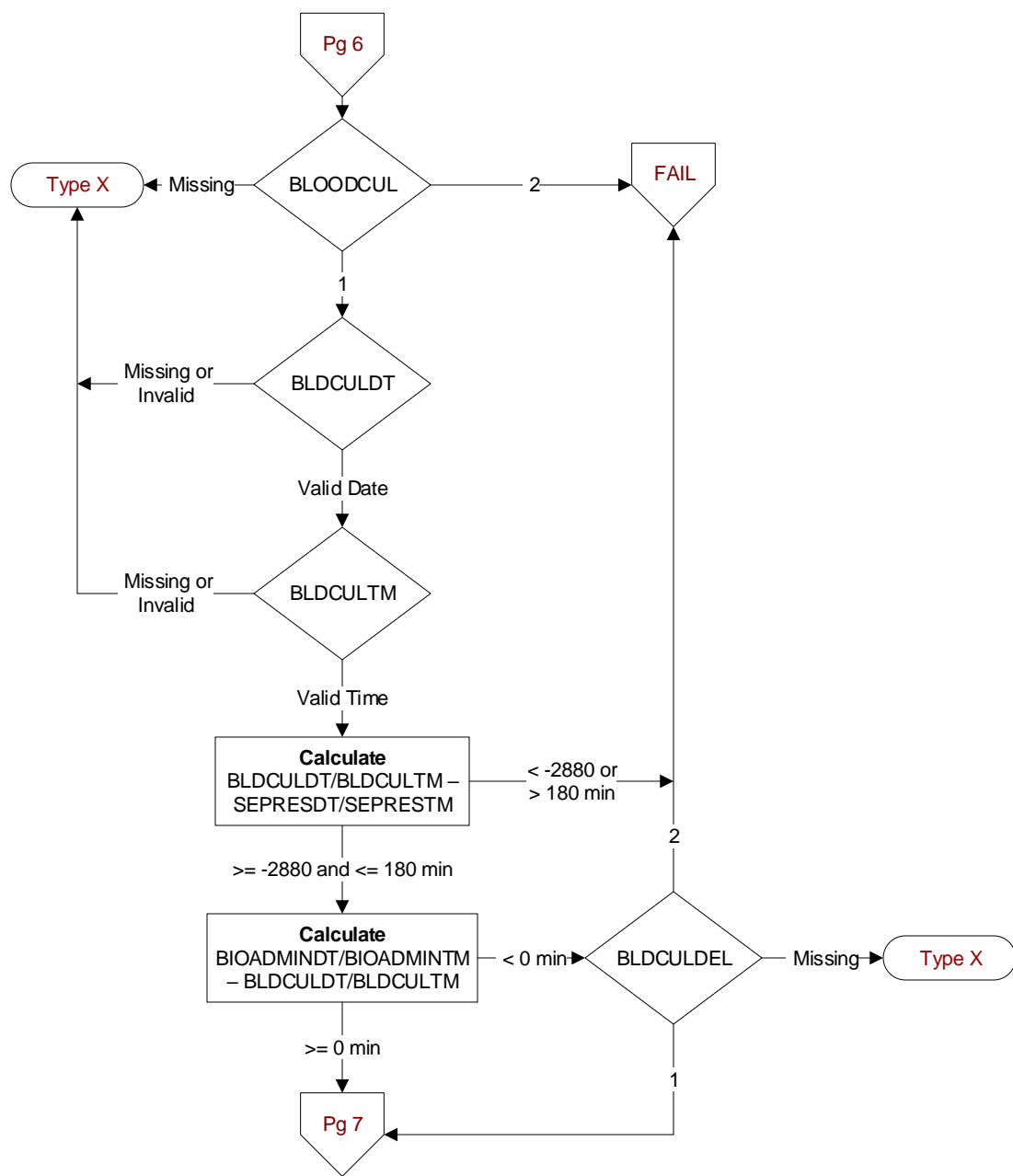
**SHKDT / SHKTM**  
Enter the earliest date and time a physician/APN/PA of the documented the presence of septic shock.











#### BLOODCUL

During the time frame from [(If bioadmintm/ bioadmintm - sepresdt/seprestm >= -1440 and < 0, computer to display sepresdt/ seprestm - 48 hours to sepresdt/seprestm + 3 hours); else computer to display (earliest bioadmintm/ bioadmintm- 24 hours to sepresdt/ seprestm + 3 hours)], was a blood culture collected?

1. Yes
2. No or unable to determine

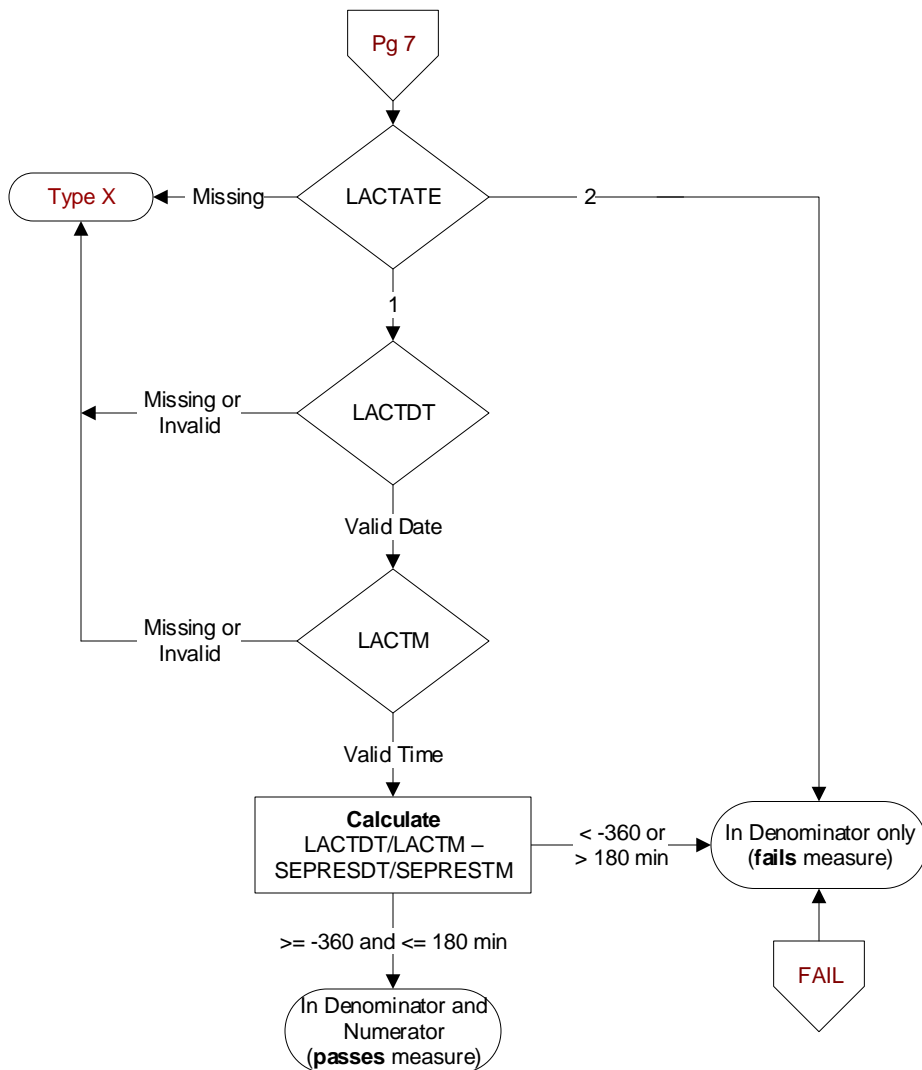
#### BLDCULDT / BLDCULTM

During the specified timeframe, enter the date and time the blood culture was collected.

#### BLDCULDEL

Is there documentation supporting an acceptable delay in collecting a blood culture?

1. Yes
2. No or unable to determine

**LACTATE**

During the timeframe from (computer display  
sepresdt/seprestm - 6 hours to sepresdt/seprestm +  
3 hours) was an initial lactate level drawn (or  
collected)?

1. Yes
2. No

**LACTDT / LACTM**

Enter the date and time the initial  
lactate level was drawn (or collected).