

Document Links:[HBPC Instrument](#)**COHORT**

69 – Home Based Primary Care

REVSTAT

REVIEW STATUS (not abstracted)

- 0. Abstraction has not begun
- 1. Abstraction in progress
- 2. Abstraction completed w/o errors
- 3. Cohort validation failure (exclusion)
- 4. Record contains missing data
- 5. Administrative Exclusion

HCSTATUS (HBPC)

Counting from the most recent HBPC encounter within the study interval, enter the patient's status in regard to HBPC admission:

- 2. HBPC admission greater than or equal to 30 days but less than or equal to 1 year
- 3. HBPC admission greater than one year from the most recent HBPC encounter.

INPTADM (HBPC)

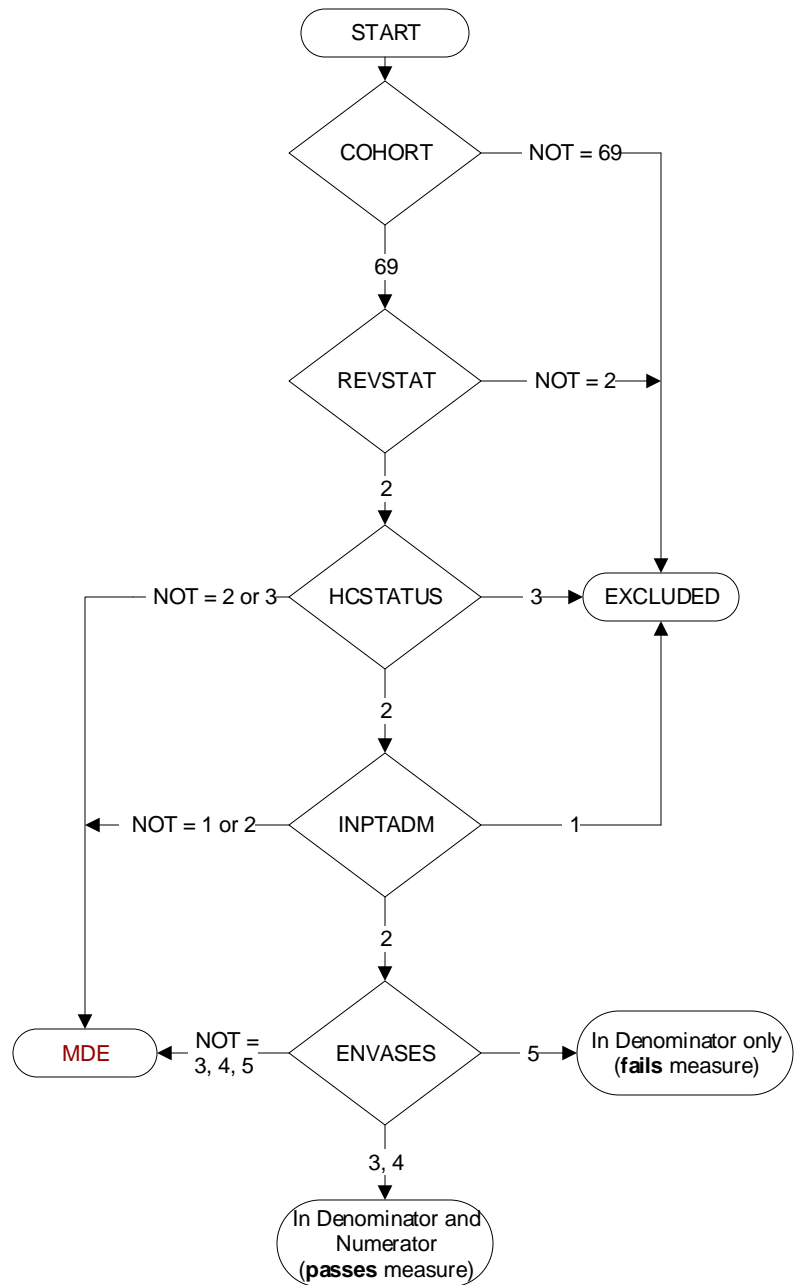
During the time frame from (computer display admisdt to admisdt + 30 days), did the record document the patient was admitted to an acute or non-acute inpatient facility?

- 1. Yes
- 2. No

ENVASES (HBPC)

During the time frame from (computer to display admisdt – 30 days to admisdt + 30 days), was a home environmental safety/ risk assessment documented by a rehabilitation therapist during a face-to-face OR a clinical video telehealth (CVT) encounter prior to 7/01/2023, or on or after 7/01/2023 if rural location?

- 3. Yes, a home environmental safety/ risk assessment was documented by a rehabilitation therapist during a **face-to-face encounter** in the patient's home
- 4. Yes, a home environmental safety/ risk assessment was documented by a rehabilitation therapist during a **CVT encounter prior to 7/01/2023, or on or after 7/01/2023 if rural location.**
- 5. No home environmental safety/ risk assessment was documented by a rehabilitation therapist during a face-to-face or CVT encounter



**MDE = Missing or
Invalid Data Exclusion
(data error)**