

**Document Links:**[HBPC Instrument](#)**COHORT**

69 – Home Based Primary Care

**REVSTAT**

REVIEW STATUS (not abstracted)

0. Abstraction has not begun
1. Abstraction in progress
2. Abstraction completed w/o errors
3. Cohort validation failure (exclusion)
4. Record contains missing data
5. Administrative Exclusion

**HCSTATUS (HBPC)**

Counting from the most recent HBPC encounter within the study interval, enter the patient's status in regard to HBPC admission:

2. HBPC admission greater than or equal to 30 days but less than or equal to 1 year
3. HBPC admission greater than one year from the most recent HBPC encounter.

**INPTADM (HBPC)**

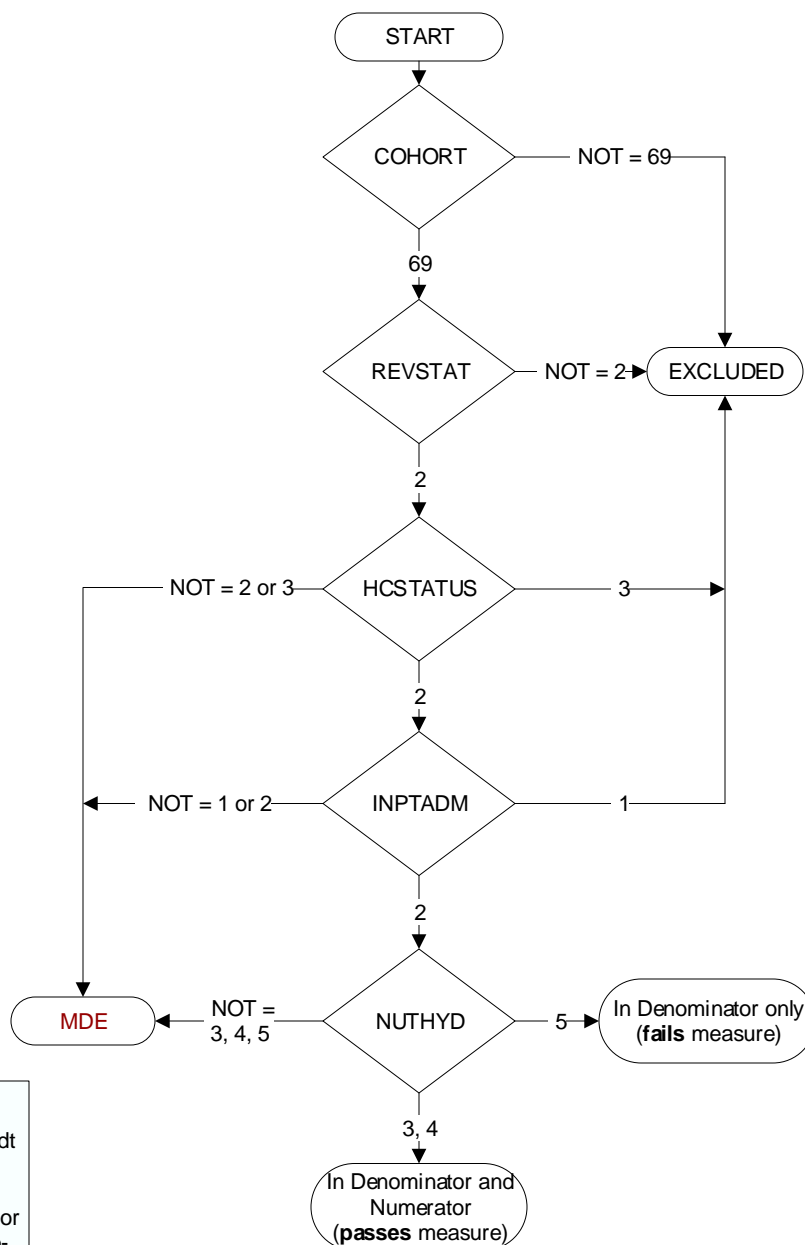
During the time frame from (computer display admisdtd to admisdtd + 30 days), did the record document the patient was admitted to an acute or non-acute inpatient facility?

1. Yes
2. No

**NUTHYD (HBPC)**

During the time frame from (computer to display admisdtd – 30 days to admisdtd + 30 days), does the record document assessment of the patient's nutritional and hydration needs by a HBPC Registered Dietician (RD) or Registered Dietician Nutritionist (RDN) during a face-to-face encounter in the Veteran's home OR a clinical video telehealth (CVT) encounter on or after 7/01/2023 if rural location?

3. Yes, assessment of patient's nutritional and hydration needs by a HBPC RD or RDN was documented during a **face-to-face encounter**.
4. Yes, assessment of patient's nutritional and hydration needs by a HBPC RD or RDN was documented during a **CVT encounter on or after 7/01/2023 if rural location**.
5. No assessment of the patient's nutritional and hydration needs was documented by a HBPC RD or RDN during a face-to-face or CVT encounter.



**MDE = Missing or  
Invalid Data Exclusion  
(data error)**