

**Document Links:**
[Cataract Surgery Instrument](#)
**REVSTAT**

REVIEW STATUS (not abstracted)

0. Abstraction has not begun
1. Abstraction in progress
2. Abstraction completed w/o errors
3. TVG failure (exclusion)
4. Record contains missing required answers
5. Administrative exclusion from all measures

**STDYBEG** (rcvd on pull list)

Begin date of study interval

**STDYEND** (rcvd on pull list)

End date of study interval

**CATSURDT**

Enter the date of the earliest cataract surgery performed by a VHA ophthalmologist representing this VAMC during the timeframe from (computer display stdybeg to stdyend).

**VISACUITY**

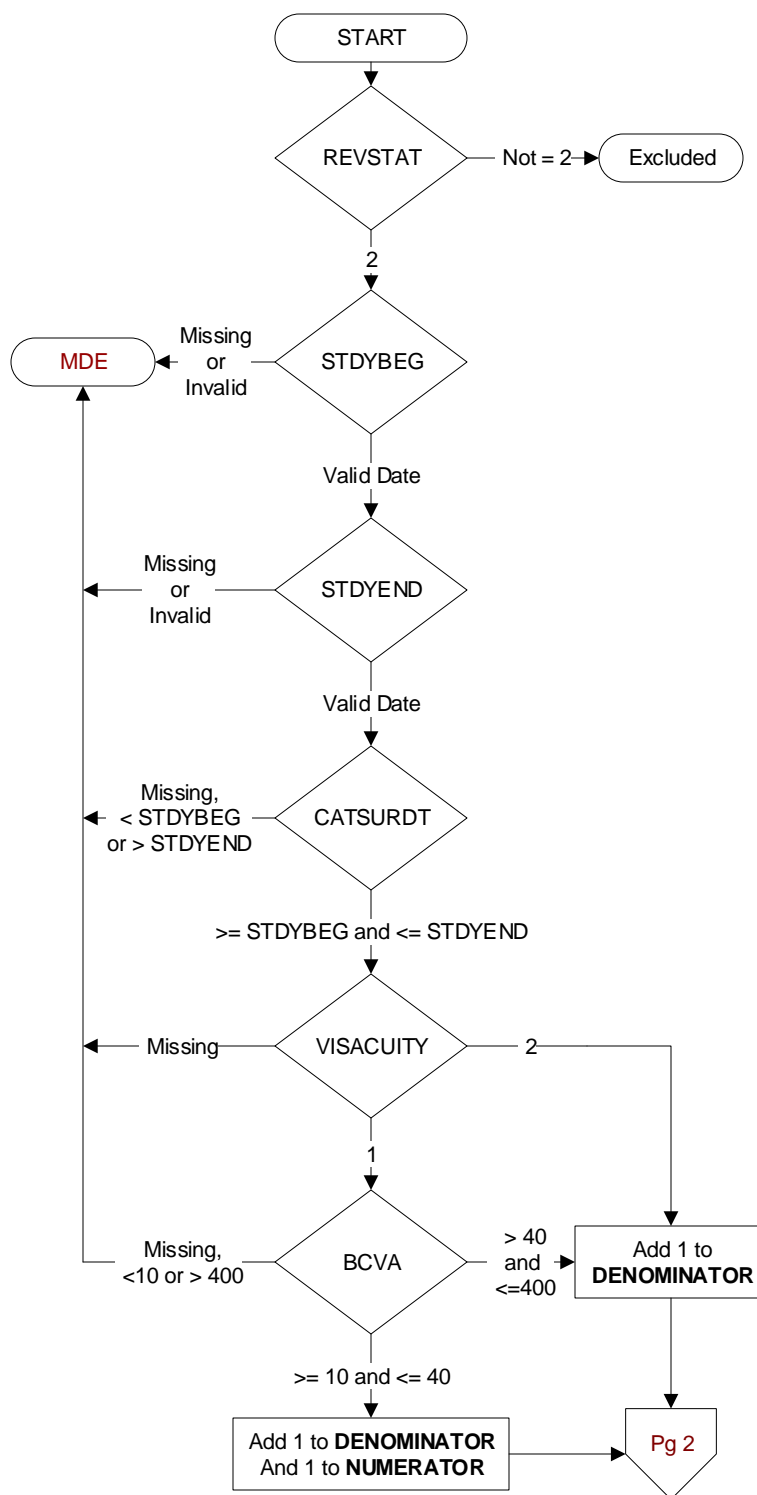
During the timeframe from (computer display catsurdt + 1 day to catsurdt + 90 days), did the ophthalmologist or optometrist document the patient's visual acuity?

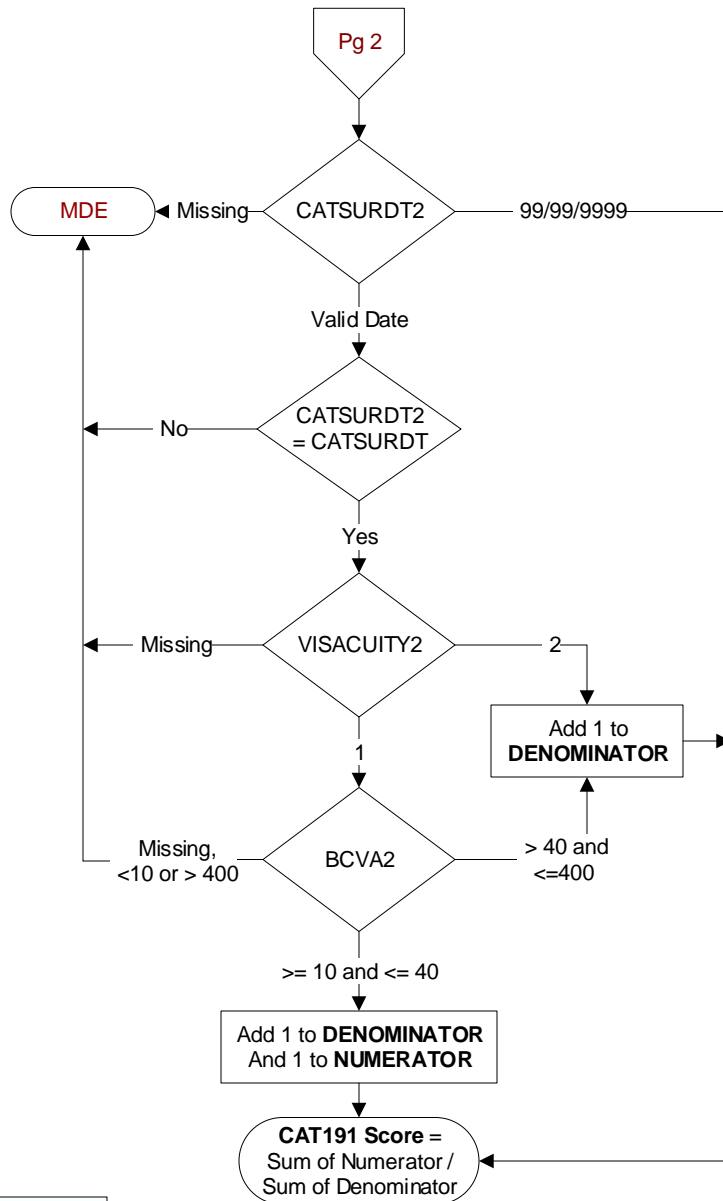
1. Yes
2. No

**BCVA**

During the timeframe from (computer display catsurdt + 1 day to catsurdt + 90 days), enter the best visual acuity documented for the eye on which cataract surgery was performed and the date.

**MDE = Missing or  
Invalid Data Exclusion  
(data error)**




**CATSURDT2**

Enter the date of the second cataract surgery performed by a VHA ophthalmologist representing this VAMC on (computer display catsurdt).

**VISACUITY2**

During the timeframe from (computer display catsurdt2 + 1 day to catsurdt2 + 90 days), did the ophthalmologist or optometrist document the patient's visual acuity?

1. Yes
2. No

**BCVA2**

During the timeframe from (computer display catsurdt + 1 day to catsurdt + 90 days), enter the best visual acuity documented for the eye on which cataract surgery was performed and the date.