

Document Links:[CGPI Validation Module](#)[CGPI OP Med Recon Module](#)**COHORT**

16. AMI - Outpatient visit
 48. Female, age 20-69
 50. Random Sample
 51. Random Sample MH
 54. Frail/Elderly
 60. DM Outpatient

REVSTAT

REVIEW STATUS (not abstracted)
 0. Abstraction has not begun
 1. Abstraction in progress
 2. Abstraction completed w/o errors
 3. TVG failure (exclusion)
 4. Record contains missing data
 5. Administrative exclusion

OTHCARE (CGPI Validation)

Is there evidence in the medical record that within the past two years, the patient refused VHA Primary Care and is receiving ONLY his/her primary care in a non-VHA setting?
 1. yes
 2. no

FEFLAG (rcvd on pull list)
 FE case flagged for CGPI review / scoring?
 0. No
 1. Yes

NEXUSPP (OP MRec)

Was the NEXUS clinic encounter on (if valnexus =1 then display pnexusdt, if 2 display nexusdt2) with a physician/APN/PA in a non-group setting?
 1. Yes
 2. No

OPTMED1-8 (OP MedRec)

During the most recent NEXUS encounter on (if valnexus =1 display pnexusdt; if 2 display nexusdt2), is there evidence in the medical record of a medication list documented as reviewed in the encounter note that included all of the following components?

Medication List Component**OPTMED1.** Active VA Prescriptions

1. Yes

2. No

OPTMED2. Remote Active VA Prescriptions

1. Yes

2. No

OPTMED3. Non-VA Medications

1. Yes

2. No

OPTMED4. Expired VA Prescriptions (see D/D rules)

1. Yes

2. No

OPTMED5. Discontinued VA Prescriptions (see D/D rules)

1. Yes

2. No

OPTMED6. Any Pending Medication Orders

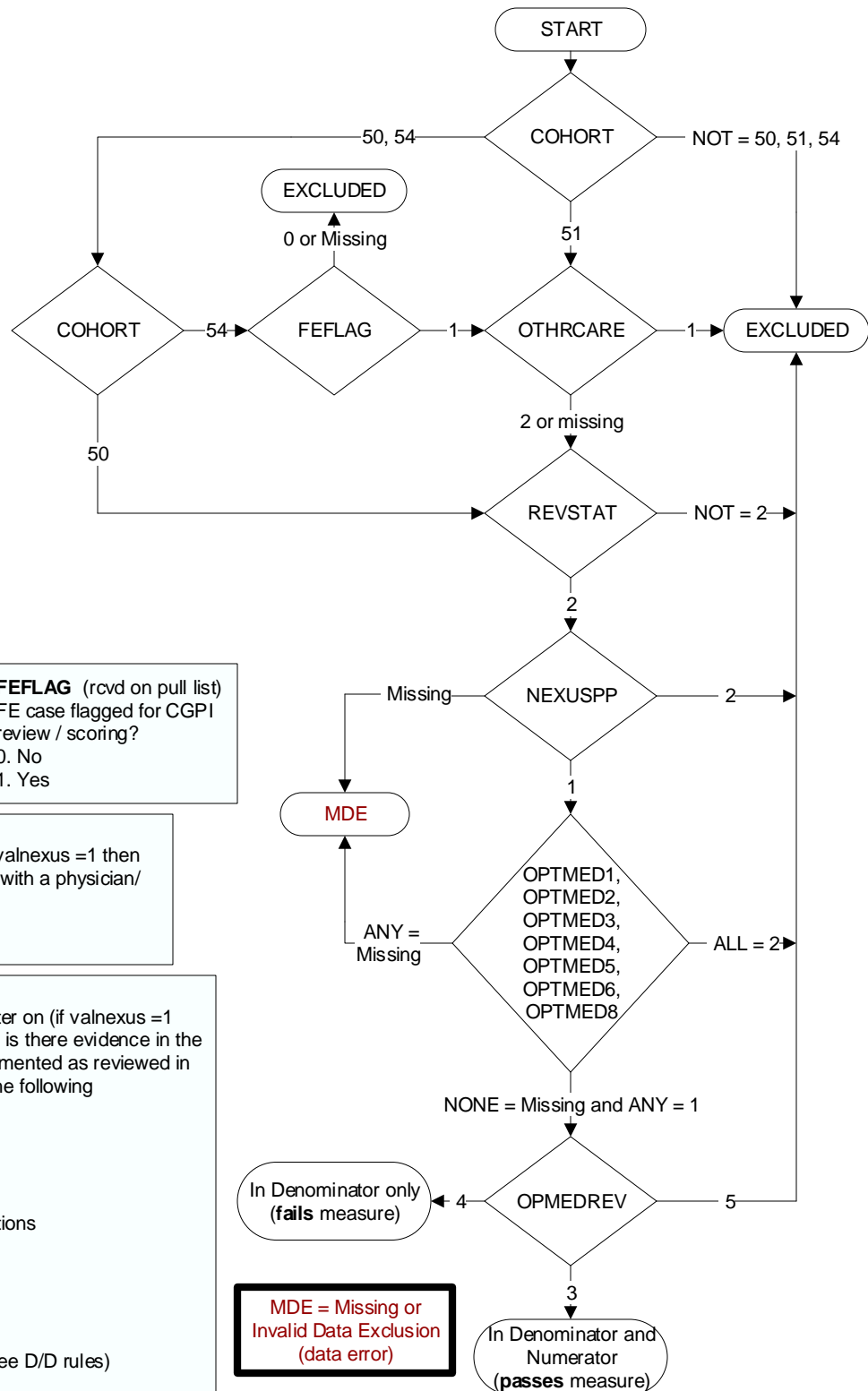
1. Yes

2. No

OPTMED8. Allergies (both Remote Facility **AND** Local Facility)

1. Yes

2. No



**MDE = Missing or
 Invalid Data Exclusion
 (data error)**

OPMEDREV (OP MedRec)

During the most recent NEXUS encounter on (if valnexus = 1 display pnexusdt; if 2 display nexusdt2), is there documentation the available medication list components were reviewed with the patient/caregiver?
 3. Yes
 4. No: There is no documentation that the available essential medication list components were reviewed with the patient/caregiver
 5. Documentation the patient/caregiver refused or was unable to participate in review of essential medication list components