

Document Links:[HBPC Instrument](#)**COHORT**

69 – Home Based Primary Care

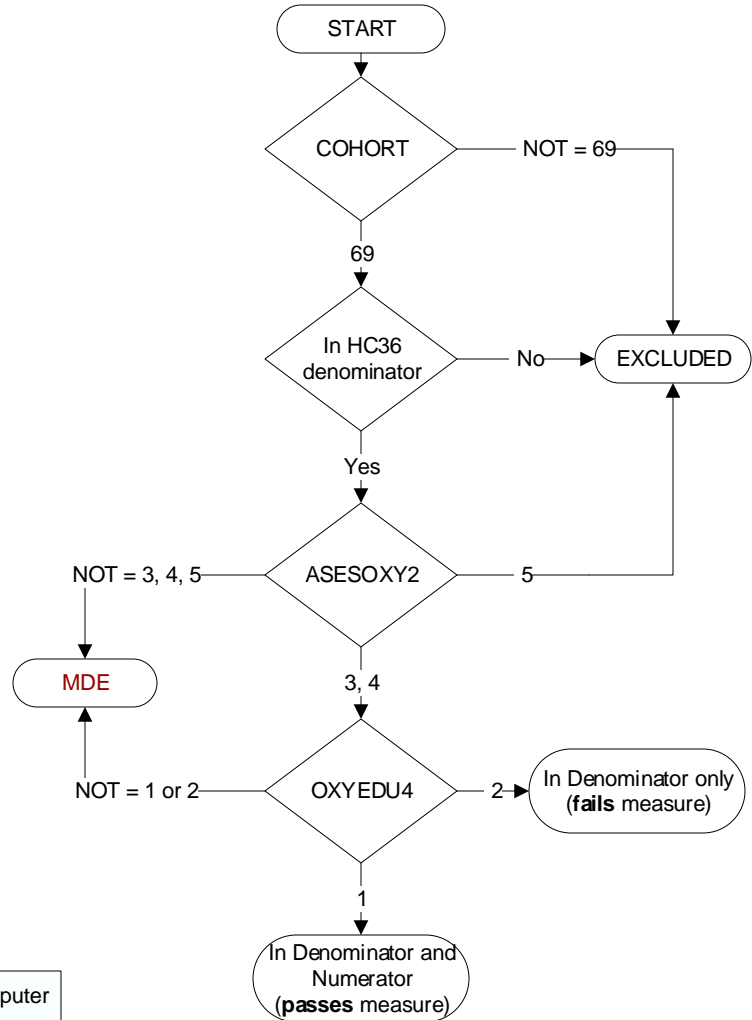
ASESOXY2 (HBPC)

During the time frame from (computer to display admisdt – 30 days to admisdt + 30 days) at a face-to-face encounter OR a CVT encounter prior to 7/01/2023, **or on or after 7/01/2023 if rural location**, was a home oxygen safety risk assessment documented by a HBPC team member to include all of the following components?

- Whether there are smoking materials in the home,
 - Whether or not the home has functioning smoke detectors, and
 - Whether there are other fire safety risks in the home, such as the potential for open flames
3. Yes, a home oxygen safety risk assessment including all components above was documented by a HBPC team member during a **face-to-face encounter** in the patient's home
 4. Yes, a home oxygen safety risk assessment including all components above was documented by a HBPC team member during a CVT encounter prior to 7/01/2023, **or on or after 7/01/2023 if rural location**.
 5. No home oxygen safety risk assessment was documented by a HBPC team member during a face-to-face or CVT encounter

During the HBPC team face-to-face or CVT encounter on (computer to display asesoxydt), did the HBPC team member inform and educate the patient/caregiver on home oxygen safety to include:

- OXYEDU1.** The findings of the oxygen safety risk assessment
1. Yes
 2. No
- OXYEDU2.** The causes of fire
1. Yes
 2. No
- OXYEDU3.** Fire risks for neighboring residences and buildings
1. Yes
 2. No
- OXYEDU4.** Precautions that can prevent fire-related injuries
1. Yes
 2. No



MDE = Missing or Invalid Data Exclusion (data error)