

Document Links:[CGPI Validation Module](#)[CGPI CVD Module](#)[CGPI Shared Module](#)**COHORT**

16. AMI - Outpatient visit
 48. Female, age 20-69
 50. Random Sample
 51. Random Sample MH
 54. Frail/Elderly
 60. DM Outpatient

FEFLAG (rcvd on pull list)

FE case flagged for CGPI review / scoring?

0. No
 1. Yes

OTHCARE (Validation)

Is there evidence in the medical record that within the past two years, the patient refused VHA Primary Care and is receiving ONLY his/her primary care in a non-VHA setting?

1. yes
 2. no

REVSTAT

REVIEW STATUS (not abstracted)

0. Abstraction has not begun
 1. Abstraction in progress
 2. Abstraction completed w/o errors
 3. TVG failure (exclusion)
 4. Record contains missing data
 5. Administrative exclusion from all measures

HOSPICE (Validation)

During the past year is there documentation in the medical record the patient is enrolled in a VHA or community-based hospice program?

1. Yes
 2. No

SELCHF (Validation)

Did the patient have one or more of the following active diagnoses?

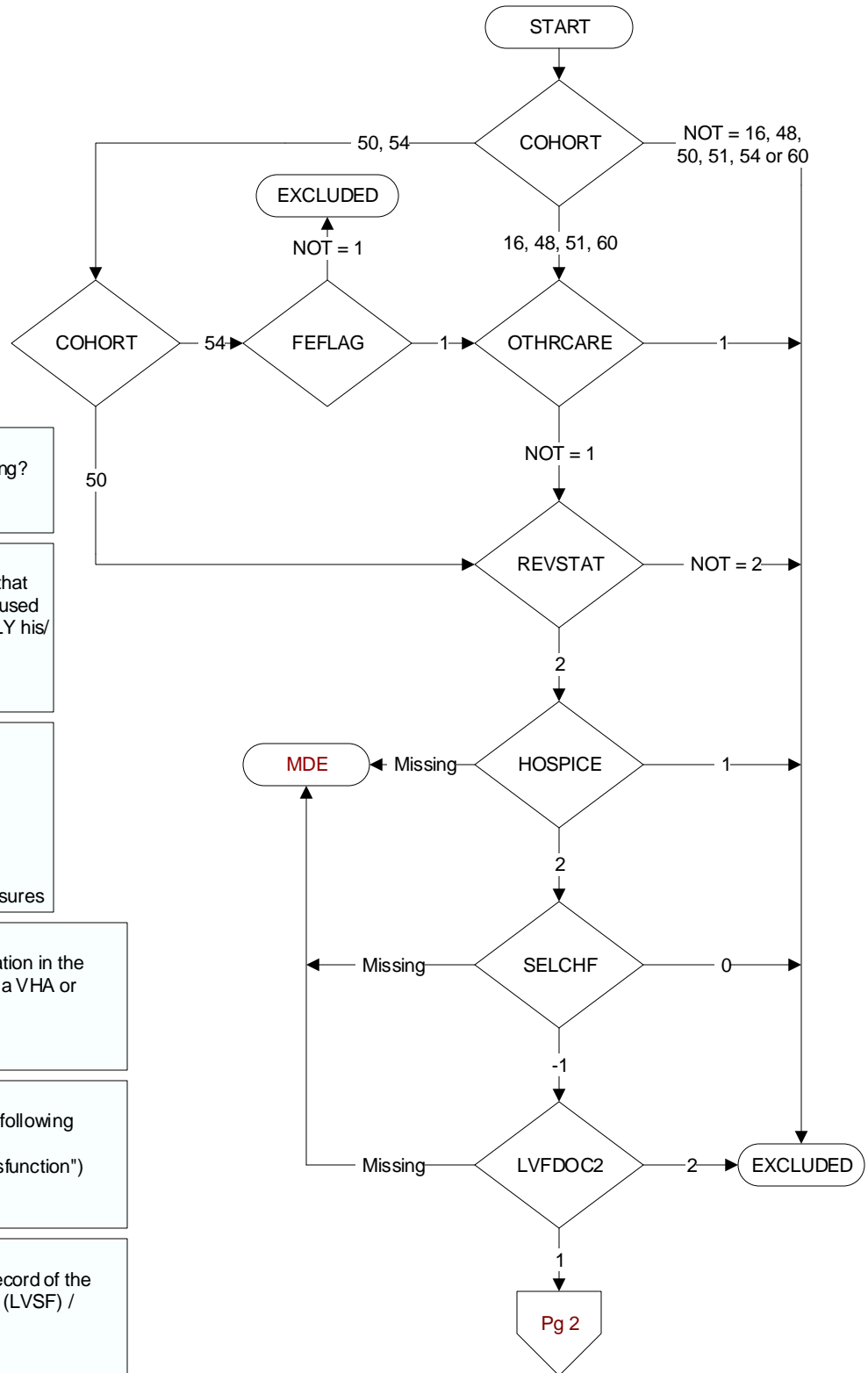
CHF (May also be noted as "systolic dysfunction")
 -1 = Yes
 0 = No

LVFDOC2 (CVD module)

Is there documentation in the medical record of the patient's left ventricular systolic function (LVSF) / ejection fraction (EF)?

1. Yes
 2. No

MDE = Missing or
 Invalid Data Exclusion
 (data error)



LVEFIND (CVD module)

Is the most recent left ventricular systolic function documented either as an ejection fraction (EF) less than 40% or narrative description consistent with moderate or severe systolic dysfunction (LVSD)?

1. Yes
2. No

ACEINOT (Shared)

At the most recent outpatient visit, was an angiotensin converting enzyme inhibitor (ACEI) included in the patient's current medications?

Examples of ACEI medications include, but are not limited to:

- Benazepril hydrochloride
- Enalapril maleate
- Captopril
- Fosinopril sodium
- Lisinopril
- Moexipril hydrochloride
- Perindopril erbumine
- Quinapril
- Ramipril
- Trandolapril
- Combinations of ACEI with hydrochlorothiazide

1. Yes
2. No

ACEINOT (Shared)

Does the record document any of the following reasons for not prescribing an ACEI?

1. ACEI allergy
5. Moderate or severe aortic stenosis
95. Not applicable
97. Other reasons documented by a physician/APN/PA or pharmacist for not prescribing an ACEI
98. Patient refusal of ACE inhibitors documented by physician/APN/PA or pharmacist
99. No documented reason

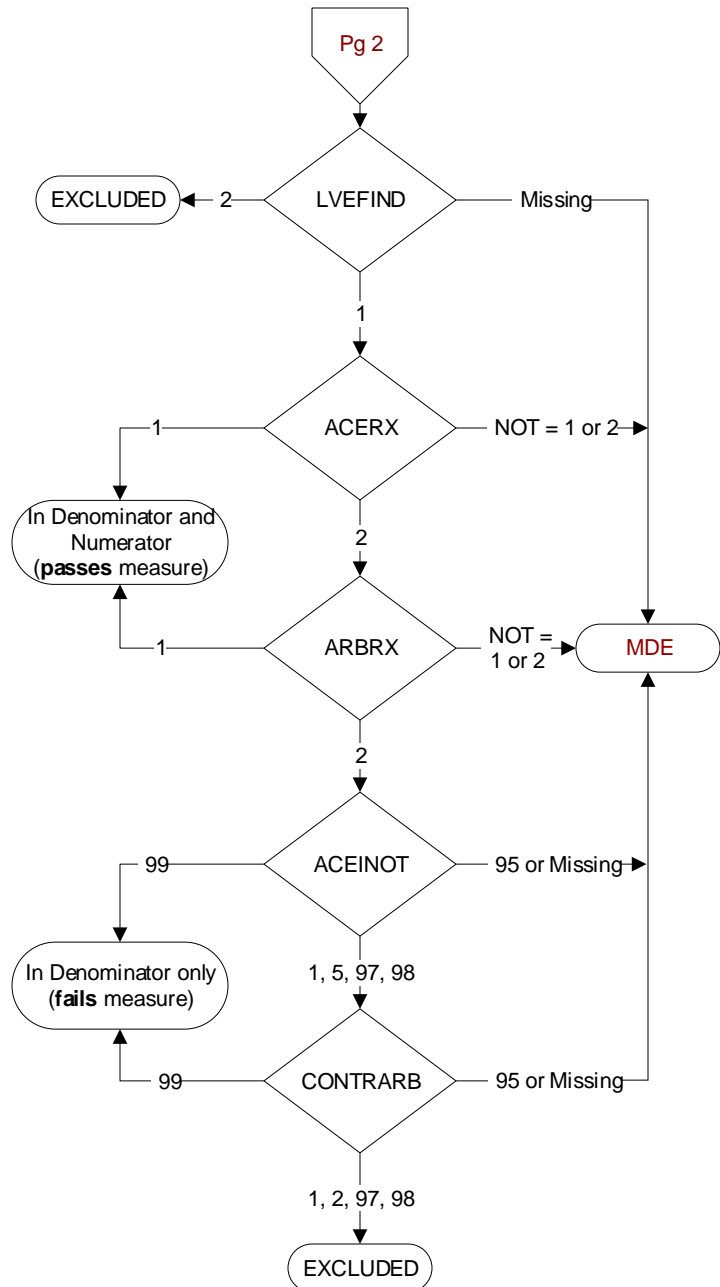
ARBRX (Shared)

At the most recent outpatient visit, was an angiotensin II receptor antagonist (ARB or AIIRA or ARNI) included in the patient's current medications?

Examples of ARB medications include, but are not limited to:

- Azilsartan medoxomil
- Candesartan cilexetil
- Eprosartan
- Irbesartan
- Losartan potassium
- Olmesartan medoxomil
- Telmisartan
- Valsartan
- Sacubitril/Valsartan
- Combinations of ARB with hydrochlorothiazide

1. Yes
2. No
95. Not applicable

**CONTRARB** (Shared)

Does the record document any of the following reasons for not prescribing an ARB?

1. ARB (AIIRA) allergy or sensitivity
2. Moderate or severe aortic stenosis
95. Not applicable
97. Other reasons documented by a physician, APN, PA, or pharmacist for not prescribing an ARB
98. Patient refusal of ARBs documented by physician/APN/PA or pharmacist
99. No documented reason