

**Document Links:**[CGPI Validation Module](#)[CGPI PI Module](#)**COHORT**

16. AMI - Outpatient visit  
 48. Female, age 20-69  
 50. Random Sample  
 51. Random Sample MH  
 54. Frail/Elderly  
 60. DM Outpatient

**FEFLAG** (rcvd on pull list)  
FE case flagged for CGPI review / scoring?

0. No  
 1. Yes

**OTHCARE** (Validation)

Is there evidence in the medical record that within the past two years, the patient refused VHA Primary Care and is receiving ONLY his/her primary care in a non-VHA setting?

1. yes  
 2. no

**REVSTAT**

REVIEW STATUS (not abstracted)

0. Abstraction has not begun  
 1. Abstraction in progress  
 2. Abstraction completed w/o errors  
 3. TVG failure (exclusion)  
 4. Record contains missing required answers  
 5. Administrative exclusion from all measures

**HOSPICE** (Validation)

During the past year is there documentation in the medical record the patient is enrolled in a VHA or community-based hospice program?

1. Yes  
 2. No

**CERNER** (system flag)

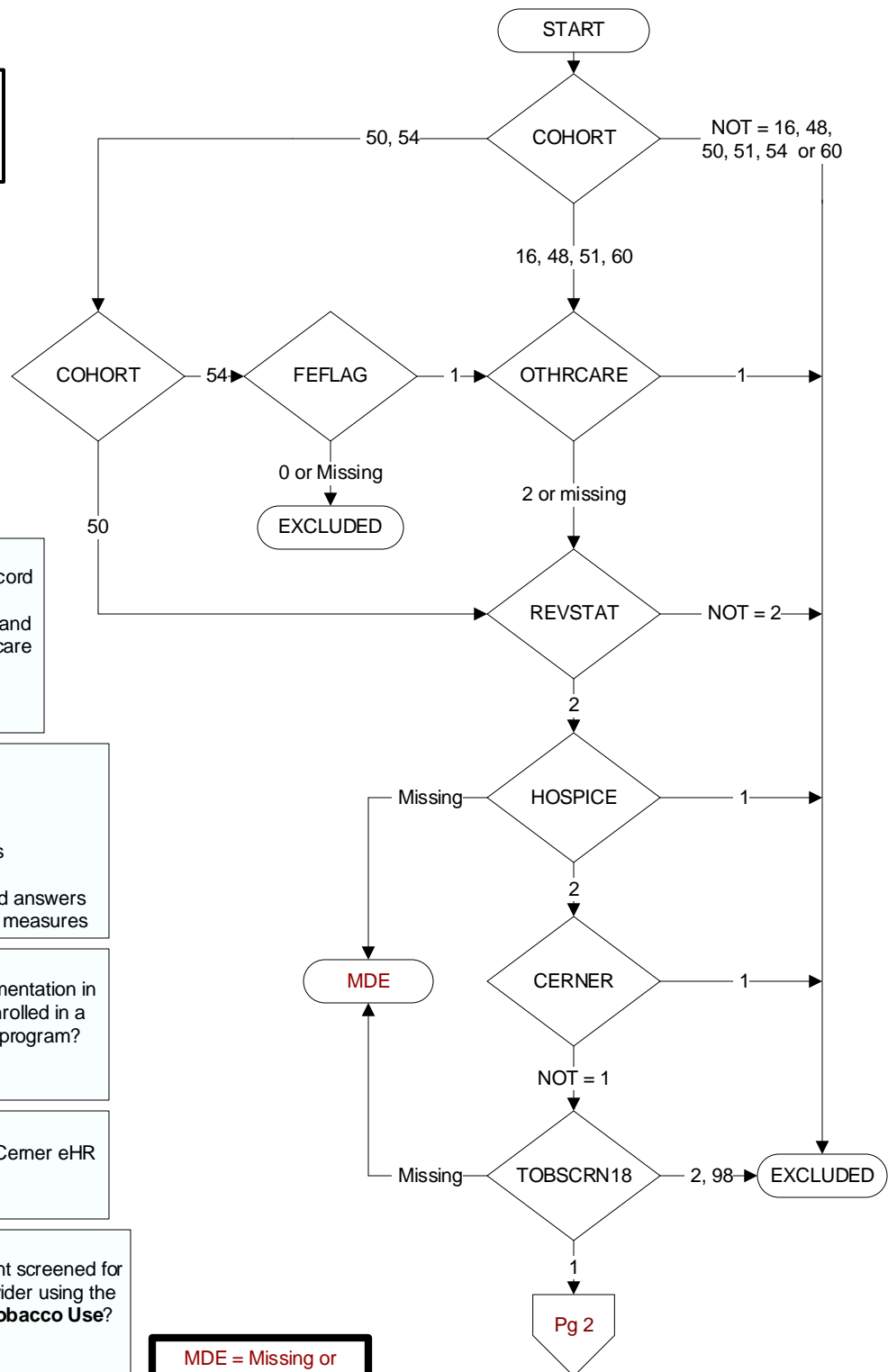
Flag indicating facility is using the Cerner eHR  
 1 = flagged  
 0 = not flagged

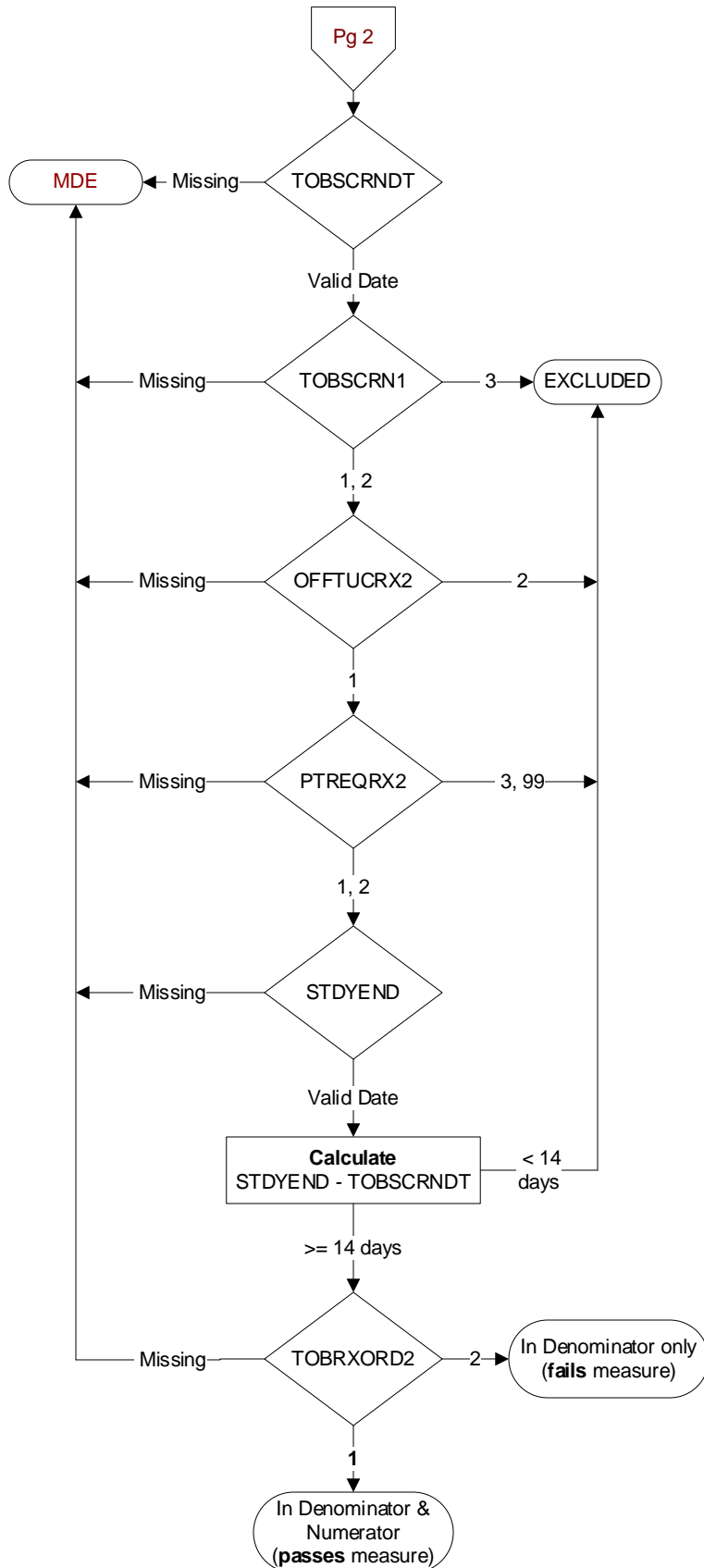
**TOBSCRN18** (PI)

During the past year was the patient screened for tobacco use by an acceptable provider using the **National Clinical Reminder for Tobacco Use?**

1. Yes  
 2. No  
 98. Patient declined to answer National Clinical Reminder for Tobacco Use screening questions

**MDE = Missing or  
 Invalid Data Exclusion  
 (data error)**



**TOBSCRNDT (PI)**

Enter the date of the most recent tobacco use screening by an acceptable provider using the National Clinical Reminder for Tobacco Use.

**TOBSCRN1 (PI)**

Enter the response to Tobacco Use Screening question #1 "Do you smoke cigarettes, or use tobacco every day, some days, or not at all?"

1. Every Day
2. Some Days
3. Not at all

**OFFTUCRX2 (PI)**

During the past year, was the patient offered FDA approved medications by a provider to assist in tobacco use cessation using the National Clinical Reminder for Tobacco Use?

1. Yes
2. No

**PTREQRX2 (PI)**

During the past year, did the provider document the patient was interested in a prescription for tobacco cessation medications?

1. Yes, patient is interested in a prescription for tobacco cessation medications
2. Yes, "non-prescribing provider" notified prescribing provider of patient's interest in a prescription for tobacco cessation medications
3. No, documented patient was not interested in a prescription for tobacco cessation medications
99. No documentation if the patient was or was not interested in a prescription for tobacco cessation medications

**STDYEND (rcvd on pull list)**

Sample study interval end date

**TOBRXORD2 (PI)**

During the time frame from (computer to display tobscrndt - 90 days to tobscrndt + 14 days) was an FDA approved medication for tobacco cessation ordered/prescribed or dispensed for the patient?

1. Yes
2. No