

Document Links:[Sepsis Instrument](#)**REVSTAT**

REVIEW STATUS (not abstracted)

- 0. Abstraction has not begun
- 1. Abstraction in progress
- 2. Abstraction completed w/o errors
- 3. Cohort validation failure (exclusion)
- 4. Record contains missing data
- 5. Administrative exclusion from all measures

AGE

Calculated field – ADMDT - BIRTHDT

DCDT

Discharge date

LACTATE

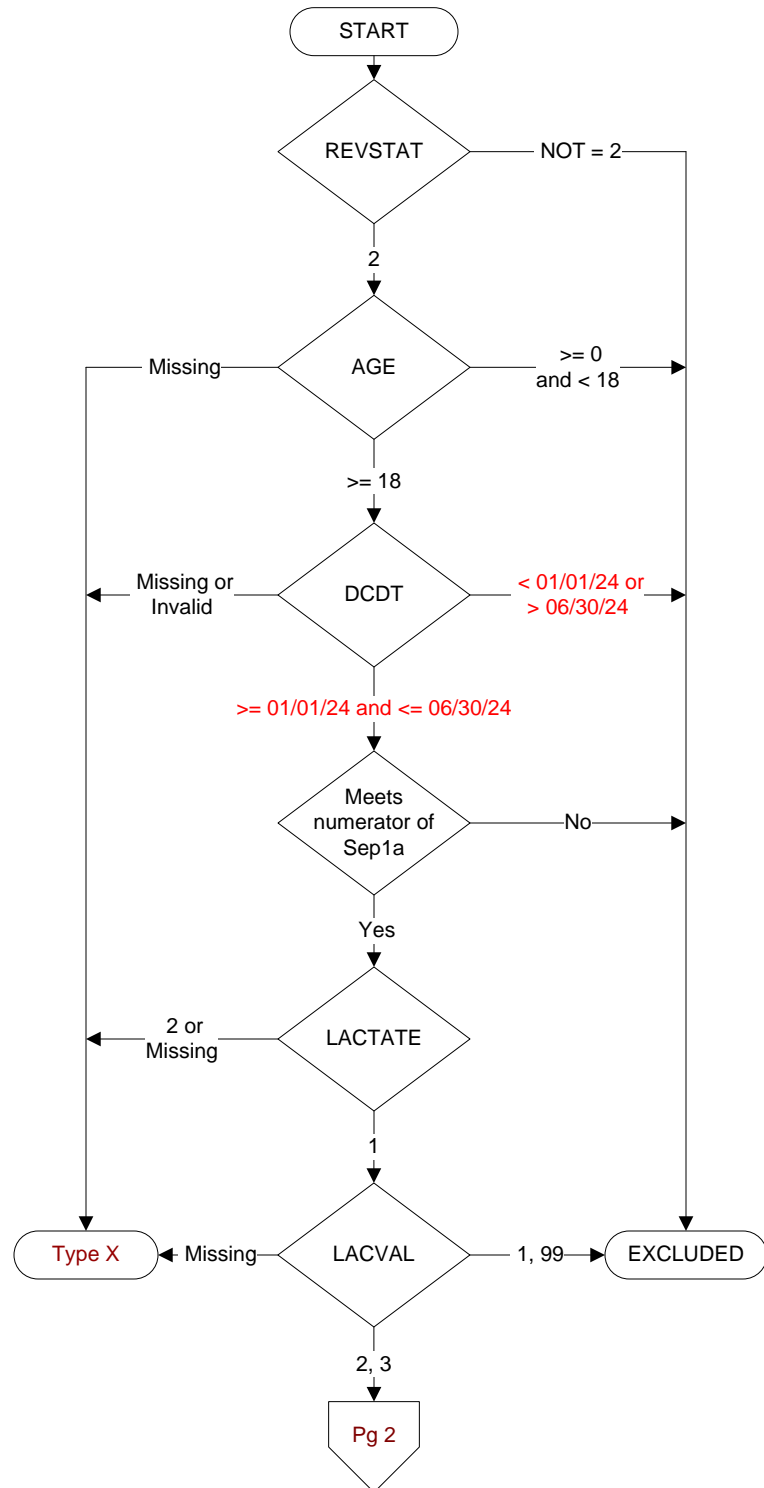
During the timeframe from (computer display sepresdt/seprestm - 6 hours to sepresdt/seprestm + 3 hours) was an initial lactate level drawn (or collected)?

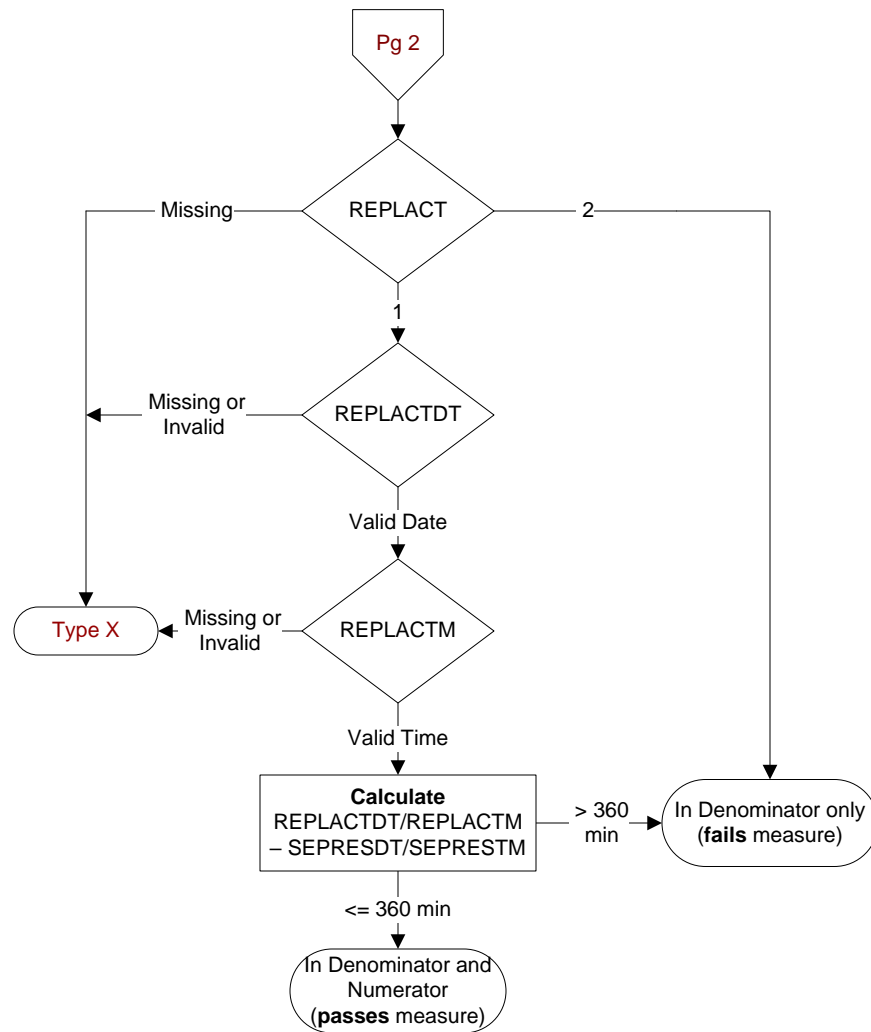
- 1. Yes
- 2. No

LACVAL

What initial lactate level result was documented in the record?

- 1. ≤ 2 mmol/L (less than or equal to 2 mmol/L)
- 2. > 2 and < 4.0 mmol/L (greater than 2 mmol/L and less than 4 mmol/L)
- 3. ≥ 4 mmol/L (4 mmol/L or greater)
- 99. Initial lactate result was not documented or unable to determine result



**REPLACT**

During the timeframe from (computer display
sepresdt/seprestm to sepresdt/seprestm +6
hours) was a repeat lactate level drawn?

1. Yes
2. No

REPLACTDT / REPLACTM

During the timeframe from (computer to
display lacdt/lactm to sepresdt/seprestm + 6
hours), enter the earliest date and time the
repeat lactate level was drawn (or collected).

SEPRESDT

Computer to auto-fill earliest
valid date entered in sepdt2,
shkdt, or sepsisdtd.

SEPRESTM

Computer to auto-fill earliest
valid time entered in septm2,
shktm, or sepsistm.