

Document Links:[HBPC Instrument](#)**REVSTAT**

REVIEW STATUS (not abstracted)

0. Abstraction has not begun
1. Abstraction in progress
2. Abstraction completed w/o errors
3. Cohort validation failure (exclusion)
4. Record contains missing data
5. Administrative Exclusion

COHORT

69 – Home Based Primary Care

HCSTATUS (HBPC)

Counting from the most recent HBPC encounter within the study interval, enter the patient's status in regard to HBPC admission:

2. HBPC admission greater than or equal to 30 days but less than or equal to 1 year
3. HBPC admission greater than one year (>365 days from the admission date)

INPTADM (HBPC)

During the time frame from (computer display admisdt to admisdt + 30 days), did the record document the patient was admitted to an acute or non-acute inpatient facility?

1. Yes
2. No

HOSPICE

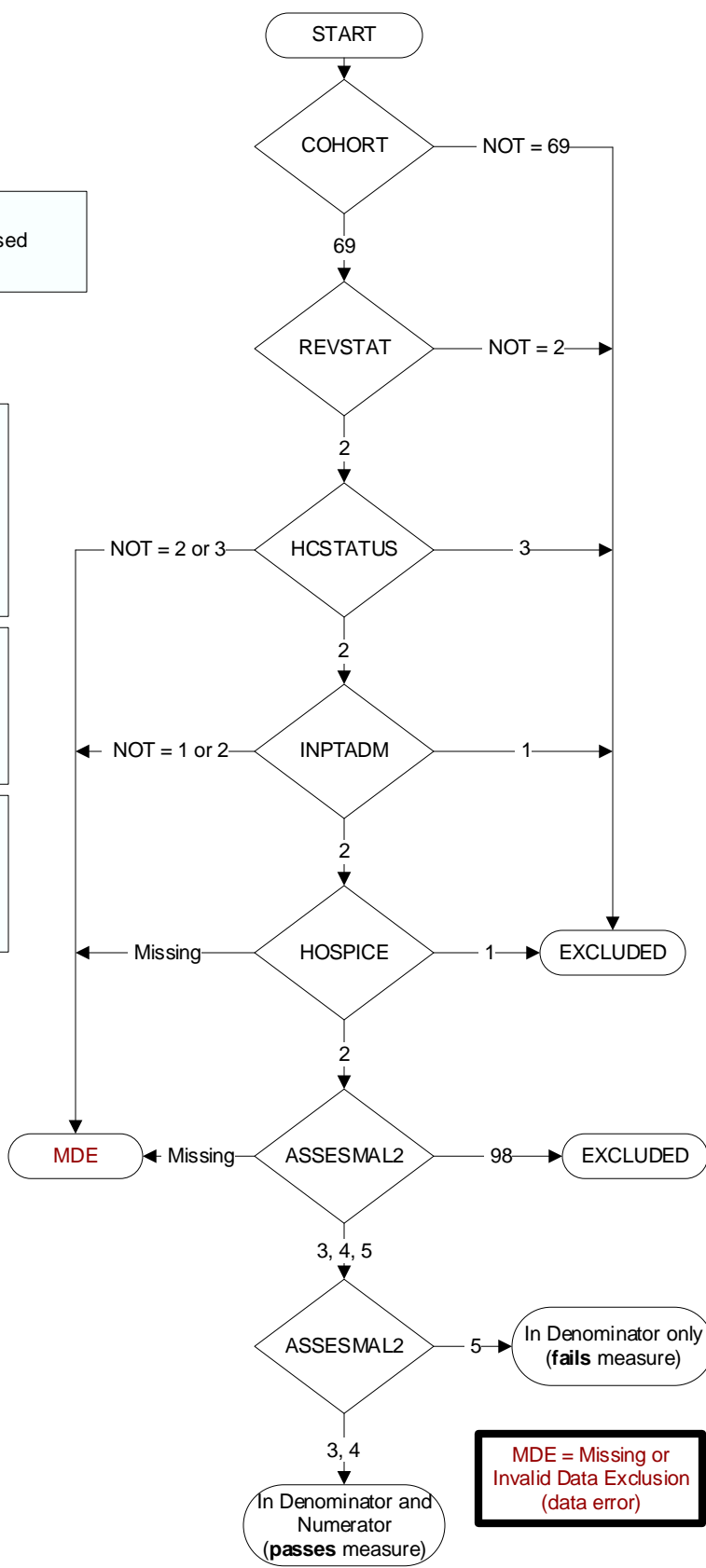
During the past year, is there documentation in the medical record the patient is enrolled in a VHA or community-based hospice program?

1. Yes
2. No

ASSESMA2 (HBPC)

During the time frame from (if nuthyd = 5, computer display (admisdt – 30 days to admisdt + 30 days); else display (On nuthydt), was an assessment for malnutrition completed by a HBPC Registered Dietitian (RD) or Registered Dietician Nutritionist (RDN) during the initial face-to-face encounter in the Veteran's home OR a clinical video telehealth (CVT) encounter prior to 7/01/2023, or on or after 7/01/2023 if rural location?

3. Yes, the HBPC RD or RDN initial nutrition assessment contains an assessment for malnutrition that was completed by a RD or RDN during the initial **face-to-face** encounter.
4. Yes, the HBPC RD or RDN initial nutrition assessment contains an assessment for malnutrition that was completed by a RD or RDN during the initial **CVT** encounter prior to 7/01/2023, or on or after 7/01/2023 if rural location.
5. No, the HBPC RD or RDN initial nutrition assessment does not contain an assessment for malnutrition completed by a RD or RDN during a face-to-face OR a CVT encounter.
98. No, an assessment for malnutrition was not completed by the HBPC RD or RDN and the initial nutrition assessment contains documentation that the patient/caregiver/guardian refused or declined to participate in the assessment for malnutrition.



MDE = Missing or Invalid Data Exclusion (data error)