

Document Links:[HBPC Instrument](#)**COHORT**

69 – Home Based Primary Care

ASESOXY2 (HBPC)

During the time frame from (computer to display admisdt – 30 days to admisdt + 30 days) at a face-to-face encounter OR a CVT encounter prior to 7/01/2023, **or on or after 7/01/2023 if rural location**, was a home oxygen safety risk assessment documented by a HBPC team member to include all of the following components?

- Whether there are smoking materials in the home,
- Whether or not the home has functioning smoke detectors, and
- Whether there are other fire safety risks in the home, such as the potential for open flames

3. Yes, a home oxygen safety risk assessment including all components above was documented by a HBPC team member during a **face-to-face encounter** in the patient's home
4. Yes, a home oxygen safety risk assessment including all components above was documented by a HBPC team member during a CVT encounter prior to 7/01/2023, **or on or after 7/01/2023 if rural location**.
5. No home oxygen safety risk assessment was documented by a HBPC team member during a face-to-face or CVT encounter

During the HBPC team face-to-face or CVT encounter on (computer to display asesoxdyt), did the HBPC team member inform and educate the patient/caregiver on home oxygen safety to include:

OXYEDU1. The findings of the oxygen safety risk assessment

1. Yes
2. No

OXYEDU2. The causes of fire

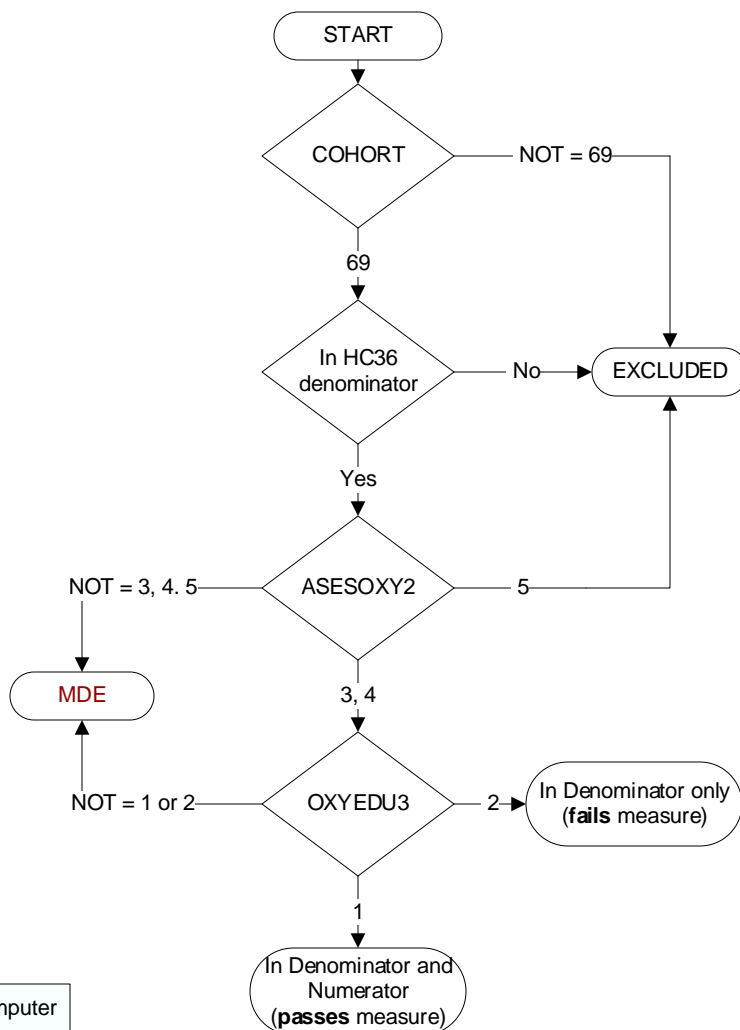
1. Yes
2. No

OXYEDU3. Fire risks for neighboring residences and buildings

1. Yes
2. No

OXYEDU4. Precautions that can prevent fire-related injuries

1. Yes
2. No



**MDE = Missing or
Invalid Data Exclusion
(data error)**