

Document Links:[Sepsis Instrument](#)**REVSTAT**

REVIEW STATUS (not abstracted)

0. Abstraction has not begun
1. Abstraction in progress
2. Abstraction completed w/o errors
3. Cohort validation failure (exclusion)
4. Record contains missing data
5. Administrative exclusion from all measures

AGE

Calculated field – ADMDT - BIRTHDT

DCDT

Discharge date

HYPOTNS

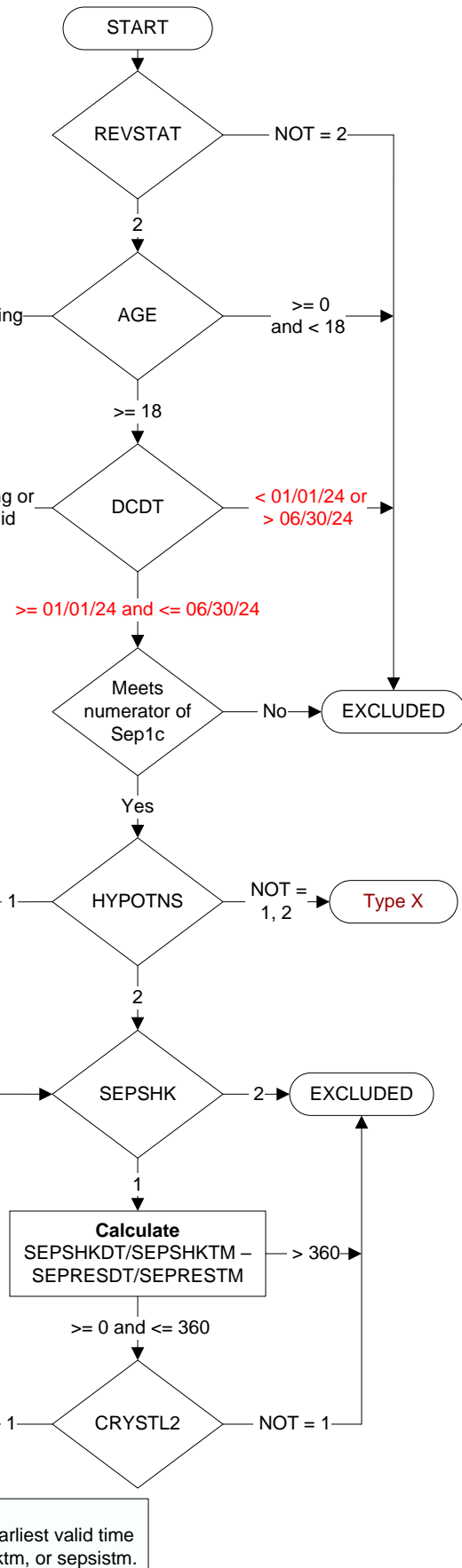
During the time frame from (computer to display sepresdt/sepستم - 6 hours) to (computer to display sepresdt/sepستم + 6 hours) is there documentation initial hypotension was present?
Criteria for determining initial hypotension:

- Two hypotensive blood pressure readings at different times
 - o systolic blood pressures <90, or
 - o mean arterial pressures (MAP), <65 or
 - o a decrease in systolic BP by >40 mm/Hg
1. Yes
 2. No or unable to determine

SEPSHK

Did a physician/APN/PA document presence of septic shock, severe sepsis with shock, or sepsis with shock?

1. Yes
2. No or unable to determine

**CRYSTL2**

During the timeframe from [(If hypotns = 1, and sepskh = 2, computer to display hypotnsdt/hypotnstm - 6 hours) to (hypotnsdt/hypotnstm + 3 hours) OR (If hypotns = 2 and sepskh = 1 computer to display sepskhdt/sepskhkm - 6 hours) to (sepskhdt/sepskhkm + 3 hours) OR (if hypotns = 1 and sepskh = 1, computer to display earliest of hypotnsdt/hypotnstm - 6 hrs) to (hypotnsdt/hypotnstm + 3 hours or sepskhdt/sepskhkm - 6 hours to sepskhdt/sepskhkm + 3 hours) were crystalloid fluids initiated?

1. Yes
2. No
4. There is documentation the patient has an implanted Ventricular Assist Device (VAD)
97. Documentation no fluids were ordered because the patient was not volume or fluid responsive by clinical evidence.
98. The patient or authorized patient advocate refused IV fluids.

SEPRESDT

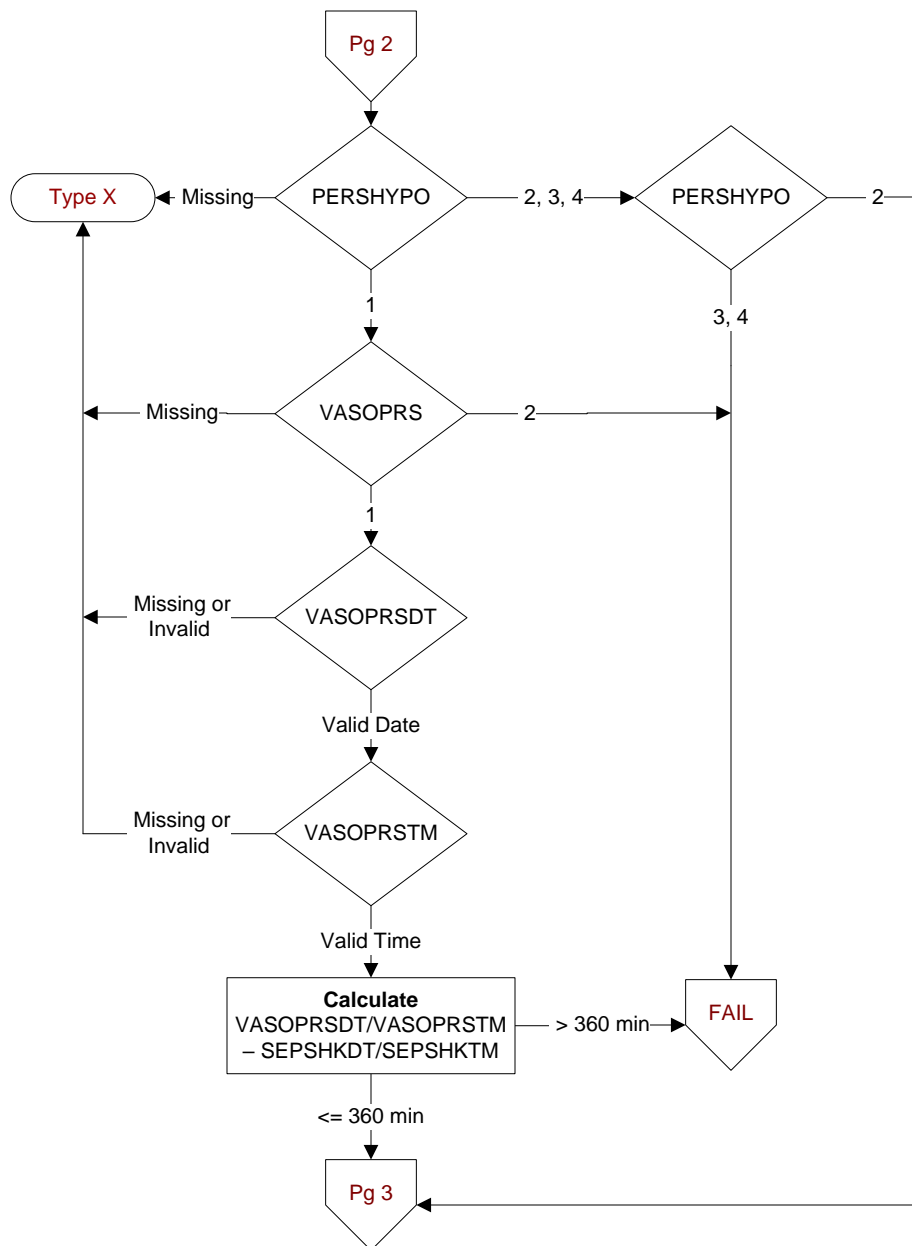
Computer to auto-fill earliest valid date entered in sepdt2, shkdt, or sepsisdt.

SEPSHKDT / SEPSHKTM

Enter the earliest date and time a physician/APN/PA documented the presence of septic shock OR the earliest date and time on which the final criterion was met to establish the presence of septic shock.

SEPستم

Computer to auto-fill earliest valid time entered in septm2, shktm, or sepsistm.

**PERSHYPO**

During the time frame from (computer display crystlendt at crystlntm) to (computer to display crystlntm + 1 hour) is there physician/APN/PA documentation that persistent hypotension or new onset of hypotension was present?

Criteria for determining persistent or new onset of hypotension:

- Two hypotensive blood pressure readings at different times within specified timeframe
 - o systolic blood pressures <90, or
 - o mean arterial pressures (MAP), <65 or
 - o a decrease in systolic BP by >40 mm/Hg

1. Yes
2. No or Unable to determine
3. No, the patient was not assessed for persistent hypotension or new onset of hypotension within one hour after the conclusion of crystalloid fluid administration at the target ordered volume.
4. Not applicable - Crystalloid fluids were administered but at a volume less than the target ordered volume

VASOPRS

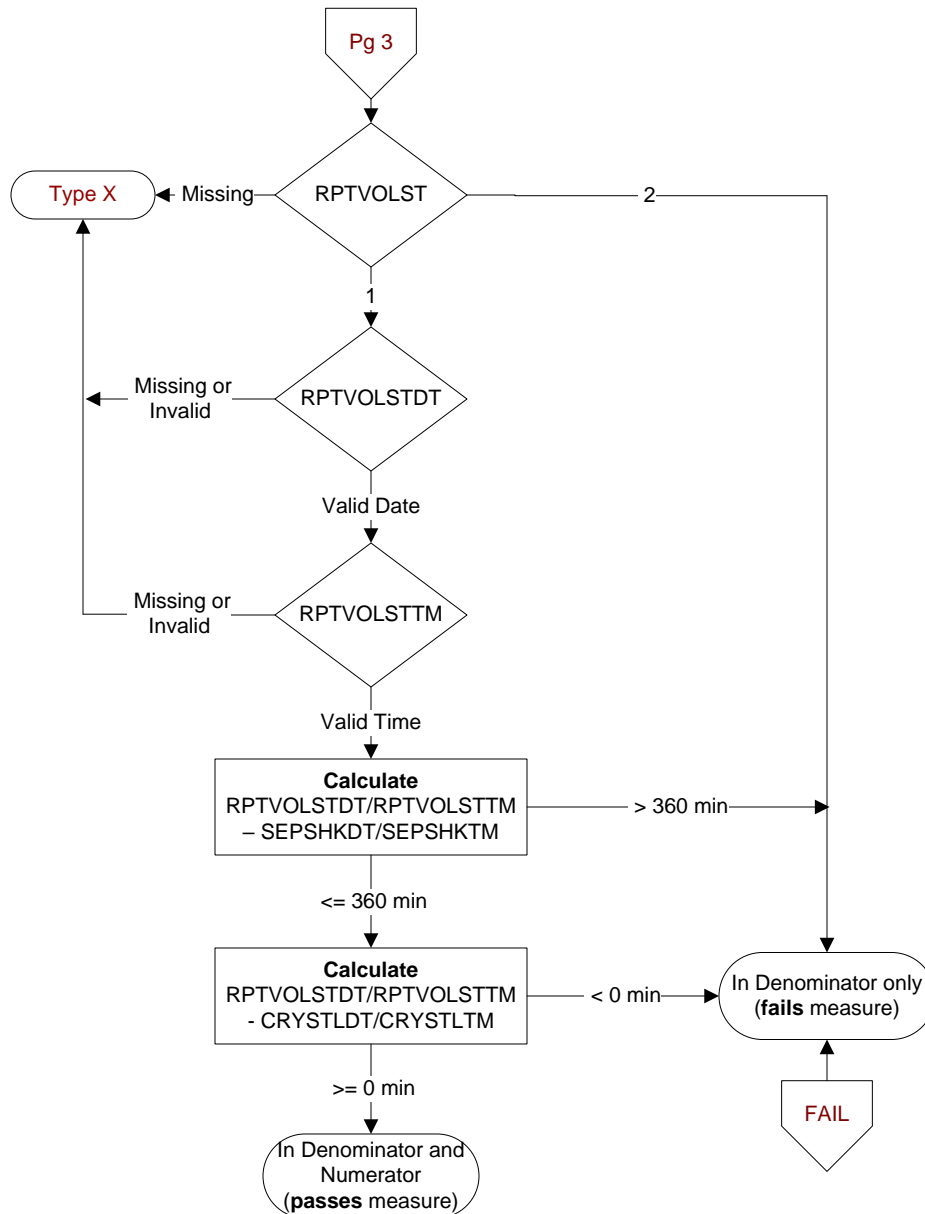
During the timeframe from (computer to display sepshkdt/sepshktm) to (computer to display sepshkdt/sepshktm + 6 hours) is there documentation an intravenous (IV) or intraosseous (IO) vasopressor was administered?

Generic Name	Brand Name
norepinephrine	Levophed
epinephrine	Adrenalin
phenylephrine	Neosynephrine
	Vasculap
dopamine	dopamine
vasopressin	Vasopressin
angiotensin II	Giapreza

1. Yes
2. No or Unable to Determine

VASOPRSDT / VASOPRSTM

During the timeframe from (computer to display sepshkdt/sepshktm) to (computer to display sepshkdt/sepshktm + 6 hours) enter the date and time on which an IV or IO vasopressor was administered.

**RPTVOLST**

During the timeframe from (computer to display crystldt/crystltm) to (computer to display sepshkdt/sepshktm + 6 hours) is there documentation of a repeat volume status and tissue perfusion assessment was performed **as evidenced by any of the following three criteria?**

- Physician/APN/PA documentation of a physical exam, perfusion assessment, sepsis focused exam, or systems review. (See D/D Rules for examples.)
- Physician/APN/PA documentation of a review of at least five of eight parameters. (See D/D Rules)
- Physician/APN/PA or non-physician/APN/PA documentation that one of four measurements was performed/results documented and reviewed. (See D/D Rules.)

1. Yes

2. No or unable to be determined

RPTVOLSTD / RPTVOLSTTM

During the timeframe from (computer to display crystldt/crystltm) to (computer to display sepshkdt/sepshktm + 6 hours) enter the earliest date and time that a repeat volume status and tissue perfusion assessment was documented as performed.