

**Document Links:**[CGPI Validation Module](#)[CGPI OP Med Recon Module](#)**COHORT**

16. AMI - Outpatient visit  
 48. Female, age 20-69  
 50. Random Sample  
 51. Random Sample MH  
 54. Frail/Elderly  
 60. DM Outpatient

**REVSTAT**

REVIEW STATUS (not abstracted)  
 0. Abstraction has not begun  
 1. Abstraction in progress  
 2. Abstraction completed w/o errors  
 3. TVG failure (exclusion)  
 4. Record contains missing data  
 5. Administrative exclusion

**OTHCARE** (CGPI Validation)

Is there evidence in the medical record that within the past two years, the patient refused VHA Primary Care and is receiving ONLY his/her primary care in a non-VHA setting?  
 1. yes  
 2. no

**FEFLAG** (rcvd on pull list)  
 FE case flagged for CGPI review / scoring?  
 0. No  
 1. Yes

**NEXUSPP** (OP MRec)

Was the NEXUS clinic encounter on (if valnexus =1 then display pnexusdt, if 2 display nexusdt2) with a physician/ APN/PA in a non-group setting?  
 1. Yes  
 2. No

**OPTMED1-8** (OP MedRec)

During the most recent NEXUS encounter on (if valnexus =1 display pnexusdt; if 2 display nexusdt2), is there evidence in the medical record of a medication list documented as reviewed in the encounter note that included all of the following components?

**Medication List Component****OPTMED1.** Active VA Prescriptions

1. Yes  
 2. No

**OPTMED2.** Remote Active VA Prescriptions

1. Yes  
 2. No

**OPTMED3.** Non-VA Medications

1. Yes  
 2. No

**OPTMED4.** Expired VA Prescriptions (see D/D rules)

1. Yes  
 2. No

**OPTMED5.** Discontinued VA Prescriptions (see D/D rules)

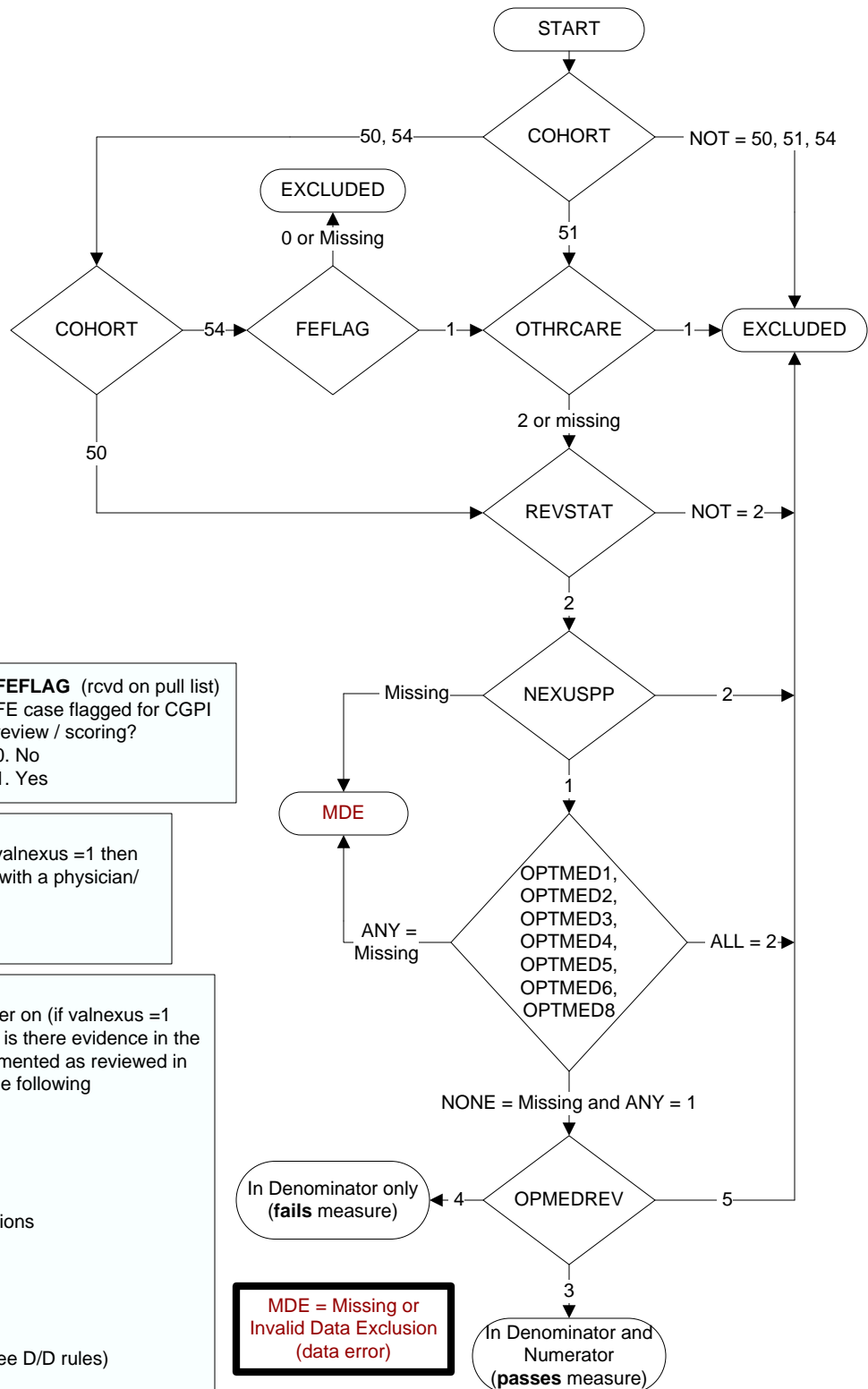
1. Yes  
 2. No

**OPTMED6.** Any Pending Medication Orders

1. Yes  
 2. No

**OPTMED8.** Allergies (both Remote Facility AND Local Facility)

1. Yes  
 2. No



**MDE = Missing or  
 Invalid Data Exclusion  
 (data error)**

**OPMEDREV** (OP MedRec)

During the most recent NEXUS encounter on (if valnexus = 1 display pnexusdt; if 2 display nexusdt2), is there documentation the available medication list components were reviewed with the patient/caregiver?  
 3. Yes  
 4. No: There is no documentation that the available essential medication list components were reviewed with the patient/caregiver  
 5. Documentation the patient/caregiver refused or was unable to participate in review of essential medication list components