

**Document Links:**[HBPC Instrument](#)**COHORT**

69 – Home Based Primary Care

**REVSTAT**

REVIEW STATUS (not abstracted)

0. Abstraction has not begun
1. Abstraction in progress
2. Abstraction completed w/o errors
3. TVG failure (exclusion)
4. Record contains missing data
5. Administrative exclusion from all measures

**HOSPICE**

During the past year, is there documentation in the medical record the patient is enrolled in a VHA or community-based hospice program?

1. Yes
2. No

**DEMENTDX2**

During the past year, does the record document a diagnosis of dementia/neurocognitive disorder as evidenced by one of the following ICD-10-CM diagnosis codes:

A81.00, A81.01, A81.09, A81.2, A81.82, A81.89, A81.9, F01.50, F01.511, F01.518, F01.52 – F01.54, F01.A0, F01.A11, F01.A18, F01.A2 – F01.A4, F01.B0, F01.B11, F01.B18, F01.B2 – F01.B4, F01.CO, F01.C11, F01.C18, F01.C2 – F01.C4, F02.80, F02.811, F02.818, F02.82 – F02.84, F02.A0, F02.A11, F02.A18, F02.A2 – F02.A4, F02.B0, F02.B11, F02.B18, F02.B2 – F02.B4, F02.C0, F02.C11, F02.C18, F02.C2 – F02.C4, F03.90, F03.911, F03.918, F03.92 – F03.94, F03.A0, F03.A11, F03.A18, F03.A2 – F03.A4, F03.B0, F03.B11, F03.B18, F03.B2 – F03.B4, F03.C0, F03.C11, F03.C18, F03.C2 – F03.C4, F10.27, F10.97, F13.27, F13.97, F18.17, F18.27, F18.97, F19.17, F19.27, F19.97, G23.1, G30.0, G30.1, G30.8, G30.9, G31.01, G31.09, G31.83, G90.3

1. Yes
2. No

**PERMCI**

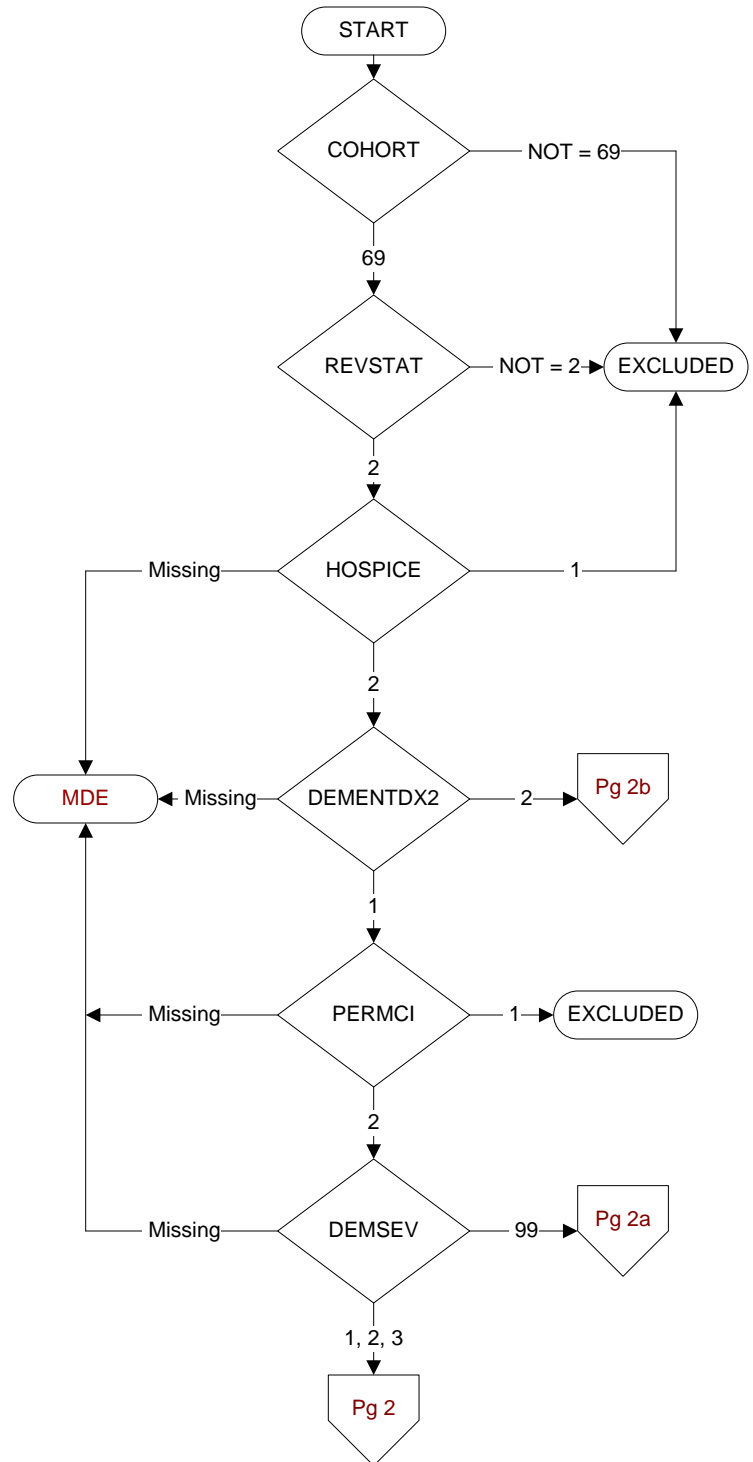
During the past year, did a physician/APN/PA or psychologist document that the patient has probable permanent cognitive impairment using a Clinical Reminder?

1. Yes
2. No

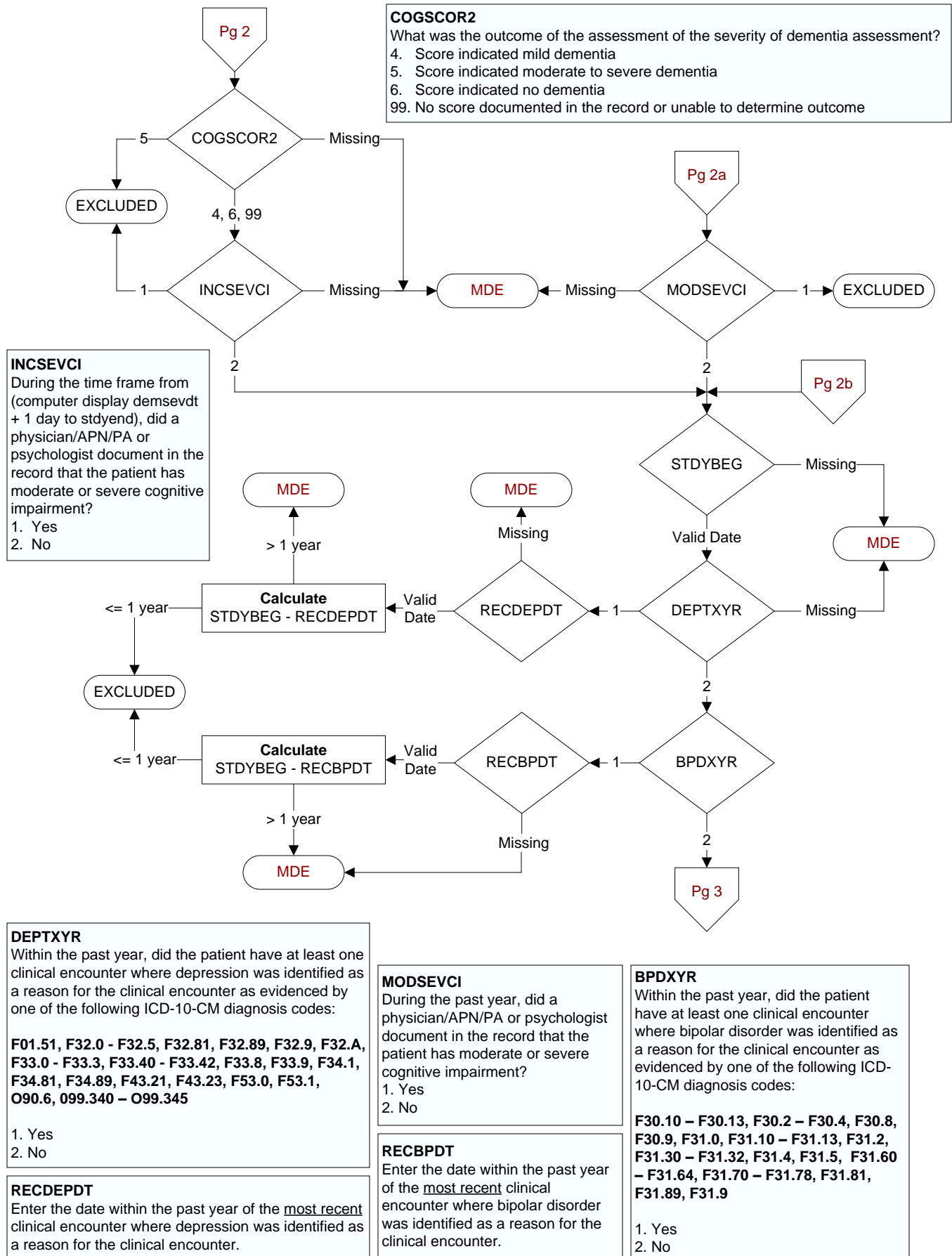
**DEMSEV**

Was the severity of dementia assessed during the past year using one of the following standardized tools?

1. Clinical Dementia Rating Scale (CDR)
2. Functional Assessment Staging Tool (FAST)
3. Global Deterioration Scale (GDS)
99. Severity of dementia was not assessed during the past year using one of the specified tools



**MDE = Missing or  
Invalid Data Exclusion  
(data error)**



**SCRPHQ2**  
During the past year was the patient screened for depression by the PHQ-2?  
1. Yes  
2. No  
98. Patient refused depression screening by the PHQ-2

**PHQ2DT**  
Enter the date of the most recent screening for depression by the PHQ-2.

**PHQ1SCOR**  
Enter the score for PHQ-2 Question 1 documented in the record:  
**Over the past 2 weeks, have you been bothered by little interest or pleasure in doing things?**  
0. Not at all → 0  
1. Several days → 1  
2. More than half the days → 2  
3. Nearly every day → 3  
99. No answer documented

**PHQ2SCOR**  
Enter the score for PHQ-2 Question 2 documented in the record:  
**Over the past 2 weeks, have you been bothered by feeling down, depressed, or hopeless?**  
0. Not at all → 0  
1. Several days → 1  
2. More than half the days → 2  
3. Nearly every day → 3  
99. No answer documented

**PHQTOTAL**  
Enter the total score for the PHQ-2 questions documented in the medical record.

