

Document Links:[Sepsis Instrument](#)**REVSTAT**

REVIEW STATUS (not abstracted)

- 0. Abstraction has not begun
- 1. Abstraction in progress
- 2. Abstraction completed w/o errors
- 3. TVG failure (exclusion)
- 4. Record contains missing data or errors
- 5. Administrative exclusion from all measures

AGE

Calculated field – ADMDT - BIRTHDT

DCDT

Discharge date

ADMDT

Admission date

TRNSFR

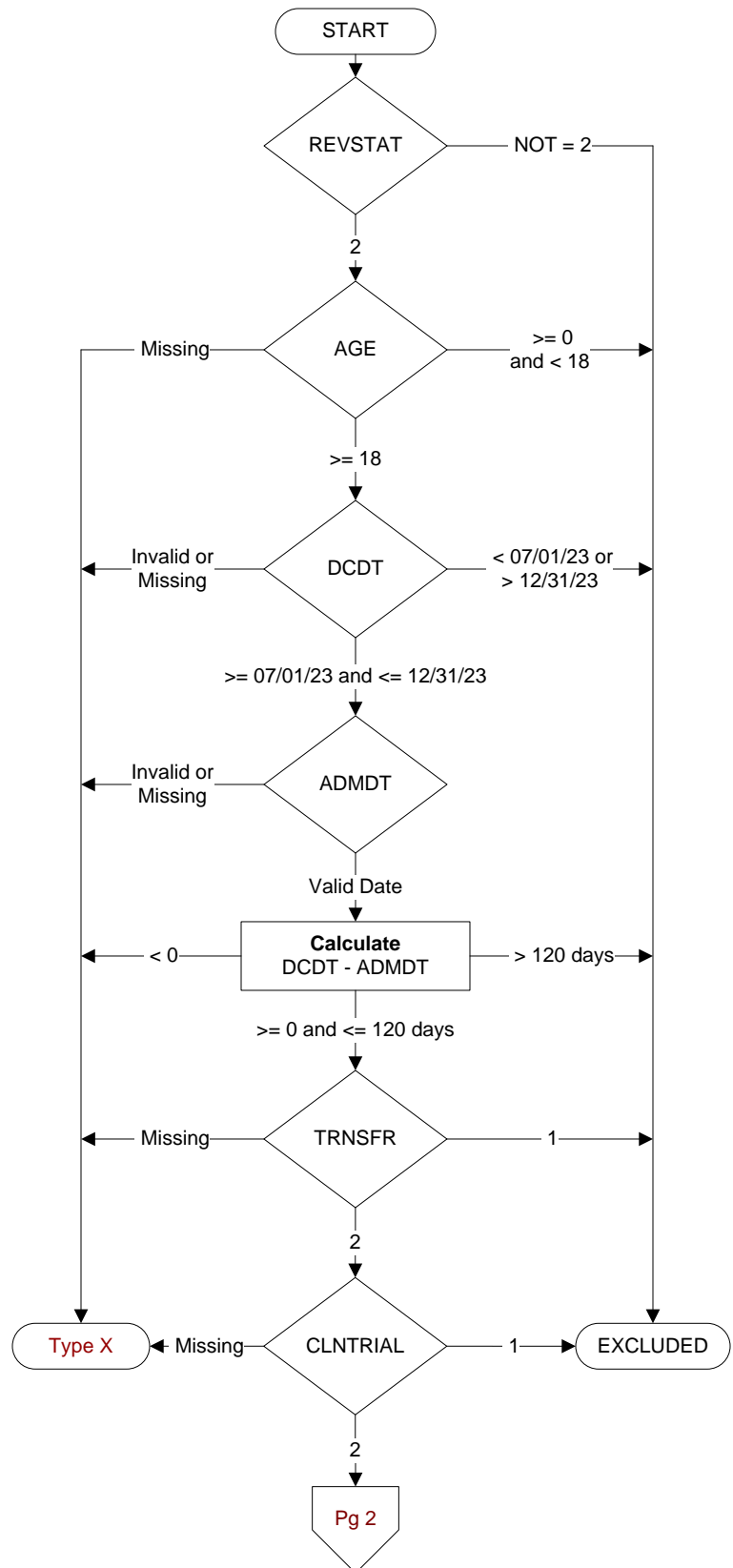
Is there documentation the patient was received as a transfer from an inpatient, outpatient or emergency/observation department of an outside hospital or from an ambulatory surgery center?

- 1. Yes
- 2. No

CLNTRIAL

During this hospital stay, was the patient enrolled in a clinical trial in which patients with sepsis/septic shock were being studied?

- 1. Yes
- 2. No

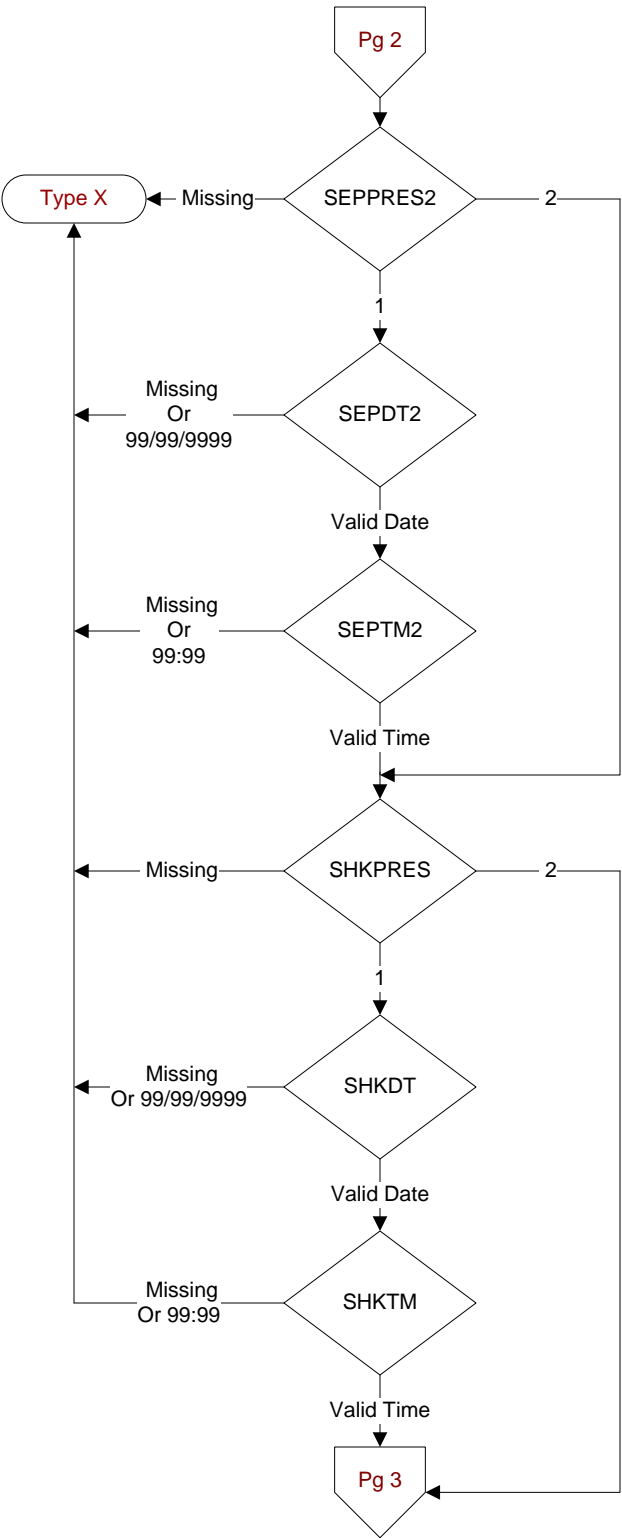


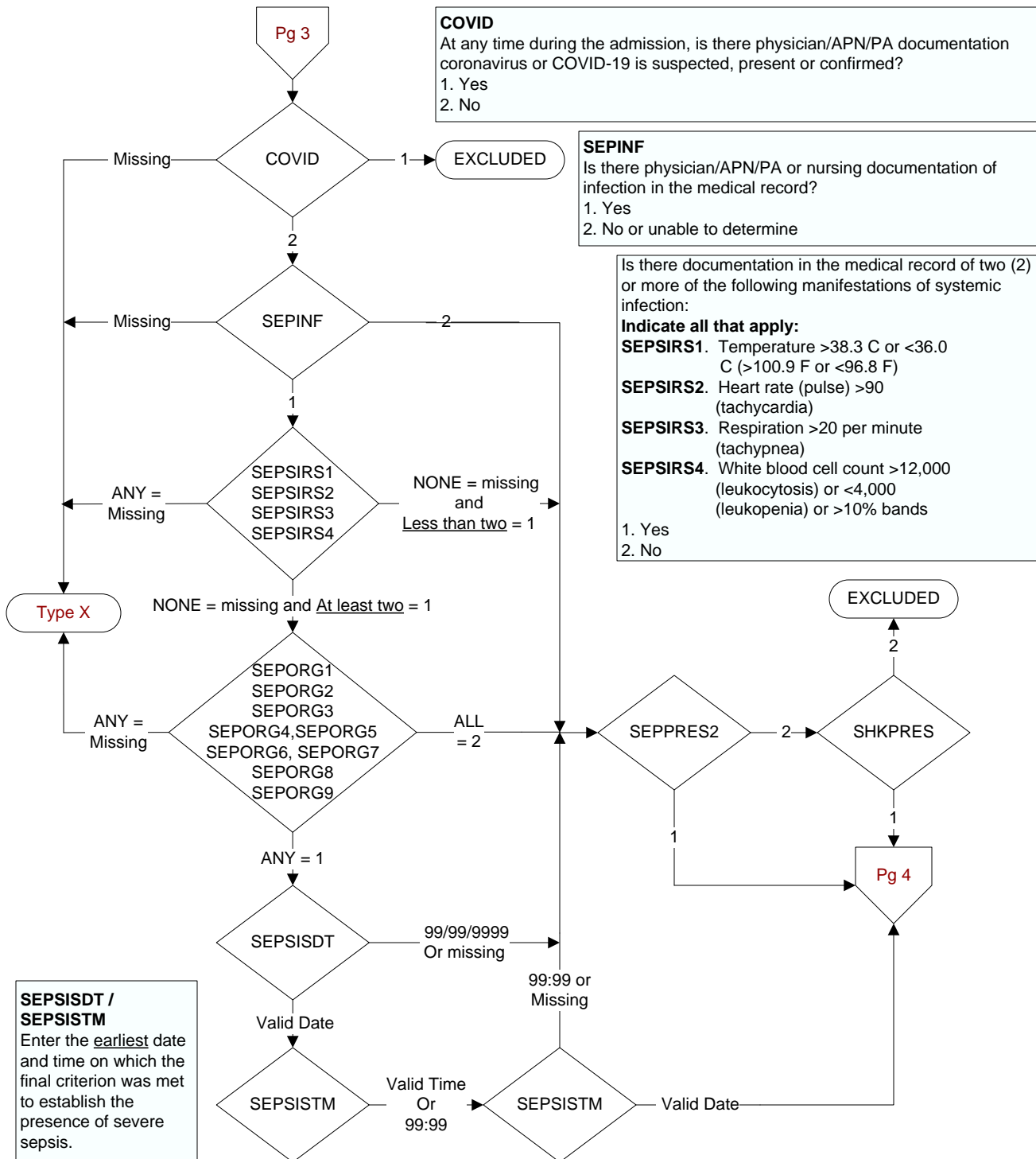
SEPPRES2
Did a physician/APN/PA document presence of severe sepsis?
1. Yes
2. No

SEPDT2 / SEPTM2
Enter the earliest date and time a physician/APN/PA documented the presence of severe sepsis

SHKPRES
Is documentation of septic shock present in the record?
1. Yes
2. No, or unable to determine

SHKDT / SHKTM
Enter the earliest date and time a physician/APN/PA of the documented the presence of septic shock.





Is there documentation of organ dysfunction in the medical record?

Indicate all that apply:

SEPORG1. Systolic blood pressure (SBP) < 90 mmHg or mean arterial pressure (MAP) < 65 mmHg

SEPORG2. Systolic blood pressure (SBP) decrease of more than 40 mmHg (see definitions/decision (D/D) rules)

SEPORG3. Acute respiratory failure as evidenced by a new need for invasive or non-invasive mechanical ventilation (see D/D rules)

SEPORG4. Creatinine > 2.0 (see D/D rules)

SEPORG5. Urine output < 0.5mL/kg/hour for 2 consecutive hours (see D/D rules)

SEPORG6. Total bilirubin > 2 mg/dL (34.2 mmol/L)

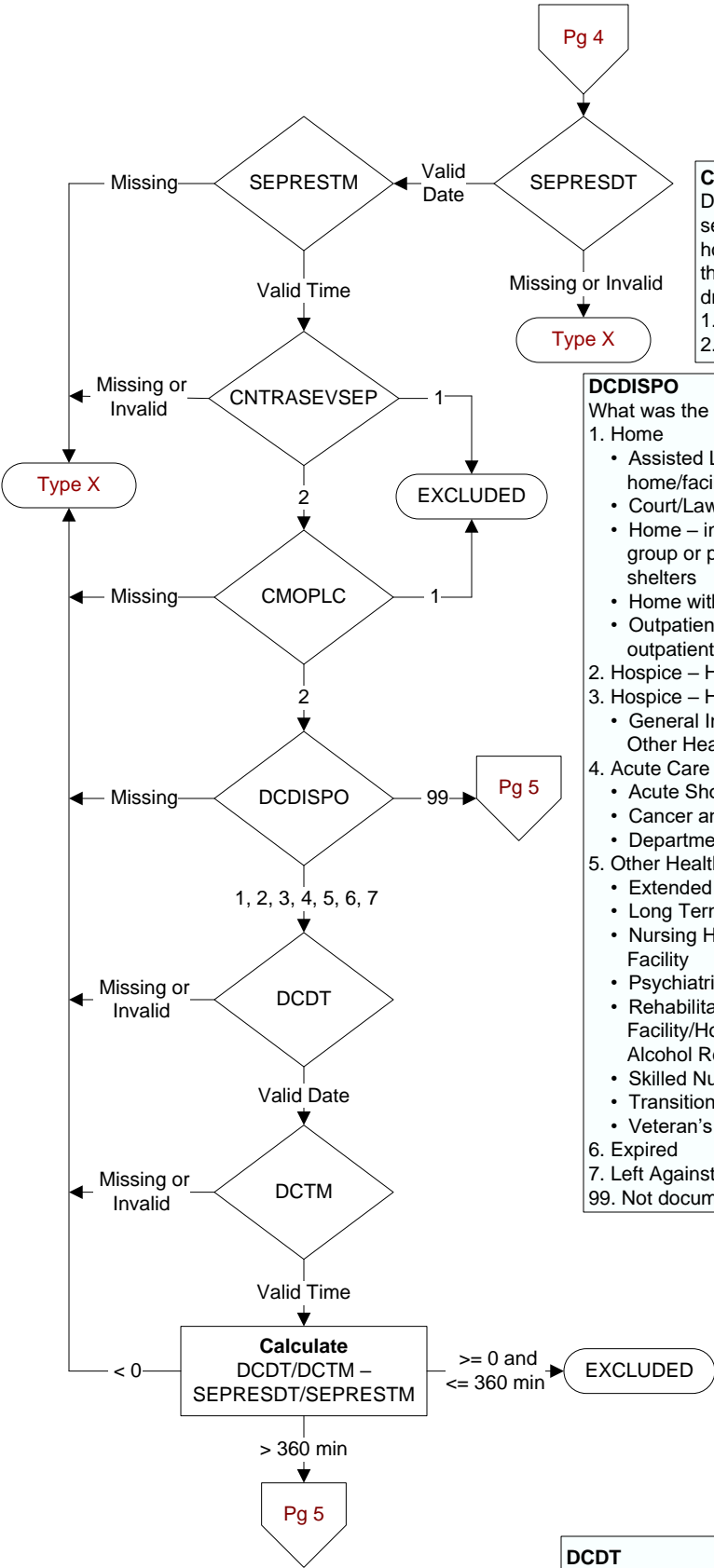
SEPORG7. Platelet count < 100,000

SEPORG8. INR > 1.5 or aPTT > 60 seconds (see D/D rules)

SEPORG9. Lactate > 18.0 mg/dL (>2 mmol/L)

1. Yes

2. No



SEPRESDT
Computer to auto-fill earliest valid date entered in sepd2, shkdt, or sepsidt.

SEPRESTM
Computer to auto-fill earliest valid time entered in septm2, shktm, or sepsistm.

CNTRASEVSEP
During the timeframe from (computer to display sepresdt/ seprestm - 6 hours) to (computer to display sepresdt/seprestm + 6 hours) is there physician/APN/PA or nursing documentation that the patient or authorized patient advocate refused either a blood draw, IV fluid administration, or IV antibiotic administration?
1. Yes
2. No or unable to determine

DCDISPO
What was the patient's discharge disposition on the day of discharge?
1. Home
• Assisted Living Facilities (ALFs) – includes assisted living care at nursing home/facility
• Court/Law Enforcement – includes detention facilities, jails, and prison
• Home – includes board and care, domiciliary, foster or residential care, group or personal care homes, retirement communities, and homeless shelters
• Home with Home Health Services
• Outpatient Services including outpatient procedures at another hospital, outpatient Chemical Dependency Programs and Partial Hospitalization
2. Hospice – Home (or other home setting as listed in #1 (above)
3. Hospice – Health Care Facility
• General Inpatient and Respite, Residential and Skilled Facilities, and Other Health Care Facilities
4. Acute Care Facility
• Acute Short Term General and Critical Access Hospitals
• Cancer and Children's Hospitals
• Department of Defense and Veteran's Administration Hospitals
5. Other Health Care Facility
• Extended or Immediate Care Facility (ECF/ICF)
• Long Term Acute Care Hospital (LTACH)
• Nursing Home or Facility including Veteran's Administration Nursing Facility
• Psychiatric Hospital or Psychiatric Unit of a Hospital
• Rehabilitation Facility including, but not limited to: Inpatient Rehabilitation Facility/Hospital, Rehabilitation Unit of a Hospital, Chemical Dependency/ Alcohol Rehabilitation Facility
• Skilled Nursing Facility (SNF), Sub-Acute Care or Swing Bed
• Transitional Care Unit (TCU)
• Veteran's Home
6. Expired
7. Left Against Medical Advice/AMA
99. Not documented or unable to determine

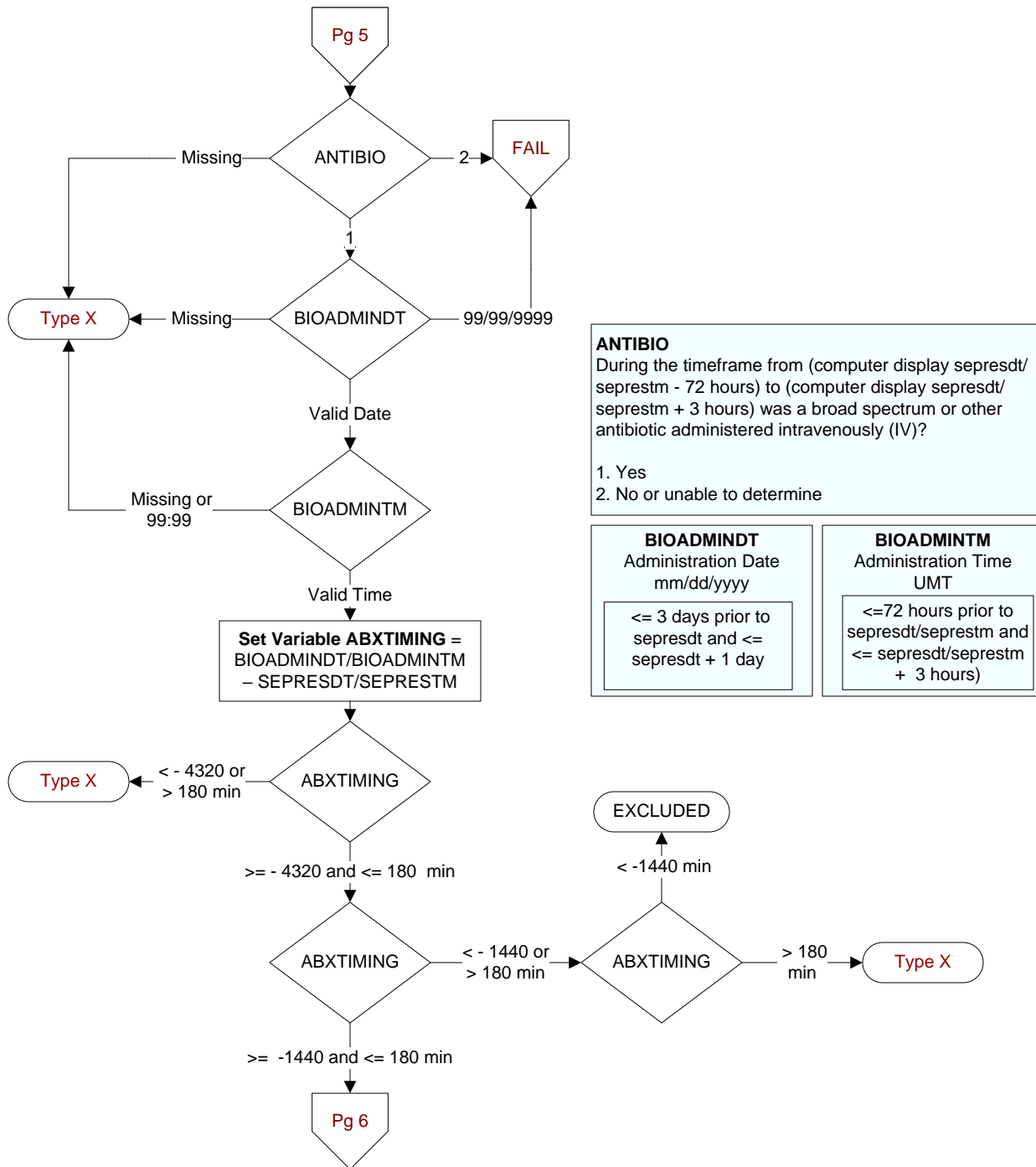
CMOPLC
During the timeframe from (computer to display sepresdt/ seprestm - 6 hours) to (computer to display sepresdt/ seprestm + 6 hours) is there physician/APN/PA documentation of comfort measures only or palliative care (see Inclusion terms below)?

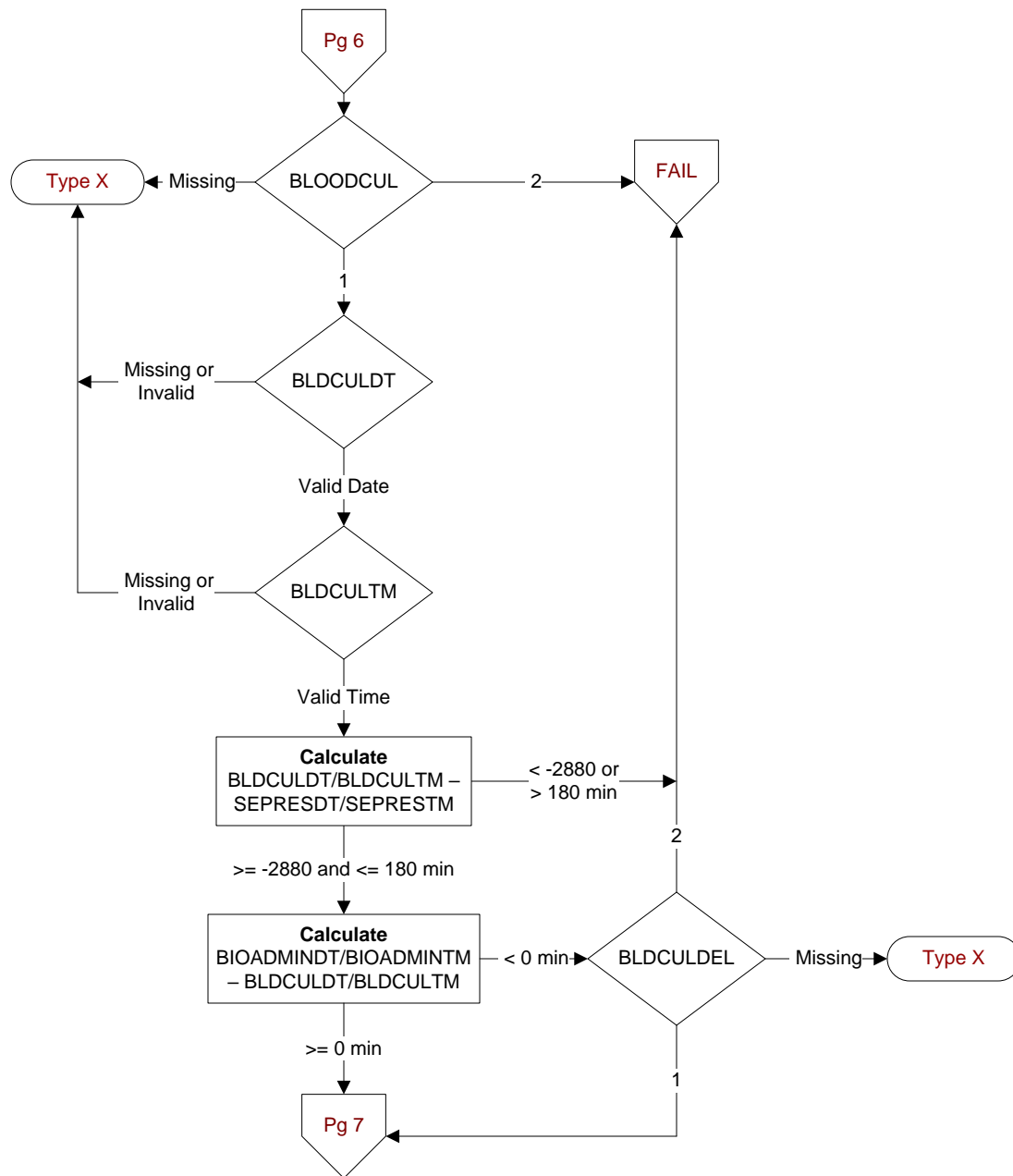
Inclusion (Only acceptable terms)	
Brain death/dead	Hospice Care
Comfort care	Organ harvest
Comfort measures	Palliative Care
Comfort measures only (CMO)	Palliative Consult
Comfort only	Terminal care
Do Not Resuscitate Comfort Care (DNR-CC)	Terminal extubation
End of life care	Withdraw care
Hospice	Withhold care

1. Yes
2. No

DCDT
Discharge date:

DCTM
Discharge time:



**BLOODCUL**

During the time frame from [(If bioadmintd/ bioadmintm - sepresdt/seprestm >= -1440 and < 0, computer to display sepresdt/ seprestm - 48 hours to sepresdt/seprestm + 3 hours); else computer to display (earliest bioadmintd/ bioadmintm- 24 hours to sepresdt/ seprestm + 3 hours)], was a blood culture collected?

1. Yes
2. No or unable to determine

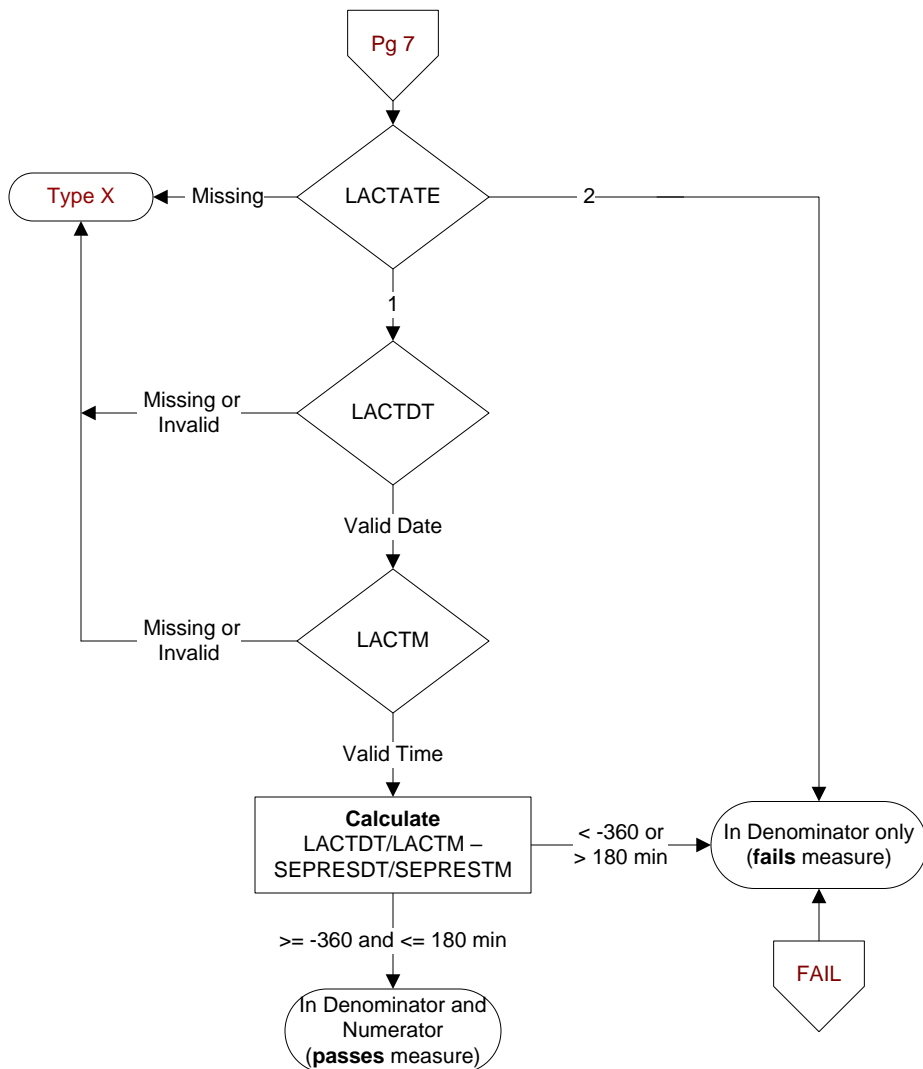
BLD CULDT / BLD CULTM

During the specified timeframe, enter the date and time the blood culture was collected.

BLD CULDEL

Is there documentation supporting an acceptable delay in collecting a blood culture?

1. Yes
2. No or unable to determine

**LACTATE**

During the timeframe from (computer display sepresdt/seprestm - 6 hours to sepresdt/seprestm + 3 hours) was an initial lactate level drawn (or collected)?

1. Yes
2. No

LACTDT / LACTM

Enter the date and time the initial lactate level was drawn (or collected).