

Document Links:[CGPI Validation Module](#)[CGPI PI Module](#)**COHORT**

16. AMI - Outpatient visit
 48. Female, age 20-69
 50. Random Sample
 51. Random Sample MH
 54. Frail/Elderly
 60. DM Outpatient

FEFLAG (rcvd on pull list)
 FE case flagged for CGPI
 review / scoring?
 0. No
 1. Yes

OTHCARE (Validation)

Is there evidence in the medical record that within
 the past two years, the patient refused VHA Primary
 Care and is receiving ONLY his/her primary care in
 a non-VHA setting?
 1. yes
 2. no

REVSTAT

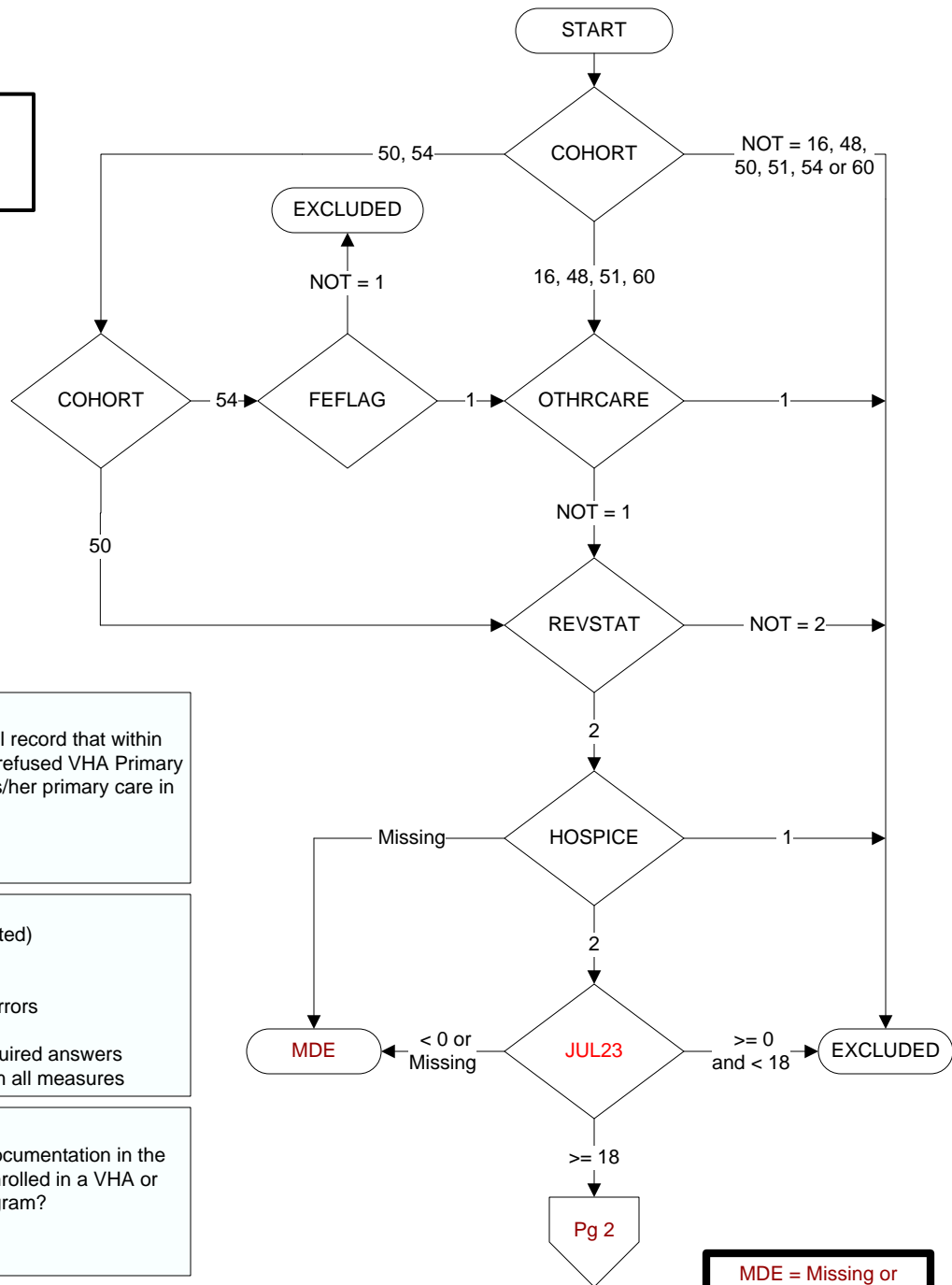
REVIEW STATUS (not abstracted)
 0. Abstraction has not begun
 1. Abstraction in progress
 2. Abstraction completed w/o errors
 3. TVG failure (exclusion)
 4. Record contains missing required answers
 5. Administrative exclusion from all measures

HOSPICE (PI module)

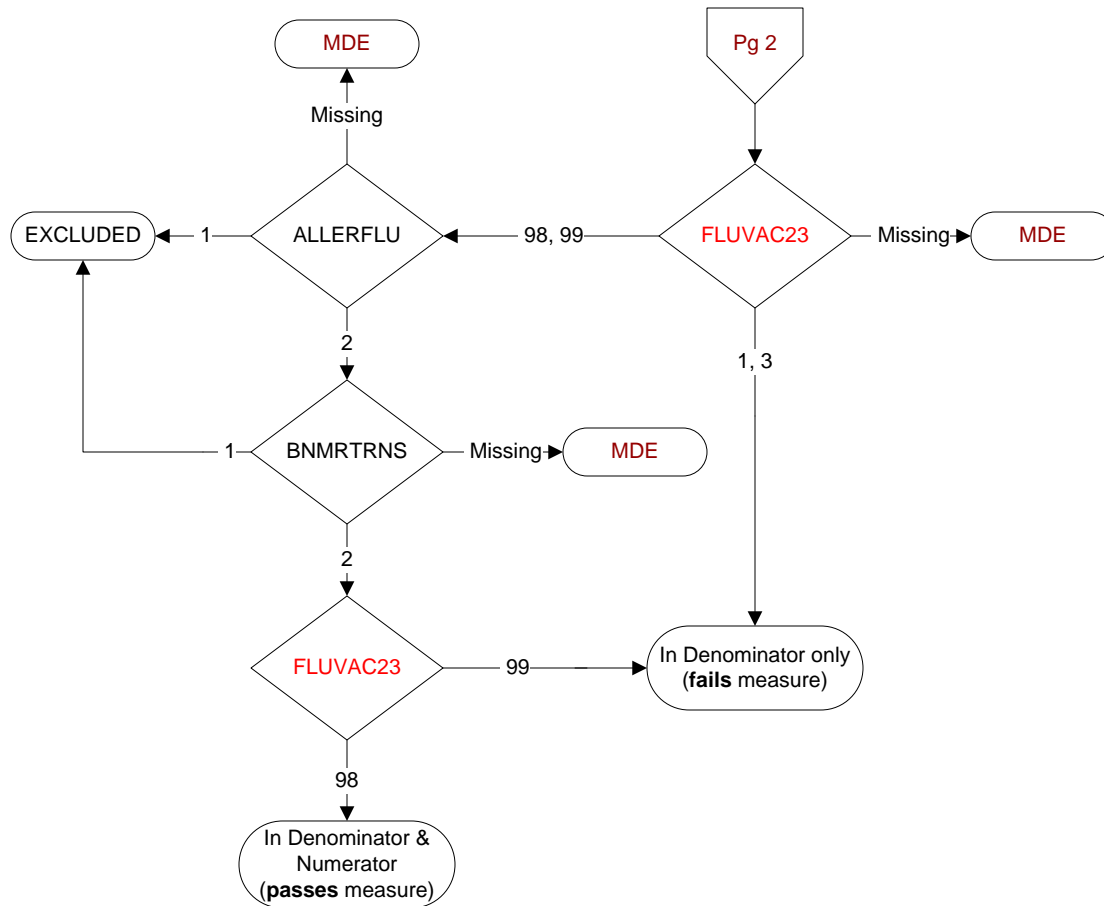
During the past year is there documentation in the
 medical record the patient is enrolled in a VHA or
 community-based hospice program?
 1. Yes
 2. No

JUL23

Calculated field
 (07/01/23 - BIRTHDT).



**MDE = Missing or
 Invalid Data Exclusion
 (data error)**

**FLUVAC23** (PI Module)

During the period from (computer display 7/01/2023 to (pulldt or <= stdyend if stdyend > pulldt)), did the patient receive influenza vaccination?

- 1. received vaccination from VHA
- 3. received vaccination from private sector provider
- 98. patient refused vaccination
- 99. no documentation patient received vaccination

ALLERFLU (PI Module)

Is one of the following documented in the medical record?

- Previous severe allergic reaction to any component of the influenza vaccine, or after a previous dose of any influenza vaccine
- History of Guillain-Barre Syndrome

- 1. Yes
- 2. No

BNMRTNS

Is there documentation in the medical record the patient had a bone marrow transplant during the past year?

- 1. Yes
- 2. No