

Document Links:[CGPI Validation Module](#)[CGPI CVD Module](#)**COHORT**

16. AMI - Outpatient visit
 48. Female, age 20-69
 50. Random Sample
 51. Random Sample MH
 54. Frail/Elderly
 60. DM Outpatient

FEFLAG (rcvd on pull list)
 FE case flagged for CGPI
 review / scoring?

0. No
 1. Yes

OTHCARE (Validation)

Is there evidence in the medical record that
 within the past two years, the patient refused
 VHA Primary Care and is receiving ONLY his/
 her primary care in a non-VHA setting?

1. yes
 2. no

REVSTAT

REVIEW STATUS (not abstracted)
 0. Abstraction has not begun
 1. Abstraction in progress
 2. Abstraction completed w/o errors
 3. TVG failure (exclusion)
 4. Record contains missing data
 5. Administrative exclusion f

HOSPICE (Validation)

During the past year is there documentation in
 the medical record the patient is enrolled in a
 VHA or community-based hospice program?

1. Yes
 2. No

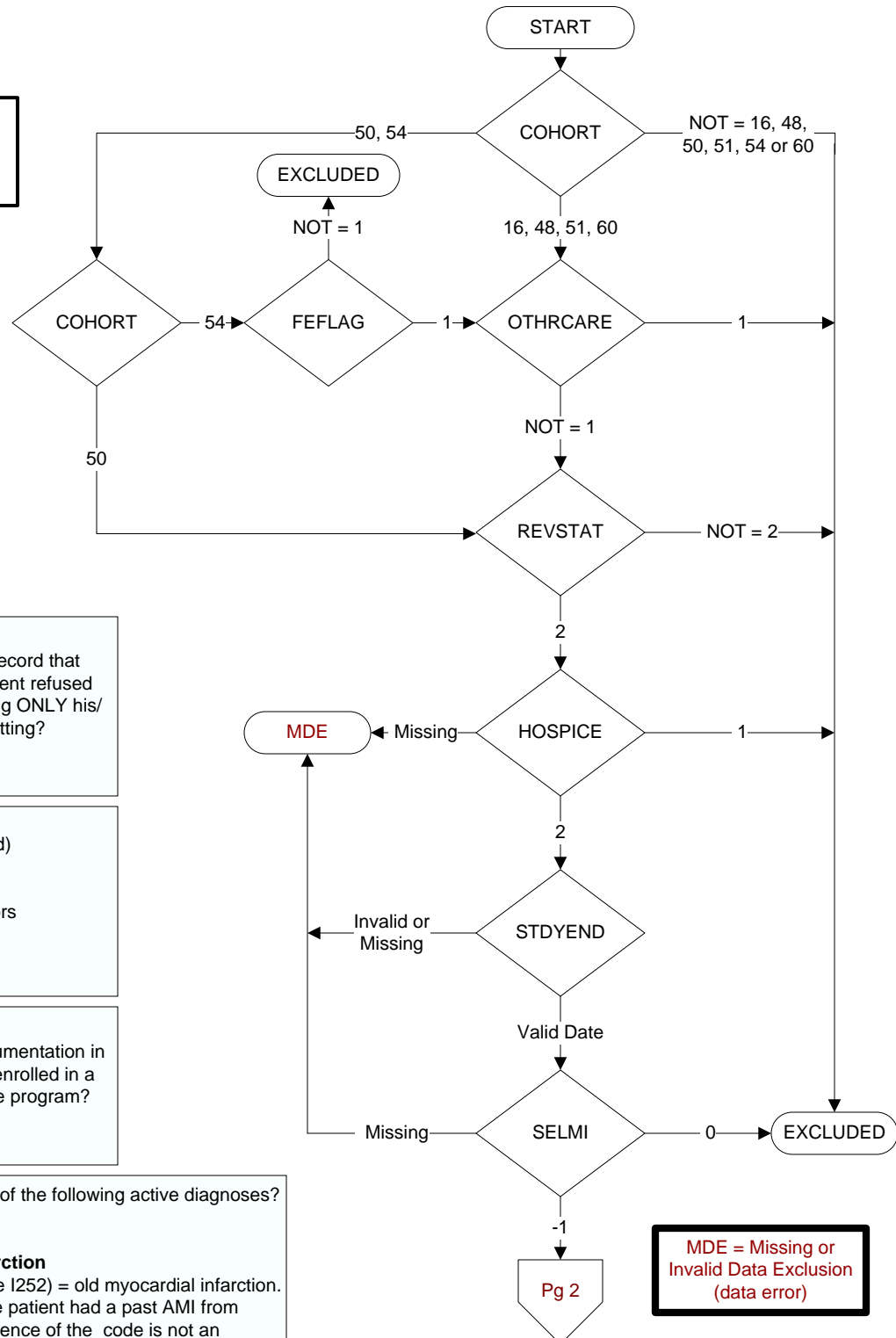
Did the patient have one or more of the following active diagnoses?
 (Validation)

SELM1 4 = Old Myocardial Infarction

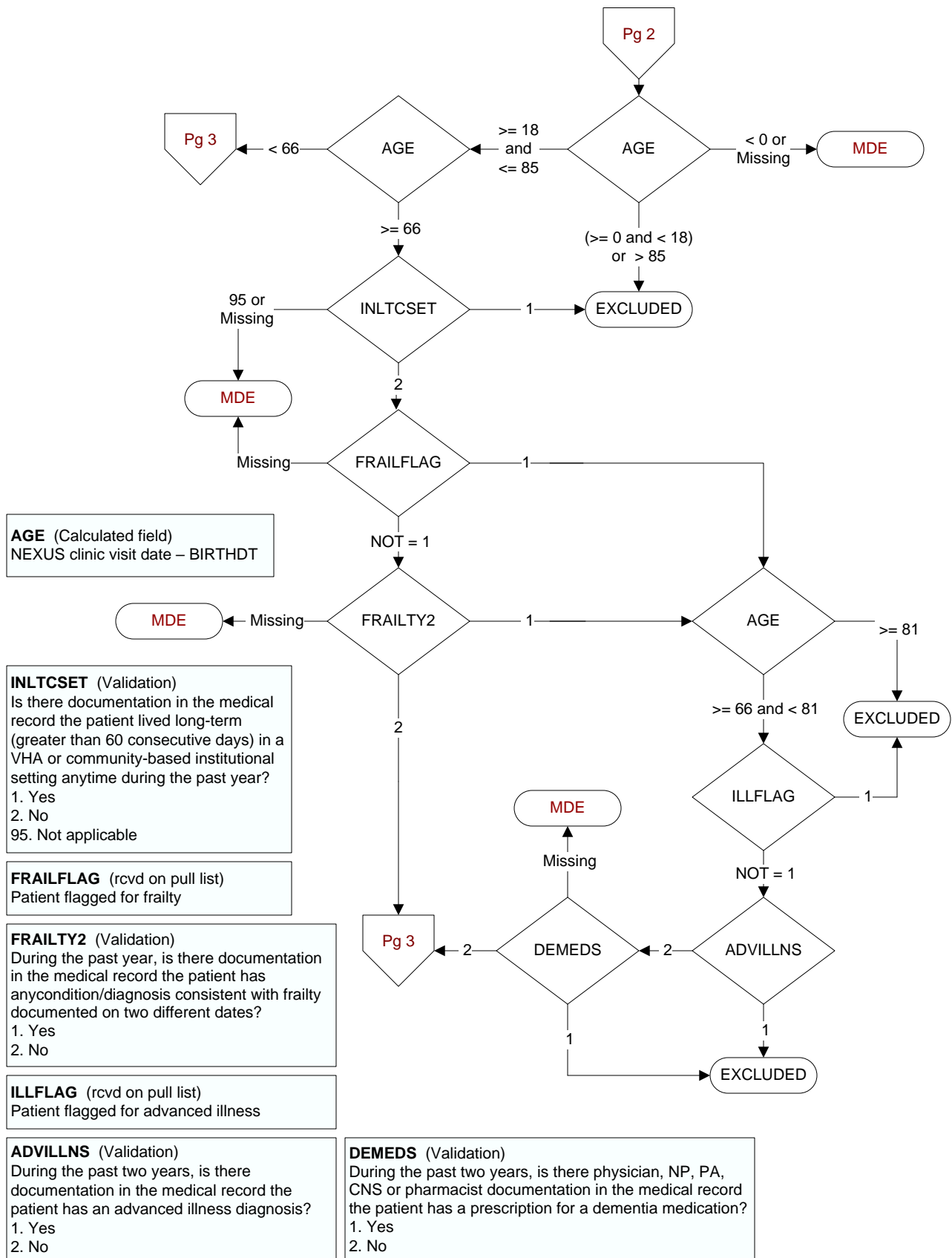
ICD-9-CM code 412 (ICD-10 code I252) = old myocardial infarction.
 The abstractor may determine the patient had a past AMI from
 clinician documentation, and presence of the code is not an
 absolute requirement

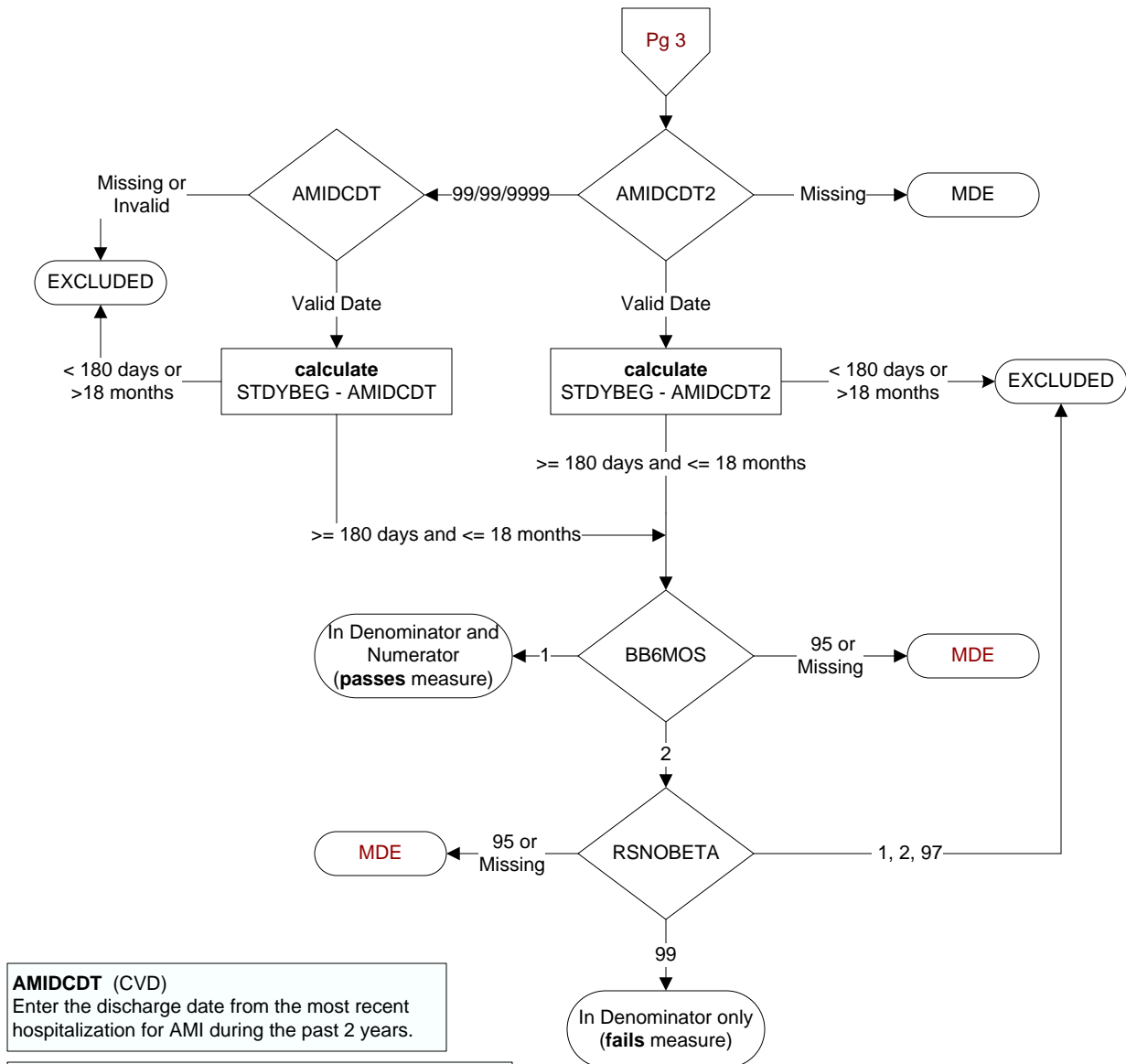
-1 Yes
 0 No

STDYEND (rcvd on pull list).
 Last day of study interval



**MDE = Missing or
 Invalid Data Exclusion
 (data error)**





AMIDCDT (CVD)
Enter the discharge date from the most recent hospitalization for AMI during the past 2 years.

AMIDCDT2 (CVD)
Enter the date of the discharge associated with the first episode of AMI during the timeframe from (computer to display stdybeg -18 months to amidcdt – 1 day).

BB6MOS (CVD)
Is there documentation in the medical record the patient was on a beta-blocker continuously during the timeframe from (computer to display the earliest of amidcdt or amidcdt2 + 179 days)?
Examples of beta-blockers include, but are not limited to:

- metoprolol succinate or tartrate
- carvedilol
- atenolol
- nadolol
- propranolol
- combination of beta-blockers with other drugs

1. Yes
2. No
95. Not applicable

RSNOBETA (CVD)
On (computer to display most recent of amidcdt or frstdcdt), does the record document any of the following reasons for not prescribing a beta-blocker?

1. Beta-blocker allergy
2. Bradycardia (heart rate less than 60 bpm)
95. Not applicable
97. Other reasons documented by a physician/APN/PA or pharmacist for not prescribing a beta-blocker
99. No documented reason